

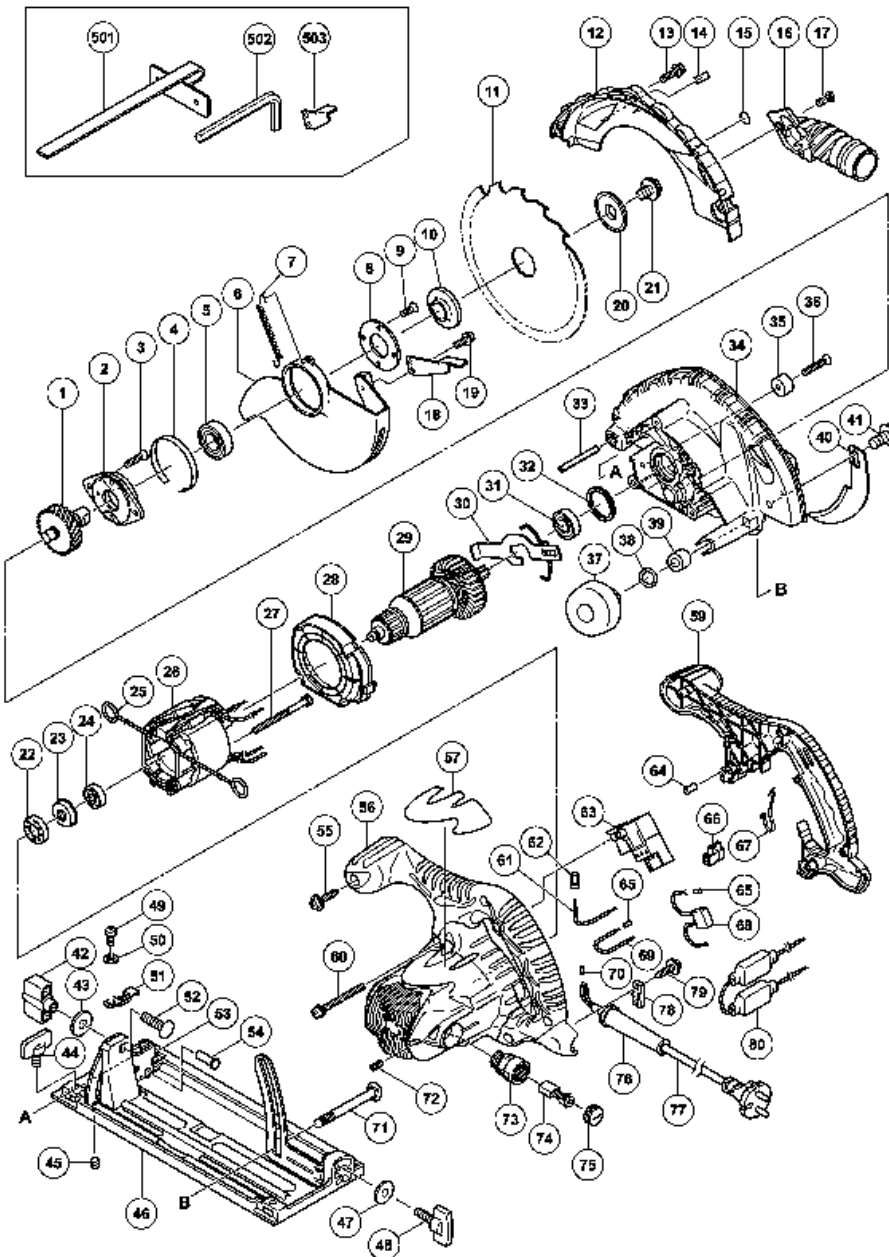
Hitachi Power Tools

LIST NO. E507

ELECTRIC TOOL PARTS LIST

■ CIRCULAR SAW
Model C 6BU2

2005 · 8 · 30
(E1)



C6BU2

Pos. Nr.	Art. Nr.	Beschreibung	Stueck	Kommentar	Beschreibung
1	302-449	ZAHNRAD M WELLE C6U/C6BU/FC6SB	1		SPINDLE AND GEAR SET
2	302-433	LAGERHALTER C6U/BU/C7U/BU/FC6SB/ C6DD	1		BEARING HOLDER
3	992-013	#NAME?	2		SEAL LOCK FLAT HD. SCREW M5X14
4	961-807	DISTANZBLECH C6U- C8U/C6BU/C7BU/ FC6SB/C6	1		BUSHING
5	600-3VV	KUGELLAGER 6003 VV	1		BALL BEARING 6003VVCMP52L
6	324-677	Sicherheitsabdeckung C6U2	1		SAFETY COVER
7	302-463	RUCKHOLFEDER C6U/C6BU/FC6SB/C6DD	1		RETURN SPRING
8	302-435	LAGERDECKEL DIV TYPEN	1		BEARING COVER
9	990-430	#NAME?	2		SEAL LOCK FLAT HD. SCREW M4X10
10	302-476	SPANNSCHEIBE (A) C6U-C9U/ C6BU/C7BU/FC6S	1		WASHER (A)
11	324-678		1		TCT SAW BLADE 165MM- D30 HOLE- NT16
12	324-674		1		SAW COVER
13	305-691	Schraube M4x14	4		MACHINE SCREW (W/WASHERS) M4X14 (BLACK)
14			1		MODEL MANE PLATE
15			1		NAME PLATE (BRAKE)
16	324-669		1		DUST COLLECTOR
17	324-139	Spezialbolzen SV13YA	1		SPECIAL BOLT
18	302-464	KNAUF C6U- C9U/C6BU/C7BU/C6DD/ FC6SB	1		KNOB
					MACHINE SCREW

19	304-043	#NAME?	1		(W/WASHERS) M4X10 (BLACK)
20	302-423	SPANNSCHEIBE (B) C6U/BU/C7U/BU/ FC6SB/C6	1		WASHER (B)
21	324-662	Inbusschraube M8x15 5 C9BU2	1		HEX. SOCKET HD. BOLT M8X15.5
22	325-060		1		RUBBER BUSHING
23	322-089		1		BEARING BUSHING
24	608-VVM	KUGELLAGER 608 VVM	1		BALL BEARING 608VVC2PS2L
25	930-703	KOHLLENHALTERKLEMME DH28Y u a H30PV/VB16	2		BRUSH TERMINAL
26	340-424G		1	INCLUD.25	STATOR ASS'Y 230V
27	953-121	SECHSKANTSCHNEIDSCHRAUBE D5X50	2		HEX. HD. TAPPING SCREW D5X50
28	324-675		1		FAN GUIDE
29	360-728E	Anker 230V C6BU2	1		ARMATURE 230V
30	324-655		1		LOCK LEVER
31	600-1VV	KUGELLAGER 6001 VV	1		BALL BEARING 6001VVCMP2L
32	958-130	GUMMIRING C6U/C6BU/C7U/C7BU/ FC6SB/C6DD	1		RUBBER RING
33	949-686	ROLLSTIFT D6X40 (10ST)	1		ROLL PIN D6X40 (10 PCS.)
34	324-673		1	"INCLUD.32,35,36"	GEAR COVER ASS'Y
35	961-729	PUFFER C6U- C9U/C6BU/C7BU/FC6SB/ C6DD	1		CUSHION
36	949-794	+SENKKOPFSCHRAUBE M6X20 (10ST)	1		FLAT HD. SCREW M6X20 (10 PCS.)
37	324-660	Knopf C7U2	1		KNOB
38	676-531	O-RING (P-7) C6U- C9U/C6BU/C7BU/ C6DD/FC6	1		O-RING (P-7)
39	303-	DISTANZHULSE	1		SLEEVE

	801	C6BU/C7BU/C8U/C9U			
40	303-838	SPALTKEIL C6U/C6DD/FC6SB	1		RIVING KNIFE
41	324-664	Inbusschraube M8x10 C9BU2	1		HEX. SOCKET HD. BOLT M8X10
42	324-658	Flugelmutter C7U2	1		WING NUT M8
43	949-433	UNTERLEGSSCHEIBE M8 (10ST)	1		BOLT WASHER M8 (10 PCS.)
44	301-806	FLUGELSCHRAUBE M6X15	1		WING BOLT M6X15
45	302-469	#NAME?	1		SLOTTED HD. SET SCREW (SEAL LOCK) M6X6
46	324-679		1	"INCLUD.42,43,47-54"	BASE ASS'Y (FLUORINE)
47	949-425	UNTERLEGSSCHEIBE M6 (10ST)	1		WASHER M6 (10 PCS.)
48	302-459	FLUGELSCHRAUBE M6X17	1		WING BOLT M6X17
49	949-214	+KOPFSCHRAUBE M4X6 (10ST)	1		MACHINE SCREW M4X6 (10 PCS.)
50	949-453	FEDERSCHNEIBE M4 (10ST)	1		SPRING WASHER M4 (10 PCS.)
51	324-659	Fuhrungsstuck C7U2	1		GUIDE PIECE
52	302-457	SCHLOSSSCHRAUBE M8X30 C6U-C9U u a	1		BOLT (SQUARE) M8X30
53	308-479	SKALENPLATTE C6BU/C7BU/C6DD/ FC6SB	1		BEVEL PLATE
54	308-480	NIETE D6X17 C6U-C8U/C6BU/C7BU/ C6DD/FC6S	2		RIVET D6X17
55	301-653	SCHNEIDSCHRAUBE D4X20 MIT FLANSCH (SCHWA	5		TAPPING SCREW (W/FLANGE) D4X20 (BLACK)
56	324-682		1	"INCLUD.72,73"	HOUSING ASS'Y
57			1		NAME PLATE
59	324-683		1		HANDLE COVER
					MACHINE

60	302-434	#NAME?	3		SCREW (W/WASHERS) M5X45 (BLACK)
61	324-680		1		INTERNAL WIRE (BLUE) 70L
62	959-141	VERBINDER 50092 (10ST) DIV TYPEN	1		CONNECTOR 50092 (10 PCS.)
63	316-445	SCHALTER C6UB/7UB	1		SWITCH (B) (2P PILLER TYPE) W/SAFETY LOCK
64	946-362	LAGERVERRIEGELUNG (DIV TYPEN)	1		BEARING LOCK
65	981-373	ADERENDHULSE (D) DIV TYPEN	2		TUBE (D)
66	938-307	SCHRAUBKLEMME 1-REIHIG DIV TYPEN	1		PILLAR TERMINAL
67	313-505	KABELKLEMME CL10SA	1		WIRE BAND
68	930-039	KONDENSATOR C6U-C13U u a	1		NOISE SUPPRESSOR
69	324-681		1		INTERNAL WIRE (BLUE) 100L
70	981-373	ADERENDHULSE (D) DIV TYPEN	1	FOR CORD	TUBE (D)
71	316-444	DIAGONAL-SCHRAUBE M8X105 C6BU/7BU	1		DIAGONAL BOLT M8X105
72	938-477	INBUSSTIFTSCHRAUBE M5X8	2		HEX. SOCKET SET SCREW M5X8
73	960-685	KOHLLENHALTER C6BU/C7BU	2		BRUSH HOLDER
74	999-056	KOHLLEBURSTEN (1PAAR) C6BU/C7BU	2		CARBON BRUSH (1 PAIR)
75	945-161	KOHLLENKAPPE C6U/C7U u a H30PV/DH30PC	2		BRUSH CAP
76	953-327	KABELKNICKSCHUTZ D8 8 DIV TYPEN	1		CORD ARMOR D8.8
76	938-051	KABELKNICKSCHUTZ D10 1 DIV TYPEN	1		CORD ARMOR D10.1
77	500-234Z		1	(CORD ARMOR D8.8)	CORD
77	500-247Z		1	"(CORD ARMOR D8.8) FOR FIN,DEN,SWE,NOR"	CORD

77	500-248Z		1	(CORD ARMOR D10.1) FOR SUI	CORD
78	937-631	KABELKLEMME DIV TYPEN	1		CORD CLIP
79	984-750	SCHNEIDSCHRAUBE D4X16 MIT FLANSCH	2		TAPPING SCREW (W/FLANGE) D4X16
80	316-446	ANLAUFWIDERSTAND C6BU/C7BU	1		RESISTOR
501	302-756	PARALLELANSCHLAG C6U/C7U/C6DD	1		GUIDE
502	872-422	INBUSSCHLUSSEL D6(M8)	1		HEX. BAR WRENCH 6MM
503	303-338	Knopf	1		KNOB
504	325-317	Plastiktransportkoffer C6U2 / C6BU2	1		CASE
601	317-848	FUHRUNGSLINEAL-ADAPTER KOMPLETT C6BU/U/C	1	INCLUD.602-607	GUIDE RAIL ADAPTER ASS'Y
602	317-849	SCHIENENSTAB C6BU/U/C7BU/U	1		RAIL BAR
603	317-850	STAB (LANG) C6BU/U/C7BU/U	1		BAR
604	317-851	STAB (KURZ) C6BU/U/C7BU/U	1		BAR
605	301-806	FLUGELSCHRAUBE M6X15	4		WING BOLT M6X15
606	949-237	+KOPFSCHRAUBE M5X12 (10ST)	2		MACHINE SCREW M5X12 (10 PCS.)
607	949-454	FEDERSCHEIBE M5 (10ST)	2		SPRING WASHER M5 (10 PCS.)