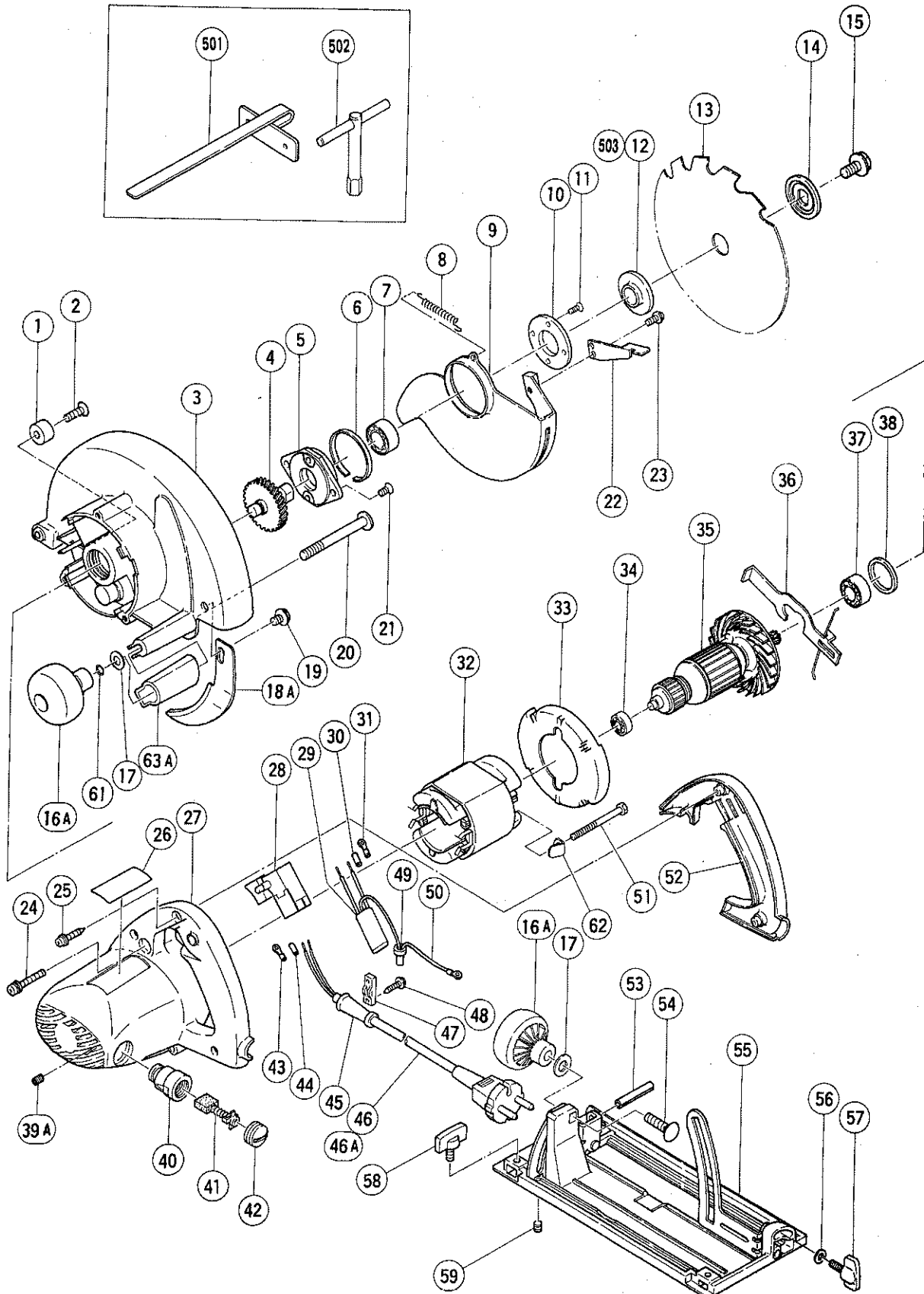


ELECTRIC TOOL PARTS LIST

■ CIRCULAR SAW
Model C 6U

1993 · 7 · 28
(E3)



PARTS

C 6U

ITEM NO.	CODE NO.	DESCRIPTION	NO. USED	REMARKS
1	961-729	CUSHION	1	
2	949-794	FLAT HD. SCREW M6X20 (10 PCS.)	1	
3	302-742	GEAR COVER ASS'Y	1	INCLUD.1,2,38
4	302-449	SPINDLE GEAR	1	
5	302-433	BEARING HOLDER	1	
6	961-807	BUSHING	1	
7	600-3VV	BALL BEARING 6003VVCMP2S	1	
8	302-463	RETURN SPRING	1	
9	302-461	SAFETY COVER	1	
10	302-435	BEARING COVER	1	
11	990-430	SEAL LOCK FLAT HD. SCREW M4X10	2	
* 12	302-444	WASHER (A)	1	FOR D20 HOLE
* 12	302-476 X	WASHER (A)	1	FOR D30 HOLE FOR GBR,ITA,FRG,HOL, DEN,FIN,SWE,AUT,NOR,ESP
* 12	302-443	WASHER (A)	1	FOR D16 HOLE FOR FRA,SUI
* 13	302-408	TCT SAW BLADE 165MM - D20 HOLE - NT14	1	
* 13	302-409	TCT SAW BLADE 165MM - D30 HOLE - NT14	1	
* 13	302-407	TCT SAW BLADE 165MM - D16 HOLE - NT14	1	
14	302-423	WASHER (B)	1	
15	302-427	FLANGE BOLT M8X15.5	1	
16A	302-458	KNOB	2	
17	949-433	BOLT WASHER M8 (10 PCS.)	2	
18A	303-838	RIVING KNIFE	1	
19	302-468	FLANGE BOLT M8X10 (BLACK)	1	
20	302-480	DIAGONAL BOLT M8	1	
21	992-013	SEAL LOCK FLAT HD. SCREW M5X14	2	
22	302-464	KNOB	1	
23	986-662	MACHINE SCREW (W/WASHERS) M4X10	1	
24	997-234	MACHINE SCREW (W/WASHERS) M5X35	3	
25	301-653	TAPPING SCREW (W/FLANGE) D4X20 (BLACK)	3	
26		NAME PLATE	1	
* 27	302-471	HOUSING ASS'Y	1	INCLUD.39,40
* 27	302-472	HOUSING ASS'Y	1	INCLUD.39,40 FOR GBR,ITA,FRG,HOL,DEN, FIN,NOR,ESP
* 27	302-473	HOUSING ASS'Y	1	INCLUD.39,40 FOR AUT
* 28	302-477	SWITCH (C) (1P SCREW TYPE) W/LOCK	1	
* 28	302-470	SWITCH (C) (1P SCREW TYPE) W/O LOCK	1	FOR GBR,ITA,FRG,HOL,DEN,FIN,AUT,NOR, ESP
* 28	963-756Z	SWITCH (2P PILLAR TYPE) W/SAFETY LOCK	1	FOR FRA,SWE,SUI
* 29	930-039	NOISE SUPPRESSOR	1	
* 29	994-273	NOISE SUPPRESSOR	1	FOR SUI
* 30	981-373	TUBE (D)	2	FOR FRA,SWE,SUI
* 31	980-063	TERMINAL	2	
* 31	930-804	TERMINAL M4.0 (10 PCS.)	2	FOR GBR,ITA,FRG,HOL,DEN,FIN,AUT,NOR, ESP
* 32	340-197C	STATOR 110V	1	
* 32	340-197E	STATOR 220V	1	
* 32	340-197F	STATOR 230V - 240V	1	
33	302-454	FAN GUIDE	1	
34	608-VVM	BALL BEARING 608VVMC2EPS2L	1	
* 35	360-186C	ARMATURE 110V	1	

*: ALTERNATIVE PARTS

