

Hitachi Power Tools

LIST NO. E508

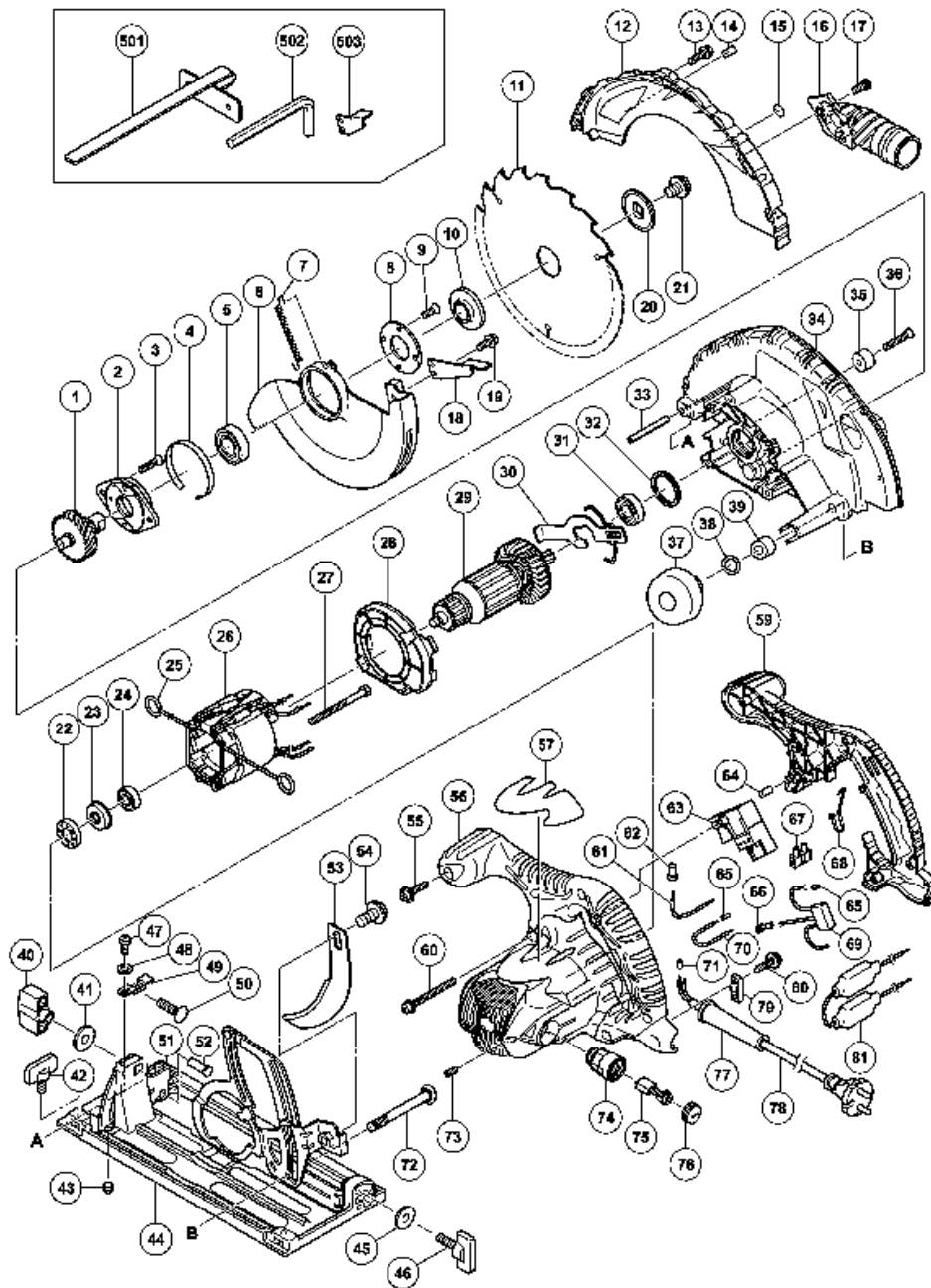
ELECTRIC TOOL PARTS LIST

■ CIRCULAR SAW

2005 · 8 · 30

Model C 7BU2

(E1)



C7BU2

Pos. Nr.	Art. Nr.	Beschreibung	Stueck	Kommentar	Beschreibung
1	302-988	ZAHNRAD M.WELLE C7U/C7BU	1		SPINDLE AND GEAR SET
2	302-433	LAGERHALTER C6U/BU/C7U/BU/FC6SB/	1		BEARING HOLDER
3	992-013	+SENKKOPFSCHRAUBE M5X14 SELBSTSI.	2		SEAL LOCK FLAT HD. SCREW M5X14
4	961-807	DISTANZBLECH C6U- C8U/C6BU/C7BU/	1		BUSHING
5	600-3VV	KUGELLAGER 6003 VV	1		BALL BEARING 6003VVCMP52L
6	324-661		1		SAFETY COVER
7	303-512	RÜCKHOLFEDER C7U/C7BU	1		RETURN SPRING
8	302-435	LAGERDECKEL DIV.TYPEN	1		BEARING COVER
9	990-430	+SENKKOPFSCHRAUBE M4X10 SELBSTSI.	2		SEAL LOCK FLAT HD. SCREW M4X10
10	302-476	SPANNSCHEIBE (A) C6U- C9U/	1		WASHER (A)
11	324-668		1		TCT SAW BLADE 190MM-D30 HOLE-NT18
12	324-654		1		SAW COVER
13	305-691		4		MACHINE SCREW (W/WASHERS) M4X14 (BLACK)
14			1		MODEL NAME PLATE
15			1		NAME PLATE (BRAKE)
16	324-669		1		DUST COLLECTOR
17	324-139		1		SPECIAL BOLT
18	302-464	KNAUF C6U- C9U/C6BU/C7BU/C6DD/	1		KNOB
19	304-043	+KOPFSCHRAUBE M4X10 M.U-SCHEIBE	1		MACHINE SCREW (W/WASHERS) M4X10 (BLACK)
20	302-423	SPANNSCHEIBE (B) C6U/BU/C7U/BU/	1		WASHER (B)
21	324-662		1		HEX. SOCKET HD. BOLT

					M8X15.5
22	325-060		1		RUBBER BUSHING
23	322-089		1		BEARING BUSHING
24	608-VVM	KUGELLAGER 608 VVM	1		BALL BEARING 608VVC2PS2L
25	930-703	KOHLLENHALTERKLEMME DH28Y u.a.	2		BRUSH TERMINAL
26	340-445G		1	INCLUD.25	STATOR ASS'Y 110V
26	340-425G		1	INCLUD.25	STATOR ASS'Y 230V
27	953-174	SCHNEIDSCHRAUBE D5X55	2		HEX. HD. TAPPING SCREW D5X55
28	324-656		1		FAN GUIDE
29	360-726C		1		ARMATURE 110V
29	360-726E		1		ARMATURE 230V
30	324-655		1		LOCK LEVER
31	600-1VV	KUGELLAGER 6001 VV	1		BALL BEARING 6001VVCMP2L
32	958-130	GUMMIRING C6U/C6BU/C7U/C7BU/	1		RUBBER RING
33	949-686	ROLLSTIFT D6X40 (10ST)	1		ROLL PIN D6X40 (10 PCS.)
34	324-653		1	"INCLUD.32,35,36"	GEAR COVER ASS'Y
35	961-729	PUFFER C6U-C9U/C6BU/C7BU/FC6SB/	1		CUSHION
36	949-794	+SENKKOPFSCHRAUBE M6X20 (10ST)	1		FLAT HD. SCREW M6X20 (10 PCS.)
37	324-660		1		KNOB
38	676-531	O-RING (P-7) C6U-C9U/C6BU/C7BU/	1		O-RING (P-7)
39	303-801	DISTANZHÜLSE C6BU/C7BU/C8U/C9U	1		SLEEVE
40	324-658		1		WING NUT M8
41	949-433	UNTERLEGSCHLEIBE M8 (10ST)	1		BOLT WASHER M8 (10 PCS.)
42	301-806	FLÜGELSCHRAUBE M6X15	1		WING BOLT M6X15
43	302-469	-STIFTSCHRAUBE M6X6 SELBSTSICH.	1		SLOTTED HD. SET SCREW (SEAL LOCK)

					M6X6
44	324-672		1	"INCLUD.40,41,45-52"	BASE ASS'Y (FLUORINE)
45	949-425	UNTERLEGSCHLEIBE M6 (10ST)	1		WASHER M6 (10 PCS.)
46	302-459	FLÜGELSCHRAUBE M6X17	1		WING BOLT M6X17
47	949-214	+KOPFSCHRAUBE M4X6 (10ST)	1		MACHINE SCREW M4X6 (10 PCS.)
48	949-453	FEDERSCHLEIBE M4 (10ST)	1		SPRING WASHER M4 (10 PCS.)
49	324-659		1		GUIDE PIECE
50	302-457	SCHLOSSSCHRAUBE M8X30 C6U-C9U u.a.	1		BOLT (SQUARE) M8X30
51	308-479	SKALENPLATTE C6BU/C7BU/C6DD/	1		BEVEL PLATE
52	308-480	NIETE D6X17 C6U-C8U/C6BU/C7BU/	2		RIVET D6X17
53	324-663		1		RIVING KNIFE
54	324-664		1		HEX. SOCKET HD. BOLT M8X10
55	301-653	SCHNEIDSCHRAUBE D4X20 MIT FLANSCH	5		TAPPING SCREW (W/FLANGE) D4X20 (BLACK)
56	324-682		1	"INCLUD.73,74"	HOUSING ASS'Y
57			1		NAME PLATE
59	324-683		1		HANDLE COVER
60	302-434	+KOPFSCHRAUBE M5X45 M.U-SCHEIBE	3		MACHINE SCREW (W/WASHERS) M5X45 (BLACK)
61	324-680		1		INTERNAL WIRE (BLUE) 70L
62	959-141	VERBINDER 50092 (10ST) DIV.TYPEN	1		CONNECTOR 50092 (10 PCS.)
63	316-445	SCHALTER C6UB/7UB	1		SWITCH (B) (2P PILLER TYPE) W/SAFETY LOCK
64	946-362	LAGERVERRIEGELUNG (DIV.TYPEN)	1		BEARING LOCK
65	981-373	ADERENDHÜLSE (D) DIV.TYPEN	2		TUBE (D)
65	981-373	ADERENDHÜLSE (D) DIV.TYPEN	1	FOR GBR (110V)	TUBE (D)
66	961-419Z	KLEMME CM6/CS35B/D13/u.a.	1	FOR GBR (110V)	TERMINAL

67	938-307	SCHRAUBKLEMME 1-REIHIG DIV.TYPEN	1		PILLAR TERMINAL
68	313-505	KABELKLEMME CL10SA	1		WIRE BAND
69	930-039	KONDENSATOR C6U-C13U u.a.	1		NOISE SUPPRESSOR
69	994-273	KONDENSATOR DIV.TYPEN	1	FOR GBR (110V)	NOISE SUPPRESSOR
70	324-681		1	EXCEPT FOR GBR (110V)	INTERNAL WIRE (BLUE) 100L
71	981-373	ADERENDHÜLSE (D) DIV.TYPEN	1	FOR CORD	TUBE (D)
72	316-444	DIAGONAL-SCHRAUBE M8X105 C6BU/7BU	1		DIAGONAL BOLT M8X105
73	938-477	INBUSSTIFTSCHRAUBE M5X8	2		HEX. SOCKET SET SCREW M5X8
74	960-685	KOHLLENHALTER C6BU/C7BU	2		BRUSH HOLDER
75	999-056	KOHLEBÜRSTEN (1PAAR) C6BU/C7BU	2		CARBON BRUSH (1 PAIR)
76	945-161	KOHLLENKAPPE C6U/C7U u.a.	2		BRUSH CAP
77	953-327	KABELKNICKSCHUTZ D8.8 DIV.TYPEN	1		CORD ARMOR D8.8
77	938-051	KABELKNICKSCHUTZ D10.1 DIV.TYPEN	1		CORD ARMOR D10.1
78	500-234Z	ANSCHLUSSKABEL MIT STECKER	1	(CORD ARMOR D8.8)	CORD
78	500-247Z	ANSCHLUSSKABEL MIT STECKER	1	"(CORD ARMOR D8.8) FOR FIN,NOR,SWE,DEN"	CORD
78	500-435Z		1	(CORD ARMOR D8.8) FOR GBR (230V)	CORD
78	500-461Z		1	(CORD ARMOR D8.8) FOR GBR (110V)	CORD
78	500-248Z		1	(CORD ARMOR D10.1) FOR SUI	CORD
79	937-631	KABELKLEMME DIV.TYPEN	1		CORD CLIP
80	984-750	SCHNEIDSCHRAUBE D4X16 MIT FLANSCH	2		TAPPING SCREW (W/FLANGE) D4X16
81	316-446	ANLAUFWIDERSTAND C6BU/C7BU	1	EXCEPT FOR GBR (110V)	RESISTOR
501	302-756	PARALLELANSCHLAG C6U/C7U/C6DD	1		GUIDE
502	872-422	INBUSSCHLÜSSEL D6(M8)	1		HEX. BAR WRENCH 6MM

503	303-338		1		KNOB
504	325-318		1		CASE
601	317-848	FÜHRUNGSLINEAL- ADAPTER KOMPLETT	1	INCLUD.602-607	GUIDE RAIL ADAPTER ASS'Y
602	317-849	SCHIENENSTAB C6BU/U/C7BU/U	1		RAIL BAR
603	317-850	STAB (LANG) C6BU/U/C7BU/U	1		BAR
604	317-851	STAB (KURZ) C6BU/U/C7BU/U	1		BAR
605	301-806	FLÜGELSCHRAUBE M6X15	4		WING BOLT M6X15
606	949-237	+KOPFSCHRAUBE M5X12 (10ST)	2		MACHINE SCREW M5X12 (10 PCS.)
607	949-454	FEDERSCHEIBE M5 (10ST)	2		SPRING WASHER M5 (10 PCS.)
			0		
			0		
			0		