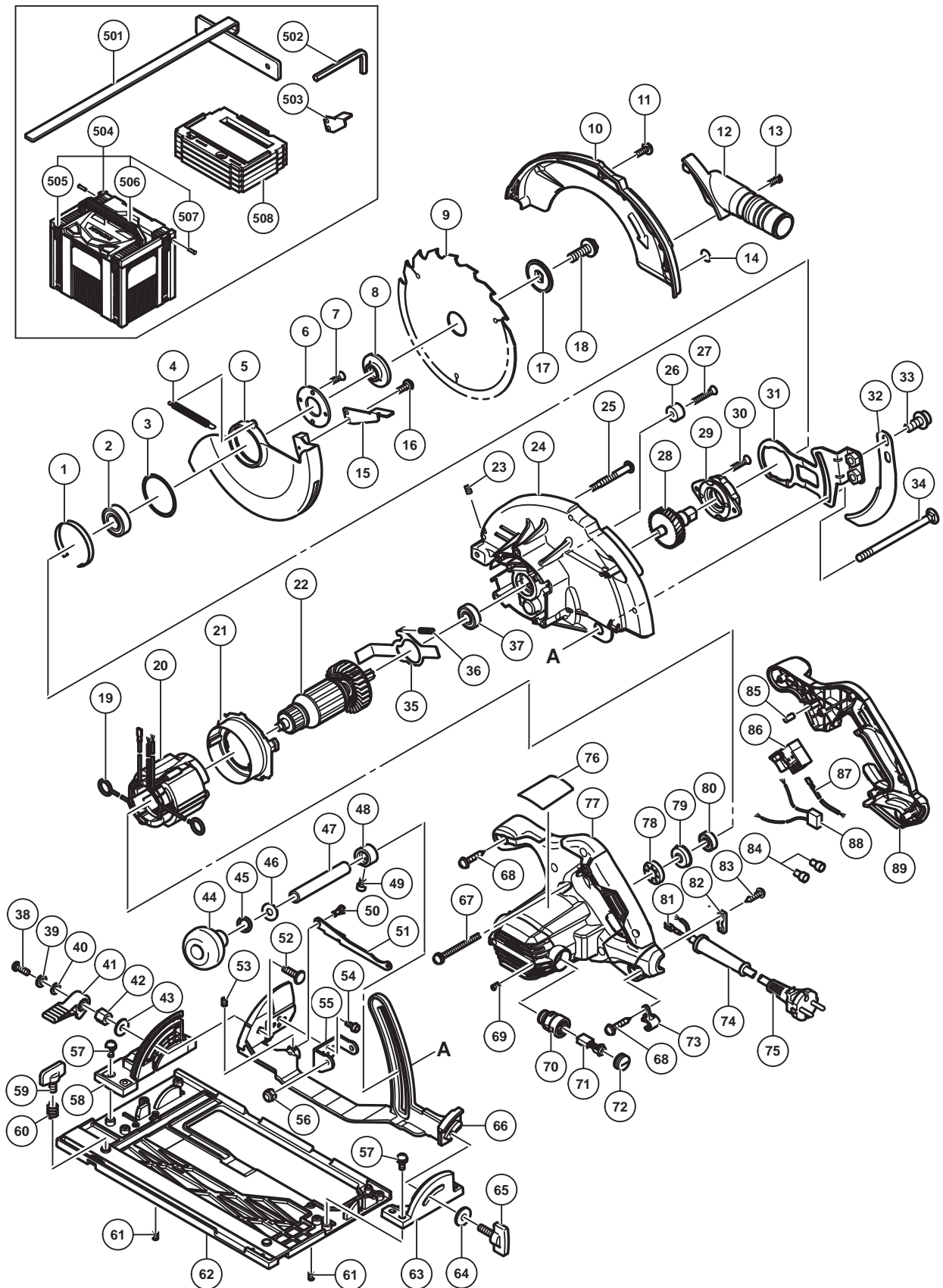


## ELECTRIC TOOL PARTS LIST

### ■ CIRCULAR SAW Model C 7BUM

2016-7-20  
(E1)



**PARTS**

C 7BUM

ITEM NO.	CODE NO.	DESCRIPTION	NO. USED	REMARKS
1	998887	LINER	1	
2	327694	BALL BEARING 6003VVCM (NYLON RETAINER)	1	
3	370591	WASHER	1	
4	370373	RETURN SPRING	1	
5	370356	LOWER GUARD	1	
6	302435	BEARING COVER	1	
7	990430	SEAL LOCK FLAT HD. SCREW M4 X 10	2	
8	370272	WASHER (A)	1	
9	324668	TCT SAW BLADE 190MM-D30 HOLE-NT18	1	
10	370354	SAW COVER	1	
11	951039	MACHINE SCREW (W/SP. WASHER) M4 X 12	3	
12	997247	DUST COLLECTOR	1	
13	935196	MACHINE SCREW (W/WASHERS) M4 X 12 (BLACK)	1	
14		NAME PLATE (BRAKE)	1	
15	370542	LEVER	1	
16	935196	MACHINE SCREW (W/WASHERS) M4 X 12 (BLACK)	1	
17	370279	WASHER (B)	1	
18	324662	HEX. SOCKET HD. BOLT M8 X 15.5	1	
19	930703	BRUSH TERMINAL	2	
20	340946E	STATOR ASS'Y 220V-230V	1	INCLUD.19
21	370342	FAN GUIDE	1	
22	361037E	ARMATURE 220V-230V	1	
23	962782	HEX. SOCKET SET SCREW M5 X 6	1	
24	370350	GEAR COVER	1	
25	322096	ADJUSTING SCREW (A)	1	
26	961729	CUSHION	1	
27	949794	FLAT HD. SCREW M6 X 20 (10 PCS.)	1	
28	370371	SPINDLE AND GEAR SET	1	
29	370353	BEARING HOLDER	1	
30	992013	SEAL LOCK FLAT HD. SCREW M5 X 14	2	
31	370364	ARM	1	
32	370365	RIVING KNIFE	1	
33	370287	HEX. SOCKET HD. BOLT M8	2	
34	370662	DIAGONAL BOLT M8	1	
35	370363	LOCK LEVER	1	
36	330982	SPRING (A)	1	
37	6001VV	BALL BEARING 6001VV	1	
38	333922	MACHINE SCREW M6 X 14	1	
39	949455	SPRING WASHER M6 (10 PCS.)	1	
40	949425	WASHER M6 (10 PCS.)	1	
41	323923	LEVER (A)	1	
42	333921	LOCK NUT	1	
43	318452	WASHER (G)	1	
44	324660	KNOB	1	
45	676531	O-RING (P-7)	1	
46	949433	BOLT WASHER M8 (10 PCS.)	1	
47	370825	SLEEVE (A)	1	
48	370268	SLEEVE (B)	1	
49	370278	SEAL LOCK HEX. SOCKET HD. BOLT M4 X 6	1	
50	320163	STEP PIN D6 X 13	1	



