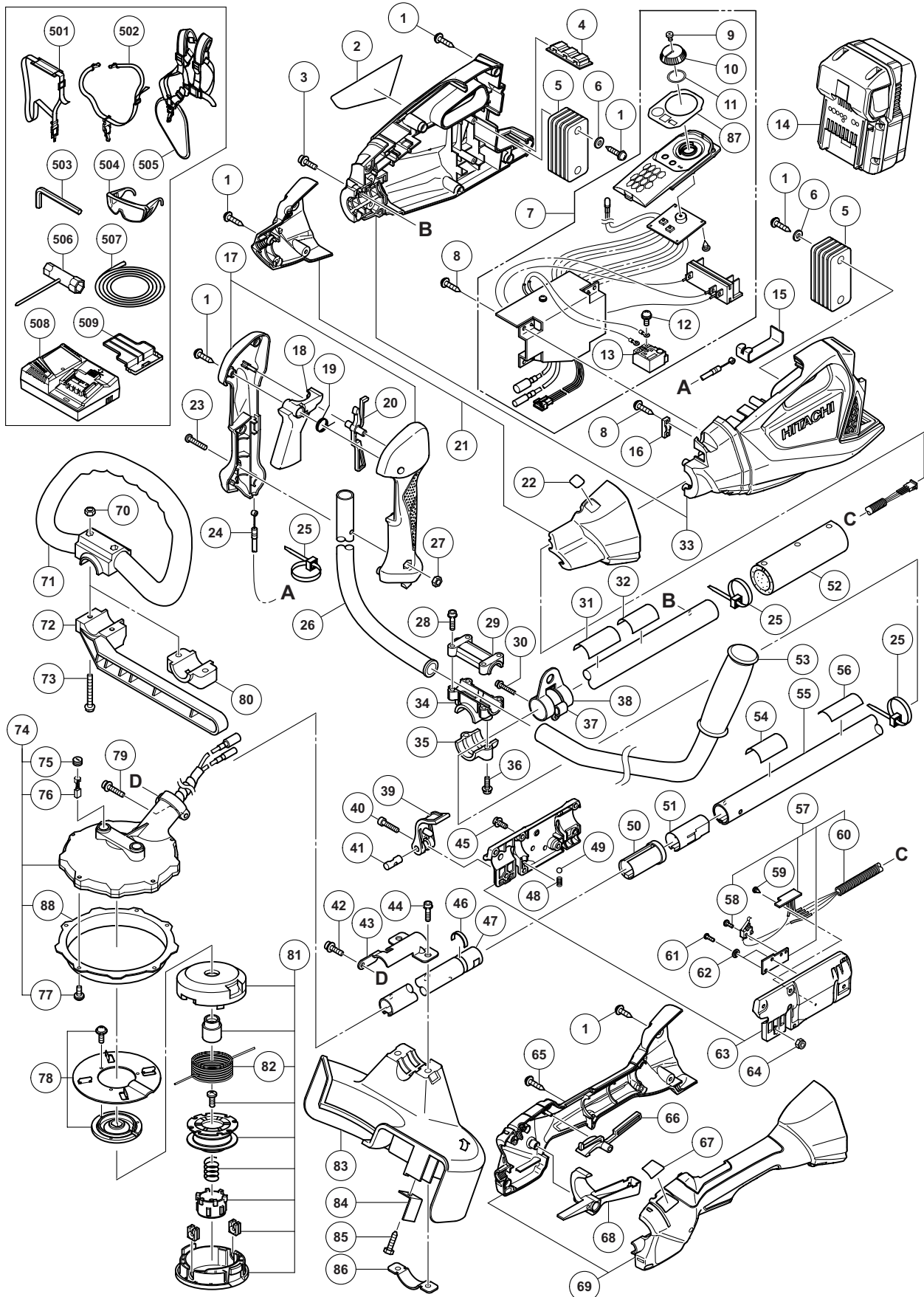


## ELECTRIC TOOL PARTS LIST

### ■ CORDLESS GRASS TRIMMER Model CG 36DAL

2013·2·20  
(E2)



**PARTS**

CG 36DAL

ITEM NO.	CODE NO.	DESCRIPTION	NO. USED	REMARKS
1	301-653	TAPPING SCREW (W/FLANGE) D4 X 20 (BLACK)	21	
2		NAME PLATE	1	
3	996-728	HEX. SOCKET HD. BOLT (W/WASHERS) M5 X 16	1	
4	332-668	RUBBER CUSHION	1	
5	335-748	COUNTER WEIGHT	10	
6	329-140	WASHER (M)	4	
* 7	335-747	CONTROLLER ASS'Y	1	INCLUD. 9-13
* 7	335-745	CONTROLLER ASS'Y	1	INCLUD. 9-13 FOR MODEL (L)
* 7	335-746	CONTROLLER ASS'Y	1	INCLUD. 9-13 FOR USA, CAN
8	984-750	TAPPING SCREW (W/FLANGE) D4 X 16	6	
9	333-162	MACHINE SCREW M1.7 X 3.5	1	
10	876-031	O-RING (S-16)	1	
11	332-550	DIAL	1	
12	980-060	MACHINE SCREW (W/WASHER) M3.5 X 5	2	
13	332-552	SWITCH	1	
14	334-998	BATTERY BSL 3620 (EUROPE, AUS, NZL)	1	
15	330-771	PLATE	1	
16	937-631	CORD CLIP	1	
17	334-541	HANDLE (A).(B) SET	1	
18	334-544	LEVER	1	
19	332-557	SPRING	1	
20	669-6490	LOCK LEVER	1	
21	335-230	COVER (A).(B) SET	1	
22		LABEL (B)	1	
23	323-041	MACHINE SCREW M5 X 30 (BLACK)	1	
24	335-749	WIRE	1	
25	988-054	CABLE TIE	3	
* 26	335-750	HANDLE RIGHT	1	
* 26	335-751	HANDLE RIGHT	1	FOR AUS
27	302-012	NUT M5 (BLACK)	1	
28	668-4709	HEX. HOLE BOLT M5 X 25/S	4	
29	334-554	HANDLE BRACKET (A)	1	
30	669-5515	HEX. HOLE BOLT 5 X 25WS	1	
* 31		CAUTION LABEL (D)	1	
* 31		CAUTION MARK (B) USA	1	FOR USA, CAN
* 32		CAUTION LABEL (C)	1	
* 32		CAUTION MARK (A) USA	1	FOR USA, CAN
33	335-228	HOUSING (A).(B) SET	1	
34	334-555	HANDLE HOLDER (B)	1	
35	334-556	HANDLE HOLDER (C)	1	
36	668-4714	HEX. HOLE BUTTON SCREW 6 X 25S	2	
37	668-9293	HANGER FIXING BRACKET	1	
38	668-9278	HANGER	1	
39	334-550	HOLDER LEVER	1	
40	949-664	HEX. SOCKET HD. BOLT M5 X 30 (10 PCS.)	1	
41	334-560	HOLDER SHAFT	1	
42	668-4667	HEX. HOLE BOLT M5 X 12/S	1	
43	333-321	COVER BRACKET	1	
44	668-4714	HEX. HOLE BUTTON SCREW 6 X 25S	2	
45	316-107	HEX. SOCKET HD. BOLT (W/WASHERS) M5 X 20	6	

**PARTS**

CG 36DAL

ITEM NO.	CODE NO.	DESCRIPTION	NO. USED	REMARKS
46		RETAINING RING	1	
47	334-547	MAIN PIPE (B)	1	
48	334-562	SPRING (B)	1	
49	959-150	STEEL BALL D6.35 (10 PCS.)	1	
50	334-553	SLEEVE (B)	1	
51	334-552	SLEEVE (A)	1	
52	334-847	WAIST PROTECTOR	1	
* 53	669-8638	HANDLE LEFT	1	
* 53	669-6595	HANDLE LEFT	1	FOR AUS
* 54		WARNING LABEL (G)	1	FOR USA, CAN
55	334-546	MAIN PIPE (A)	1	
* 56		LEVEL MARK (B)	1	FOR MODEL (L) EXCEPT FOR USA, CAN
* 57	335-754	SENSOR ASS'Y	1	INCLUD. 58, 60
* 57	335-755	SENSOR ASS'Y	1	INCLUD. 58, 60 FOR MODEL (L)
58	306-622	MACHINE SCREW (W/WASHERS) M3 X 10	1	
59	327-174	TP TAPPING SCREW D3 X 8	1	
* 60	335-765	PROTECTION TUBE L670	1	
* 60	335-766	PROTECTION TUBE L465	1	FOR MODEL (L)
61	949-203	MACHINE SCREW M3 X 8 (10 PCS.)	2	
62	949-451	SPRING WASHER M3 (10 PCS.)	2	
63	335-753	HOLDER CASE (A).(B) SET	1	
64	877-371	NYLON NUT M5	1	
* 65	334-333	TAPPING SCREW D3 X 12 (BLACK)	1	FOR MODEL (L)
* 66	335-752	LOCK LEVER	1	FOR MODEL (L)
* 67		LABEL (D)	1	FOR MODEL (L)
* 68	335-239	LEVER	1	FOR MODEL (L)
69	335-232	HANDLE (A).(B) SET	1	
* 70	949-556	NUT M6 (10 PCS.)	1	FOR MODEL (L)
* 71	669-9030	LOOP HANDLE	1	FOR MODEL (L)
* 72	669-9032	BARRIER	1	FOR MODEL (L) EXCEPT FOR USA, CAN
* 73	669-6974	BOLT (BLACK) M6	1	FOR MODEL (L)
* 74	335-222	DISC MOTOR ASS'Y	1	INCLUD. 75-77
* 74	335-741	DISC MOTOR ASS'Y	1	INCLUD. 75-77 FOR MODEL (L) FOR EUROPE
* 74	335-223	DISC MOTOR ASS'Y	1	INCLUD. 75-77 FOR USA, CAN
75	334-294	BRUSH CAP	2	
76	999-016	CARBON BRUSH (1 PAIR)	2	
77	333-163	MACHINE SCREW (BLACK) M4 X 16	5	
78	335-758	FLANGE	1	
79	668-4973	HEX. HOLE BOLT M5 X 30/WS	1	
* 80	669-9031	HANDLE HOLDER (A)	1	FOR MODEL (L) FOR USA, CAN
81	335-234	NYLON HEAD	1	INCLUD. 82
82	335-235	NYLON CORD D2.0 X 4M	1	
83	333-899	COVER	1	
84	668-4754	KNIFE	1	
85	668-4753	TAPPING SCREW 5 X 20	1	
86	669-6951	GUARD HOLDER	1	
87	335-767	PANEL SHEET	1	
88	334-297	FAN COVER	1	

