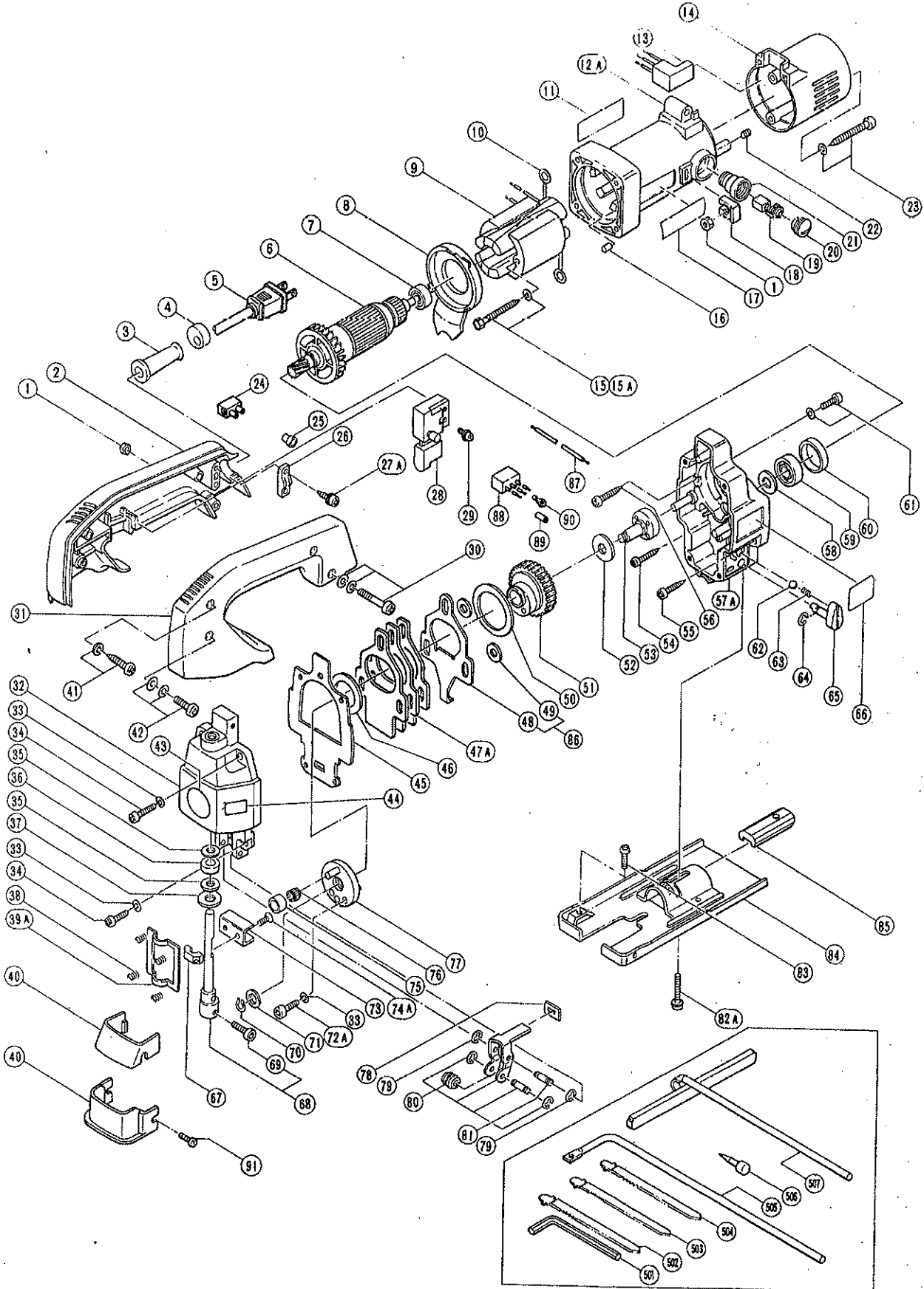


ELECTRIC TOOL PARTS LIST

■ ELECTRONIC JIG SAW
Model CJ65V

1987·11·30
CJ65V(E3)



PARTS

CJ65V(E3)

Item No.	Code No.	Part Name	Q'ty	Remarks
1	949554	Nut M4	1	(10 pcs.)
2	963372	Handle (A)	1	
3	—	Cord Armor	1	See alternative parts
4	940928	Wrench Holder	1	
5	—	Cord	1	See alternative parts
6	—	Armature	1	See alternative parts
7	939291	Ball Bearing (608VVC2)	1	
8	963374	Fan Guide	1	
9	—	Stator Ass'y	1	See alternative parts
10	930630	Brush Terminal	2	
11	—	Name Plate	1	
12A	991409	Housing Ass'y	1	includes 15A, 21, 22
13	—	Control Circuit	1	See alternative parts
14	963375	Tail Cover	1	
15	986541	Machine Screw M4 x 60	2	w/Spring Lock Washer till 4, 1987
15A	963712	Hexagon Hd. Tapping Screw D4 x 65	2	since 5, 1987
16	931701	Bearing Lock	1	till 2, 1987
17	950565	HITACHI Label	1	
18	963341	Nut Cover	2	till 4, 1987
19	—	Carbon Brush	2	See alternative parts
20	937847	Brush Cap	2	
21	937846	Brush Holder	2	
22	963383	Hexagon Socket Hd. Set Screw M4 x 8	2	
23	963388	Tapping Screw D4 x 60	2	w/Washer
24	—	Pillar Terminal	1	See alternative parts
25	959140	Connector (50091)	1	(10 pcs.)
26	960266	Cord Clip	1	
27A	984750	Tapping Screw D4 x 16	2	w/Flange
28	—	Switch	1	See alternative parts
29	980060	Machine Screw M3.5 x 5	2	w/Washer
30	963387	Machine Screw M4 x 30	1	w/Spring Lock Washer, Washer
31	963373	Handle (B)	1	
32	—	Upper Cover Ass'y	1	See alternative parts
33	949453	Spring Lock Washer	6	for M4 (10 pcs.)
34	949219	Machine Screw M4 x 16	4	(10 pcs.)
35	963356	Washer (C)	2	
36	963354	Felt (A)	1	
37	963355	Washer (D)	1	
38	963362	Spring	4	
39A	963361	Plate	1	
40	—	Chip Cover	1	See alternative parts
41	956636	Tapping Screw D4 x 25	2	w/Washer
42	954878	Machine Screw M4 x 16	2	w/Spring Lock Washer, Washer
43	962994	Mark Plate	1	
44	—	Caution Plate	1	See alternative parts
45	963352	Packing	1	
46	963349	Washer (A)	1	
47A	963658	Balance Weight	1	
48	963641	Orbital Cam (C)	1	
49	963642	Washer	2	
50	963347	Washer (A)	1	
51	963344	Gear	1	
52	957540	Washer (A)	1	

PARTS

CJ65V(E3)

Item No.	Code No.	Part Name	Q'ty	Remarks
53	963343	Spindle	1	
54	958705	Tapping Screw D4 x 25	1	
55	956384	Tapping Screw D4 x 20	1	
56	954015	Tapping Screw D4 x 35	2	
57A	963396	Gear Cover	1	
58	958246	Felt Packing	1	till 5, 1985
59	939465	Ball Bearing (629DD)	1	
60	957754	Rubber Ring	1	till 5, 1985
61	991207	Machine Screw M4 x 8	4	(Seal Lock Screw) w/Spring Lock Washer
62	959155	Steel Ball D3.969	1	(10 pcs.)
63	982454	Spring (C)	1	
64	673489	E-Type Retaining Ring	1	for \varnothing 5 shaft
65	963368	Change Knob	1	
66	963380	Orbital Label	1	
67	963359	Connector Holder	1	
68	—	Plunger Ass'y	1	See alternative parts
69	949811	Hexagon Socket Hd. Bolt M4 x 8	1	(10 pcs.)
70	940079	C-Type Retaining Ring	1	for D8 shaft
71	963351	Washer (B)	1	
72A	983162	Hexagon Socket Hd. Bolt M4 x 12	2	(Seal Lock Bolt)
73	963358	Connector	1	
74A	991398	Flat Hd. Screw M4 x 10	2	(made of stainless steel)
75	940916	Connecting Piece	1	
76	940917	Needle Roller (K6/8)	1	
77	963350	Weight Holder	1	
78	963367	Felt (B)	1	
79	874759	E-Type Retaining Ring	2	for D2.5 shaft
80	963363	Guide Roller	1	
81	963366	Holder Pin	1	
82A	963398	Hexagon Socket Hd. Bolt M4 x 20	1	w/Flange
83	949235	Machine Screw M5 x 8	1	(10 pcs.)
84	963370	Base	1	
85	963371	Base Locker	1	
86	963389	Orbital Cam Ass'y	1	includes 48, 49
87	—	Internal Wire	1	See alternative parts
88	—	Noise Suppressor	1	See alternative parts
89	—	Tube (D)	2	See alternative parts
90	980063	Terminal	1	for Noise Suppressor
91	—	Machine Screw M4 x 12	2	See alternative parts

ALTERNATIVE PARTS

Item No.	Code No.	Part Name	Q'ty	Remarks
3	953327	Cord Armor D8.8	1	
	938051	Cord Armor D10.1	1	
5	500212Z	Cord 110V	1	(Cord Armor D8.8)
	500240Z	Cord 115V	1	for U.S.A. (Cord Armor D8.8)
	500243Z	Cord 220V	1	for Europe (Cord Armor D8.8)
	500237Z	Cord 110V ~ 240V	1	for U.K. (Cord Armor D8.8)
	500245Z	Cord 220V	1	for Syria (Cord Armor D10.1)
	500409Z	Cord 220V	1	for Indonesia (Cord Armor D8.8)

ALTERNATIVE PARTS

CJ65V(E3)

Item No.	Code No.	Part Name	Q'ty	Remarks
6	963638C	Armature 110V ~ 115V	1	
	963638E	Armature 220V ~ 230V	1	
	963638G	Armature 220V ~ 230V	1	for Europe
	963638H	Armature 240V	1	for U.K.
	963638J	Armature 110V	1	for U.K.
9	963637C	Stator Ass'y 110V ~ 115V	1	includes 10
	963637E	Stator Ass'y 220V ~ 230V	1	includes 10
	963643G	Stator Ass'y 220V ~ 230V	1	for Europe includes 10
	963643H	Stator Ass'y 240V	1	for U.K. includes 10
	963643J	Stator Ass'y 110V	1	for U.K. includes 10
13	963377	Control Circuit 110V ~ 127V	1	
	991406	Control Circuit 220V ~ 240V	1	
	991407	Control Circuit 220V ~ 240V	1	for Europe
	991405	Control Circuit 110V	1	for U.K.
19	999021	Carbon Brush	2	(2 pcs.)
	999084	Carbon Brush	2	Auto stop type for U.S.A. (2 pcs.)
24	938307Z	Pillar Terminal	1	for U.S.A.
28	957747	Single Pole Switch (Screw Type)	1	W/Lock
	971667Z	Double Pole Switch (Pillar Type)	1	W/Lock for Europe
32	963353	Upper Cover Ass'y	1	includes 35 ~ 37
	963397	Upper Cover Ass'y	1	for F.R. Germany includes 35 ~ 37
40	963376	Chip Cover	1	for F.R. Germany
	963648	Chip Cover (B)	1	for F.R. Germany
44	963646	Caution Plate		for U.S.A.
68	963357	Plunger Ass'y	1	includes 69
	963628Z	Plunger Ass'y	1	for U.S.A., Europe includes 69
87	—	Internal Wire	1	for Europe
88	991313	Noise Suppressor	1	for Europe
89	981373	Tube (D)	2	for Europe
91	986348	Machine Screw M4 x 12	2	W/Spring Lock Washer, Washer for Chip Cover (B)

