

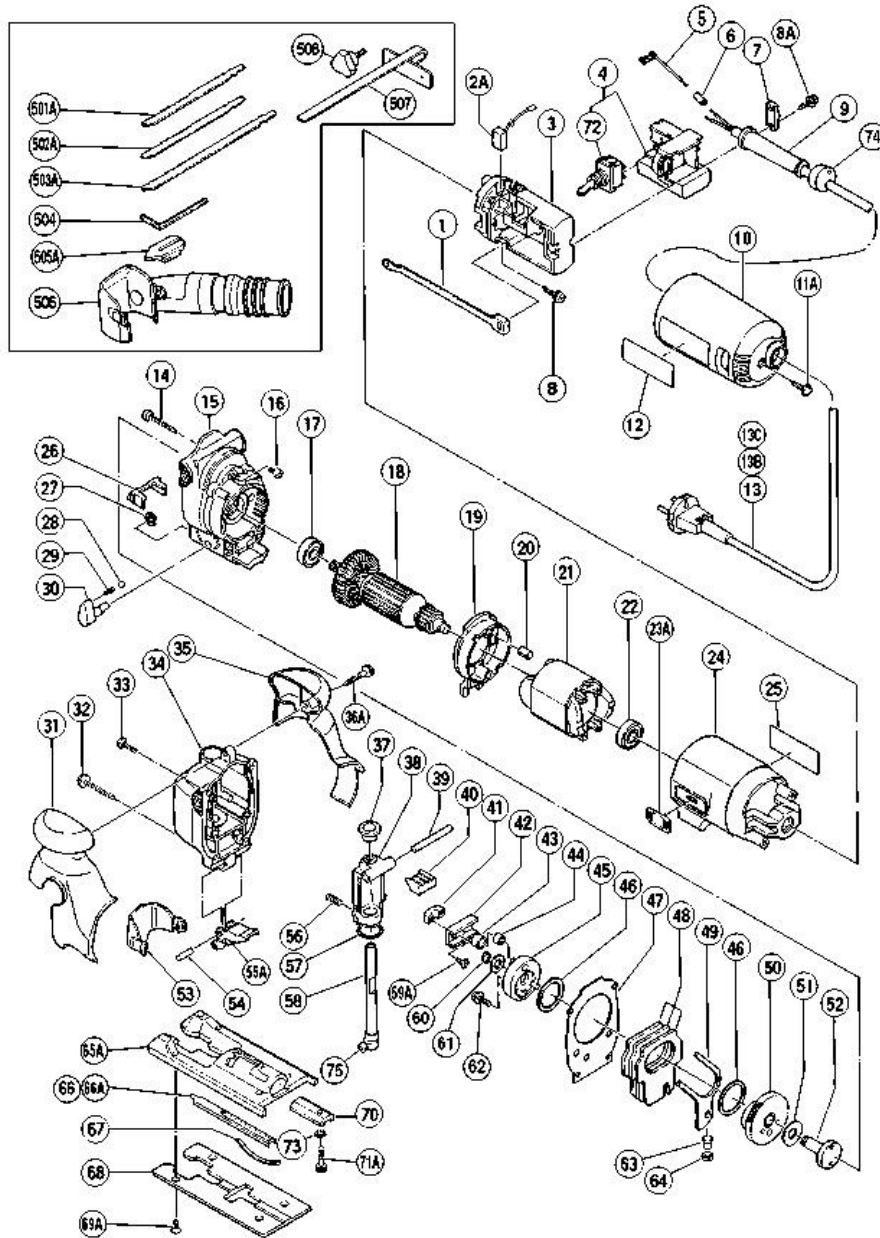
# HITACHI

LIST NO. 0573

## ELECTRIC TOOL PARTS LIST

■ JIG SAW  
Model CJ 65VA2

2001-6-1  
(E3-1)



## CJ65VA2

Pos. Nr.	Art. Nr.	Beschreibung	Stueck	Kommentar	Beschreibung
1	305-731	SCHIEBESTAB CJ65VA2	1		SLIDE BAR
2A	999-075	KOHLEBURSTEN SELBSTABSCH (PAAR)	2		CARBON BRUSH (AUTO STOP TYPE) (1 PAIR)
3	305-763	ANSCHLUSSBLOCK (A) CJ65VA2	1		WIRING BLOCK (A)
4	305-769	KABELBLOCK (B) CJ65V2	1	INCLUD.72	WIRING BLOCK (B) ASS'Y
4	305-766	REGELEINHEIT KOMPL MIT SCHALTER CJ65VA2	1	INCLUD.72 FOR NZL,GBR (240V),SAF,ITA,	WIRING BLOCK (B) ASS'Y
			0	FRG,FRA,HOL,DEN,FIN,SWE,AUT,NOR,SUI	
4	305-765		1	INCLUD.72 FOR GBR (110V)	WIRING BLOCK (B) ASS'Y
4	305-768		1	INCLUD.72 FOR USA,CAN	WIRING BLOCK (B) ASS'Y
5	305-764	VERBINDERKABEL CJ65VA2	2		INTERNAL WIRE
6	959-142		2		CONNECTOR 50096 (10 PCS.)
7	960-266	KABELKLEMME DIV TYPEN	1		CORD CLIP
8	984-750	SCHNEIDSCHRAUBE D4X16 MIT FLANSCH	2		TAPPING SCREW (W/FLANGE) D4X16
8A	305-812	SCHNEIDSCHRAUBE D4X16 MIT FLANSCH (SCHWA	2		TAPPING SCREW (W/FLANGE) D4X16 (BLACK)
9	953-327	KABELKNICKSCHUTZ D8 8 DIV TYPEN	1		CORD ARMOR D8.8
9	938-051	KABELKNICKSCHUTZ D10 1 DIV TYPEN	1		CORD ARMOR D10.1
10	305-770	ABDECKKAPPE CJ65VA2	1		TAIL COVER
11A	309-470	SCHNEIDSCHRAUBE D4X12 MIT FLANSCH (SCHWA	1		TAPPING SCREW (W/FLANGE) D4X12 (BLACK)

12			1		HITACHI LABEL
13	500-432Z		1	(CORD ARMOR D8.8) FOR USA	CORD
13	500-409Z	ANSCHLUSSKABEL MIT STECKER	1	(CORD ARMOR D8.8)	CORD
13	500-423Z		1	(CORD ARMOR D8.8) FOR SIN,KUW	CORD
13	500-439Z	Anschlusskabel Neue Art -Nr 714500	1	(CORD ARMOR D8.8) FOR NZL,AUS	CORD
13	500-247Z		1	(CORD ARMOR D10.1) FOR SWE	CORD
13	500-240Z		1	(CORD ARMOR D8.8) FOR CAN	CORD
13	500-245Z		1	(CORD ARMOR D10.1) FOR SYR	CORD
13	500-395Z		1	(CORD ARMOR D8.8) FOR SUI	CORD
13B	500-461Z		1	(CORD ARMOR D8.8) FOR GBR (110V)	CORD
13C	500-234Z		1	(CORD ARMOR D8.8) FOR SAF	CORD
14	954-014		2		TAPPING SCREW D4X30
15	305-733	GETRIEBEGEHAUSE CJ65V2/VA2	1		GEAR COVER
16	305-735	INBUSSCHRAUBE M4X6 MIT FLANSCH	2		HEX. SOCKET HD. BOLT (W/FLANGE) M4X6
17	608-DDW	KUGELLAGER 608DDW	1		BALL BEARING 608DDW
18	360-277C		1		ARMATURE 110V-115V
18	360-277E	ANKER 220V-230V CJ65V2/VA2/CJ110V	1		ARMATURE 220V-230V
18	360-277F		1		ARMATURE 240V
19	305-729	LUFTFUHRUNG KOMPL CJ65VA2	1	INCLUD.20	FAN GUIDE ASS'Y
20	994-343	GUMMIPUFFER D10VD/D13VB/DH20PB	2		RUBBER BUSHING
21	340-249C		1		STATOR 110V-115V
21	340-249E	STATOR 220V-230V CJ65V2/VA2/ CJ110V	1		STATOR 220V-230V
21	340-249F		1		STATOR 240V

22	608- DDM	KUGELLAGER 608DDM	1		BALL BEARING 608DDC2PS2L
23A	305- 732	SCHALTERKNOPF CJ65VA2	1		SLIDE KNOB
24	305- 728	MOTORGEHAUSE CJ65VA2	1		HOUSING
25			1		NAME PLATE
26	305- 753	ZWISCHENSTUCK CJ65V2/VA2	1		SHOOTER
27	673- 489	SICHERUNGSRING (E-TYP) D5	1		RETAINING RING (E- TYPE) FOR D5 SHAFT
28	959- 155	STAHLKUGELN D3 97 (10ST)	1		STEEL BALL D3.97 (10 PCS.)
29	982- 454	FEDER (C) CJ65VA2/V2/CR10V/CJ120V	1		SPRING (C)
30	305- 744	UMSCHALTKNOPF CJ65V2/VA2/CJ110V	1		CHANGE KNOB
31	305- 756	ABDECKUNG (A) CJ65VA2	1		COVER (A)
32	305- 736	SCHNEIDSCHRAUBE D4X65 MIT FLANSCH	2		TAPPING SCREW (W/FLANGE) D4X65
33	949- 219	+KOPFSCHRAUBE M4X16 (10ST)	2		MACHINE SCREW M4X16 (10 PCS.)
34	305- 762	TAUCHKOLBENGEHAUSE CJ65V2/VA2	1		UPPER COVER
35	305- 757	ABDECKUNG (B) CJ65VA2	1		COVER (B)
36A	307- 028	SCHNEIDSCHRAUBE D4X25 MIT FLANSCH (SCHWA	1		TAPPING SCREW (W/FLANGE) D4X25 (BLACK)
37	305- 746	DICHTUNGSPACKUNG CJ65V2/VA2	1		RUBBER PACKING
38	305- 745	TAUCHKOLBENHALTER CJ65V2/VA2	1	INCLUD.57	PLUNGER HOLDER ASS'Y
39	961- 181	SPANNSTIFT D6X47 CJ65VA2/V2	1		PIN D6X47
40	305- 751	GUMMIPUFFER CJ65V2/VA2/CJ110V	1		RUBBER CUSHION
41	305- 748	VERBINDERHALTER CJ65V2/VA2	1		CONNECTOR HOLDER
	305-				

42	747	VERBINDER CJ65V2/VA2	1		CONNECTOR
43	940-916	VERBINDERTEIL CJ65V2/VA2/CJ110V	1		CONNECTING PIECE
44	940-917	NADELLAGER K6X9X8T2 CJ65V2/VA2/ CJ110V/C	1		NEEDLE BEARING NTN K6X9X8T2
45	305-742	GEWICHTHALTER CJ65V2/VA2/CJ110V CJ120V/V	1		WEIGHT HOLDER
46	963-349	UNTERLEGSSCHEIBE (A) CJ65VA2/V2/ CJ110V/C	2		WASHER (A)
47	305-743	DICHTUNG CJ65V2/VA2/CJ110V	1		PACKING
48	305-741	AUSGLEICHGEWICHT (3ST) CJ65V2/VA2 CJ110V	3		BALANCE WEIGHT (3 PCS.)
49	305-738	EXZENTERPLATTE CJ65V2/VA2/CJ110V CJ120V/	1		ORBITAL CAM
50	305-737	ZAHNRAD CJ65V2/VA2/CJ110V	1		GEAR
51	957-540	SCHEIBE (A) CJ65VA2/V2/CJ110V CJ120V/VA	1		WASHER (A)
52	305-734	WELLE CJ65VA/VA2/CJ110V	1		SPINDLE
53	305-772	SPANSCHUTZABDECKUNG CJ65V2/VA2	1		CHIP COVER
54	305-592	NADELROLLE D5X19 8 CR17Y/CJ65V2/ CJ65VA2	1		NEEDLE D5X19.8
55B	305-754	FUHRUNGSROLLE CJ65V2/VA2	1		GUIDE ROLLER
56	305-752	FEDER CJ65V2/VA2/CJ110V/CJ120V/VA	2		SPRING
57	873-095	O-RING (P16) DIV TYPEN	1		O-RING (P-16)
58	305-750	TAUCHKOLBEN CJ65V2/VA2	1	INCLUD.75	PLUNGER ASS'Y
59A	305-749	#NAME?	2		SEAL LOCK FLAT HD. SCREW M4X10
60	940-079	SICHERUNGSRING D8 DIV TYPEN	1		RETAINING RING FOR D8 SHAFT
61	963-351	SCHEIBE (B) CJ65VA2/V2/CJ110V CJ120V/VA	1		WASHER (B)
62	305-755	INBUSSCHRAUBE M5X12 MIT FLANSCH	1		HEX. SOCKET HD. BOLT (W/FLANGE) M5X12
63	305-739	STIFT CJ65V2/VA2/CJ110V/CJ120V/VA	1		ORBITAL PIN

		Neue A			
64	305-740	FILZDICHTUNG CJ65V2/VA2/CJ110V CJ120V/VA	1		FELT
65A	306-893	GRUNDPLATTE CJ65V2/VA2	1		BASE
66	305-761		1	TILL 1.1993	SPACER
66A	306-895	HALTER CJ65V2/VA2/110V	1	SINCE 2.1993	SPACER
67	305-760	BLATTFEDER CJ65V2/VA2/110	2		PLATE SPRING
68	305-759	GLEITPLATTE (METALL) CJ65V2/VA2	1		SUB BASE (A)
69A	309-175	#NAME?	4		NYLOCK FLAT HD. SCREW M5X10
70	963-371	HALTEPLATTE CJ65VA2/V2	1		BASE LOCKER
71A	317-488	INBUSSCHRAUBE M4X20 CJ65VA2/V2	1		HEX. SOCKET HD. M4X20
72	303-082	SCHALTER CJ65VA2	1		SWITCH
73	317-489	UNTERLEGSCHIEBE M4 CJ65VA2/V2	1		WASHER M4
74	940-928	SCHLUSSELHALTER DIV TYPEN	1	FOR NOR	WRENCH HOLDER
75	949-811	INBUSSCHRAUBE M4X 8 (10ST)	1		HEX. SOCKET HD. BOLT M4X8 (10 PCS.)
501A			1		BLADE NO.42
502A			1		BLADE NO.46
503A			1		BLADE NO.41
504	943-277	INBUSSCHLUSSEL D3(M4)	1		HEX. BAR WRENCH 3MM
505A	306-363	SPANREISSCHUTZ CJ65V2/VA2 (5ST)	1		TABLE INSERT (5 PCS.)
506	306-054	SPANEABSAUGADAPTER CJ65V2/VA2	1	FOR GBR,FRG	DUST COLLECTOR
507	305-955	PARALLELANSCHLAG CJ65V2/VA2	1	SINCE 10.1993 INCLUD.508 FOR FRA	GUIDE ASS'Y
508	307-767	Knopfschraube M5x10 CJ65VA2	1	SINCE 10.1993 FOR FRA	KNOB SCREW M5X10