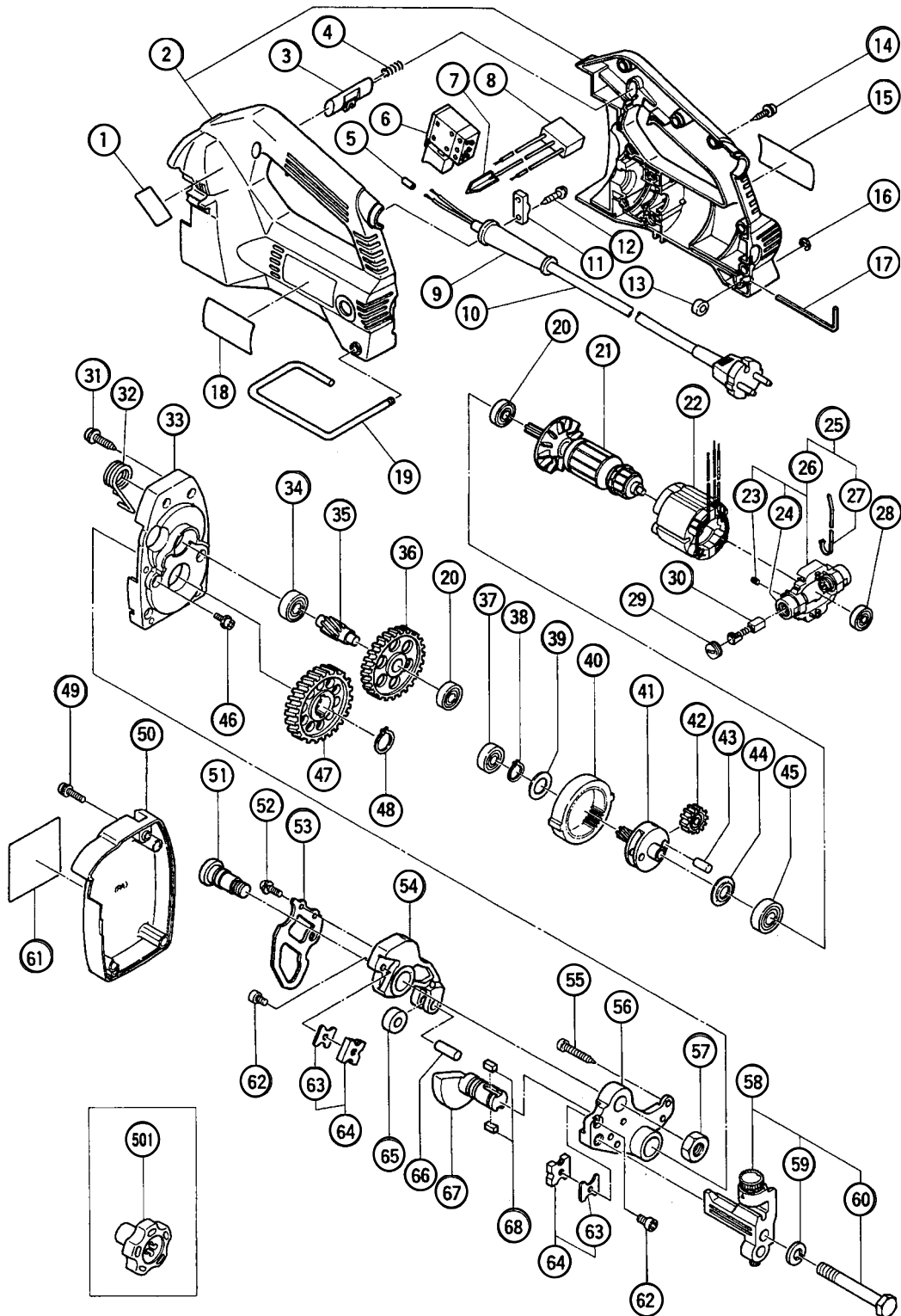


## ELECTRIC TOOL PARTS LIST

■ **STUD CUTTER**  
**Model CL 10SA**

2001 • 1 • 25

(E1)



## PARTS

CL 10SA

ITEM NO.	CODE NO.	DESCRIPTION	NO. USED	REMARKS
1		CAUTION PLATE (E)	1	
2	319-411	HOUSING (A).(B) SET	1	
3	319-402	PUSHING BUTTON (A)	1	
4	319-403	SPRING (A)	1	
5	981-373	TUBE (D)	2	FOR CORD
6	319-412	SWITCH	1	
7	992-635	EARTH TERMINAL	1	
8	994-273	NOISE SUPPRESSOR	1	
* 9	953-327	CORD ARMOR D8.8	1	
* 9	938-051	CORD ARMOR D10.1	1	
* 10	500-235Z	CORD	1	(CORD ARMOR D8.8)
* 10	500-391Z	CORD	1	(CORD ARMOR D10.1) FOR SUI
* 10	500-440Z	CORD	1	(CORD ARMOR D8.8) FOR GBR
11	937-631	CORD CLIP	1	
12	984-750	TAPPING SCREW (W/FLANGE) D4X16	2	
13	307-607	WRENCH HOLDER	1	
14	301-653	TAPPING SCREW (W/FLANGE) D4X20 (BLACK)	9	
15		NAME PLATE	1	
16	968-643	RETAINING RING (E-TYPE) FOR D4 SHAFT	1	
17	944-458	HEX. BAR WRENCH 4MM	1	
18		HITACHI LABEL	1	
19	319-401	HOOK	1	
20	608-VVM	BALL BEARING 608VVC2PS2L	2	
21	360-545E	ARMATURE 230V	1	
22	340-490E	STATOR 230V	1	
23	981-478	HEX. SOCKET SET SCREW M4X4	2	
24	957-571	BRUSH HOLDER	2	
25	319-408	BRUSH BLOCK ASS'Y	1	INCLUD.26,27
26	315-992	BRUSH BLOCK ASS'Y	1	INCLUD.23,24
27	313-505	WIRE BAND	2	
28	626-VVM	BALL BEARING 626VVC2PS2L	1	
29	931-266	BRUSH CAP	2	
30	999-021	CARBON BRUSH (1 PAIR)	2	
31	305-558	TAPPING SCREW (W/FLANGE) D5X25 (BLACK)	4	
32	307-624	RETURN SPRING	1	
33	307-622	GEAR COVER	1	
34	629-VVM	BALL BEARING 629VVC2PS2L	1	
35	319-407	THIRD PINION	1	
36	319-406	SECOND GEAR	1	
37	609-VVM	BALL BEARING 609VVC2PS2L	1	
38	939-544	RETAINING RING FOR D15 SHAFT (10 PCS.)	1	
39	302-714	WASHER	1	
40	310-254	RING GEAR	1	
41	319-405	SECOND PINION	1	
42	319-404	IDLE GEAR	2	
43	307-609	NEEDLE	2	
44	307-608	WASHER	1	
45	600-1VV	BALL BEARING 6001VVCMP2S2L	1	
46	998-471	HEX. SOCKET HD. BOLT M5X12	3	
47	319-393	FINAL GEAR	1	
48	939-546	RETAINING RING FOR D18 SHAFT (10 PCS.)	1	

\* ALTERNATIVE PARTS

1 - 01



