

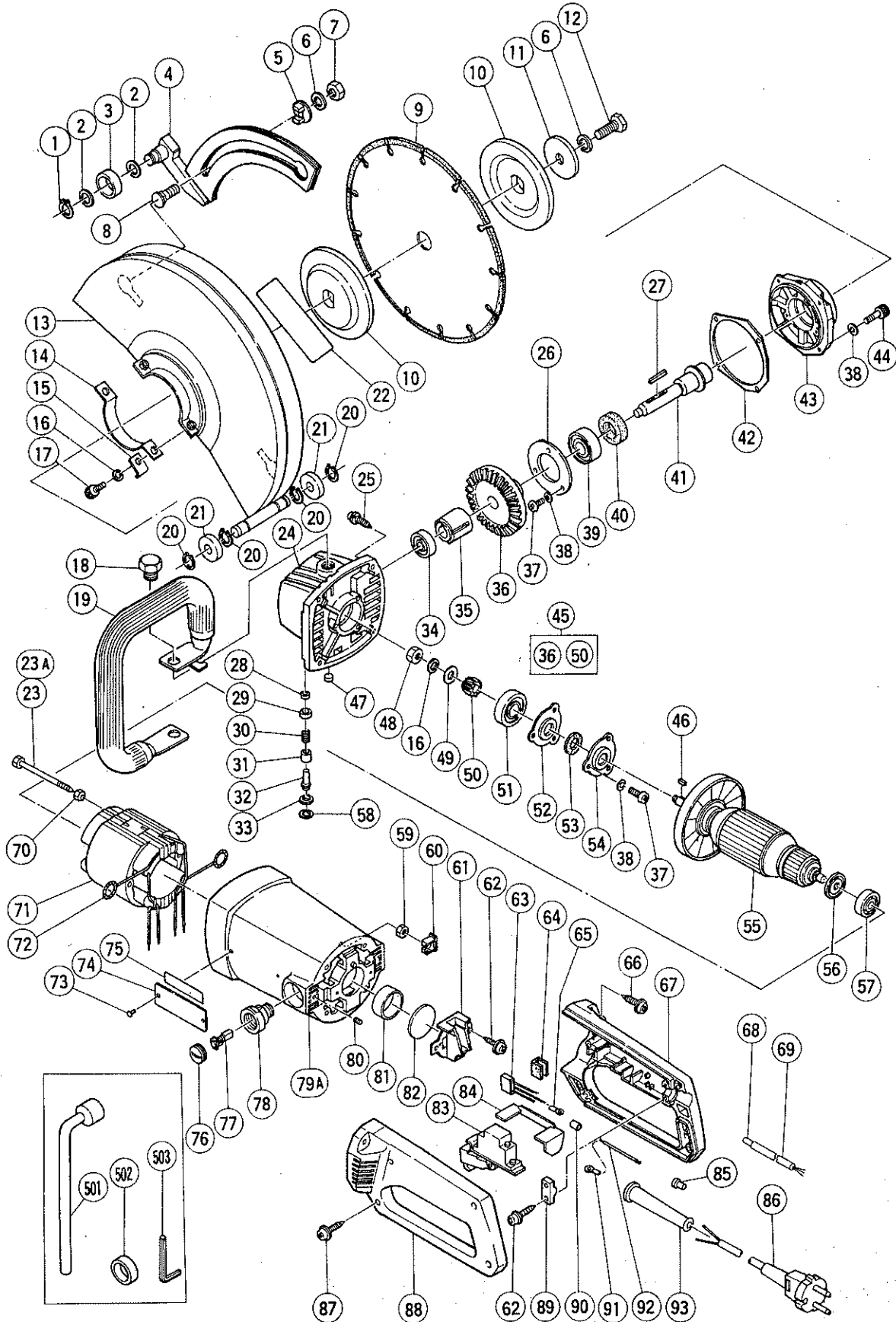
ELECTRIC TOOL PARTS LIST

■ CUTTER

1988·3·20

Model CM10

CM10(E2)



PARTS

CM10(E2)

Item No.	Code No.	Part Name	Q'ty	Remarks
1	939542	C-Type Retaining Ring	1	for D12 Shaft (10 pcs.)
2	944276	Washer (B)	1	
3	991823	Roller	1	
4	991822	Guide Plate Ass'y	1	includ. 1 ~ 3
5	991825	Guide Washer	1	
6	961157	Super Lock Washer	2	for M10
7	949560	Nut M10	1	(10 pcs.)
8	991831	Special Bolt M10	1	
9	991830	Diamond Wheel 255 mm	1	Segment Type
10	991828	Wheel Washer	2	
11	991824	Washer	1	
12	985019	Bolt M10	1	
13	991820	Wheel Guard Ass'y	1	includ. 20, 21
14	985599	Set Ring (A)	1	
15	991826	Set Ring Supporter	1	
16	949457	Spring Lock Washer	2	for M8 (10 pcs.)
17	949656	Hexagon Socket Hd. Bolt M8 x 20	2	(10 pcs.)
18	985597	Bolt M14	2	
19	985598	Pipe Handle	1	
20	939542	C-Type Retaining Ring	4	for D12 Shaft
21	991821	Roller	2	
22	985604	Label	1	
23	937925	Bolt M5 x 80	2	till 9. 1987
23A	961993	Hexagon Tapping Screw D5 x 80	2	since 10. 1087
24	938187	Gear Cover Ass'y	1	includ. 28 ~ 33, 47, 58
25	986011	Tapping Screw D5 x 30	4	w/Spring Lock Washer
26	937035	Bearing Cover (B)	1	
27	948920	Feather Key 4 x 4 x 30	1	
28	938599	Felt Packing (C)	1	
29	938598	Bushing	1	
30	938597	Spring	1	
31	938596	Ring	1	
32	938186	Lock Pin	1	
33	938595	Dust Seal	1	
34	939220	Ball Bearing (6200VVCN)	1	
35	938096	Sleeve	1	
36	985591	Gear	1	
37	949236	Machine Screw M5 x 10	6	(10 pcs.)
38	949454	Spring Lock Washer	10	for M5 (10 pcs.)
39	983363	Ball Bearing (6302DDCN)	1	
40	938099	Felt Packing (B)	1	
41	991827	Spindle	1	
42	937901	Seal Packing (B)	1	
43	937902	Packing Gland	1	
44	990079	Hexagon Socket Hd. Bolt M5 x 16	4	
45	985590	Gear Ass'y	1	includ. 36, 50
46	940533	Feather Key	1	
47	937033	Felt Washer	1	
48	946228	Lock Nut M8		
49	957042	Super Lock Washer	1	for M8
50	985592	Pinion	1	
51	939250	Ball Bearing (6301VVCN)	1	
52	937940	Distance Plate	1	

PARTS

CM10(E2)

Item No.	Code No.	Part Name	Q'ty	Remarks
53	936853	Felt Packing (A)	1	
54	937896	Bearing Cover (A)	1	
55	—	Armature	1	See alternative parts
56	955260	Dust Seal (A)	1	
57	939220	Ball Bearing (6200VVCM)	1	
58	948011	C-Type Retaining Ring	1	for I.D. 16 Hole
59	949555	Nut	M5	2 till 9. 1987 (10 pcs.)
60	937892	Nut Cover	2	till 9. 1987
61	937905	Bearing Cover	1	
62	930446	Tapping Screw	D4 x 16	5 w/Washer
63	—	Noise Suppressor	1	See alternative parts
64	—	Support (B)	1	See alternative parts
65	—	Terminal	1	See alternative parts
66	985943	Tapping Screw	D5 x 30	4 w/Washer
67	981005	Handle (A)	1	
68	—	Tube (D)	1	See alternative parts
69	—	Internal Wire Ass'y	1	See alternative parts
70	956764	Special Washer	2	till 9. 1987
71	—	Stator Ass'y	1	See alternative parts
72	958032	Brush Terminal	2	
73	949510	Rivet	D2.5 x 4.8	2 (10 pcs.)
74	—	Name Plate	1	
75	—	Caution Plate	1	See alternative parts
76	940540	Brush Cap	2	
77	999044	Carbon Brush	2	
78	980487	Brush Holder	2	
79A	992048	Housing Ass'y	1	includ. 23A, 78, 80, 81
80	961681	Hexagon Socket Hd. Set Screw	M4 x 5	2
81	937894	Bearing Bush	1	
82	937946	Bearing Seal	1	
83	981008	Switch	1	
84	981007	Switch Adapter	1	
85	—	Connector	1	See alternative parts
86	—	Cord	1	See alternative parts
87	956636	Tapping Screw	D4 x 25	4 w/Washer
88	981006	Handle (B)	1	
89	960266	Cord Clip	1	
90	—	Tube (D)	1	See alternative parts
91	—	Terminal	1	See alternative parts
92	—	Internal Wire Ass'y	1	See alternative parts
93	940778	Cord Armor	D10.7	1

ALTERNATIVE PARTS

Item No.	Code No.	Part Name	Q'ty	Remarks
55	985602J	Armature	110V	1
	985602E	Armature	220V ~ 230V	1
	985602G	Armature	220V ~ 240V	1 for U.K., France, Netherlands
63	500261Z	Noise Suppressor	1	for U.K., Italy, F.R. Germany, France, Netherlands
	960283Z	Noise Suppressor	1	for Switzerland

ALTERNATIVE PARTS

CM10(E2)

Item No.	Code No.	Part Name	Q'ty	Remarks	
64	930153	Support (B)	1	for U.K., Italy, F.R. Germany, France, Netherlands	
65	938108	Terminal	1	for U.K., Italy, F.R. Germany, France, Netherlands	
68	—	Tube (D)	2		
69	981002	Internal Wire Ass'y	2	includ. 68	
	991834	Internal Wire Ass'y	2	includ. 68 for U.K. (110V)	
71	991833C	Stator Ass'y	110V	1	includ. 72
	991833E	Stator Ass'y	220V ~ 230V	1	includ. 72
	991833F	Stator Ass'y	240V	1	includ. 72
75	937833Z	Caution Plate	1		
	981016Z	Caution Plate	1	for F.R. Germany, Switzerland	
	981017Z	Caution Plate	1	for France	
85	959141	Connector (50092)	1	(10 pcs.)	
86	500246Z	Cord	110V ~ 240V	1	for U.K.
	500247Z	Cord	220V	1	for Italy, F.R. Germany, France, Netherlands
	500248Z	Cord	220V	1	for Switzerland
	500223Z	Cord	230V	1	for Singapore
90	981373	Tube (D)	1~2	for Italy, F.R. Germany, France, Netherlands, Switzerland, Singapore	
91	—	Terminal	D5	1	for Switzerland
92	937633	Internal Wire Ass'y	1	for Switzerland	includ. 91

STANDARD ACCESSORIES

Item No.	Code No.	Part Name	Q'ty	Remarks
501	985051	Box Wrench	1	
502	991829	Collar	1	
503	872422	Hexagon Bar Wrench	6 mm	1

OPTIONAL ACCESSORIES

Item No.	Code No.	Part Name	Q'ty	Remarks	
601	985609	Metal Cutting Wheel	305 mm	1	(10 pcs.)
602	985611	Masonry Cutting Wheel	305 mm	1	(10 pcs.)
603	937915	Thrust Washer (B)	2		