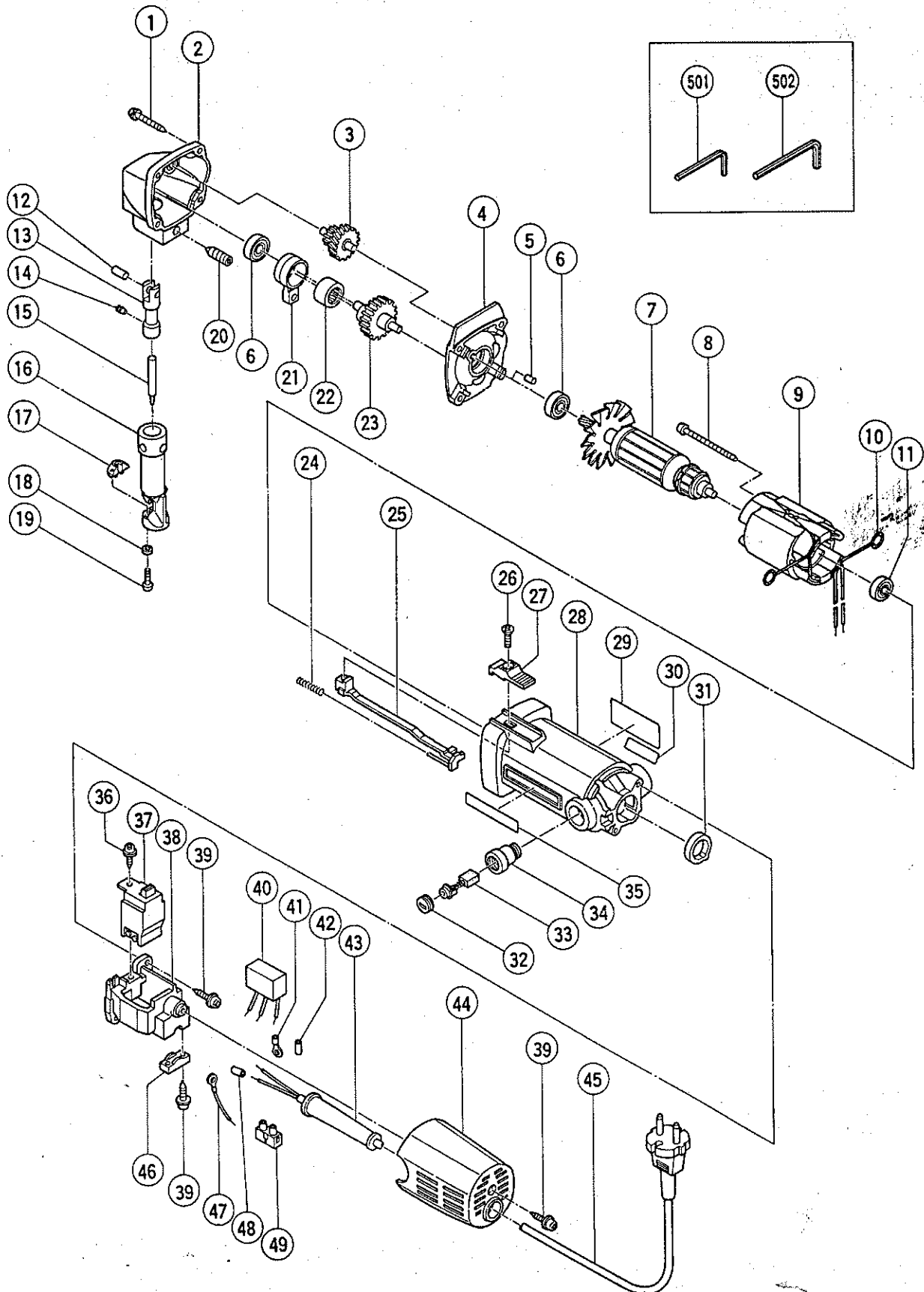


ELECTRIC TOOL PARTS LIST

1.6mm NIBBLER
Model CN16

1987-3-10
CN16(E1)



PARTS

CN16(E1)

| Item No. | Code No. | Part Name | Q'ty | Remarks | |
|----------|----------|-------------------------------------|------|-----------------------|-------|
| 1 | 986011 | Tapping Screw D5 x 30 | 4 | W/Spring Lock Washer | 0.28 |
| 2 | 998033 | Gear Cover | 1 | | 13.02 |
| 3 | 998036 | Second Pinion Gear | 1 | | 10.23 |
| 4 | 998032 | Inner Cover | 1 | | 13.02 |
| 5 | 931701 | Bearing Lock | 1 | | 0.28 |
| 6 | 939385 | Ball Bearing (608VVC2 PS2-L) | 2 | | 2.05 |
| 7 | — | Armature | 1 | See alternative parts | |
| 8 | 954642 | Tapping Screw D4 x 60 | 2 | | 0.28 |
| 9 | — | Stator Ass'y | 1 | See alternative parts | |
| 10 | 930630 | Brush Terminal | 2 | | 0.37 |
| 11 | 939496 | Ball Bearing (626VVC2 PS2-L) | 1 | | 2.05 |
| 12 | 993546 | Pin D6 | 1 | | 0.28 |
| 13 | 998034 | Piston | 1 | | 13.02 |
| 14 | 998037 | Hexagon Socket Hd. Set Screw M5 x 6 | 1 | | 0.28 |
| 15 | 998030 | Punch | 1 | | 3.72 |
| 16 | 998038 | Die Holder | 1 | | 48.36 |
| 17 | 998031 | Die 998039 | 1 | | 8.28 |
| 18 | 949451 | Spring Lock Washer | 2 | for M3 (10 pcs.) | 0.28 |
| 19 | 949206 | Machine Screw M3 x 14 | 2 | (10 pcs.) | 0.28 |
| 20 | 998008 | Hexagon Socket Hd. Screw M8 x 20 | 1 | | 0.28 |
| 21 | 998004 | Connecting Rod Ass'y | 1 | includ. 22 | 11.16 |
| 22 | 993163 | Needle Bearing (M152112) | 1 | | 1.95 |
| 23 | 998035 | Spindle | 1 | | 13.02 |
| 24 | 938299 | Spring | 1 | | 0.28 |
| 25 | 982033 | Slide Bar | 1 | | 1.30 |
| 26 | 949323 | Flat Hd. Screw M4 x 12 | 1 | (10 pcs.) | 0.28 |
| 27 | 938312 | Slide Switch Knob (B) | 1 | | 0.28 |
| 28 | 982020 | Housing Ass'y | 1 | includ. 34 | 10.23 |
| 29 | — | Name Plate | 1 | | |
| 30 | — | Label | 1 | See alternative parts | |
| 31 | 982023 | Bearing Bushing | 1 | | 0.74 |
| 32 | 937847 | Brush Cap | 2 | | 0.47 |
| 33 | 999021 | Carbon Brush | 2 | (2 pcs.) | 1.30 |
| 34 | 937846 | Brush Holder | 2 | | 0.93 |
| 35 | 957561 | HITACHI Label | 1 | | 0.28 |
| 36 | 982034 | Tapping Screw D4 x 12 | 1 | W/Washer | 0.28 |
| 37 | 980778 | Slide Switch | 1 | | 6.42 |
| 38 | — | Switch Holder | 1 | See alternative parts | |
| 39 | 984750 | Tapping Screw D4 x 16 | 5 | W/Flange | 0.28 |
| 40 | — | Noise Suppressor | 1 | See alternative parts | |
| 41 | — | Terminal | 1 | See alternative parts | |
| 42 | — | Tube (D) | 2 | See alternative parts | |
| 43 | — | Cord Armor | 1 | See alternative parts | |
| 44 | 982035 | Tail Cover | 1 | | 1.95 |
| 45 | — | Cord | 1 | See alternative parts | |
| 46 | 960266 | Cord Clip | 1 | | 0.28 |
| 47 | — | Internal Wire | 1 | See alternative parts | |
| 48 | — | Tube (D) | 2 | See alternative parts | |
| 49 | — | Pillar Terminal (B) | 1 | See alternative parts | |

ALTERNATIVE PARTS

CN16(E1)

| Item No. | Code No. | Part Name | Q'ty | Remarks | |
|----------|----------|--------------------------|------|---|----------|
| 7 | 360098C | Armature 110V ~ 115V | 1 | | |
| | 360098D | Armature 120V ~ 127V | 1 | | |
| | 360098E | Armature 220V ~ 230V | 1 | | 27.90 |
| | 360098F | Armature 240V | 1 | | |
| | 360098J | Armature 110V | 1 | for U.K. | |
| | 360098G | Armature 220V ~ 230V | 1 | for S. Africa, Italy, France, Netherlands, Denmark, Finland, Sweden, Austria, Norway | |
| | 360098H | Armature 240V | 1 | for U.K. | |
| 9 | 340127C | Stator Ass'y 110V ~ 115V | 1 | includ. 10 | |
| | 340127D | Stator Ass'y 120V ~ 127V | 1 | includ. 10 | |
| | 340127E | Stator Ass'y 220V ~ 230V | 1 | includ. 10 | 10.23 |
| | 340127F | Stator Ass'y 240V | 1 | includ. 10 | |
| | 340127J | Stator Ass'y 110V | 1 | for U.K. includ. 10 | |
| | 340127G | Stator Ass'y 220V ~ 230V | 1 | for S. Africa, Italy, France, Netherlands, Denmark, Sweden, Austria, Norway includ. 10 | Finland, |
| | 340127K | Stator Ass'y 220V ~ 230V | 1 | for N.Z., F.R. Germany, Switzerland includ. 10 | |
| | 340127H | Stator Ass'y 240V | 1 | for U.K. includ. 10 | |
| 30 | — | Label | 1 | for France | |
| 38 | 982044 | Switch Holder | 1 | | 1.67 |
| | 982045Z | Switch Holder | 1 | for Switzerland | |
| 40 | 991312 | Noise Suppressor | 1 | | 1.30 |
| | 971828 | Noise Suppressor | 1 | for Italy, Denmark | |
| | 982043Z | Noise Suppressor | 1 | for Switzerland | |
| 41 | 980063 | Terminal | 1 | | 0.28 |
| | 959144 | Terminal (50051) | 1 | for Switzerland (10 pcs.) | |
| 42 | 981373 | Tube (D) | 2 | for Noise Suppressor | 0.28 |
| 43 | 953327 | Cord Armor D8.8 | 1 | | 0.28 |
| | 938051 | Cord Armor D10.1 | 1 | | |
| 45 | 500201Z | Cord 110V ~ 240V | 1 | (Cord Armor D10.1) | |
| | 500409Z | Cord 110V ~ 220V | 1 | for Indonesia, Surinam, Finland (Cord Armor D8.8) | |
| | 500245Z | Cord 110V ~ 220V | 1 | for Syria (Cord Armor D10.1) | |
| | 971675Z | Cord 110V ~ 240V | 1 | for U.K., S. Africa (Cord Armor D8.8) | |
| | 500240Z | Cord 115V | 1 | for U.S.A., Canada (Cord Armor D8.8) | |
| | 500247Z | Cord 220V | 1 | for Italy, F.R. Germany, France, Netherlands, Denmark, Sweden, Austria, Norway (Cord Armor D10.1) | 14.88 |
| | 500248Z | Cord 220V | 1 | for Switzerland (Cord Armor D10.1) | |
| | 500226Z | Cord 230V | 1 | for N.Z. (Cord Armor D8.8) | |
| | 500223Z | Cord 230V ~ 240V | 1 | for Singapore, Kuwait (Cord Armor D10.1) | |
| | 971674Z | Cord 240V | 1 | for Papua New Guinea (Cord Armor D8.8) | |
| | 500405Z | Cord 240V | 1 | for Australia (Cord Armor D8.8) | |
| 47 | 982303 | Internal Wire | 1 | | 0.28 |
| 48 | 981373 | Tube (D) | 2 | for Cord | 0.28 |
| 49 | 982805Z | Pillar Terminal (B) | 1 | | 0.74 |

97.60

35.80

