

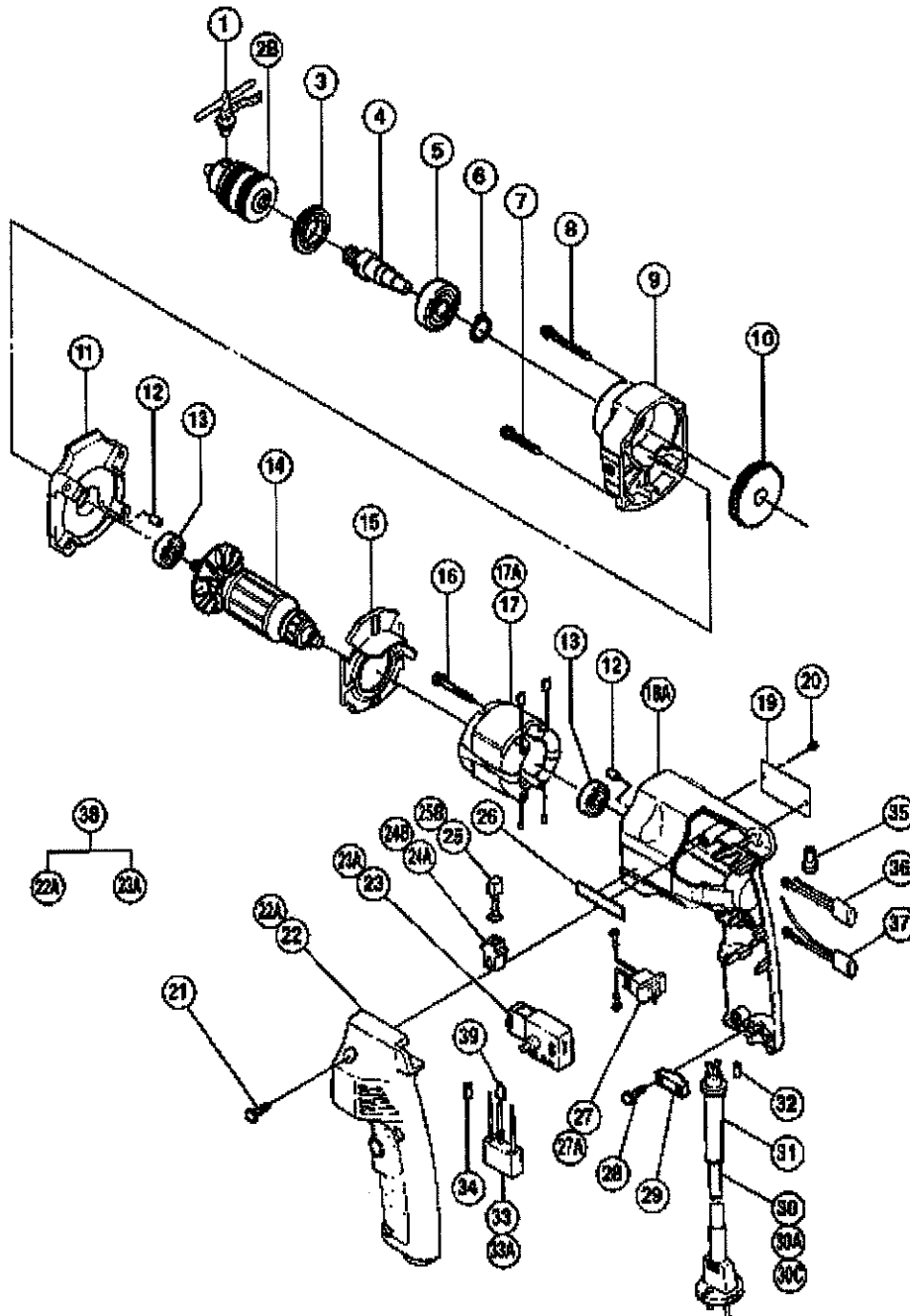
ELECTRIC TOOL PARTS LIST

■ DRILL

2004 · 12 · 1

Model D 10VC

(E6-3)



PARTS

D10VC

ITEM No.	CODE No.	DESCRIPTION	No. USED	REMARKS
1	980-057	CHUCK WRENCH 10TL2	1	
* 2B	323-250	DRILL CHUCK 10TLRK-N (W/O CHUCK WRENCH)	1	
* 2B	950-292	DRILL CHUCK 10TLRA	1	INCLUD.1
3	930-214	BEARING CAP	1	
4	991-883	SPINDLE	1	
5	600-2VV	BALL BEARING 6002VVCMP2L	1	
6	939-544	RETAINING RING FOR D15 SHAFT (10 PCS.)	1	
7	985-984	TAPPING SCREW (W/WASHER) D4X35	2	
8	986-112	TAPPING SCREW (W/WASHER) D4X50	2	
9	983-411	GEAR COVER	1	
10	986-111	GEAR	1	
11	991-882	INNER COVER	1	
12	931-701	BEARING LOCK	2	TILL 5.1985 FOR INNER COVER,TILL 4.1987
12	931-701	BEARING LOCK	0	FOR HOUSING
13	608-VVM	BALL BEARING 608VVC2PS2L	2	
* 14	991-887U	ARMATURE ASS'Y 115V	1	INCLUD.13 FOR USA,CAN,GBR
* 14	991-887E	ARMATURE 220V-230V	1	
* 14	991-887F	ARMATURE 240V	1	
15	950-504	FAN GUIDE	1	
16	992-630	TAPPING SCREW (W/SP. WASHER) D4X40	2	
* 17	991-886C	STATOR 110V-127V	1	FOR USA,CAN
* 17	991-886E	STATOR 220V-230V	1	
* 17	991-886F	STATOR 240V	1	
* 17	991-886H	STATOR 220V	1	FOR SUI
* 17	991-886J	STATOR 110V	1	FOR GBR
* 17A	991-886P	STATOR 110V	1	FOR TPE
* 18A	991-880	HOUSING	1	
* 18A	995-630	HOUSING	1	FOR SUI
19		NAME PLATE	1	
* 20	932-642	RIVET D2.5X2.8	2	FOR CAN
21	982-095	TAPPING SCREW (W/WASHER) D4X20	3	
* 22A	318-329	HANDLE COVER	1	
* 22A	318-338	HANDLE COVER	1	FOR SUI,FRA,HOL
* 23A	316-257	SWITCH 220V-240V (2P PILLAR TYPE) W/LOCK	1	SINCE 1.2000
* 23A	307-893	SWITCH 100V-127V (1P PILLAR TYPE) W/LOCK	1	SINCE 1.2000
* 23A	318-366	SWITCH 115V-120V (1P PILLAR TYPE) W/LOCK	1	FOR USA,CAN SINCE 1.2000
* 24A	930-483	BRUSH HOLDER	2	(TILL 7.1997 FOR GBR,FIN,TILL 11.2000
024A	930-483	BRUSH HOLDER	0	FOR TPE)

*ALTERNATIVE PARTS

-- 2--

PARTS

D10VC

ITEM No.	CODE No.	DESCRIPTION	No. USED	REMARKS
* 24B	955-203	BRUSH HOLDER	2	SINCE 3.1990 FOR ITA,FRG,BEL,FRA,HOL,
024B	955-203	BRUSH HOLDER	0	DEN,SWE,AUT,SUI (SINCE 8.1997 FOR GBR,
024B	955-203	BRUSH HOLDER	0	FIN,SINCE 12.2000 FOR TPE)
* 25	999-041	CARBON BRUSH (1 PAIR)	2	
* 25B	999-072	CARBON BRUSH (AUTO STOP TYPE) (1 PAIR)	2	FOR USA
26	950-565	HITACHI LABEL	1	
* 27	991-889	REVERSING SWITCH	1	FOR USA,CAN,AUS (TILL 11.2000 FOR TPE)
* 27	992-636	REVERSING SWITCH	1	FOR SAF (TILL 7.1997 FOR GBR)
* 27	995-350	REVERSING SWITCH	1	FOR NZL (TILL 7.1997 FOR FIN)
* 27A	991-894	REVERSING SWITCH	1	SINCE 3.1990 FOR ITA,FRG,BEL,FRA,HOL,
027A	991-894	REVERSING SWITCH	0	DEN,SWE,AUT,SUI (SINCE 8.1997 FOR GBR,
027A	991-894	REVERSING SWITCH	0	FIN,SINCE 12.2000 FOR TPE)
28	984-750	TAPPING SCREW (W/FLANGE) D4X16	2	
29	937-631	CORD CLIP	1	
* 30	500-240Z	CORD	1	(CORD ARMOR D8.2) FOR USA,CAN
* 30	500-439Z	CORD	1	(CORD ARMOR D8.2) FOR AUS,NZL
* 30	500-409Z	CORD	1	(CORD ARMOR D8.2) FOR FRG,ITA,FRA,HOL,
030	500-409Z	CORD	0	DEN,FIN,AUT,SWE,NOR
* 30	950-543Z	CORD	1	(CORD ARMOR D10.2)
* 30	971-517Z	CORD	1	(CORD ARMOR D8.2) FOR GBR (110V)
* 30A	500-436Z	CORD	1	(CORD ARMOR D8.2) FOR GBR (240V)
* 30A	500-423Z	CORD	1	(CORD ARMOR D8.2) FOR SIN
* 30A	500-447Z	CORD	1	(CORD ARMOR D8.2) FOR SYR,SUI
* 30C	500-435Z	CORD	1	(CORD ARMOR D8.2) FOR HKG
* 31	930-487	CORD ARMOR D8.2	1	
* 31	980-193	CORD ARMOR D10.2	1	
32	981-373	TUBE (D)	2	
* 33	994-273	NOISE SUPPRESSOR	1	
* 33A	320-669	NOISE SUPPRESSOR	1	FOR TPE
* 34	981-373	TUBE (D)	1	FOR NOISE SUPPRESSOR
* 35	959-140	CONNECTOR 50091 (10 PCS.)	2	FOR SUI
* 36	991-890	CHOKE COIL	1	FOR SUI
* 37	991-891	CHOKE COIL	1	FOR SUI
* 38	318-330	SWITCH AND HANDLE COVER SET 220V-240V	1	INCLUD.22A,23A TILL 12.1999
* 38	318-336	SWITCH AND HANDLE COVER SET 220V-240V	1	INCLUD.22A,23A FOR SUI,FRA,HOL
038	000-008D		0	TILL 12.1999
* 38	318-365	SWITCH AND HANDLE COVER SET 115V-120V	1	INCLUD.22A,23A FOR USA,CAN TILL 12.1999
* 38	318-331	SWITCH AND HANDLE COVER SET 110V-127V	1	INCLUD.22A,23A TILL 12.1999

*:ALTERNATIVE PARTS

-- 3--

PARTS

D10VC

ITEM No.	CODE No.	DESCRIPTION	No. USED	REMARKS
* 39	992-635	EARTH TERMINAL	1	FOR NOISE SUPPRESSOR

STANDARD ACCESSORIES

ITEM No.	CODE No.	DESCRIPTION	No. USED	REMARKS
601	982-593	HOOK	1	
602A	310-904	CASE	1	
604	981-828	SIDE HANDLE	1	
605	873-929	WRENCH 14MM	1	FOR REMOVAL OF THE DRILL CHUCK