

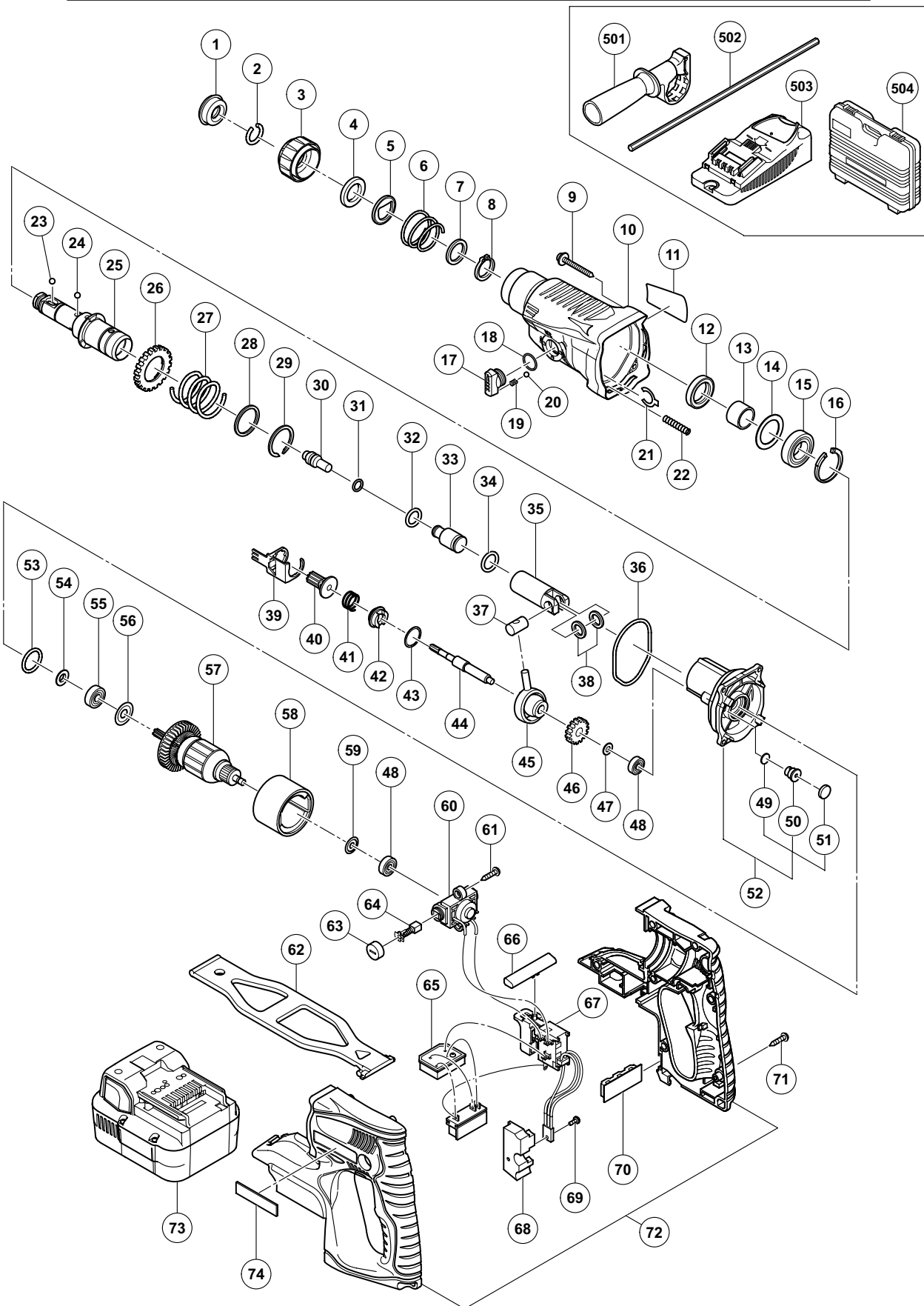
ELECTRIC TOOL PARTS LIST

CORDLESS ROTARY HAMMER

2010-2-10

Model DH 24DVC

(E1)



PARTS

DH 24DVC

ITEM NO.	CODE NO.	DESCRIPTION	NO. USED	REMARKS
1	306-345	FRONT CAP	1	
2	306-340	STOPPER RING	1	
3	325-597	GRIP	1	
4	324-528	BALL HOLDER	1	
5	324-526	HOLDER PLATE	1	
6	322-812	HOLDER SPRING	1	
7	984-118	WASHER (B)	1	
8	939-547	RETAINING RING FOR D20 SHAFT (10 PCS.)	1	
9	305-490	TAPPING SCREW (W/FLANGE) D4 X 30 (BLACK)	4	
10	331-520	GEAR COVER (A)	1	
11		NAME PLATE	1	
12	307-688	OIL SEAL	1	
13	331-301	SLEEVE	1	
14	323-232	FELT PACKING (B)	1	
15	690-4DD	BALL BEARING 6904DDPS2L	1	
16	322-813	RETAINING RING 37MM	1	
17	331-303	CHANGE LEVER	1	
18	319-567	O-RING (S-15)	1	
19	331-306	SPRING (H)	1	
20	959-155	STEEL BALL D3.97 (10 PCS.)	1	
21	331-305	RETAINING RING D15	1	
22	331-302	SPRING (C)	1	
23	959-156	STEEL BALL D7.0 (10 PCS.)	1	
24	959-154	STEEL BALL D5.556 (10 PCS.)	3	
25	331-307	CYLINDER	1	
26	331-309	SECOND GEAR	1	
27	331-310	SPRING (A)	1	
28	331-311	WASHER (A)	1	
29	320-846	RETAINING RING D28	1	
30	331-312	SECOND HAMMER	1	
31	301-672	O-RING (B)	1	
32	331-308	O-RING (A)	1	
33	331-296	STRIKER	1	
34	301-670	O-RING (A)	1	
35	331-300	PISTON	1	
36	327-870	O-RING (A)	1	
37	322-798	PISTON PIN	1	
38	322-799	WASHER (C)	2	
39	331-313	LOCK PLATE	1	
40	323-181	SECOND PINION	1	
41	323-182	CLUTCH SPRING	1	
42	331-314	CLUTCH	1	
43	331-315	WASHER	1	
44	331-297	SECOND SHAFT	1	
45	331-298	RECIPROCATING BEARING	1	
46	331-299	FIRST GEAR	1	
47	995-634	WASHER (B) D12.5	1	
48	626-VVM	BALL BEARING 626VVC2PS2L	2	
49	324-543	FELT PACKING (A)	1	
50	324-545	VALVE	1	

PARTS

DH 24DVC

ITEM NO.	CODE NO.	DESCRIPTION	NO. USED	REMARKS	
51	324-544	FELT PACKING (B)	1		
52	331-521	INNER COVER ASS'Y (A)	1	INCLUD. 49-51	
53	878-609	O-RING (S-24)	1		
54	306-312	FRINGER	1		
55	609-DDC	BALL BEARING 609DDC3PS2-L	1		
56	958-915	WASHER (A)	1		
57	360-895	ARMATURE ASS'Y DC 24V	1	INCLUD. 48, 54-56, 59	
58	332-670	MAGNET	1		
59	980-865	WASHER (A)	1		
60	328-486	BRUSH BLOCK	1		
61	305-812	TAPPING SCREW (W/FLANGE) D4 X 16 (BLACK)	2		
62	332-669	BATTERY BAND	1		
63	319-847	BRUSH CAP	2		
64	999-100	CARBON BRUSH (1 PAIR)	2		
65	332-667	CONTROLLER TERMINAL SET	1		
66	328-064	PUSHING BUTTON	1		
67	332-666	DC-SPEED CONTROL SWITCH	1		
68	319-812	HEAT SINK	1		
69	993-963	MACHINE SCREW (W/WASHERS) M3 X 12	1		
70	332-668	RUBBER CUSHION	1		
71	302-086	TAPPING SCREW (W/FLANGE) D4 X 20 (BLACK)	7		
72	332-665	HOUSING (A). (B) SET	1		
73	332-484	BATTERY BSH 2420 (EUROPE, AUS, NZL)	2		
74		HITACHI LABEL	1		

STANDARD ACCESSORIES

DH 24DVC

ITEM NO.	CODE NO.	DESCRIPTION	NO. USED	REMARKS
501	324-548	SIDE HANDLE	1	
502	303-709	DEPTH GAUGE	1	
503		CHARGER (MODEL UC 24SGH)	1	
504	332-671	CASE	1	

OPTIONAL ACCESSORIES

ITEM NO.	CODE NO.	DESCRIPTION	NO. USED	REMARKS
601	308-471	GREASE FOR HAMMER. HAMMER DRILL (70G)	1	
602	980-927	GREASE FOR HAMMER. HAMMER DRILL (500G)	1	
603	981-840	GREASE (A) FOR HAMMER. HAMMER DRILL (30G)	1	
604	321-814	DRILL CHUCK 13VLRB-D	1	INCLUD. 605
605	995-344	FLAT HD. SCREW (A) (LEFT HAND) M6 X 25	1	
606	971-511Z	+ DRIVER BIT (A) NO.2 25L	1	
607	971-512Z	+ DRIVER BIT (A) NO.3 25L	1	
608	981-122	SPECIAL SCREW M6 X 22	1	
609	971-794	ANCHOR SETTING ADAPTER A W1/4" (MANUAL)	1	
610	971-795	ANCHOR SETTING ADAPTER A W5/16" (MANUAL)	1	
611	971-796	ANCHOR SETTING ADAPTER A W3/8" (MANUAL)	1	
612	971-799	ANCHOR SETTING ADAPTER B W1/4" (MANUAL)	1	
613	971-800	ANCHOR SETTING ADAPTER B W5/16" (MANUAL)	1	
614	971-801	ANCHOR SETTING ADAPTER B W3/8" (MANUAL)	1	
615	302-976	ANCHOR SETTING ADAPTER A (SDS+) W1/4 X 260L	1	
616	302-975	ANCHOR SETTING ADAPTER A (SDS+) W5/16 X 260L	1	
617	303-621	ANCHOR SETTING ADAPTER A (SDS+) W3/8 X 160L	1	
618	302-974	ANCHOR SETTING ADAPTER A (SDS+) W3/8 X 260L	1	
619	302-979	ANCHOR SETTING ADAPTER B (SDS+) W1/4 X 260L	1	
620	302-978	ANCHOR SETTING ADAPTER B(SDS+) W5/16 X 260L	1	
621	303-622	ANCHOR SETTING ADAPTER B (SDS+) W3/8 X 160L	1	
622	302-977	ANCHOR SETTING ADAPTER B (SDS+) W3/8 X 260L	1	
623	316-657	COLD CHISEL	1	
624	316-659	GROOVING CHISEL	1	
625	303-046	BULL POINT (SDS+) 250MM (ROUND SHANK TYPE)	1	
626	316-656	SQUARE BULL POINT	1	
627	316-658	CUTTER	1	
628	944-477	COTTER	1	
629	303-334	CHUCK HANDLE	1	
630	930-515	CHUCK WRENCH 10G	1	

OPTIONAL ACCESSORIES

DH 24DVC

ITEM NO.	CODE NO.	DESCRIPTION	NO. USED	REMARKS
631	303-332	HAMMER DRILL CHUCK SET 13MM	1	INCLUD. 632, 633
632	303-334	CHUCK HANDLE	1	
633	303-335	RUBBER CAP	1	
634	321-813	DRILL CHUCK 13VLD-D	1	
635	320-859	SYRINGE (BLOW-OUT BULB TYPE)	1	
636	303-617	TAPER SHANK ADAPTER (SDS PLUS) NO.1	1	
637	303-618	TAPER SHANK ADAPTER (SDS PLUS) NO.2	1	
638	303-619	A-TAPER SHANK ADAPTER (SDS PLUS)	1	
639	303-620	B-TAPER SHANK ADAPTER (SDS PLUS)	1	
640	303-624	CHUCK ADAPTER (D) (SDS PLUS)	1	
641	303-623	CHUCK ADAPTER (G) (SDS PLUS)	1	
642	321-825	DRILL CHUCK AND ADAPTER SET	1	
643	306-369	DRILL BIT (SLENDER SHAFT) D3.4 X 90	1	
644	306-368	DRILL BIT (SLENDER SHAFT) D3.5 X 90	1	
645	306-370	ADAPTER FOR SLENDER SHAFT (SDS PLUS)	1	
646	944-460	TAPER SHANK DRILL BIT D11 X 100	1	
647	944-461	TAPER SHANK DRILL BIT D12.3 X 110	1	
648	993-038	TAPER SHANK DRILL BIT D12.7 X 110	1	
649	944-462	TAPER SHANK DRILL BIT D14.3 X 110	1	
650	944-500	TAPER SHANK DRILL BIT D14.5 X 110	1	
651	944-463	TAPER SHANK DRILL BIT D17.5 X 120	1	
652	944-464	TAPER SHANK DRILL BIT D21.5 X 140	1	
653	971-787	DUST CUP	1	
654	931-844	STOPPER	1	
655	306-885	DUST COLLECTOR (B) ASS'Y	1	INCLUD. 656, 657
656	306-910	SOCKET ADAPTER (B)	1	
657	986-802	DUST COLLECTOR ASS'Y	1	INCLUD. 658-664
658	986-803	DUST COVER	1	
659	986-804	SEAL COVER	1	
660	948-310	RETAINING RING FOR D30 SHAFT	1	
661	958-063	WASHER	1	
662	959-150	STEEL BALL D6.35 (10 PCS.)	19	
663	986-805	OUTER RACE	1	
664	986-806	SOCKET	1	

