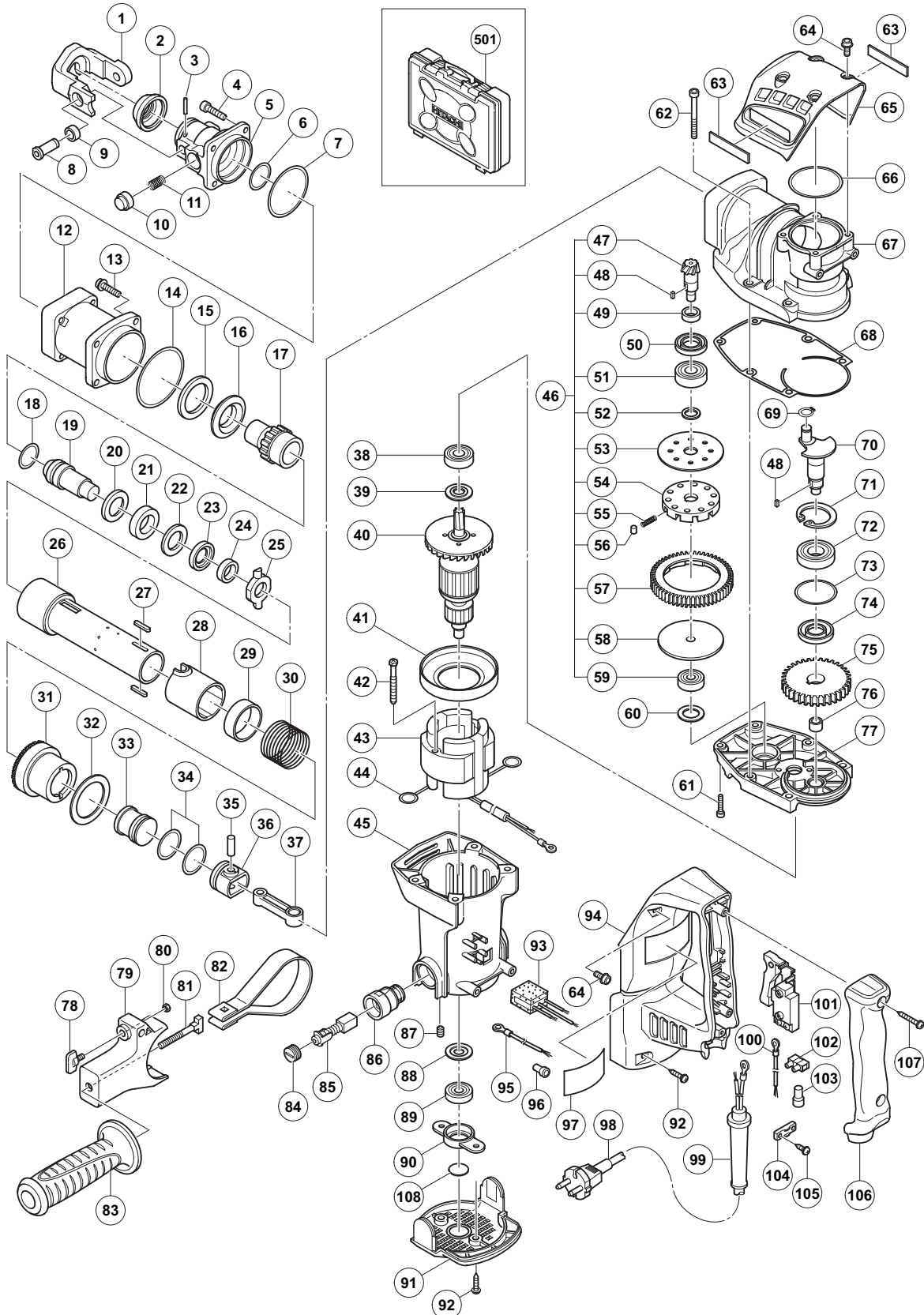


## ELECTRIC TOOL PARTS LIST

### ROTARY HAMMER Model DH 38SS

2009·5·26  
(E1)



## PARTS

DH 38SS

ITEM NO.	CODE NO.	DESCRIPTION	NO. USED	REMARKS
1	331-241	RETAINER	1	
2	331-243	DUST COVER	1	
3	991-697	ROLL PIN D4 X 20	2	
4	981-942	SEAL LOCK HEX. SOCKET HD. BOLT M6 X 25	4	
5	331-238	FRONT COVER	1	
6	319-572	O-RING (S-25)	1	
7	331-244	O-RING	1	
8	331-242	RETAINER PIN	2	
9	990-134	DAMPER (B)	2	
10	331-240	PUSHING BUTTON	1	
11	331-239	SET SPRING	1	
12	331-237	CYLINDER CASE	1	
13	991-712	HEX. SOCKET HD. BOLT (W/FLANGE) M6 X 25	4	
14	956-996	O-RING (1AS-60)	1	
15	321-843	DAMPER (B)	1	
16	331-236	DRIVER HOLDER	1	
17	331-222	DRIVER	1	
18	313-396	O-RING (C)	1	
19	331-223	SECOND HAMMER	1	
20	331-224	DAMPER WASHER	1	
21	321-835	DAMPER	1	
22	331-225	DAMPER HOLDER	1	
23	331-227	DAMPER HOLDER (B)	1	
24	321-832	DAMPER (C)	1	
25	331-228	SLIDE RING	1	
26	331-226	CYLINDER	1	
27	331-232	CYLINDER KEY	2	
28	331-230	SLIDE SLEEVE (B)	1	
29	331-229	SLIDE SLEEVE (A)	1	
30	331-231	SPRING (A)	1	
31	331-233	BEVEL GEAR	1	
32	331-234	THRUST WASHER	1	
33	331-235	STRIKER	1	
34	986-104	O-RING	2	
35	331-221	PISTON PIN	1	
36	326-369	PISTON	1	
37	321-285	CONNECTING ROD	1	
38	620-1DD	BALL BEARING 6201DDCMPS2L	1	
39	325-003	DUST WASHER (B)	1	
* 40	360-875C	ARMATURE 110V	1	
* 40	360-875E	ARMATURE 220V-230V	1	
* 40	360-875F	ARMATURE 240V	1	
41	331-252	FAN GUIDE	1	
42	953-174	HEX. HD. TAPPING SCREW D5 X 55	2	
* 43	340-753C	STATOR ASS'Y 110V	1	INCLUD. 44
* 43	340-753G	STATOR ASS'Y 110V	1	INCLUD. 44 FOR VEN
* 43	340-753E	STATOR ASS'Y 220V-230V	1	INCLUD. 44
* 43	340-753H	STATOR ASS'Y 220V-230V	1	INCLUD. 44 FOR THA, INA, SIN, HKG
* 43	340-753J	STATOR ASS'Y 240V	1	INCLUD. 44
44	930-703	BRUSH TERMINAL	2	

**PARTS**

DH 38SS

ITEM NO.	CODE NO.	DESCRIPTION	NO. USED	REMARKS
45	331-251	HOUSING ASS'Y	1	INCLUD. 86, 87
46	331-210	SLIP CLUTCH ASS'Y	1	INCLUD. 47-49, 51-59
47	331-211	BEVEL PINION	1	
48	944-109	FEATHER KEY 3 X 3 X 8	2	
49	331-212	COLLAR	1	
50	313-050	OIL SEAL (A)	1	
51	600-2DD	BALL BEARING 6002DDCMPS2L	1	
52	331-213	WASHER	1	
53	331-214	WASHER (A)	1	
54	321-281	GEAR HOLDER	1	
55	331-218	SPRING (C)	10	
56	331-217	NEEDLE	10	
57	331-215	SECOND GEAR	1	
58	331-219	SPACER	1	
59	629-VVM	BALL BEARING 629VVC2PS2L	1	
60	331-220	BEARING WASHER (C)	1	
61	992-803	SEAL LOCK HEX. SOCKET HD. BOLT M6 X 20	2	
62	986-940	SEAL LOCK HEX. SOCKET HD. BOLT M6 X 45	4	
63		HITACHI LABEL	2	
64	994-192	HEX. SOCKET HD. BOLT (W/FLANGE) M5 X 16	6	
65	331-245	CRANK COVER	1	
66	878-713	CYLINDER O-RING (B)	1	
67	331-207	CRANK CASE	1	
68	331-549	SEAL PACKING	1	
69	939-540	RETAINING RING FOR D10 SHAFT (10 PCS.)	1	
70	331-208	CRANK SHAFT	1	
71	948-391	RETAINING RING FOR D40 HOLE	1	
72	620-3DD	BALL BEARING 6203DDCMPS2L	1	
73	996-363	O-RING (S-40)	1	
74	321-274	OIL SEAL (B)	1	
75	331-209	FIRST GEAR	1	
76	939-299	NEEDLE BEARING (M661)	1	
77	331-253	GEAR COVER	1	
78	307-947	WING BOLT M6 X 12	1	
79	331-248	MOUNT	1	
80	949-556	NUT M6 (10 PCS.)	1	
81	331-247	HANDLE BOLT	1	
82	331-246	BAND	1	
83	330-209	SIDE HANDLE	1	
84	945-161	BRUSH CAP	2	
85	999-043	CARBON BRUSH (1 PAIR)	2	
86	958-900	BRUSH HOLDER	2	
87	938-477	HEX. SOCKET SET SCREW M5 X 8	2	
88	982-631	WASHER (A)	1	
89	608-VVM	BALL BEARING 608VVC2PS2L	1	
90	331-254	BEARING HOLDER	1	
91	331-202	TAIL COVER	1	
92	302-089	TAPPING SCREW (W/FLANGE) D5 X 20 (BLACK)	4	
* 93	331-203	NOISE SUPPRESSOR	1	EXCEPT FOR VEN, THA, INA, SIN, HKG, KUW
94	331-204	HANDLE	1	

