

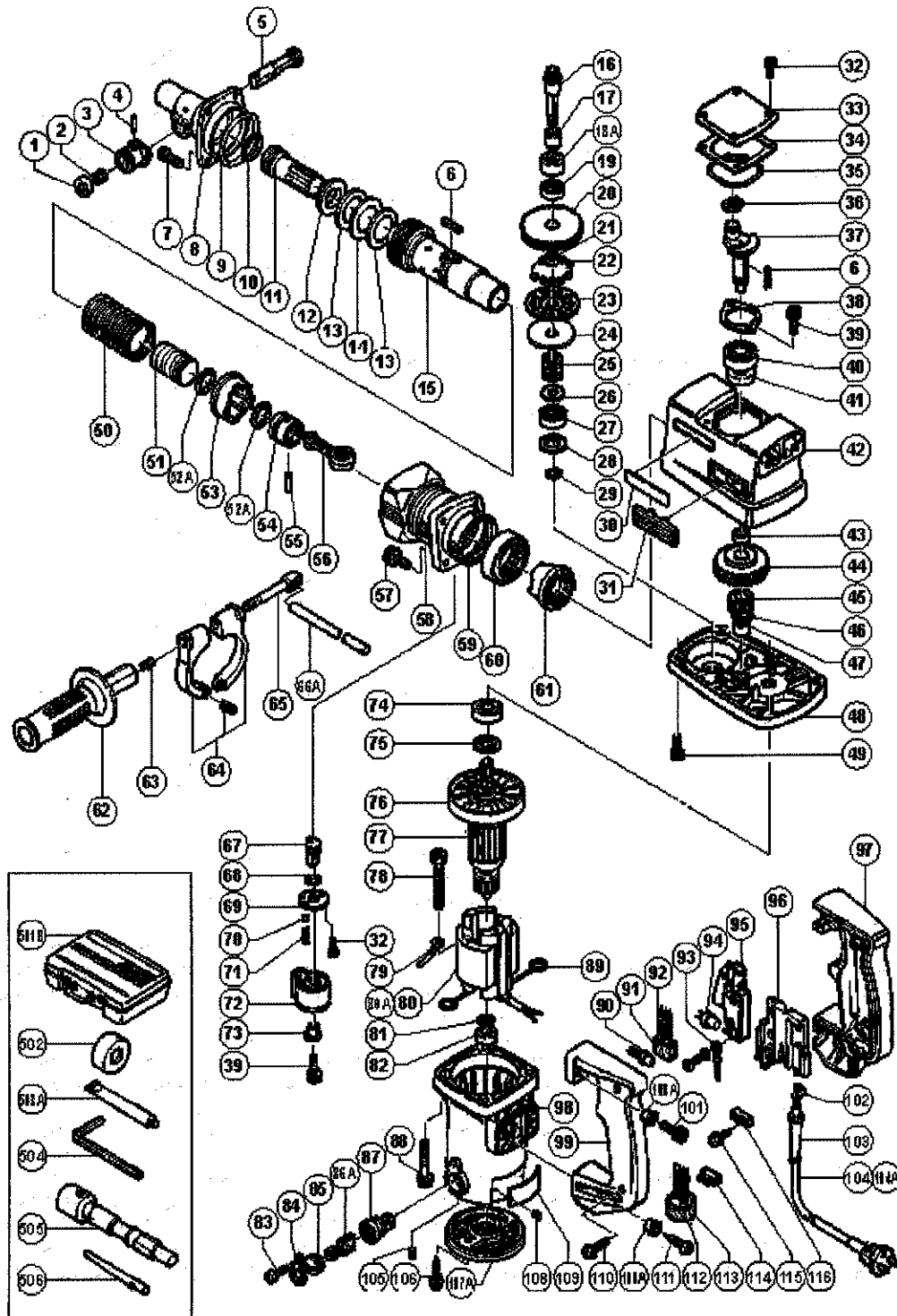
ELECTRIC TOOL PARTS LIST

HAMMER DRILL

2005 • 6 • 1

Model DH 38YB1

(E4-1)



PARTS

DH38YB1

ITEM No.	CODE No.	DESCRIPTION	No. USED	REMARKS
1	986-824	STOP WASHER	1	
2	981-937	STOPPER SPRING	1	
3	983-241	KNOB (A)	1	
4	943-364	NEEDLE ROLLER D4X20	1	
5	983-240	STOP LEVER	1	
6	971-750	FEATHER KEY 3X3X20	3	
7	993-040	NYLOCK HIGH TENSION BOLT M7X25	4	
8	300-040	FRONT COVER	1	
9	985-780	O-RING (E)	1	
10	981-857	O-RING (C)	1	
11	300-010	SECOND HAMMER	1	
12	981-862	DAMPER WASHER	1	
13	992-799	DAMPER	2	
14	992-798	WASHER	1	
15	300-009	CYLINDER	1	
16	992-796	THIRD PINION	1	
17	981-850	SLEEVE	1	
18A	981-852	NEEDLE BEARING (A) HK2012	1	
19	981-851	OIL SEAL (B)	1	
20	992-795	SECOND GEAR	1	
21	992-806	METAL	1	
22	959-150	STEEL BALL D6.35 (10 PCS.)	12	
23	992-792	HOLDER	1	
24	992-793	PLATE	1	
25	992-794	SPRING	1	
26	992-791	WASHER	1	
27	629-VVM	BALL BEARING 629VVC2PS2L	1	
28	944-525	BEARING WASHER (C)	1	
29	992-805	RETAINING RING FOR D9 SHAFT	1	
30	957-561	HITACHI LABEL	1	
31	991-713	WIND GUIDE (B)	2	
32	983-162	SEAL LOCK HEX. SOCKET HD. BOLT M4X12	6	
33	991-716	CRANK COVER	1	
34	980-749	SEAL PACKING	1	
35	980-744	O-RING (S-55)	1	
36	939-542	RETAINING RING FOR D12 SHAFT (10 PCS.)	1	
37	300-006	CRANK SHAFT	1	
38	981-847	BEARING COVER	1	

*ALTERNATIVE PARTS

- 2 -

PARTS

DH38YB1

ITEM No.	CODE No.	DESCRIPTION	No. USED	REMARKS
39	984-509	SEAL LOCK HEX. SOCKET HD. BOLT M5X14	3	
40	620-3DD	BALL BEARING 6203DDCMPS2L	1	
41	971-745	OIL SEAL (A)	1	
42	991-768	CRANK CASE ASS'Y	1	
43	980-706	COLLAR	1	
44	300-007	FIRST GEAR	1	
45	300-008	SECOND PINION	1	
46	967-261	RETAINING RING FOR D17 SHAFT	1	
47	939-299	NEEDLE BEARING (M661)	1	
48	991-953	GEAR COVER	1	
49	992-803	SEAL LOCK HEX. SOCKET HD. BOLT M6X20	2	
50	981-957	SPRING (A)	1	
51	300-039	STRIKER	1	
52A	310-420	O-RING	2	
53	981-956	CLUTCH	1	
54	981-885	PISTON	1	
55	980-708	PISTON PIN	1	
56	980-707	CONNECTING ROD ASS'Y	1	
57	991-712	HEX. SOCKET HD. BOLT (W/FLANGE) M6X25	4	
58	300-011	CYLINDER CASE	1	
59	956-996	O-RING (1AS-60)	1	
60	993-069	NEEDLE BEARING (B) (NTN HMK4520)	1	
61	981-954	THIRD GEAR	1	
62	981-870	SIDE HANDLE	1	
63	672-612	SPRING	1	
64	981-960	HANDLE HOLDER	1	
65	971-785	HANDLE BOLT	1	
66A	971-786	STOPPER ROD	1	
67	981-964	LEVER SHAFT	1	
68	981-967	O-RING (A)	1	
69	981-965	SHAFT COVER	1	
70	959-155	STEEL BALL D3.97 (10 PCS.)	1	
71	981-966	SPRING (B)	1	
72	981-963	LEVER	1	
73	991-711	DISTANCE PIECE (B)	1	
74	620-2VV	BALL BEARING 6202VVCMP2L	1	
75	980-700	DUST WASHER (B)	1	
76	980-740	FAN	1	

*:ALTERNATIVE PARTS

-- 3 --

PARTS

DH38YB1

ITEM No.	CODE No.	DESCRIPTION	No. USED	REMARKS
* 77	360-122C	ARMATURE ASS'Y 110V-115V	1	INCLUD.76
* 77	360-122E	ARMATURE ASS'Y 220V-230V	1	INCLUD.76
* 77	360-122F	ARMATURE ASS'Y 240V	1	INCLUD.76
78	960-251	HEX. HD. TAPPING SCREW D5X65	2	
* 79	986-277	INTERNAL WIRE	1	FOR NZL,GBR,ITA,FRG,FRA,HOL,DEN,FIN,SWE,
079	986-277	INTERNAL WIRE	0	AUT,NOR,SUI,SPA,BEL
* 80	981-970C	STATOR ASS'Y 110V-115V	1	INCLUD.89
* 80	981-970E	STATOR ASS'Y 220V-230V	1	INCLUD.89
* 80	981-970K	STATOR ASS'Y 220V-230V	1	INCLUD.89 FOR NZL,ITA,FRA,HOL,DEN,SWE,
080	981-970K	STATOR ASS'Y 220V-230V	0	AUT,NOR,SUI
* 80	981-970L	STATOR ASS'Y 240V	1	INCLUD.89 FOR AUS
* 80	981-970F	STATOR ASS'Y 240V	1	INCLUD.89 FOR GBR
* 80	981-970J	STATOR ASS'Y 110V	1	INCLUD.89 FOR GBR
* 80A	340-220F	STATOR ASS'Y 230V-240V	1	INCLUD.89 FOR FRG,FIN,BEL,SPA
81	980-698	DUST WASHER (A)	1	
82	608-VVM	BALL BEARING 608VVC2PS2L	1	
83	958-715	TAPPING SCREW D4X10	2	
84	981-959	CAP COVER	2	
85	961-781	BRUSH CAP	2	
86A	999-073	CARBON BRUSH (AUTO STOP TYPE) (1 PAIR)	2	
87	981-586	BRUSH HOLDER	2	
88	982-411	HEX. SOCKET HD. BOLT (W/FLANGE) M6X50	4	
89	930-703	BRUSH TERMINAL	2	
* 90	959-140	CONNECTOR 50091 (10 PCS.)	2	
* 91	963-243	SUPPORT	1	FOR NOISE SUPPRESSOR
* 91	930-153	SUPPORT (B)	1	FOR NOISE SUPPRESSOR, FOR SUI
* 92	994-273	NOISE SUPPRESSOR	1	
* 93	981-974	INTERNAL WIRE	1	FOR GBR,ITA,FRG,FRA,HOL,DEN,FIN,SWE,AUT,
093	981-974	INTERNAL WIRE	0	NOR,SUI,BEL,SPA
* 94	959-141	CONNECTOR 50092 (10 PCS.)	2	FOR NZL,GBR,ITA,FRG,FRA,HOL,DEN,FIN,SWE,
094	959-141	CONNECTOR 50092 (10 PCS.)	0	AUT,NOR,ECU,BEL,SPA
95	990-941	SWITCH (B) (1P SCREW TYPE) W/O LOCK	1	
96	990-082	SUPPORT (E)	1	
97	992-808	HANDLE (A)	1	
98	992-790	HOUSING ASS'Y	1	INCLUD.87,105
99	992-809	HANDLE (B)	1	
100A	990-940	DISTANCE PIECE (C)	4	
101	987-707	SEAL LOCK HEX. SOCKET HD. BOLT M6X25	2	

*ALTERNATIVE PARTS

STANDARD ACCESSORIES

DH38YB1

ITEM No.	CODE No.	DESCRIPTION	No. USED	REMARKS
641	985-752	TAPER SHANK ADAPTER NO.1	1	INCLUD.643
642	985-753	TAPER SHANK ADAPTER NO.2	1	INCLUD.643
643	944-477	COTTER	1	
644	985-754	A-TAPER SHANK ADAPTER (D11.0-17.5)	1	
645	985-755	B-TAPER SHANK ADAPTER (D21.5)	1	
646	992-813	K-TAPER SHANK ADAPTER	1	
647	985-750	DRILL ADAPTER NO.1 (D11.0-17.5)	1	
648	985-751	DRILL ADAPTER NO.2 (D21.5)	1	
649	955-994	CORE BIT 25MM	1	
650	955-995	CORE BIT 29MM	1	
651	955-996	CORE BIT 32MM	1	INCLUD.652
652	955-997	GUIDE PLATE (FOR CORE BIT 32MM)	1	
653	955-998	CORE BIT 35MM	1	INCLUD.654
654	955-999	GUIDE PLATE (FOR CORE BIT 35MM)	1	
655	956-000	CORE BIT 38MM	1	INCLUD.656
656	956-001	GUIDE PLATE (FOR CORE BIT 38MM)	1	
657	955-154	CORE BIT 45MM	1	INCLUD.658
658	955-166	GUIDE PLATE (FOR CORE BIT 45MM)	1	
659	955-155	CORE BIT 54MM	1	INCLUD.660
660	955-167	GUIDE PLATE (FOR CORE BIT 54MM)	1	
661	956-002	CORE BIT 64MM	1	INCLUD.662
662	956-003	GUIDE PLATE (FOR CORE BIT 64MM)	1	
663	955-157	CORE BIT 79MM	1	INCLUD.664
664	955-168	GUIDE PLATE (FOR CORE BIT 79MM)	1	
665	956-004	CORE BIT 94MM	1	INCLUD.666
666	956-005	GUIDE PLATE (FOR CORE BIT 94MM)	1	
667	955-159	CORE BIT 105MM	1	INCLUD.668
668	955-169	GUIDE PLATE (FOR CORE BIT 105MM)	1	
669	956-008	CORE BIT SHANK (B) 300L (FOR D25-35)	1	ROUND SHAFT TYPE
670	955-163	CORE BIT SHANK (A) 300L (FOR D38-120)	1	
671	956-009	CENTER PIN (B) 147L FOR CORE BIT D32-35	1	
672	955-165	CENTER PIN (A) 133L FOR CORE BIT D38-150	1	
673	992-814	CORE BIT 65MM	1	
674	992-815	CORE BIT 80MM	1	
675	992-816	CORE BIT 90MM	1	
676	992-817	CORE BIT 100MM	1	
677	992-818	CORE BIT 105MM	1	
678	992-819	CORE BIT SHANK (C)	1	

*ALTERNATIVE PARTS

-7-

STANDARD ACCESSORIES

DH38YB1

ITEM No.	CODE No.	DESCRIPTION	No. USED	REMARKS
603	985-722	DRILL BIT D16.0X505 (HEX. SHANK TYPE)	1	
604	991-330	DRILL BIT D16.0X550 (HEX. SHANK TYPE)	1	
605	991-331	DRILL BIT D18.0X550 (HEX. SHANK TYPE)	1	
606	985-724	DRILL BIT D19.0X280 (HEX. SHANK TYPE)	1	
607	985-723	DRILL BIT D19.0X400 (HEX. SHANK TYPE)	1	
608	985-725	DRILL BIT D19.0X505 (HEX. SHANK TYPE)	1	
609	991-332	DRILL BIT D19.0X550 (HEX. SHANK TYPE)	1	
610	991-334	DRILL BIT D20.0X505 (HEX. SHANK TYPE)	1	
611	991-333	DRILL BIT D20.0X550 (HEX. SHANK TYPE)	1	
612	985-727	DRILL BIT D22.0X280 (HEX. SHANK TYPE)	1	
613	985-726	DRILL BIT D22.0X400 (HEX. SHANK TYPE)	1	
614	985-728	DRILL BIT D22.0X505 (HEX. SHANK TYPE)	1	
615	991-335	DRILL BIT D22.0X550 (HEX. SHANK TYPE)	1	
616	985-730	DRILL BIT D25.0X280 (HEX. SHANK TYPE)	1	
617	985-729	DRILL BIT D25.0X400 (HEX. SHANK TYPE)	1	
618	985-731	DRILL BIT D25.0X505 (HEX. SHANK TYPE)	1	
619	991-336	DRILL BIT D25.0X550 (HEX. SHANK TYPE)	1	
620	985-733	DRILL BIT D28.0X280 (HEX. SHANK TYPE)	1	
621	985-732	DRILL BIT D28.0X400 (HEX. SHANK TYPE)	1	
622	985-734	DRILL BIT D28.0X505 (HEX. SHANK TYPE)	1	
623	991-337	DRILL BIT D28.0X550 (HEX. SHANK TYPE)	1	
624	991-338	DRILL BIT D30.0X550 (HEX. SHANK TYPE)	1	
625	985-736	DRILL BIT D32.0X280 (HEX. SHANK TYPE)	1	
626	985-735	DRILL BIT D32.0X400 (HEX. SHANK TYPE)	1	
627	985-737	DRILL BIT D32.0X505 (HEX. SHANK TYPE)	1	
628	991-339	DRILL BIT D32.0X550 (HEX. SHANK TYPE)	1	
629	991-340	DRILL BIT D35.0X550 (HEX. SHANK TYPE)	1	
630	985-739	DRILL BIT D38.0X280 (HEX. SHANK TYPE)	1	
631	985-738	DRILL BIT D38.0X400 (HEX. SHANK TYPE)	1	
632	985-740	DRILL BIT D38.0X505 (HEX. SHANK TYPE)	1	
633	991-341	DRILL BIT D38.0X550 (HEX. SHANK TYPE)	1	
634	944-460	TAPER SHANK DRILL BIT D11X100	1	
635	944-461	TAPER SHANK DRILL BIT D12.3X110	1	
636	993-038	TAPER SHANK DRILL BIT D12.7X110	1	
637	944-462	TAPER SHANK DRILL BIT D14.3X110	1	
638	944-500	TAPER SHANK DRILL BIT D14.5X110	1	
639	944-463	TAPER SHANK DRILL BIT D17.5X120	1	
640	944-464	TAPER SHANK DRILL BIT D21.5X140	1	

*:ALTERNATIVE PARTS

STANDARD ACCESSORIES

DH38YB1

ITEM No.	CODE No.	DESCRIPTION	No. USED	REMARKS
679	903-901	CENTER PIN (C)	1	
680	985-756	ANCHOR ADAPTER NO.20 W1/4"(FOR ROTATION)	1	
681	985-757	ANCHOR ADAPTER NO.25 W5/16"(FOR ROTATION)	1	
682	985-758	ANCHOR ADAPTER NO.30 W3/8"(FOR ROTATION)	1	
683	985-759	ANCHOR ADAPTER NO.40 W1/2"(FOR ROTATION)	1	
684	985-760	ANCHOR ADAPTER NO.50 W5/8"(FOR ROTATION)	1	
685	985-761	RATIO SHANK ADAPTER	1	
689	944-574	DRIFT KEY	1	
690A	318-085	SYRINGE (BELLOWS TYPE)	1	
691	980-927	GREASE FOR HAMMER.HAMMER DRILL (500G)	1	
692	981-922	BULL POINT 280MM (ROUND SHANK TYPE)	1	
693	981-923	BULL POINT 450MM (ROUND SHANK TYPE)	1	
694	981-925	COLD CHISEL 280MM (ROUND SHANK TYPE)	1	
695	981-926	COLD CHISEL 450MM (ROUND SHANK TYPE)	1	
696	981-924	CUTTER W45X280L (ROUND SHANK TYPE)	1	
697A	993-905	SERVICE KIT (DH 38YB ETC.)	1	INCLUD.5,7,9,10,12,13,34-36,52A,59,86.
697A	993-905	SERVICE KIT (DH 38YB ETC.)	0	503A
698	308-471	GREASE FOR HAMMER.HAMMER DRILL (70G)	1	
699	320-859	SYRINGE (BLOW-OUT BULB TYPE)	1	

*:ALTERNATIVE PARTS