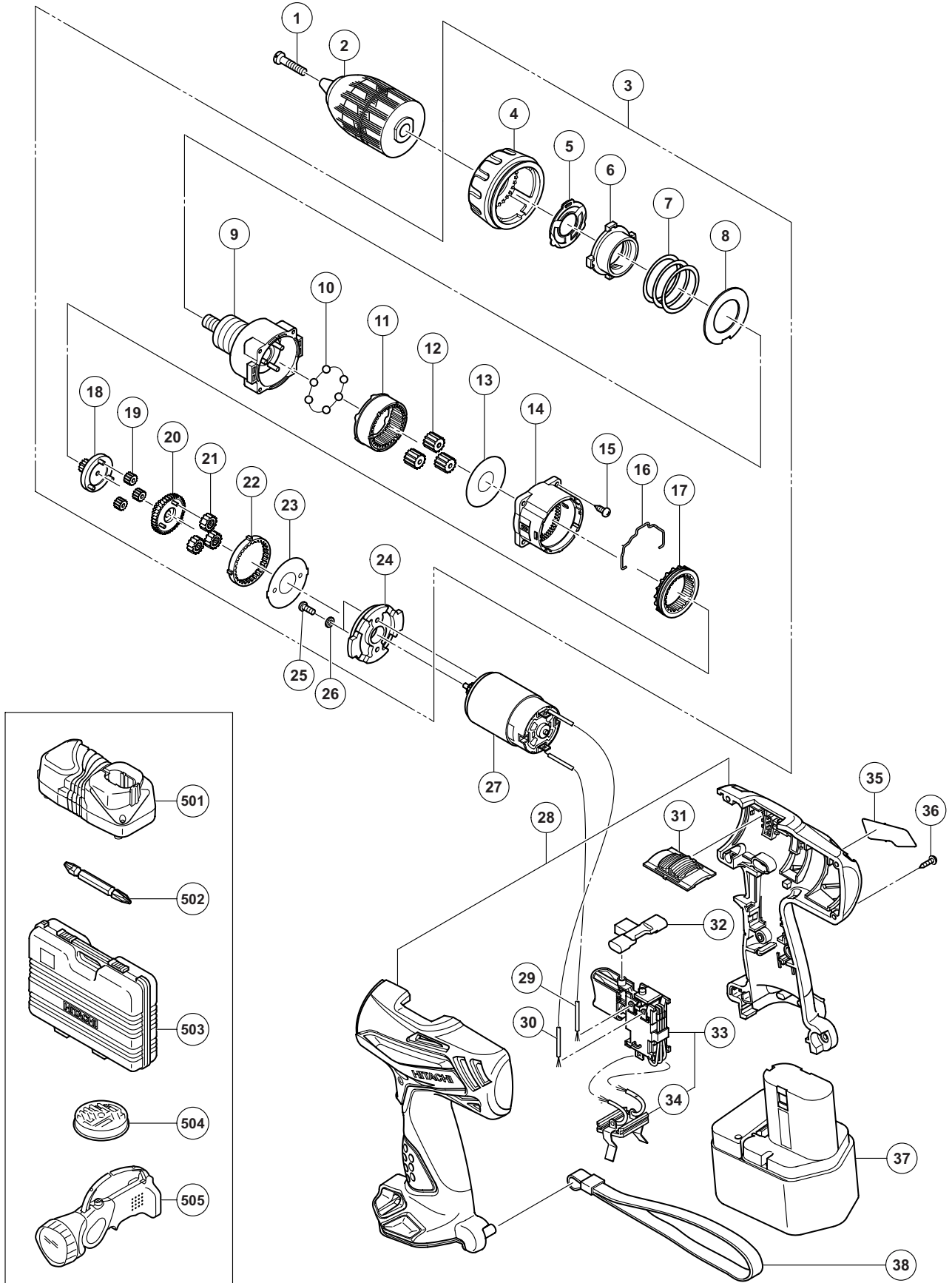


ELECTRIC TOOL PARTS LIST

CORDLESS DRIVER DRILL
Model DS 12DVFA

2013·1·25
(E1)



PARTS

DS 12DVFA

ITEM NO.	CODE NO.	DESCRIPTION	NO. USED	REMARKS
1	325-616	SPECIAL SCREW (LEFT HAND) (B) M5 X 25	1	
2	331-602	DRILL CHUCK 10 MM (W/O CHUCK WRENCH)	1	
3	335-672	GEAR BOX ASS'Y	1	INCLUD. 4-24
4	335-673	CLUTCH DIAL	1	
5	324-108	CLICK SPRING	1	
6	324-109	NUT	1	
7	324-110	SPRING	1	
8	324-347	WASHER (D)	1	
9	324-720	FRONT CASE	1	
10	306-936	STEEL BALL D5	6	
11	324-111	RING GEAR	1	
12	324-348	PLANET GEAR (C) SET (3 PCS.)	3	
13	324-349	WASHER (A)	1	
14	324-501	REAR CASE	1	
15	324-357	SCREW SET D3 X 12 (4 PCS.)	4	
16	324-115	SHIFT ARM	1	
17	324-351	SLIDE RING GEAR	1	
18	324-112	PINION (C)	1	
19	324-352	PLANET GEAR (B) SET (3 PCS.)	3	
20	324-113	PINION (B)	1	
21	324-354	PLANET GEAR (A) SET (3 PCS.)	3	
22	324-353	FIRST RING GEAR	1	
23	324-355	WASHER (B)	1	
24	324-356	MOTOR SPACER	1	
25	949-203	MACHINE SCREW M3 X 8 (10 PCS.)	2	
26	949-451	SPRING WASHER M3 (10 PCS.)	2	
27	318-244	MOTOR	1	
28	335-675	HOUSING (A).(B) SET	1	
29	335-713	INTERNAL WIRE (RED) L100	1	
30	335-714	INTERNAL WIRE (BLACK) L130	1	
31	324-116	SHIFT KNOB	1	
32	329-181	PUSHING BUTTON	1	
33	332-806	SW TERMINAL SET	1	INCLUD. 34
34	315-141	TERMINAL SUPPORT (A)	1	
35		NAME PLATE	1	
36	313-687	TAPPING SCREW (W/FLANGE) D3 X 16 (BLACK)	8	
37	333-156	BATTERY BCC 1215 (EUROPE, AUS, NZL, ASIA)	2	
38	306-952	STRAP (BLACK)	1	

