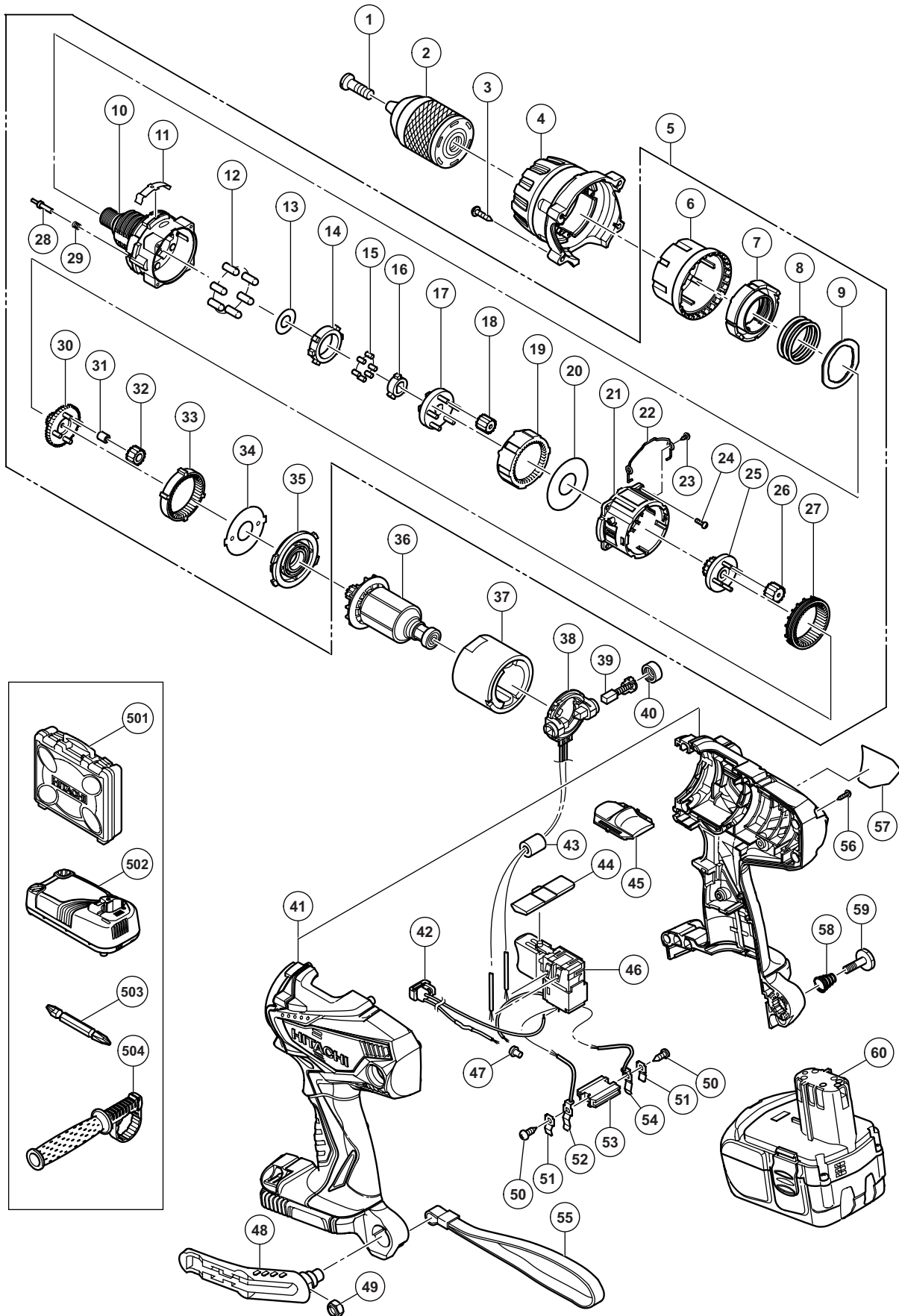


ELECTRIC TOOL PARTS LIST

CORDLESS DRIVER DRILL
Model DS 18DL2

2012·1·12
(E1)



PARTS

DS 18DL2

ITEM NO.	CODE NO.	DESCRIPTION	NO. USED	REMARKS
1	330-588	SPECIAL SCREW (LEFT HAND) M6 X 27	1	
2	323-898	DRILL CHUCK 13VLRN-N (W/O CHUCK WRENCH)	1	
3	334-473	TAPPING SCREW (W/SP. WASHER) D3 X 20 (BLACK)	4	
4	334-429	COVER (A)	1	
5	334-430	GEAR BOX ASS'Y	1	INCLUD. 6-35
6	334-431	DIAL HOLDER (A)	1	
7	331-881	NUT	1	
8	334-432	SPRING	1	
9	334-433	THRUST WASHER	1	
10	334-434	FRONT CASE	1	
11	333-516	CLICK SPRING	1	
12	333-539	PIN SET (6 PCS.)	6	
13	331-909	WASHER (A)	1	
14	331-903	LOCK RING (A)	1	
15	331-888	NEEDLE ROLLER SET (6 PCS.)	6	
16	331-904	LOCK CAM	1	
17	333-517	CARRIER	1	
18	333-518	PLANET GEAR (C) SET (5 PCS.)	5	
19	333-519	RING GEAR	1	
20	331-892	WASHER (A)	1	
21	331-893	REAR CASE	1	
22	331-894	SHIFT ARM	1	
23	330-579	SCREW SET D2 X 3.5 (2 PCS.)	2	
24	320-087	SCREW SET M3 X 12 (4 PCS.)	4	
25	331-897	PINION (C)	1	
26	333-520	PLANET GEAR (B) SET (4 PCS.)	4	
27	333-521	SLIDE RING GEAR	1	
28	333-522	STOPPER (A)	2	
29	333-523	STOPPER SPRING	2	
30	333-524	PINION (B)	1	
31	331-926	NEEDLE BEARING SET (4 PCS.)	4	
32	334-441	PLANET GEAR (A) SET (4 PCS.)	4	
33	334-435	FIRST RING GEAR	1	
34	322-988	WASHER (B)	1	
35	331-902	MOTOR SPACER	1	
36	360-930	ARMATURE AND PINION SET 18 V	1	
37	334-442	MAGNET	1	
38	334-436	BRUSH BLOCK	1	
39	999-054	CARBON BRUSH 5 X 6 X 11.5 (1 PAIR)	2	
40	319-918	BRUSH CAP	2	
41	334-448	HOUSING (A).(B) SET	1	
42	334-449	LED HOLDER	1	
* 43	334-443	FERRITE CORE	1	FOR EUROPE, AUT, NOR, SWE, DEN, FIN, RUS
44	331-907	PUSHING BUTTON	1	
45	334-267	SHIFT KNOB	1	
46	334-451	DC-SPEED CONTROL SWITCH	1	
47	959-140	CONNECTOR 50091 (10 PCS.)	1	
48	320-287	HOOK ASS'Y	1	INCLUD. 49
49	320-288	V-LOCK NUT M5	1	
50	958-715	TAPPING SCREW D4 X 10	2	

PARTS

DS 18DL2

ITEM NO.	CODE NO.	DESCRIPTION	NO. USED	REMARKS
51	996-118	HOLDER SPRING	2	
52	323-003	TERMINAL	1	
53	320-997	TERMINAL PIECE	1	
54	322-995	TERMINAL	1	
55	306-952	STRAP (BLACK)	1	
56	313-687	TAPPING SCREW (W/FLANGE) D3 X 16 (BLACK)	11	
57		NAME PLATE	1	
58	319-926	HOOK SPRING	1	
59	320-881	SPECIAL SCREW (A) M5	1	
* 60	326-240	BATTERY EBM 1830 (EUROPE, AUS, NZL)	2	
* 60	334-425	BATTERY BCL 1840 (EUROPE, AUS, NZL)	2	

STANDARD ACCESSORIES

ITEM NO.	CODE NO.	DESCRIPTION	NO. USED	REMARKS
501	323-230	CASE	1	
* 502		CHARGER (MODEL UC 18YRL)	1	
* 502		CHARGER (MODEL UC 18YMRL)	1	
503	983-006	+ DRIVER BIT NO. 2 65L	1	
504	331-906	SIDE HANDLE	1	

OPTIONAL ACCESSORIES

ITEM NO.	CODE NO.	DESCRIPTION	NO. USED	REMARKS
601	303-709	DEPTH GAUGE	1	

