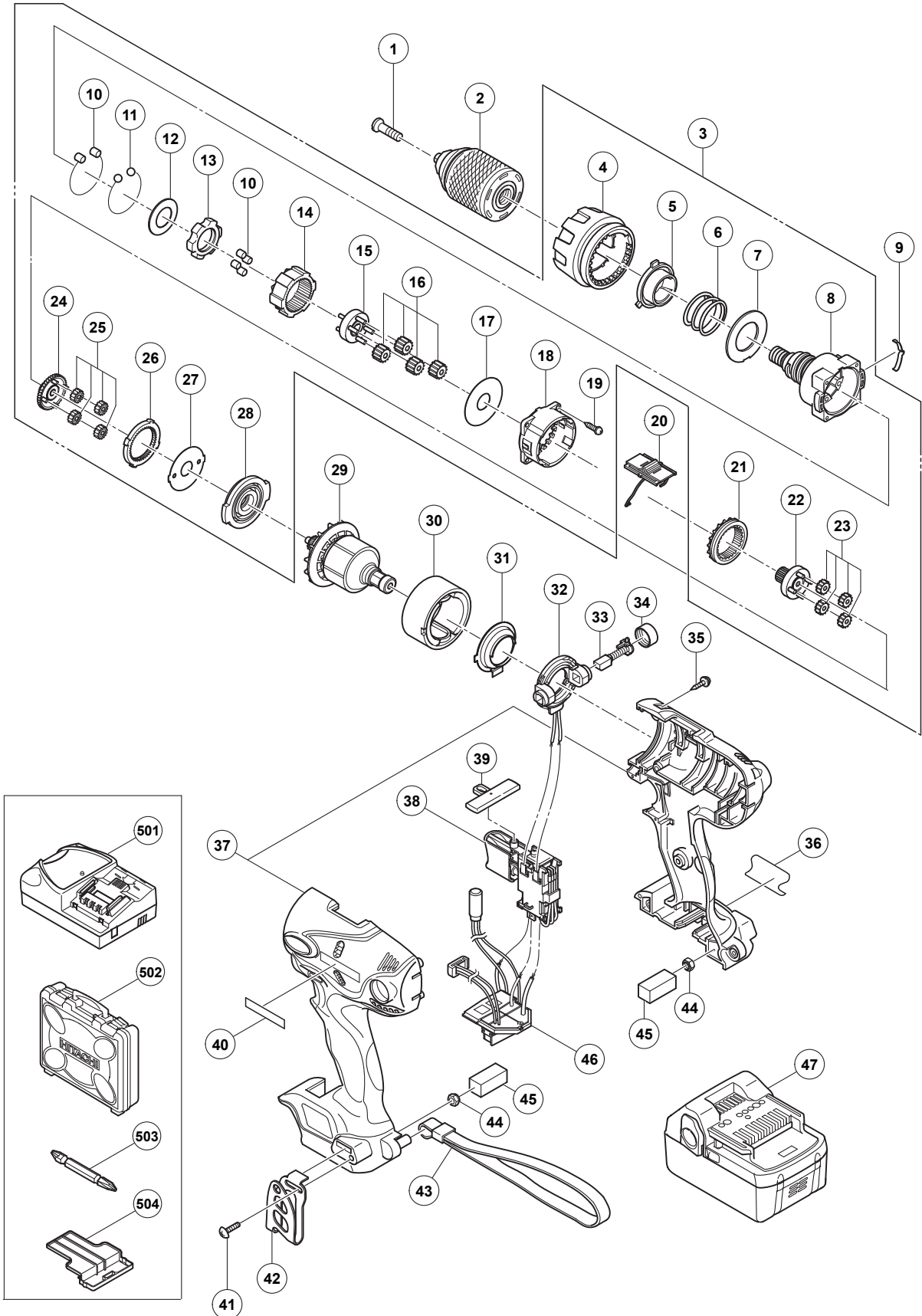


ELECTRIC TOOL PARTS LIST

CORDLESS DRIVER DRILL
Model DS 18DSL

2008·9·19
(E1)



PARTS

DS 18DSL

ITEM NO.	CODE NO.	DESCRIPTION	NO. USED	REMARKS	
*	1	330-094	SPECIAL SCREW (LEFT HAND) M6	1	
*	1	311-959	SPECIAL SCREW (LEFT HAND) M6X23	1	FOR NOR, SWE, DEN, FIN
*	2	323-898	DRILL CHUCK 13VLRN-N (W/O CHUCK WRENCH)	1	
*	2	320-684	DRILL CHUCK 13VLRG-N (W/O CHUCK WRENCH)	1	FOR NOR, SWE, DEN, FIN
	3	330-129	GEAR BOX ASS'Y	1	INCLUD. 4-8, 10-19, 21-28
	4	329-089	CLUTCH DIAL	1	
	5	320-758	NUT	1	
	6	320-757	SPRING	1	
	7	320-756	THRUST PLATE	1	
	8	330-130	FRONT CASE	1	
	9	320-773	CLICK SPRING	1	
	10	319-744	ROLLER	10	
	11	306-936	STEEL BALL D5	6	
	12	328-717	WASHER (B)	1	
	13	328-718	LOCK RING	1	
	14	328-721	RING GEAR	1	
	15	328-720	CARRIER	1	
	16	328-722	PLANET GEAR (C) SET (4 PCS.)	4	
	17	320-762	PLATE (B)	1	
	18	320-763	REAR CASE	1	
	19	312-712	SCREW SET D3X12 (4 PCS.)	4	
	20	330-747	SHIFT KNOB (A)	1	
	21	330-059	SLIDE RING GEAR	1	
	22	328-724	PINION (C)	1	
	23	320-781	PLANET GEAR (B) SET (4 PCS.)	4	
	24	328-725	PINION (B)	1	
	25	328-727	PLANET GEAR (A) SET (4 PCS.)	4	
	26	328-726	FIRST RING GEAR	1	
	27	320-768	PLATE (A)	1	
	28	320-769	MOTOR SPACER	1	
	29	360-860	ARMATURE AND PINION SET	1	
	30	322-520	MAGNET	1	
	31	322-521	DUST GUARD	1	
	32	322-993	BRUSH BLOCK	1	
	33	999-054	CARBON BRUSH 5X6X11.5 (1 PAIR)	2	
	34	319-918	BRUSH CAP	2	
	35	313-687	TAPPING SCREW (W/FLANGE) D3X16 (BLACK)	8	
	36		NAME PLATE	1	
*	37	330-090	HOUSING (A).(B) SET (GREEN)	1	
*	37	330-091	HOUSING (A).(B) SET (RED)	1	
*	37	330-092	HOUSING (A).(B) SET (VIOLET BLUE)	1	
*	37	330-093	HOUSING (A).(B) SET (PEARL WHITE)	1	
	38	329-173	DC-SPEED CONTROL SWITCH	1	
	39	329-454	PUSHING BUTTON (A)	1	
	40		HITACHI LABEL	1	
	41	327-001	M4 TRUSS HD. SCREW (BLACK)	1	
	42	326-790	HOOK (A)	1	
	43	306-952	STRAP (BLACK)	1	
	44	327-002	LOCK NUT M4 (BLACK)	2	
	45	327-004	PACKING	2	

