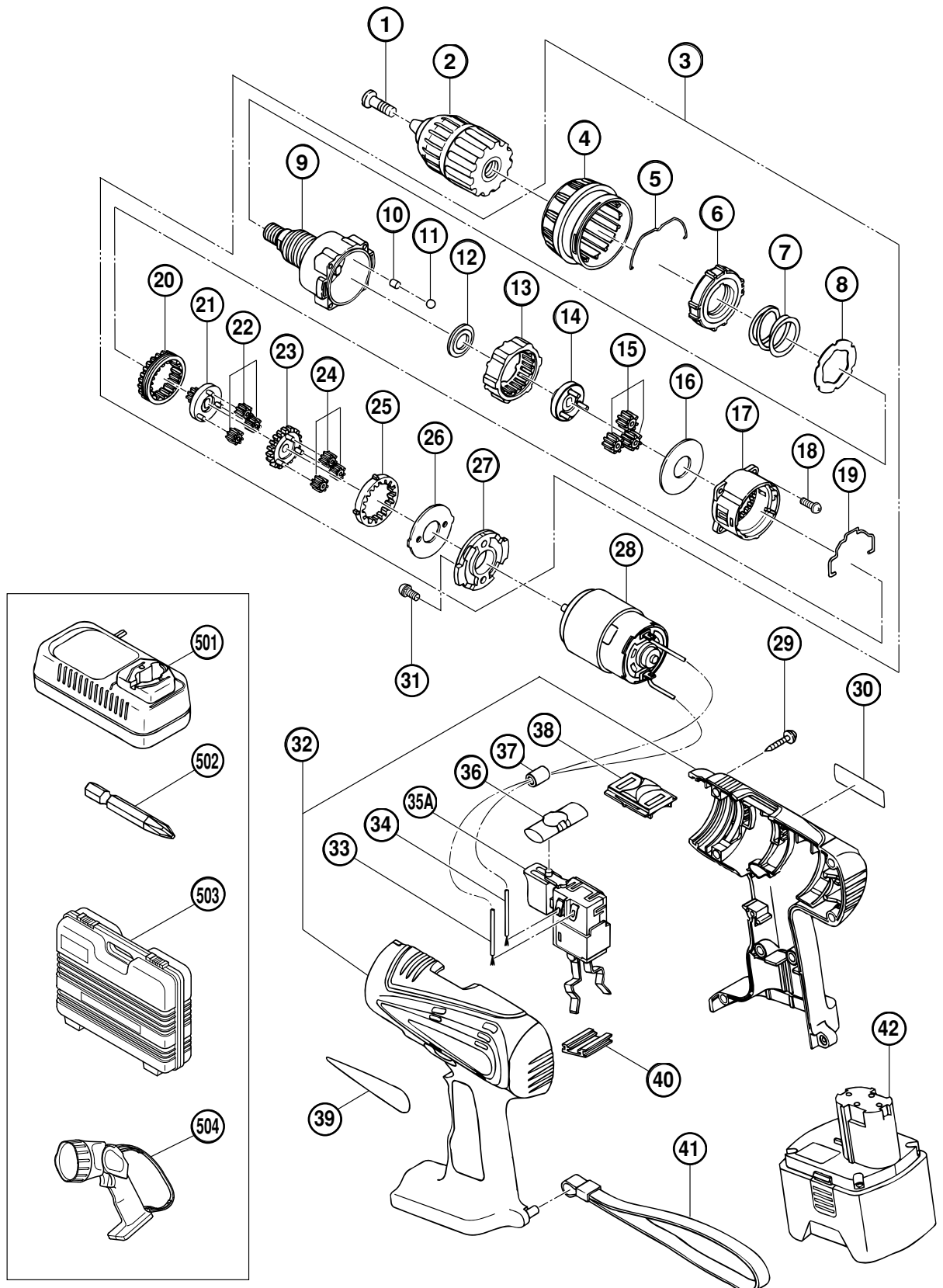


ELECTRIC TOOL PARTS LIST



■ CORDLESS DRIVER DRILL Model DS 18DVB

2001·8·27
(E2)



PARTS

DS 18DVB

ITEM NO.	CODE NO.	DESCRIPTION	NO. USED	REMARKS	
1	311-959	SPECIAL SCREW (LEFT HAND) M6X23	1		
2	319-766	DRILL CHUCK 13VLR-F-N (W/O CHUCK WRENCH)	1		
3	319-739	GEAR BOX ASS'Y	1	INCLUD.4-27	
4	319-755	CAP	1		
5	319-754	CLICK SPRING	1		
6	319-743	NUT	1		
7	319-742	SPRING	1		
8	319-741	THRUST WASHER	1		
9	319-740	FRONT CASE	1		
10	319-744	ROLLER	6		
11	306-936	STEEL BALL D5	6		
12	319-746	SPACER WASHER	1		
13	319-745	RING GEAR	1		
14	319-747	CARRIER	1		
15	319-769	PLANET GEAR (C) SET (3 PCS.)	3		
16	312-704	WASHER (A)	1		
17	319-748	REAR CASE	1		
18	312-712	SCREW SET D3X12 (4 PCS.)	4		
19	319-753	SHIFT ARM	1		
20	319-750	SLIDE RING GEAR	1		
21	319-749	PINION (C)	1		
22	319-768	PLANET GEAR (B) SET (3 PCS.)	3		
23	319-751	PINION (B)	1		
24	319-767	PLANET GEAR (A) SET (3 PCS.)	3		
25	319-752	FIRST RING GEAR	1		
26	312-716	WASHER (B)	1		
27	316-955	MOTOR SPACER	1		
28	319-756	MOTOR	1		
29	991-672	TAPPING SCREW (W/WASHER) D3X16	8		
*	30	NAME PLATE	1		
	31	317-333 MACHINE SCREW (W/SP. WASHER) M4X6	2		
	32	319-761 HOUSING (A).(B) SET	1		
*	33	319-759 INTERNAL WIRE (BLACK) 100L	1		
*	33	320-159 INTERNAL WIRE (BLACK) 160L	1	EXCEPT FOR NZL,AUS,USA,CAN	
	34	319-758 INTERNAL WIRE (RED) 130L	1		
	35A	320-091 DC-SPEED CONTROL SWITCH	1		
	36	319-760 PUSHING BUTTON	1		
*	37	318-247 FERRITE CORE	1	EXCEPT FOR NZL,AUS,USA,CAN	
	38	318-234 SHIFT KNOB	1		
	39	HITACHI LABEL	1		
	40	315-141 TERMINAL SUPPORT (A)	1		
	41	306-952 STRAP (BLACK)	1		
*	42	319-764 BATTERY EB 1820 (W/ENGLISH N.P)	1		
*	42	319-762 BATTERY EB 1820 (W/ENGLISH N.P)	1	FOR NZL	
*	42	319-763 BATTERY EB 1820 (W/ENGLISH N.P)	1	FOR USA,CAN	
*	42	319-765 BATTERY EB 1830H (W/ENGLISH N.P)	1		

