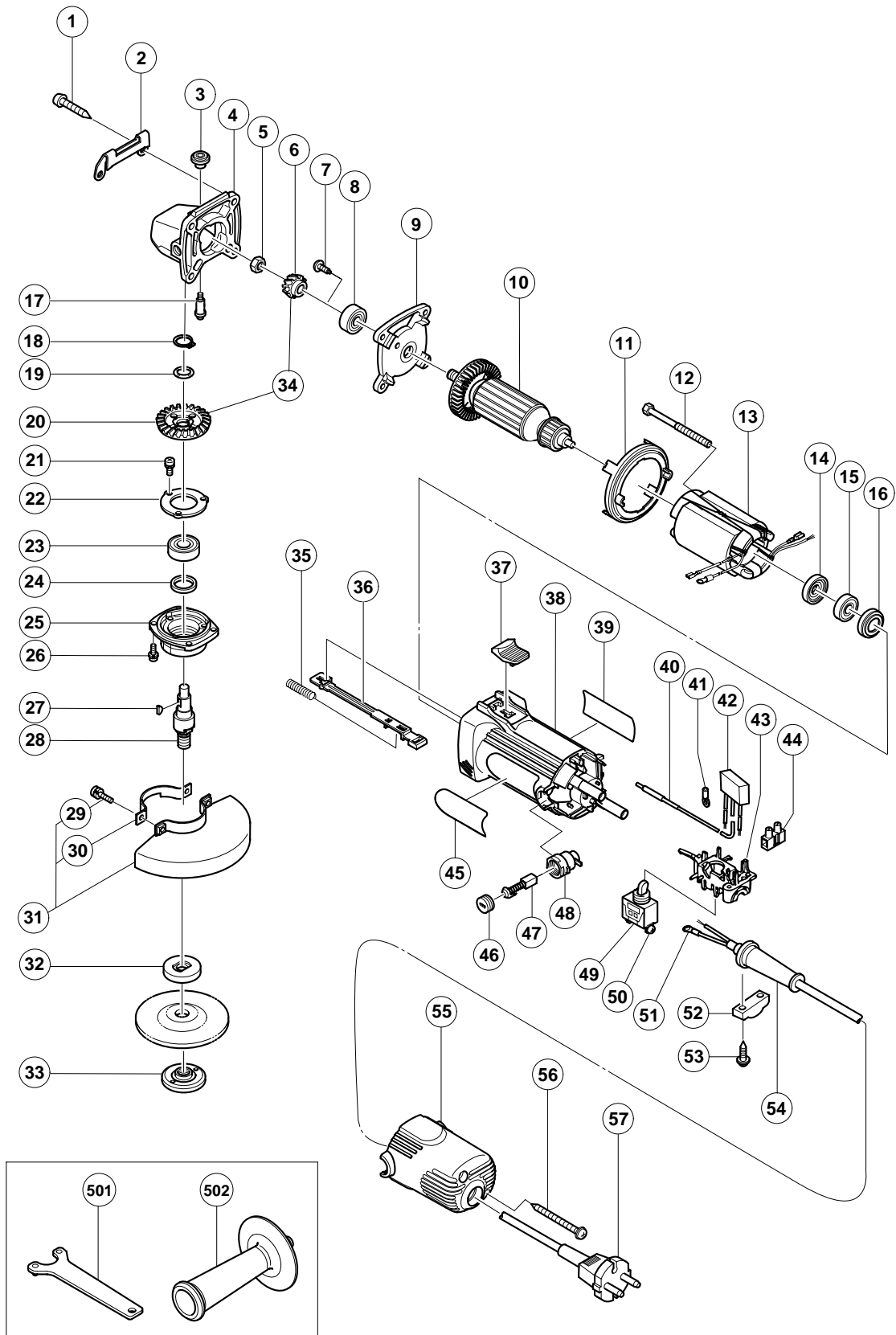


ELECTRIC TOOL PARTS LIST

DISC GRINDER Model FG 12SB2

2003 • 2 • 5
(E1)



PARTS

FG 12SB2

| ITEM NO. | CODE NO. | DESCRIPTION | NO. USED | REMARKS |
|----------|----------|--|----------|----------------------|
| 1 | 320-523 | TAPPING SCREW D5X25 (BLACK) | 4 | |
| 2 | 302-149 | GUARD PLATE | 1 | |
| 3 | 301-944 | PUSHING BUTTON | 1 | |
| 4 | 314-125 | GEAR COVER ASS'Y | 1 | INCLUD. 3, 17 |
| 5 | 309-191 | SPECIAL NUT M6 | 1 | |
| 6 | 321-724 | PINION | 1 | |
| 7 | 314-430 | SLOTTED HD. SCREW (SEAL LOCK) M4X10 | 2 | |
| 8 | 608-VVM | BALL BEARING 608VVC2PS2L | 1 | |
| 9 | 301-935 | INNER COVER | 1 | |
| 10 | 360-605E | ARMATURE 220V-240V | 1 | |
| 11 | 306-840 | FAN GUIDE | 1 | |
| 12 | 963-712 | HEX. HD. TAPPING SCREW D4X65 | 2 | |
| 13 | 340-552E | STATOR 220V-230V | 1 | |
| 14 | 321-722 | DUST SEAL | 1 | |
| 15 | 626-VVM | BALL BEARING 626VVC2PS2L | 1 | |
| 16 | 309-929 | RUBBER BUSHING | 1 | |
| 17 | 301-943 | LOCK PIN | 1 | |
| 18 | 316-487 | RETAINING RING FOR D11 SHAFT | 1 | |
| 19 | 316-486 | WAVE WASHER | 1 | |
| 20 | 321-725 | GEAR | 1 | |
| 21 | 987-201 | SEAL LOCK SCREW (W/SP. WASHER) M4X10 | 3 | |
| 22 | 938-058 | BEARING COVER (B) | 1 | |
| 23 | 600-1VV | BALL BEARING 6001VVCMP2L | 1 | |
| 24 | 301-946 | FELT PACKING | 1 | |
| 25 | 301-947 | PACKING GLAND | 1 | |
| 26 | 987-203 | SEAL LOCK SCREW (W/SP. WASHER) M4X12 | 4 | |
| 27 | 302-047 | WOODRUFF KEY | 1 | |
| 28 | 321-729 | SPINDLE M14 | 1 | |
| 29 | 308-386 | MACHINE SCREW (W/SP. WASHER) M5X16 (BLACK) | 2 | |
| 30 | 301-949 | SET PLATE | 1 | |
| 31 | 315-492 | WHEEL GUARD ASS'Y | 1 | INCLUD. 29, 30 |
| 32 | 937-817Z | WHEEL WASHER | 1 | |
| 33 | 994-324 | WHEEL NUT M14 | 1 | |
| 34 | 321-723 | GEAR AND PINION ASS'Y | 1 | INCLUD. 6, 20 |
| 35 | 314-429 | SPRING | 1 | |
| 36 | 314-427 | SLIDE BAR | 1 | |
| 37 | 314-428 | SLIDE KNOB | 1 | |
| 38 | 321-744 | HOUSING ASS'Y | 1 | INCLUD. 16 |
| 39 | | NAME PLATE | 1 | |
| * 40 | 314-854 | EARTH TERMINAL | 1 | FOR NOISE SUPPRESSOR |
| * 41 | 980-063 | TERMINAL | 1 | FOR NOISE SUPPRESSOR |
| 42 | 994-273 | NOISE SUPPRESSOR | 1 | |
| 43 | 314-432 | SWITCH HOLDER | 1 | |
| 44 | 938-307 | PILLAR TERMINAL | 1 | |
| 45 | | HITACHI LABEL | 1 | |
| 46 | 936-551 | BRUSH CAP | 2 | |
| 47 | 999-021 | CARBON BRUSH (1 PAIR) | 2 | |
| 48 | 313-777 | BRUSH HOLDER | 2 | |
| 49 | 314-603 | SWITCH (1P SOLDER TYPE) | 1 | INCLUD. 50 |
| 50 | 305-499 | MACHINE SCREW (W/WASHER) M3.5X6 | 2 | |
| * 51 | 980-063 | TERMINAL | 1 | FOR CORD |

