

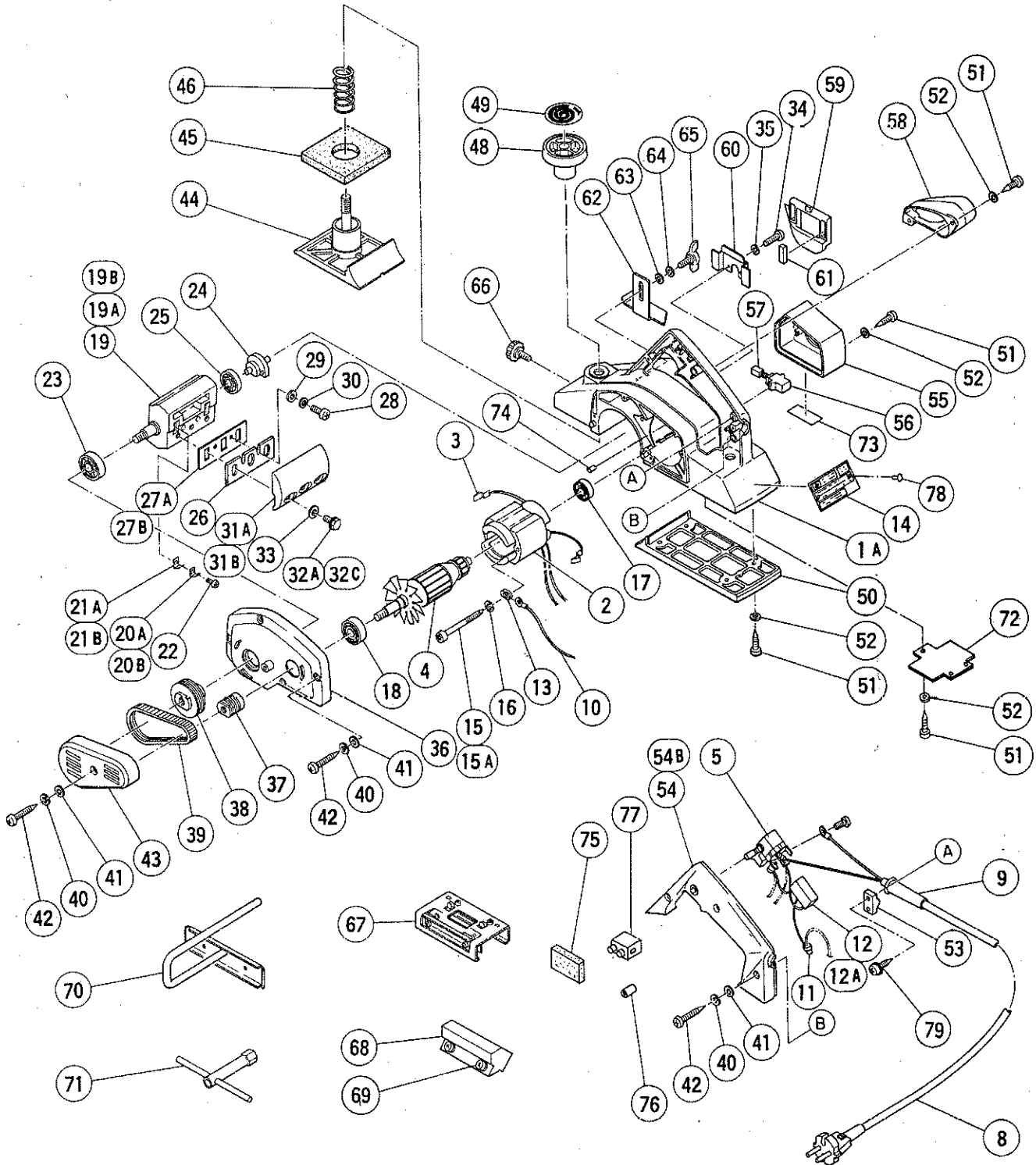
ELECTRIC TOOL PARTS LIST

PLANER

1987·11·30

Model FU-20

FU-20(E7)



PARTS

FU-20(E7)

Item No.	Code No.	Part Name	Q'ty	Remarks
1A	958820Z	Housing Handle Cover Ass'y	1	includes 15A
2	—	Stator Ass'y	1	See alternative parts
3	—	Brush Terminal	2	See alternative parts
4	—	Armature	1	See alternative parts
5	—	Switch	1	See alternative parts
8	—	Cord	1	See alternative parts
9	—	Cord Armor	1	See alternative parts
10	—	Internal Wire	1	See alternative parts
11	—	Connector	1	See alternative parts
12	—	Noise Suppressor	1	See alternative parts
13	—	Grounding Washer	1	See alternative parts
14	—	Name Plate	1	See alternative parts
15	936502	Machine Screw M4 x 60	2	till 8, 1987
15A	960108	Hexagon Hd. Tapping Screw D4 x 60	2	since 9, 1987
16	949453	Spring Lock Washer	2	for M4 till 8, 1987 (10 pcs.)
17	939385	Ball Bearing (608VVC2 PS2-L)	1	
18	939220	Ball Bearing /6200VVCM)	1	
19	—	Cutter Block Ass'y	1	See alternative parts
20A	—	Holder Spring	4	See alternative parts
20B	—	Holder Spring (B)	4	See alternative parts
21A	—	Guard Plate (A)	4	See alternative parts
22	949214	Machine Screw M4 x 6	4	(10 pcs.)
23	939498	Ball Bearing (6201VVCM)	1	
24	958824Z	Shaft (B)	1	
25	939389	Ball Bearing (629VVC2)	1	
26	879416	Blade 82 mm	2	(2 pcs.)
27A	—	Back Metal	2	See alternative parts
28	949215	Machine Screw M4 x 8	4	(10 pcs.)
29	949423	Washer	4	for M4 (10 pcs.)
30	949453	Spring Lock Washer	4	for M4 (10 pcs.)
31A	—	Blade Holder	2	See alternative parts
32A	—	Bolt	6	See alternative parts
33	940391	Washer	6	till 3, 1987
34	949218	Machine Screw M4 x 14	2	(10 pcs.)
35	949453	Spring Lock Washer	2	for M4 (10 pcs.)
36	958827Z	End Bracket	1	
37	958828	Pulley (A)	1	
38	958829Z	Pulley (B)	1	
39	946463	Belt	1	
40	949453	Spring Lock Washer	8	for M4 (10 pcs.)
41	949423	Washer	8	for M4 (10 pcs.)
42	958705	Tapping Screw D4 x 25	8	
43	958830Z	Belt Cover	1	
44	958831Z	Front Base	1	
45	958708	Rubber Packing	1	
46	958709	Spring	1	
48	942328	Knob	1	
49	958832Z	Scale	1	
50	958833Z	Rear Base	1	
51	954004	Tapping Screw D4 x 16	9	
52	949423	Washer	9	for M4 (10 pcs.)
53	937631	Cord Clip	1	
54	958859Z	Handle Cover	1	for w/o Lock Switch since 4, 1979

ALTERNATIVE PARTS

FU-20(E7)

Item No.	Code No.	Part Name	Q'ty	Remarks
5	957747	Single Pole Switch (Screw Type)	1	w/lock
	971667Z	Double Pole Switch (Pillar Type)	1	w/lock
	958400Z	Double Pole Switch (Pillar Type)	1	w/o lock
	963756Z	Double Pole Switch	1	Safety Lock Type
8	500212Z	Cord	1	for Asia (Cord Armor D8.2)
	500226Z	Cord	1	for Oceania (Cord Armor D8.2)
	500223Z	Cord	1	for Singapore (Cord Armor D10.2)
	502231Z	Cord	1	for S. Africa (Cord Armor D8.2)
	500234Z	Cord	1	for Europe (Cord Armor D8.2)
	500237Z	Cord	1	for U.K. (Cord Armor D8.2)
9	930487	Cord Armor D8.2	1	
	930026	Cord Armor D10.2	1	
10	958711	Internal Wire	1	
11	959140	Connector (50091)	1	(10 pcs.)
12	958847	Noise Suppressor	1	w/o terminal for N.Z., S. Africa
	958846Z	Noise Suppressor	1	w/o terminal for Switzerland
	500262Z	Noise Suppressor	1	w/o terminal for Finland
	981372	Noise Suppressor	1	w/o terminal
12A	991313	Noise Suppressor	1	for U.K., F.R. Germany, Netherlands, Sweden, Austria, France, Norway
	971828	Noise Suppressor	1	for Italy, Denmark
13	957592	Grounding Washer D4	1	
14	—	Name Plate	1	
19	958858Z	Cutter Block Ass'y	1	for Denmark includes 20, 21B, 22~25
19A	958848Z	Cutter Block Ass'y	1	includes 20A, 21A, 22~25, 31A, 32A, 33 till 4, 1978
19B	958849Z	Cutter Block Ass'y	1	includes 20B, 21B, 22~25 since 5, 1978
20A	958699	Holder Spring	4	till 4, 1978
20B	958731Z	Holder Spring (B)	4	since 5, 1978
21A	958700	Guard Plate (A)	4	till 4, 1978
21B	958732Z	Guard Plate (A)	4	since 5, 1978
27A	958701	Back Metal	2	till 4, 1978
27B	958733Z	Back Metal	2	since 5, 1978
31A	958826Z	Blade Holder	2	till 4, 1978 (2 pcs.)
31B	958850Z	Blade Holder	2	since 5, 1978 (2 pcs.)
32A	940365	Bolt	6	till 4, 1978
32C	990669	Bolt	6	since 5, 1978
70	958842Z	Guide	1	
	958855Z	Guide (A)	1	for U.K.
75	963243	Support	1	

PARTS

FU-20(E7)

Item No.	Code No.	Part Name	Q'ty	Remarks
54B	958820Z	Housing Handle Cover Ass'y	1	includes 15A
54B	958854Z	Handle Cover	1	since 4, 1979
55	958835Z	Tail Cover	1	
56	955203	Brush Holder	2	
57	999041	Carbon Brush	2	(2 pcs.)
58	958836Z	Chip Guide	1	
59	958837Z	Blade Cover	1	
60	958838Z	Cover	1	
61	958839Z	Magnet	2	
62	958840Z	Depth Guide	1	
63	949424	Washer	1	for M5 (10 pcs.)
64	949454	Spring Lock Washer	1	for M5 (10 pcs.)
65	949397	Wing Bolt	M5 x 10	1 (10 pcs.)
66	940650	Stopper Screw	M5 x 14	1
67	958736	Set Gauge	1	
68	940653	Blade Sharpening Ass'y	1	includes 69 till 2, 1987
69	940654	Machine Screw	M6 x 12	4 w/Washer till 1, 1987
70	—	Guide Ass'y	1	See alternative parts
71	940543	Box Wrench	10 mm	1
72	958844Z	Plate	1	
74	963227	Bearing Lock	1	
75	—	Support	1	See alternative parts
76	—	Tube (D)	2	See alternative parts
77	—	Pillar Terminal	1	See alternative parts
78	—	Rivet	2	See alternative parts
79	984750	Tapping Screw	D4 x 16	2 w/Flange

STANDARD ACCESSORIES

Item No.	Code No.	Part Name	Q'ty	Remarks
2	958821C	Stator Ass'y	110V ~ 120V	1 includes 3
	958821E	Stator Ass'y	220V ~ 230V	1 includes 3
	958821F	Stator Ass'y	240V	1 includes 3
	958821G	Stator Ass'y	220V ~ 230V	1 for N.Z., Europe includes 3
	958848F	Stator Ass'y	240V	1 for U.K. includes 3
	958856J	Stator Ass'y	220V ~ 230V	1 for S. Africa, 6, 1982, for Sweden, Austria, Norway includes 3
	958821K	Stator Ass'y	110V	1 for U.K. includes 3
	958821M	Stator Ass'y	240V	1 for Australia includes 3
3	941615	Brush Terminal	2	
	958857Z	Brush Terminal	2	for Austria
4	958822C	Armature	110V ~ 120V	1
	958822E	Armature	220V ~ 230V	1
	958822F	Armature	240V	1
	958849J	Armature Ass'y	110V	1 for U.K. includes 18
	958849G	Armature Ass'y	220V	1 for Netherlands includes 18
	958849H	Armature Ass'y	240V	1 for U.K. includes 18
	958822G	Armature	220V ~ 230V	1 for S. Africa

