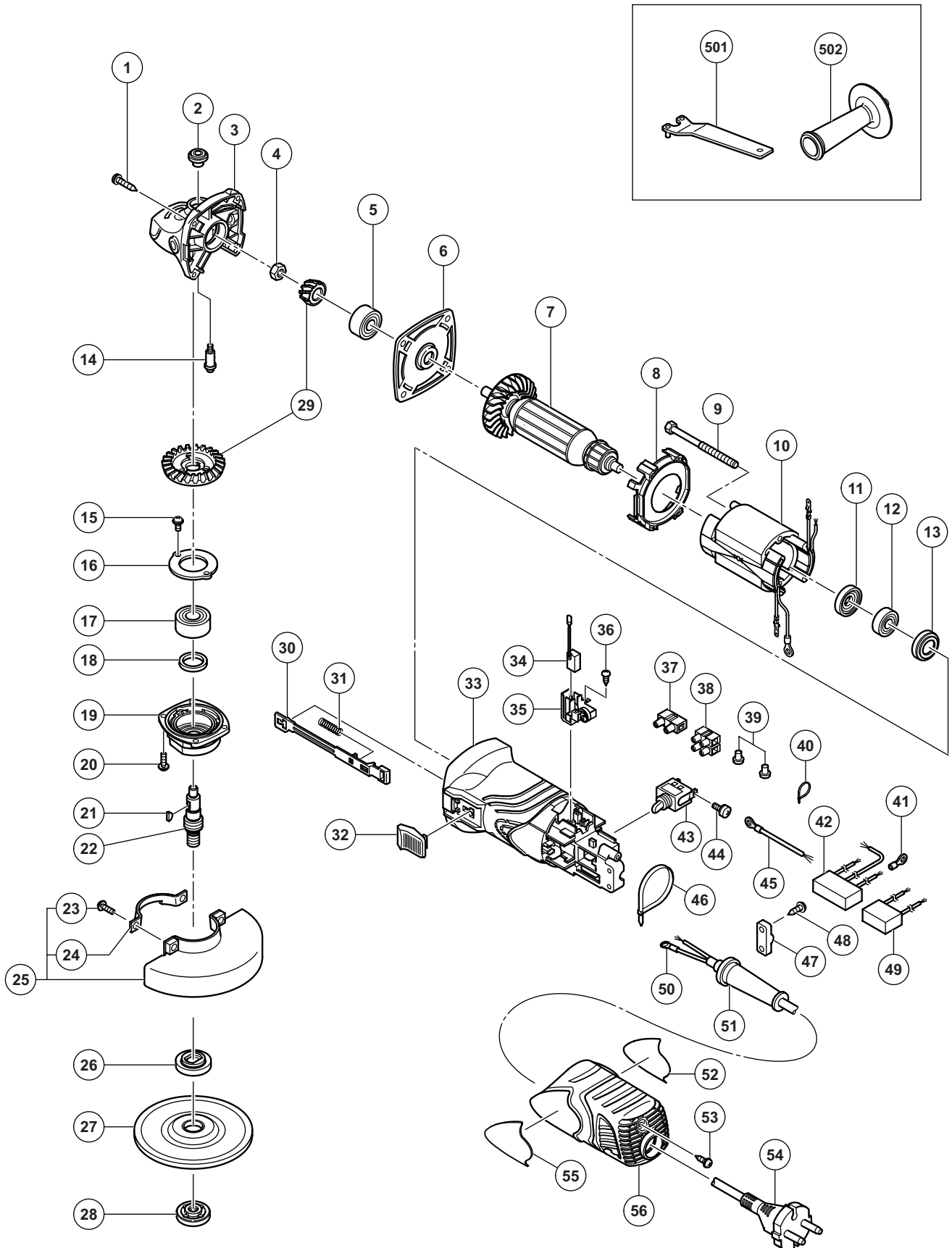


ELECTRIC TOOL PARTS LIST

■ DISC GRINDER
Model G 10SN

2010-12-22
(E1)



PARTS

G 10SN

ITEM NO.	CODE NO.	DESCRIPTION	NO. USED	REMARKS
1	307-028	TAPPING SCREW (W/FLANGE) D4 X 25 (BLACK)	4	
2	301-944	PUSHING BUTTON	1	
3	332-529	GEAR COVER ASS'Y	1	INCLUD. 2, 14
4	309-191	SPECIAL NUT M6	1	
5	628-VVC	BALL BEARING 628VVC2PS2-L	1	
6	327-887	BEARING HOLDER	1	
* 7	360-891C	ARMATURE 110V	1	
* 7	360-891U	ARMATURE ASS'Y 120V	1	INCLUD. 5, 11, 12
* 7	360-891E	ARMATURE 220V	1	
* 7	360-891F	ARMATURE 230V	1	
* 7	360-891G	ARMATURE 240V	1	
8	327-886	FAN GUIDE	1	
9	982-021	HEX. HD. TAPPING SCREW D4 X 70	2	
* 10	340-791B	STATOR 110V	1	
* 10	340-791A	STATOR 110V-120V	1	FOR UAE, USA, CAN
* 10	340-791D	STATOR 220V	1	
* 10	340-791E	STATOR 220V	1	FOR CHN, KOR
* 10	340-791J	STATOR 230V-240V	1	
* 10	340-791K	STATOR 230V-240V	1	FOR SIN, MAL
* 10	340-791H	STATOR 230V-240V	1	FOR IND
11	321-722	DUST SEAL	1	
12	626-VVM	BALL BEARING 626VVC2PS2L	1	
13	309-929	RUBBER BUSHING	1	
14	301-943	LOCK PIN	1	
15	987-201	SEAL LOCK SCREW (W/SP. WASHER) M4 X 10	2	
16	316-490	BEARING COVER	1	
17	620-1VV	BALL BEARING 6201VVCMP2L	1	
18	301-946	FELT PACKING	1	
19	316-489	PACKING GLAND	1	
20	987-203	SEAL LOCK SCREW (W/SP. WASHER) M4 X 12	4	
21	302-047	WOODRUFF KEY	1	
* 22	332-526	SPINDLE	1	
* 22	333-594	SPINDLE	1	FOR USA, CAN
23	308-386	MACHINE SCREW (W/SP. WASHER) M5 X 16(BLACK)	2	
24	301-949	SET PLATE	1	
25	331-076	WHEEL GUARD ASS'Y	1	INCLUD. 23, 24
* 26	320-497	WHEEL WASHER	1	
* 26	937-834Z	WHEEL WASHER	1	FOR USA, CAN
27	316-820	D. C. WHEELS 100MM X 4T A36Q (25 PCS.)	1	
* 28	321-795	WHEEL NUT (C)	1	
* 28	312-048	WHEEL NUT M10 X P1.25	1	FOR USA, CAN
29	327-888	GEAR SET	1	
30	333-366	SLIDE BAR	1	
31	314-429	SPRING	1	
32	314-428	SLIDE KNOB	1	
33	333-365	HOUSING ASS'Y	1	INCLUD. 13
34	999-005	CARBON BRUSH (1 PAIR)	2	
35	327-895	BRUSH HOLDER	2	
36	328-210	TAPPING SCREW D3 X 8	4	
* 37	938-307	PILLAR TERMINAL	1	FOR TPE, SIN, MAL, AUS, NZL, GBR, USA, CAN, KOR

