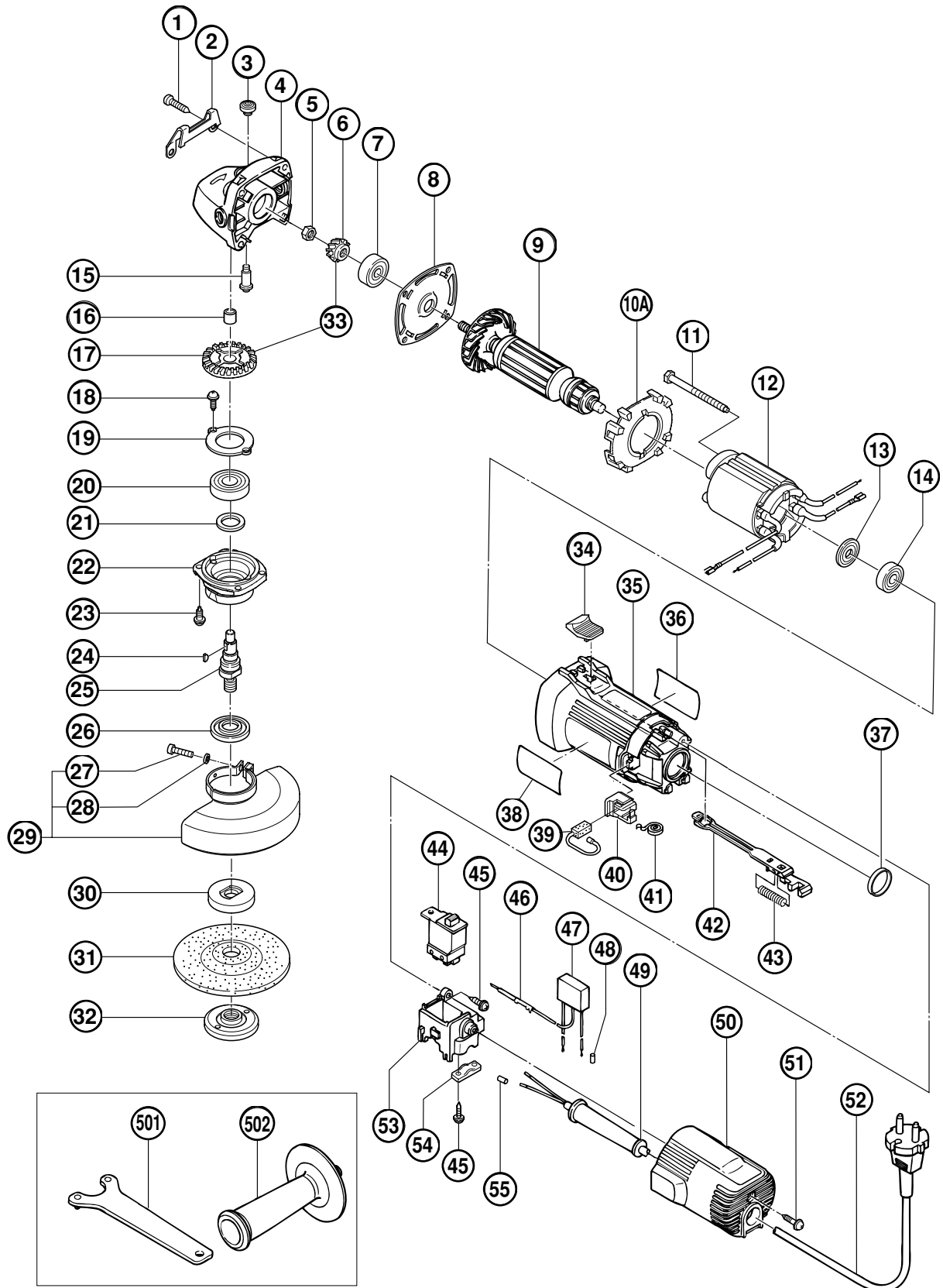


ELECTRIC TOOL PARTS LIST

■ DISC GRINDER
Model G 12S2

2001·8·22

(E2)



PARTS

G 12S2

ITEM NO.	CODE NO.	DESCRIPTION	NO. USED	REMARKS
1	937-807	TAPPING SCREW D5X25	4	
2	317-807	GUARD PLATE	1	
3	301-944	PUSHING BUTTON	1	
4	316-484	GEAR COVER ASS'Y	1	INCLUD.3,15,16
5	301-941	SPECIAL NUT M7	1	
6	317-820	PINION	1	
7	628-VVC	BALL BEARING 628VVC2PS2L	1	
8	316-480	BEARING HOLDER	1	
* 9	360-497C	ARMATURE 110V	1	
* 9	360-497E	ARMATURE 220V	1	
* 9	360-497F	ARMATURE 230V-240V	1	
* 9	360-497U	ARMATURE ASS'Y 110V-115V	1	INCLUD.7,13,14 FOR USA,CAN
10A	319-898	FAN GUIDE	1	
11	982-021	HEX. HD. TAPPING SCREW D4X70	2	
* 12	340-441C	STATOR (A) 110V-115V	1	
* 12	340-441E	STATOR (A) 220V-230V	1	
* 12	340-441F	STATOR (A) 240V	1	
13	315-877	DUST SEAL	1	
14	608-VVM	BALL BEARING 608VVC2PS2L	1	
15	301-943	LOCK PIN	1	
16	673-422	NEEDLE BEARING (HK0709)	1	
17	317-821	GEAR	1	
18	997-263	SEAL LOCK SCREW (W/SP. WASHER) M4X10	2	
19	316-490	BEARING COVER	1	
20	620-1DD	BALL BEARING 6201DDCMPS2L	1	
21	301-946	FELT PACKING	1	
22	317-823	PACKING GLAND	1	
23	307-127	SEAL LOCK SCREW (W/SP. WASHER) M4X12	4	
24	302-047	WOODRUFF KEY	1	
* 25	317-804	SPINDLE	1	
* 25	319-655	SPINDLE 5/8"-11UNC	1	FOR USA,CAN
26	301-945	FRINGER	1	
27	949-241	MACHINE SCREW M5X20 (10 PCS.)	1	
28	949-454	SPRING WASHER M5 (10 PCS.)	1	
29	319-656	WHEEL GUARD ASS'Y	1	INCLUD.27,28
* 30	937-817Z	WHEEL WASHER	1	
* 30	937-928Z	WHEEL WASHER (A) FOR D16 HOLE	1	FOR USA,CAN
31	316-821	D. C. WHEELS 115MM A36Q (25 PCS.)	1	
* 32	994-324	WHEEL NUT M14	1	
* 32	937-923P	WHEEL NUT 5/8"-11UNC	1	FOR USA,CAN
33	317-819	GEAR ASS'Y	1	INCLUD.6,17
34	314-428	SLIDE KNOB	1	
35	317-802	HOUSING	1	
36		NAME PLATE	1	
37	995-662	RUBBER RING	1	
38		HITACHI LABEL	1	
39	999-088	CARBON BRUSH (1 PAIR)	2	
40	317-810	BRUSH HOLDER	2	
41	308-536	SPRING	2	
42	317-806	SLIDE BAR	1	
43	314-429	SPRING	1	

STANDARD ACCESSORIES

G 12S2

ITEM NO.	CODE NO.	DESCRIPTION	NO. USED	REMARKS		
	501	938-332Z	WRENCH	1		
*	502	302-142	SIDE HANDLE	1		
*	502	302-739	SIDE HANDLE (C)	1	FOR USA,CAN	

OPTIONAL ACCESSORIES

ITEM NO.	CODE NO.	DESCRIPTION	NO. USED	REMARKS		
*	601	937-825Z	RUBBER PAD	1		
*	601	938-317	RUBBER PAD	1	FOR USA,CAN	
*	602	937-826Z	WASHER NUT	1		
*	602	938-318	WASHER NUT	1	FOR USA,CAN	
*	603	310-338	SUPER WASHER	1	EXCEPT FOR USA,CAN	
	604	314-095	SANDING DISCS 115MM C-P16 (10 PCS.)	1		
	605	314-096	SANDING DISCS 115MM C-P20 (10 PCS.)	1		
	606	314-097	SANDING DISCS 115MM C-P24 (10 PCS.)	1		
	607	314-098	SANDING DISCS 115MM C-P30 (10 PCS.)	1		
	608	314-099	SANDING DISCS 115MM C-P36 (10 PCS.)	1		
	609	314-100	SANDING DISCS 115MM C-P40 (10 PCS.)	1		
	610	314-101	SANDING DISCS 115MM C-P50 (10 PCS.)	1		
	611	314-102	SANDING DISCS 115MM C-P60 (10 PCS.)	1		
	612	314-103	SANDING DISCS 115MM C-P80 (10 PCS.)	1		
	613	314-104	SANDING DISCS 115MM C-P100 (10 PCS.)	1		
	614	314-105	SANDING DISCS 115MM C-P120 (10 PCS.)	1		
*	615	994-312	WHEEL WASHER (C) FOR D20 HOLE	1	FOR USA,CAN	