

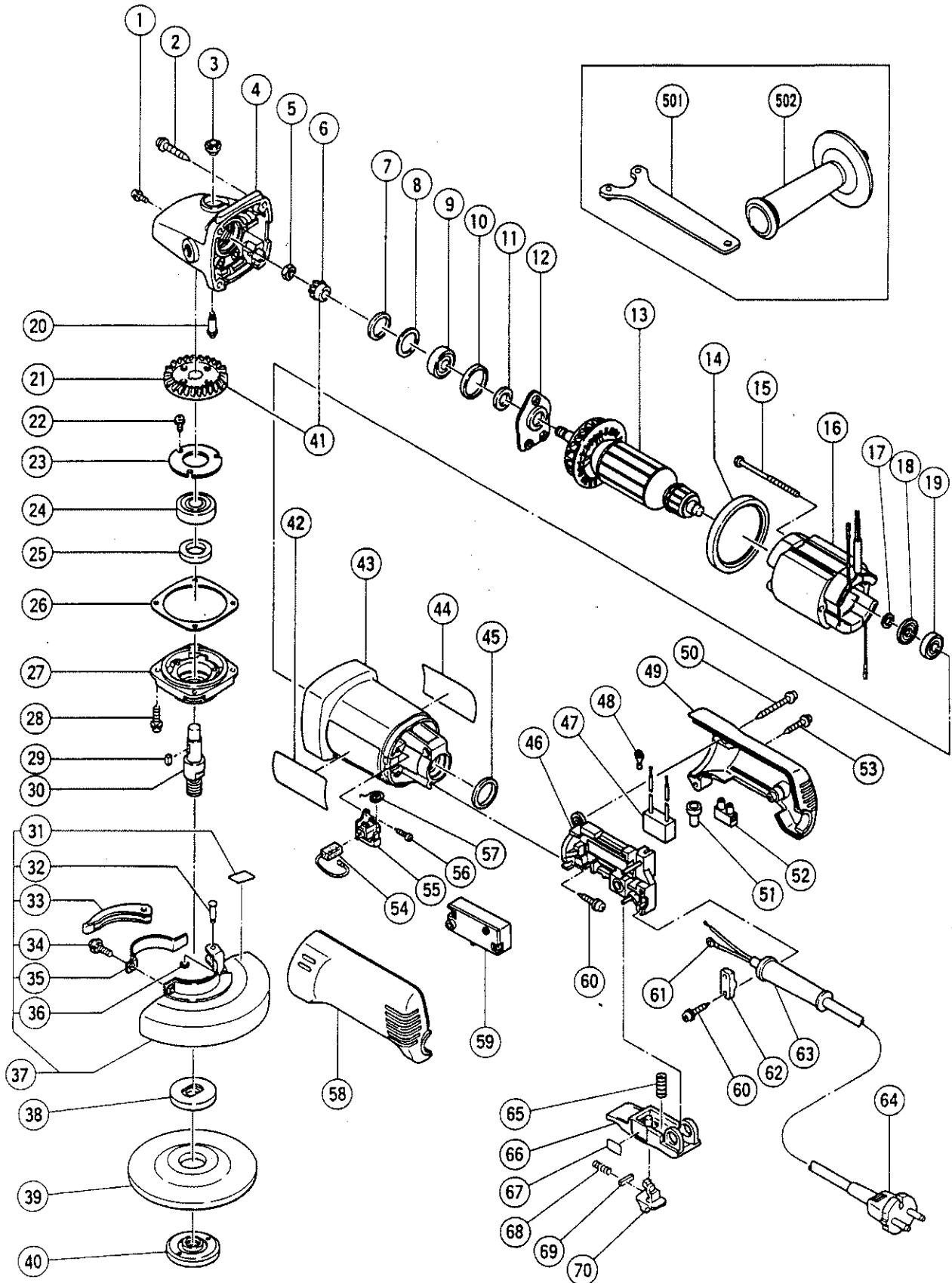
HITACHI

LIST NO. E221

ELECTRIC TOOL PARTS LIST

■ DISC GRINDER
Model G 12SE

1995 · 10 · 10
(E1)



PARTS

G 12SE

ITEM NO.	CODE NO.	DESCRIPTION	NO. USED	REMARKS	
1	303-255	SEAL LOCK SCREW (W/SP. WASHER) M4X10	3		
2	937-807	TAPPING SCREW D5X25	4		
3	301-944	PUSHING BUTTON	1		
4	308-542	GEAR COVER ASS'Y	1	INCLUD.3,20	
5	301-941	SPECIAL NUT M7	1		
6	308-541	PINION	1		
7	308-543	SEAL RING (A)	1		
8	980-888	WASHER (C)	1		
9	629-T12	BALL BEARING 629T12DDC3PS2 - L	1		
10	957-754	RUBBER RING	1		
11	994-320	FELT	1		
12	308-538	BEARING COVER	1		
*	13	360-375C	ARMATURE 110V	1	
*	13	360-375U	ARMATURE ASS'Y 115V	1	INCLUD.9,11,17 - 19
*	13	360-375E	ARMATURE 220V - 240V	1	
14	308-537	FAN GUIDE	1		
15	982-021	HEX. HD. TAPPING SCREW D4X70	2		
*	16	340-339C	STATOR 110V	1	
*	16	340-339D	STATOR 115V	1	
*	16	340-339E	STATOR 220V - 240V	1	
17	311-737	THRUST WASHER	1		
18	311-435	DUST SEAL (A)	1		
19	608-VVM	BALL BEARING 608VVMC2EPS2L	1		
20	301-943	LOCK PIN	1		
21	308-540	GEAR	1		
22	991-207	SEAL LOCK SCREW (W/SP. WASHER) M4X8	3		
23	936-680	BEARING COVER (B)	1		
24	620-1DD	BALL BEARING 6201DDUCMAV2S	1		
25	308-546	FELT PACKING	1		
26	308-547	SEAL PACKING	1		
27	308-545	PACKING GLAND	1		
28	307-046	SEAL LOCK SCREW (W/SP. WASHER) M5X16	4		
29	944-109	FEATHER KEY 3X3X8	1		
*	30	994-301	SPINDLE (A)	1	
*	30	994-302	SPINDLE (B)	1	FOR USA
31	311-492	LABEL	1		
32	311-744	SET PIN	1		
33	311-743	LEVER	1		
34	880-734	MACHINE SCREW (W/WASHERS) M5X25 (BLACK)	1		
35	311-481	SET PIECE (B)	1		
36	874-759	RETAINING RING (E - TYPE) FOR D2.5 SHAFT	1		
37	311-745	WHEEL GUARD ASS'Y	1	INCLUD.31 - 36	
*	38	937-817Z	WHEEL WASHER	1	
*	38	937-922P	WHEEL WASHER (B) FOR D5/8" HOLE	1	FOR USA
39	937-819Z	D. C. WHEELS 115MM A38Q (10 PCS.)	1		
*	40	994-324	WHEEL NUT M14	1	
*	40	937-923P	WHEEL NUT 5/8" - 11UNC	1	FOR USA
41	308-539	GEAR ASS'Y	1	INCLUD.6,21	
*	42		HITACHI LABEL	1	
43	308-559	HOUSING	1		
44		NAME PLATE	1		

*: ALTERNATIVE PARTS

10 - 95

STANDARD ACCESSORIES

G 12SE

ITEM NO.	CODE NO.	DESCRIPTION	NO. USED	REMARKS
501	938-332Z	WRENCH	1	
502	994-322	SIDE HANDLE	1	

OPTIONAL ACCESSORIES

ITEM NO.	CODE NO.	DESCRIPTION	NO. USED	REMARKS
601	999-087	CARBON BRUSH (AUTO STOP TYPE) (1PAIR)	2	
602	937-825Z	RUBBER PAD	1	
602	938-317	RUBBER PAD	1	FOR USA
* 603	937-828Z	WASHER NUT	1	
* 603	938-318	WASHER NUT	1	FOR USA
604	938-000Z	SANDING DISCS 115MM CC16 (10 PCS.)	1	
605	938-001Z	SANDING DISCS 115MM CC20 (10 PCS.)	1	
606	938-002Z	SANDING DISCS 115MM CC24 (10 PCS.)	1	
607	938-003Z	SANDING DISCS 115MM CC30 (10 PCS.)	1	
608	938-004Z	SANDING DISCS 115MM CC36 (10 PCS.)	1	
609	938-005Z	SANDING DISCS 115MM CC40 (10 PCS.)	1	
610	938-006Z	SANDING DISCS 115MM CC50 (10 PCS.)	1	
611	938-007Z	SANDING DISCS 115MM CC60 (10 PCS.)	2	
612	938-008Z	SANDING DISCS 115MM CC80 (10 PCS.)	1	
613	938-009Z	SANDING DISCS 115MM CC100 (10 PCS.)	1	
614	938-010Z	SANDING DISCS 115MM CC120 (10 PCS.)	1	
* 615	994-312	WHEEL WASHER (C) FOR D20 HOLE	1	FOR USA
616	994-313	WHEEL WASHER (C) FOR D22.2 HOLE	1	FOR USA
617	310-338	SUPERWASHER	1	EXCEPT FOR USA

*: ALTERNATIVE PARTS