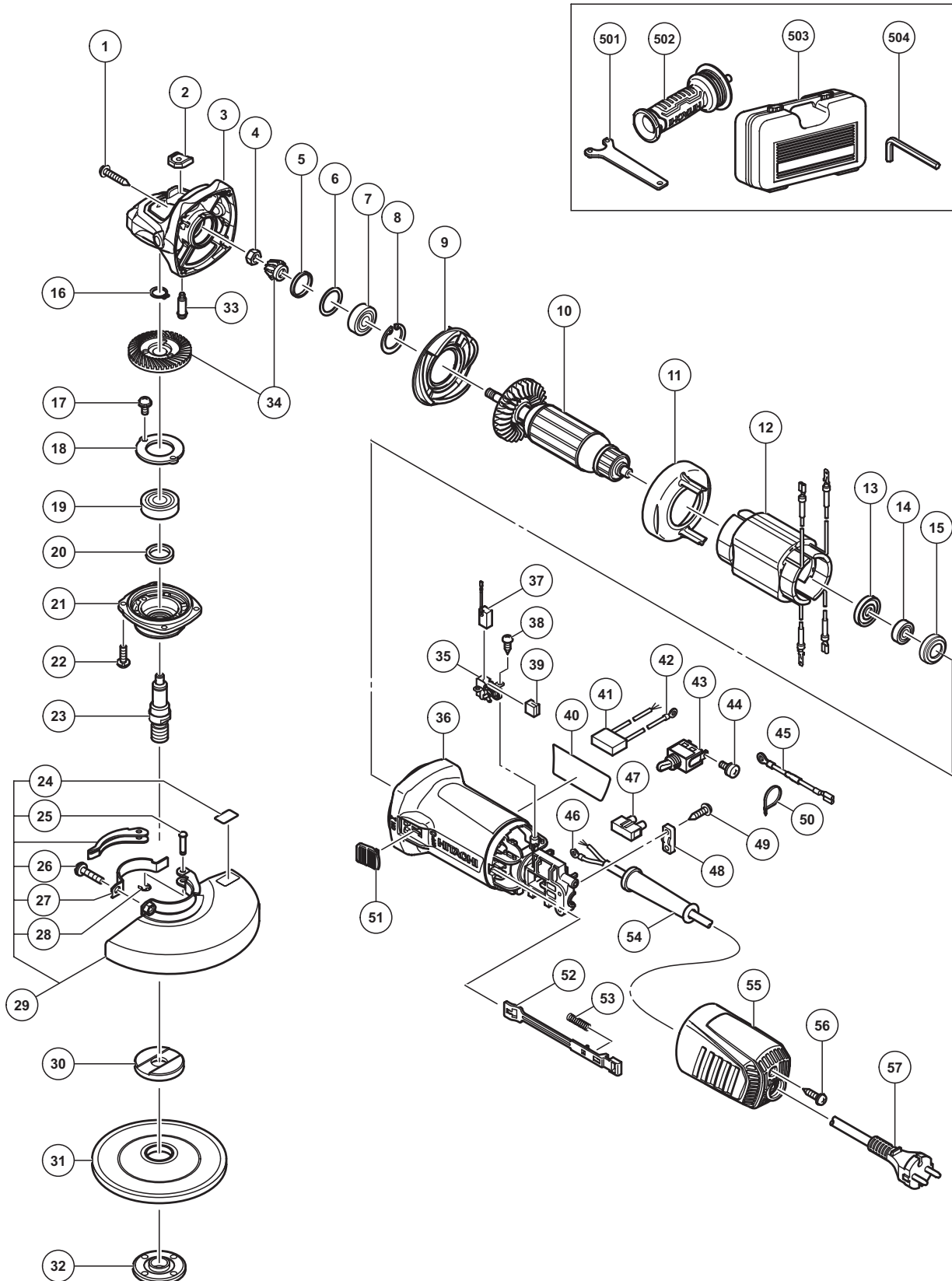


ELECTRIC TOOL PARTS LIST

DISC GRINDER Model G 13SW

2014 · 2 · 7

(E1)



PARTS

G 13SW

ITEM NO.	CODE NO.	DESCRIPTION	NO. USED	REMARKS
1	307028	TAPPING SCREW (W/FLANGE) D4 X 25 (BLACK)	4	
2	336535	PUSHING BUTTON	1	
3	336870	GEAR COVER ASS'Y	1	INCLUD.2,33
4	301941	SPECIAL NUT M7	1	
5	308543	SEAL RING (A)	1	
6	980866	WASHER (C)	1	
7	629VVM	BALL BEARING 629VVC2PS2L	1	
8	939554	RETAINING RING FOR D26 HOLE (10 PCS.)	1	
9	336542	DIFFUSER	1	
* 10	360970C	ARMATURE 110V-120V	1	
* 10	360970D	ARMATURE 220V	1	
* 10	360970E	ARMATURE 230V	1	
* 10	360970F	ARMATURE 240V	1	
11	336530	FAN GUIDE	1	
* 12	340870B	STATOR 110V	1	
* 12	340870D	STATOR 220V	1	
* 12	340870E	STATOR 230V	1	
* 12	340870F	STATOR 240V	1	
13	336536	DUST SEAL	1	
14	336871	BALL BEARING 698SS	1	
15	309929	RUBBER BUSHING	1	
16	939542	RETAINING RING FOR D12 SHAFT (10 PCS.)	1	
17	991207	SEAL LOCK SCREW (W/SP. WASHER) M4 X 8	2	
18	316490	BEARING COVER	1	
19	6201VV	BALL BEARING 6201VVCMP2L	1	
20	301946	FELT PACKING	1	
21	336538	PACKING GLAND	1	
22	307127	SEAL LOCK SCREW (W/SP. WASHER) M4 X 12	4	
23	336539	SPINDLE	1	
24	311492	LABEL	1	
25	311744	SET PIN	1	
26	316107	HEX. SOCKET HD. BOLT (W/WASHERS) M5 X 20	1	
27	311491	SET PIECE (B)	1	
28	874759	RETAINING RING (E-TYPE) FOR D2.5 SHAFT	1	
29	311742	WHEEL GUARD ASS'Y	1	INCLUD.24-28
* 30	937817Z	WHEEL WASHER	1	
* 30	310338	SUPER WASHER	1	FOR AUS,FRG
31	316822	D. C. WHEELS 125MM A36Q (25 PCS.)	1	
32	994324	WHEEL NUT M14	1	
33	301943	LOCK PIN	1	
34	336531	GEAR SET	1	
35	336537	BRUSH HOLDER	2	
36	336541	HOUSING	1	
37	999088	CARBON BRUSH (1 PAIR)	2	
38	328210	TAPPING SCREW D3 X 8	4	
39	336872	CUSHION SPONGE	2	
40		NAME PLATE	1	
* 41	930039	NOISE SUPPRESSOR	1	EXCEPT FOR UAE,INA,IND,SIN,MAL
* 42	980063	TERMINAL	1	FOR NOISE SUPPRESSOR
43	314603	SWITCH (1P SOLDER TYPE)	1	INCLUD.44

STANDARD ACCESSORIES

G 13SW

ITEM NO.	CODE NO.	DESCRIPTION	NO. USED	REMARKS
501	938332Z	WRENCH	1	
502	336865	SIDE HANDLE	1	
* 503	336874	CASE	1	FOR AUS,AUT
504	944458	HEX. BAR WRENCH 4MM	1	

OPTIONAL ACCESSORIES

ITEM NO.	CODE NO.	DESCRIPTION	NO. USED	REMARKS
601	314062	SANDING DISCS 125MM C-P16 (10 PCS.)	1	
602	314063	SANDING DISCS 125MM C-P20 (10 PCS.)	1	
603	314064	SANDING DISCS 125MM C-P24 (10 PCS.)	1	
604	314065	SANDING DISCS 125MM C-P30 (10 PCS.)	1	
605	314066	SANDING DISCS 125MM C-P36 (10 PCS.)	1	
606	314067	SANDING DISCS 125MM C-P40 (10 PCS.)	1	
607	314068	SANDING DISCS 125MM C-P50 (10 PCS.)	1	
608	314069	SANDING DISCS 125MM C-P60 (10 PCS.)	1	
609	314070	SANDING DISCS 125MM C-P80 (10 PCS.)	1	
610	314071	SANDING DISCS 125MM C-P100 (10 PCS.)	1	
611	314072	SANDING DISCS 125MM C-P120 (10 PCS.)	1	
612	937826Z	WASHER NUT	1	
613	937825Z	RUBBER PAD	1	
614	332787	WHEEL GUARD BASE SET	1	WITH BASE FOOT
615	332788	WHEEL GUARD (FOR CUTTING)	1	WITHOUT BASE FOOT