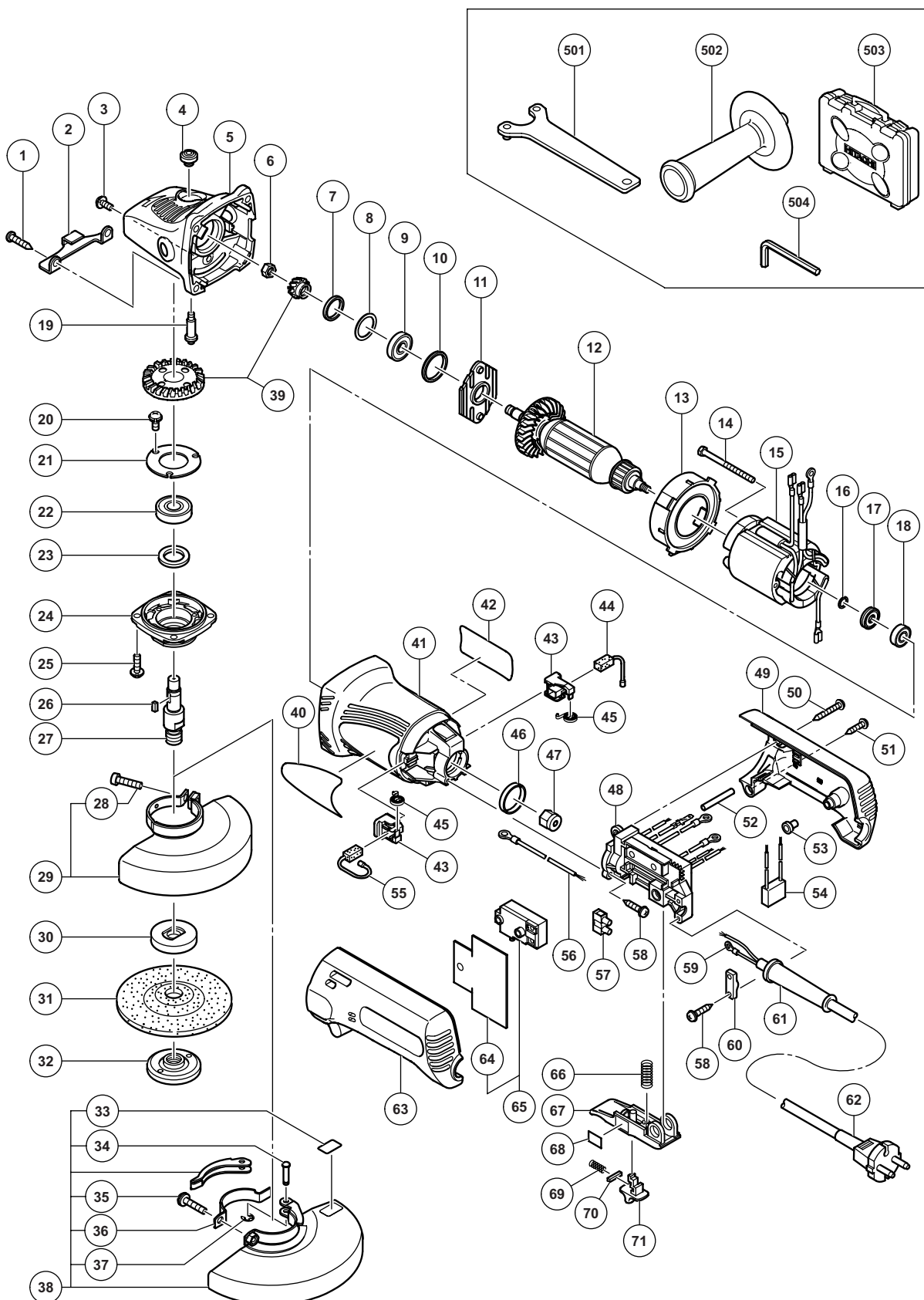


ELECTRIC TOOL PARTS LIST

■ ELECTRONIC DISC GRINDER Model G 13YC2

2012·1·20
(E1)



PARTS

G 13YC2

ITEM NO.	CODE NO.	DESCRIPTION	NO. USED	REMARKS
1	937-807	TAPPING SCREW D5 X 25	4	
2	331-931	STOP PIECE	1	
3	303-255	SEAL LOCK SCREW (W/SP. WASHER) M4 X 10	2	
4	301-944	PUSHING BUTTON	1	
5	321-737	GEAR COVER ASS'Y	1	INCLUD. 4, 19
6	949-558	NUT M8 (10 PCS.)	1	
7	308-543	SEAL RING (A)	1	
8	980-866	WASHER (C)	1	
9	629-T12	BALL BEARING 629T12DDC3PS2-L	1	
10	957-754	RUBBER RING	1	
11	321-734	BEARING COVER	1	
* 12	360-869C	ARMATURE 110 V	1	
* 12	360-869E	ARMATURE 230 V-240 V	1	
13	321-732	FAN GUIDE	1	
14	982-021	HEX. HD. TAPPING SCREW D4 X 70	2	
* 15	340-823C	STATOR 110 V	1	
* 15	340-823E	STATOR 230 V-240 V	1	
16	311-737	THRUST WASHER	1	
17	311-435	DUST SEAL (A)	1	
18	608-VVM	BALL BEARING 608VVC2PS2L	1	
19	301-943	LOCK PIN	1	
20	991-207	SEAL LOCK SCREW (W/SP. WASHER) M4 X 8	3	
21	936-680	BEARING COVER (B)	1	
22	620-1DD	BALL BEARING 6201DDCMPS2L	1	
23	308-546	FELT PACKING	1	
24	308-545	PACKING GLAND	1	
25	307-046	SEAL LOCK SCREW (W/SP. WASHER) M5 X 16	4	
26	944-109	FEATHER KEY 3 X 3 X 8	1	
27	994-301	SPINDLE (A)	1	
* 28	949-757	HEX. SOCKET HD. BOLT M5 X 20 (10 PCS.)	1	EXCEPT FOR AUS, NZL
* 29	333-537	WHEEL GUARD ASS'Y	1	INCLUD. 28 EXCEPT FOR AUS, NZL
30	937-817Z	WHEEL WASHER	1	
31	316-822	D. C. WHEELS 125 MM A36Q (25 PCS.)	1	
32	994-324	WHEEL NUT M14	1	
* 33	311-492	LABEL	1	FOR AUS, NZL
* 34	311-744	SET PIN	1	FOR AUS, NZL
* 35	316-107	HEX. SOCKET HD. BOLT (W/WASHERS) M5 X 20	1	FOR AUS, NZL
* 36	311-491	SET PIECE (B)	1	FOR AUS, NZL
* 37	874-759	RETAINING RING (E-TYPE) FOR D2.5 SHAFT	1	FOR AUS, NZL
* 38	311-742	WHEEL GUARD ASS'Y	1	INCLUD. 33-37 FOR AUS, NZL
39	329-054	GEAR AND PINION SET	1	
40		HITACHI LABEL	1	
41	321-731	HOUSING	1	
42		NAME PLATE	1	
43	317-810	BRUSH HOLDER	2	
44	999-076	CARBON BRUSH (AUTO STOP TYPE) (1 PAIR)	1	
45	308-536	SPRING	2	
46	321-733	RUBBER RING	1	
47	318-721	MAGNET	1	
* 48	334-272	CONTROLLER 110 V	1	

