

HITACHI

LIST NO. 0449

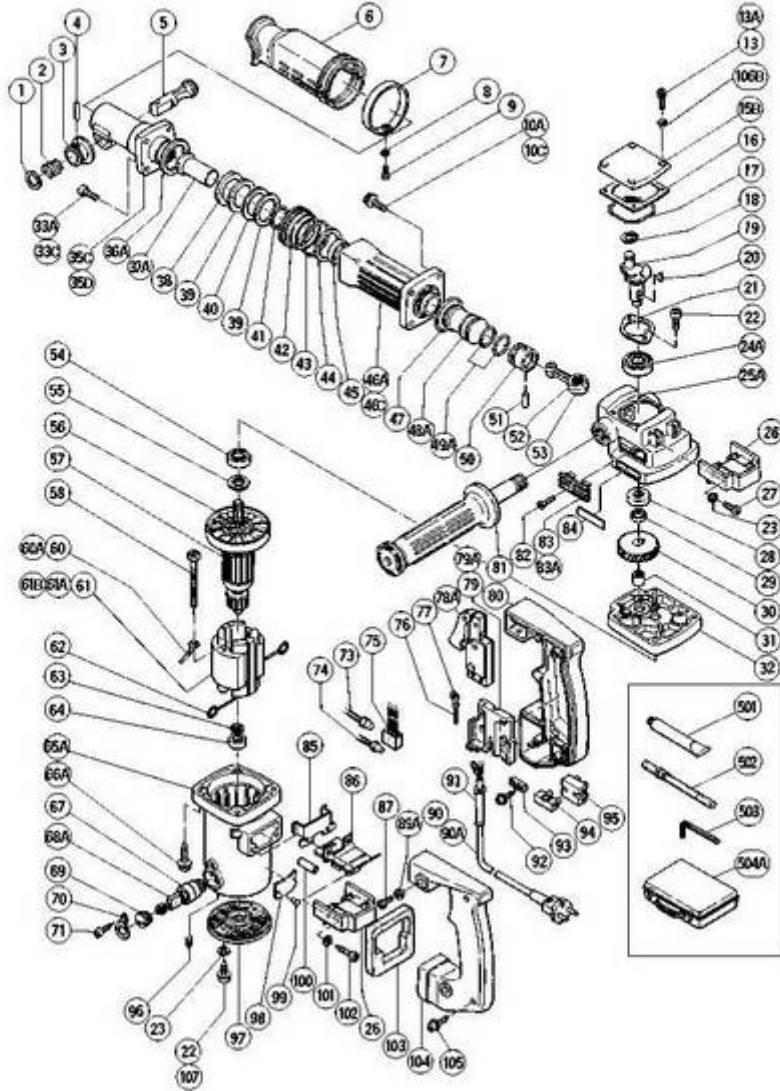
ELECTRIC TOOL PARTS LIST

■ HAMMER

1995·9·8

Model H 45SA

(E5)



H45SA

Pos. Nr.	Art. Nr.	Beschreibung	Stueck	Kommentar	Beschreibung
1	983-277	HALTESCHEIBE H45SA	1		STOP WASHER
2	981-937	ANSCHLAGFEDER DH38YB1/DH40FA u a	1		STOPPER SPRING
3	983-241	KNAUF (A) DH38YB1/YF/H45SA	1		KNOB (A)
4	943-364	NADELROLLE D4X20 DH40FA/FB/50SA1	1		NEEDLE ROLLER D4X20
5	983-240	ANSCHLAGHEBEL DH38YB1/H45SA	1		STOP LEVER
6	980-714	GUMMIABDECKUNG H45SA	1		RUBBER COVER
7	980-748	BEFESTIGUNGSSCHELLE H45SA	1		BAND
8	949-453	FEDERSCHEIBE M4 (10ST)	1		SPRING WASHER M4 (10 PCS.)
9	949-214	+KOPFSCHRAUBE M4X6 (10ST)	1		MACHINE SCREW M4X6 (10 PCS.)
10A	949-652	INBUSSCHRAUBE M6X25 (10ST)	4	TILL 2.1984	HEX. SOCKET HD. BOLT M6X25 (10 PCS.)
10C	991-712	INBUSSCHRAUBE M6X25 M FLANSCH	4	SINCE 3.1984	HEX. SOCKET HD. BOLT (W/FLANGE) M6X25
13	949-217	+KOPFSCHRAUBE M4X12 (10ST)	4	TILL 12.1983	MACHINE SCREW M4X12 (10 PCS.)
13A	983-162	INBUSSCHRAUBE M4X12 SELBSTS	4	SINCE 1.1984	SEAL LOCK HEX. SOCKET HD. BOLT M4X12
15B	991-716	KURBELGEHAUSEDECKEL DH38YB1 u a	1		CRANK COVER
16	980-749	DICHTUNG H45SA/DH38YB1 u a	1		SEAL PACKING
17	980-744	O-RING (S-55) DH25V/DH28Y u a	1		O-RING (S-55)
18	939-542	SICHERUNGSRING D12 (10ST)	1		RETAINING RING FOR D12 SHAFT (10 PCS.)
19	981-993Z	KURBELWELLE H45SA	1		CRANK SHAFT
20	932-815	SCHEIBENKEIL 3X3 DH50SA/H45SA	1		WOODRUFF KEY 3X13
21	981-847	LAGERDECKEL DH38YB1/H45SA	1		BEARING COVER
22	949-665	INBUSSCHRAUBE M5X14 (10ST)	4	TILL 9.1987 FOR BEARING COVER, TAIL COVER	HEX. SOCKET HD. BOLT M5X14 (10 PCS.)
22	949-665	INBUSSCHRAUBE M5X14 (10ST)	2	SINCE 10.1987 FOR BEARING COVER	HEX. SOCKET HD. BOLT M5X14 (10 PCS.)
23	949-454	FEDERSCHEIBE M5 (10ST)	2	TILL 9.1987	SPRING WASHER M5 (10 PCS.)
24A	620-3DD	KUGELLAGER 6203 DD	1		BALL BEARING 6203DDCMLS2L
25A	983-287	KURBELGEHAUSE KOMPL H45SA	1	INCLUD.83A	CRANK CASE ASS'Y
26	980-727	HANDGRIFFGUMMI DH50SA1/H55SA u a	2		HANDLE RUBBER

27	949-239	+KOPFSCHRAUBE M5X16 (10ST)	2		MACHINE SCREW M5X16 (10 PCS.)
28	971-745	OLDICHTUNG (A) DH38YB1/H45SA	1		OIL SEAL (A)
29	980-706	DISTANZBUCHSE DH38YB1/YF/H41SA	1		COLLAR
30	981-995Z	ERSTES ZAHNRAD H45SA	1		FIRST GEAR
31	946-408	NADELLAGER BK1210 H45SA	1		NEEDLE BEARING (NTN BK1210)
32	981-991Z	GETRIEBEBEDECKEL H45SA	1		GEAR COVER
33A	981-942	INBUSSCHRAUBE M6X25 SELBSTSICH	4	TILL 7.1984	SEAL LOCK HEX. SOCKET HD. BOLT M6X25
33C	993-040	INBUSSCHRAUBE M7X25 M FLANSCH SELBSTSICH	4	SINCE 8.1984	NYLOCK HIGH TENSION BOLT M7X25
35C	981-203Z	VORDERDECKEL H45SA	1	INCLUD.36A TILL 7.1984	FRONT COVER ASS'Y
35D	983-284	VORDERDECKEL KOMPL H45SA (DISCON)	1	INCLUD.36A SINCE 8.1984	FRONT COVER ASS'Y
36A	983-288	UNTERLEGSCHIEBE H45SA	1		WASHER
37A	983-253	ZWEITHAMMER KOMPL H45SA Nicht mehr liefe	1	INCLUD.38	SECOND HAMMER ASS'Y
38	983-237	DAMPFERSCHIEBE H45SA Nicht mehr lieferba	1		DAMPER WASHER
39	983-235	DAMPFER H41SA/H45MA/SA	2		DAMPER
40	983-236	UNTERLEGSCHIEBE H41SA/H45MA/SA	1		WASHER
41	983-234	O-RING (A) H41SA/H45SA	2		O-RING (A)
42	983-232	HAMMERHALTER H45SA	1	TILL 12.1985	HAMMER HOLDER
43	980-717	O-RING (S-38) H65SD/H90SC/SE H30PV	1	TILL 12.1985	O-RING (S-38)
44	983-233	GUMMIRING H45SA	1	TILL 12.1985	RUBBER RING
45	980-713	VENTILBAND H45SA	1	TILL 12.1985	VALVE BAND
46A	981-996Z	ZYLINDERGEHAUSE BIS 7/1984**DEL**	1	INCLUD.45 TILL 7.1984	CYLINDER CASE ASS'Y
46C	982-008	ZYLINDERGEHAUSE KOMPL H45SA Nicht mehr l	1	INCLUD.41 SINCE 8.1984	CYLINDER CASE ASS'Y
47	980-715	O-RING (S-48) H41SA/H45MA/SA H30PV	1		O-RING (S-48)
48A	991-706	ANSCHLAGER H45SA	1		STRIKER
49A	986-104	O-RING DH28/40/50 (HAMMER)	2		O-RING
50	981-885	KOLBEN DH38YB1/DH40FA/FB u a	1		PISTON
51	980-708	KOLBENSTIFT DH28Y/DH38YB/DH40MR	1		PISTON PIN
52	980-756	NADELLAGER (NSK AJ50 1203) DH28Y/DH40MA/	1		NEEDLE BEARING (NSK AJ50 1203)
53	980-707	PLEUEL KOMPL DH28Y/DH38YB1 u a (INKL	1	INCLUD.52	CONNECTING ROD ASS'Y

		NA			
54	620-2VV	KUGELLAGER 6202 VV	1		BALL BEARING 6202VVCMS2L
55	980-700	STAUBSCHEIBE (B) DH40FA/FB/MA/MB	1		DUST WASHER (B)
56	980-740	VENTILATOR DH28Y/DH38YB1/H45SA	1		FAN
57	981-971U		1	INCLUD.54-56,63,64	ARMATURE ASS'Y 110V-115V
57	981-971D		1	INCLUD.56	ARMATURE ASS'Y 120V-127V
57	981-971E	ANKER 220V-230V DH38YB/H45SA	1	INCLUD.56	ARMATURE ASS'Y 220V-230V
57	981-971F		1	INCLUD.56	ARMATURE ASS'Y 240V
58	960-251	SCHNEIDSCHRAUBE D5X65 (DIV TYPEN)	2		HEX. HD. TAPPING SCREW D5X65
60	971-776	INNENVERDRAHTUNG DH25V/DH28Y u a	1	FOR SUI	INTERNAL WIRE
60A	986-277	VERBINDERKABEL DH20V/DH25V u a H70SA	1		INTERNAL WIRE
61	981-970D		1	INCLUD.62	STATOR ASS'Y 120V-127V
61A	340-147C		1	INCLUD.62	STATOR ASS'Y 110V-115V
61A	340-147E		1	INCLUD.62	STATOR ASS'Y 220V-230V
61A	340-147F		1	INCLUD.62	STATOR ASS'Y 240V
61A	340-147J		1	INCLUD.62 FOR GBR	STATOR ASS'Y 110V
61B	340-147G	STATOR 220V-230V DH38YB/H45SA	1	INCLUD.62 FOR NZL,SAF,ITA,FRG,FRA,HOL,	STATOR ASS'Y 230V
			0	DEN,FIN,SWE,AUT,SUI,GBR	
61B	340-147H		1	INCLUD.62 FOR AUS	STATOR ASS'Y 240V
62	930-703	KOHLLENHALTERKLEMME DH28Y u a H30PV/VB16	2		BRUSH TERMINAL
63	980-698	STAUBSCHEIBE (A) DH38YB1/DH28Y	1		DUST WASHER (A)
64	608-VVM	KUGELLAGER 608 VVM	1		BALL BEARING 608VVC2PS2L
65A	983-286	GEHAUSE KOMPL (B) H45SA	1	INCLUD.67,96,107	HOUSING ASS'Y (B)
66A	982-411	INBUSSCHRAUBE M6X50 M FLANSCH	4		HEX. SOCKET HD. BOLT (W/FLANGE) M6X50
67	981-586	KOHLLENHALTER C6U/7U/CR10V u a	2		BRUSH HOLDER
68A	999-073	KOHLEBURSTEN SELBSTABSCH (PAAR)	2		CARBON BRUSH (AUTO STOP TYPE) (1 PAIR)
69	961-781	KOHLLENKAPPE C6U/CR12V u a	2		BRUSH CAP
70	981-959	KAPPENDECKEL DH28Y/DH38YB1 u a	2		CAP COVER
71	958-715	SCHNEIDSCHRAUBE D4X10	2		TAPPING SCREW D4X10
73	959-141	VERBINDER 50092 (10ST) DIV TYPEN	2	FOR NZL,GBR,SAF,ITA,FRG,FRA,HOL,DEN,SWE,	CONNECTOR 50092 (10 PCS.)

			0	AUT,SUI	
74	959-140	VERBINDER 50091 (10ST) DIV TYPEN	1		CONNECTOR 50091 (10 PCS.)
75	994-273	KONDENSATOR DIV TYPEN	1		NOISE SUPPRESSOR
76	983-276Z	VERBINDERKABEL DH50SA1/H55SA	1		INTERNAL WIRE
77	959-144	KABELSCHUH 50051 (10ST) DIV TYPEN	1	FOR SYR,KUW,NGU	TERMINAL 50051 (10 PCS.)
78A	992-891	SCHALTER DIV BOHR- MEISSELHAMMER	1		SWITCH (A) (1P SCREW TYPE) W/O LOCK
78A	981-533Z	SCHALTER C8U/C9U	1	FOR AUS	SWITCH (2P PILLAR TYPE) W/O LOCK
78A	995-398	SCHALTER (A) H45SA/H55SA	1	FOR FRG	SWITCH (A) (1P SCREW TYPE) W/LOCK
79	981-869	HALTERUNG DH28Y/H55SA	1	TILL 3.1988	SUPPORT
79	981-986Z		1	FOR AUS	SUPPORT (A)
79A	990-082		1	SINCE 4.1988	SUPPORT (E)
80	983-272	HANDGRIFF (A) DH50SA1/H45SA u a	1		HANDLE (A)
81	956-259	SEITENGRIF DH50SA/SA1/H45SA	1		SIDE HANDLE
82	949-322	SENKKOPFSCHRAUBE M4X10 (10ST)	2	TILL 7.1987	FLAT HD. SCREW M4X10 (10 PCS.)
83	980-735	LUFTFUHRUNG DH38YB/DH50SA/H45SA	2	TILL 7.1987	WIND GUIDE
83A	991-713	LUFTFUHRUNG (B) DH38YB1 u a	2	SINCE 8.1987	WIND GUIDE (B)
84	957-561		1		HITACHI LABEL
85	980-750	FUHRUNGSPLATTE DH50SA1/SB u a	2		GUIDE PLATE
86	985-469	KABELHALTER H55SA/H65SD/DH50SA1	1		INTERNAL WIRE HOLDER
87	949-765	INBUSSCHRAUBE M5X12 (10ST)	4		HEX. SOCKET HD. BOLT M5X12 (10 PCS.)
89A	991-711	DISTANZBUCHSE (B) DH38YB1/YF u a H45MR	4		DISTANCE PIECE (B)
90	500-239Z		1	(CORD ARMOR D10.7)	CORD
90	500-235Z	ANSCHLUSSKABEL MIT STECKER BITTE 714500	1	(CORD ARMOR D8.2) FOR INA,SUR	CORD
90	500-249Z		1	(CORD ARMOR D8.2) FOR USA,CAN	CORD
90	500-390Z		1	(CORD ARMOR D10.7) FOR DEN,FIN,SWE,AUT,	CORD
			0	ITA,FRG,FRA,HOL	
90	500-391Z		1	(CORD ARMOR D10.7) FOR SUI	CORD
90	500-394Z		1	(CORD ARMOR D10.7) FOR SYR	CORD
90	500-406Z		1	(CORD ARMOR D8.2) FOR GBR	CORD
	500-				

90	408Z		1	(CORD ARMOR D10.7) FOR AUS,NZL,NGU	CORD
90A	500-424Z		1	(CORD ARMOR D8.2) FOR SIN,KUW	CORD
91	958-049	KABELKNICKSCHUTZ D8 2 DIV TYPEN	1		CORD ARMOR D8.2
91	940-778	KABELKNICKSCHUTZ D10 7 DIV TYPEN	1		CORD ARMOR D10.7
92	930-446	SCHNEIDSCHRAUBE D4X16 M U-SCHEIBE	2		TAPPING SCREW (W/WASHER) D4X16
93	960-266	KABELKLEMME DIV TYPEN	1		CORD CLIP
93	981-987Z		1	FOR SUI	CORD CLIP
94	938-307	SCHRAUBKLEMME 1-REIHIG DIV TYPEN	1	FOR GBR,ITA,FRG,FRA,HOL,DEN,FIN,SWE,AUT,	PILLAR TERMINAL
			0	SUI	
95	958-308Z	SCHRAUBKLEMME 2-REIHIG DIV TYPEN	1	FOR FIN	PILLAR TERMINAL (A)
96	962-782	INBUSSCHRAUBE M5X6 CM6/D13/u a	2		HEX. SOCKET SET SCREW M5X6
97	302-323	ABDECKUNG DH28Y/DH38YB1/YF/H45SA	1		TAIL COVER (B)
98			1		NAME PLATE
99	949-510	NIETE D 2.5 X 4.8 (10ST)	2		RIVET D2.5X4.8 (10 PCS.)
100			2		VINYL TUBE (I.D.9XT0.5X20)
101	949-424	UNTERLEGSCHNEIBE M5 (10ST)	2		WASHER M5 (10 PCS.)
102	937-807	SCHNEIDSCHRAUBE D5X25	2		TAPPING SCREW D5X25
103	980-751	GRIFFDICHTUNG DH50SA1/H65SB/SD	1		HANDLE PACKING
104	983-273	HANDGRIFF (B) DH50SA1/H45SA u a	1		HANDLE (B)
105	956-636		2		TAPPING SCREW (W/WASHER) D4X25
106B	990-146	ABSTANDSSTUCK (A) DH50SA/SB	4	TILL 1.1988	DISTANCE PIECE (A)
107	985-480	SCHNEIDSCHRAUBE D5X20 M U-SCHEIBE	2	SINCE 10.1987	TAPPING SCREW (W/WASHER) D5X20
501	981-840	HAMMERFETT (A) 30G	1		GREASE (A) FOR HAMMER.HAMMER DRILL (30G)
502	981-922	SPITZMEISSEL 280MM 17MM 6-KANT Neue Art	1		BULL POINT 280MM (ROUND SHANK TYPE)
503	944-459	INBUSSCHLUSSEL D5(M6)	1		HEX. BAR WRENCH 5MM
504A	314-172	TRANSPORTKOFFER H45SA	1		CASE (STEEL)