

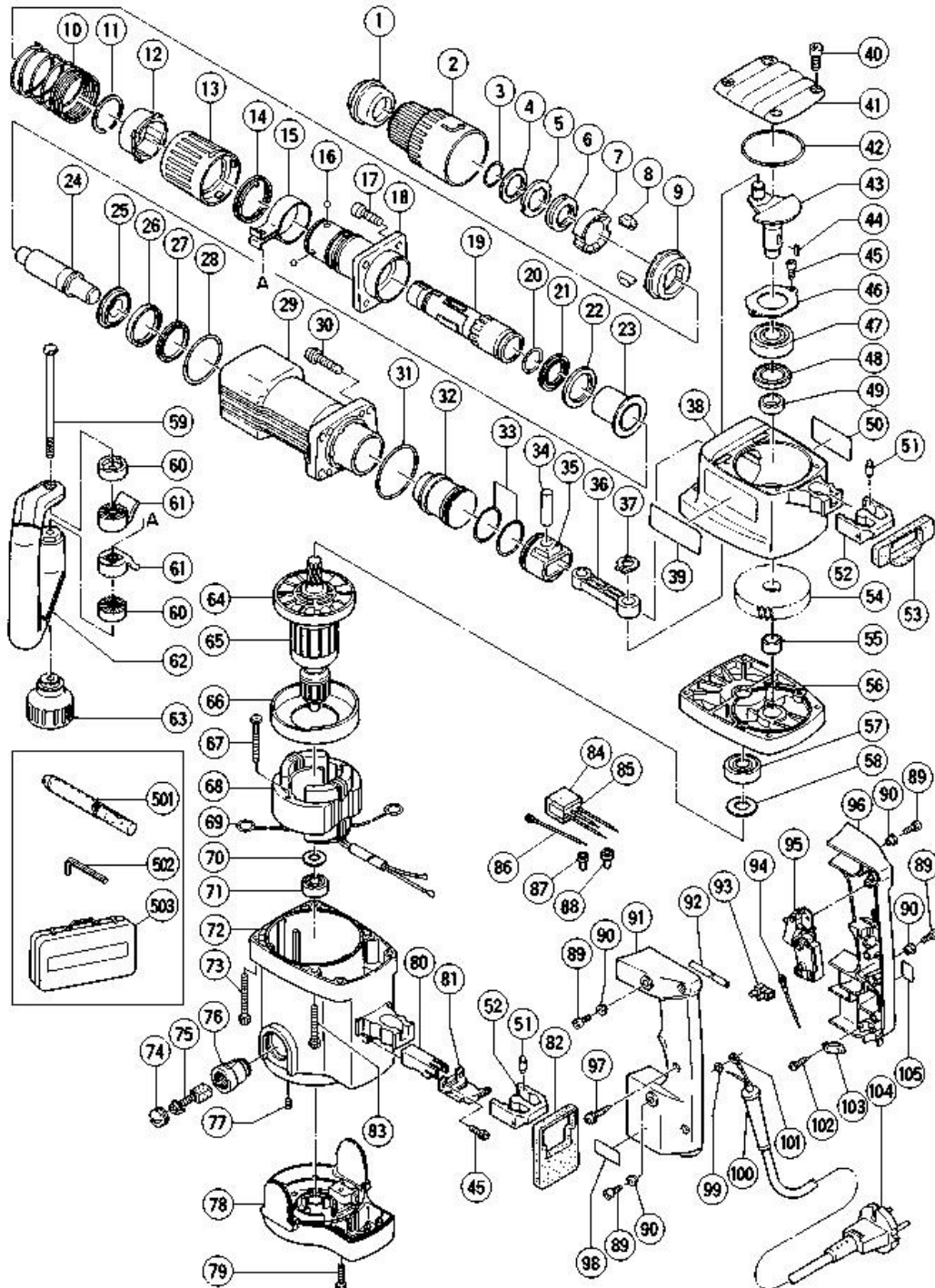
HITACHI

LIST NO. E448

ELECTRIC TOOL PARTS LIST

■ **HAMMER**
Model H 60MA

1998·10·20
(E1)



H60MA

Pos. Nr.	Art. Nr.	Beschreibung	Stueck	Kommentar	Beschreibung
1	315-529	VORDERKAPPE H45MA/H60MA/MB	1		FRONT CAP
2	315-506	GRIFF (A) H45MA/H60MA/MB	1		GRIP (A)
3	315-512	RING H45MA/H60MA/MB	1		RING
4	315-507	SCHEIBE (A) H45MA/H60MA/MB	1		WASHER (D)
5	315-508	SCHEIBE (C) H45MA/H60MA/MB	1		WASHER (C)
6	315-509	SICHERUNGSDÄMPFER H45MA/H60MA/MB	1		RETAINER DAMPER
7	315-510	NADELHALTER (A) H45MA/H60MA/MB	1		NEEDLE HOLDER (A)
8	315-514	NADEL H45MA/H60MA/MB	2		NEEDLE
9	315-511	NADELHALTER (B) H45MA/H60MA/MB	1		NEEDLE HOLDER (B)
10	315-515	FEDER (A) H45MA/H60MA/MB	1		SPRING (A)
11	317-088	SICHERUNGSRING D42 H60MA/MB	1		RETAINING RING D42
12	315-518	KUGELHALTER H45MA/H60MA/MB	1		BALL HOLDER
13	315-513	GRIFF (B) H45MA/H60MA/MB	1		GRIP (B)
14	315-516	FEDER (B) H45MA/H60MA/MB	1		SPRING (B)
15	317-104	BAND H60MA/MB	1		BAND
16	959-150	"STAHLKUGEL D6,35 (10ST)"	4		STEEL BALL D6.35 (10 PCS)
17	985-479	INBUSSCHRAUBE M8X25 SELBSTSICH.	4		SEAL LOCK HEX. SOCKET HD. BOLT M8X25
18	317-089	VORDERDECKEL H60MA/MB	1		FRONT COVER
19	315-519	WERKZEUGAUFNAHME H45MA/H60MA/MB	1		RETAINER SLEEVE
20	872-470	O-RING (S-26) DH20V/DH22VD u.a.	1		O-RING (S-26)
21	315-521	X-RING H45MA/H60MA/MB	1		X-RING

22	317-094	DÄMPFER (B) H60MA/MB	1		DAMPER (B)
23	317-092	HAMMERHALTER (B) H60MA/MB	1		HAMMER HOLDER (B)
24	317-090	ZWEITHAMMER H60MA/MB	1		SECOND HAMMER
25	317-091	HAMMERHALTER (A) H60MA/MB	1		HAMMER HOLDER (A)
26	317-093	DÄMPFER H60MA/MB	1		DAMPER
27	317-095	DÄMPFERSCHEIBE H60MA/MB	1		DAMPER WASHER
28	317-119	O-RING (S-56) H60MA/MB	1		O-RING (S-56)
29	317-085	ZYLINDERGEHÄUSE H60MA/MB	1		CYLINDER CASE
30	990-083	INBUSSCHRAUBE M8X35 M.FLANSCH	4		HEX. SOCKET HD. BOLT (W/FLANGE) M8X35
31	956-996	O-RING (1AS-60) DIV.TYPEN	1		O-RING (1AS-60)
32	301-510	ANSCHLÄGER H60MA/MB	1		STRIKER
33	985-454	O-RING (A)(FPM810) H55SA/H60MA/MB	2		O-RING (A) (FPM810)
34	301-509	KOLBENSTIFT H60MA/MB	1		PISTON PIN
35	317-084	KOLBEN H60MA/MB	1		PISTON
36	317-082	PLEUEL H60MA/MB	1		CONNECTING ROD
37	939-543	SICHERUNGSRING D14 (10ST)	1		RETAINING RING FOR D14 SHAFT (10 PCS.)
38	317-083	KURBELGEHÄUSE H60MA/MB	1		CRANK CASE
39			1		HITACHI LABEL
40	990-079	INBUSSCHRAUBE M5X16 SELBSTSICH.	4		SEAL LOCK HEX. SOCKET HD. BOLT M5X16
41	317-079	KURBELGEHÄUSEDECKEL H60MA/MB	1		CRANK COV.
42	993-	O-RING H60MA/MB/H90SC/SE	1		O-RING

	195				
43	317-078	KURBELWELLE H60MA/MB	1		CRANK SHAFT
44	940-533	KEIL 3X3X10 G13SC/G15SA u.a.	1		FEATHER KE 3X3X10
45	984-509	INBUSSCHRAUBE M5X14 SELBSTSICH.	4		SEAL LOCK HEX. SOCKET HD. BOLT M5X14
46	985-443	LAGERABDECKUNG H55SA/H60MA/MB	1		BEARING COVER
47	620-4DD	KUGELLAGER 6204 DD	1		BALL BEARING 6204DDCMPS
48	995-403	ÖLDICHTUNG H60MA/MB	1		OIL SEAL
49	995-402	DISTANZRING (C) H60MA/MB	1		DISTANCE RING (C)
50			1		NAME PLATE
51	310-124	HANDGRIFFDÄMPFER H41SA/H45MA u.a.	8		HANDLE DAMPER
52	310-123	DÄMPFERBEFESTIGUNG H41SA/H45MA ua	2		TRANSATOR UNIT
53	317-101	HANDGRIFFDICHTUNG (A) H60MA/MB	1		HANDLE PACKING (A)
54	317-080	ERSTES ZAHNRAD H60MA/MB	1		FIRST GEAR
55	985-442	NADELLAGER (A) BK1512	1		NEEDLE BEARING (A) (BK1512)
56	317-081	GETRIEBEDECKEL KOMPLETT H60MA/MB	1	INCLUD.55	GEAR COVER ASS'Y
57	620-3DD	KUGELLAGER 6203 DD	1		BALL BEARING 6203DDCMPS
58	992-841	LAGERSCHEIBE H60MA/MB/H90SC/SE	1		BEARING WASHER
59	317-107	SCHRAUBE M8 H60MA/MB	1		BOLT M8
60	317-106	HANDGRIFFHALTER (B) H60MA/MB	2		HANDLE HOLDER (B)
61	317-105	HANDGRIFFHALTER (A) H60MA/MB	2		HANDLE HOLDER (A)
62	317-103	SEITENGRIFF KOMPLETT H60MA/MB	1	INCLUD.15,59-61,63	SIDE HANDL ASS'Y
63	317-108	GRIFF H60MA/MB	1		GRIP

64	996-370	LÜFTERFLÜGEL H60MA/MB/H65SB u.a.	1		FAN
65	360-486U		1	INCLUD.57,58,64,70,71	ARMATURE ASS'Y 110V- 115V
65	360-486E	ANKER 230V H60MA/MB	1	INCLUD.64	ARMATURE ASS'Y 230V
65	360-486F		1	INCLUD.64	ARMATURE ASS'Y 240V
66	305-610	LUFTFÜHRUNG H60MA/MB/H90SC/SE	1		FAN GUIDE
67	953-121	SECHSKANTSCHNEIDSCHRAUBE D5X50	2		HEX. HD. TAPPING SCREW D5X50
68	340-430C		1	INCLUD.69	STATOR ASS 110V
68	340-430G		1	INCLUD.69	STATOR ASS 115V
68	340-430E	STATOR 230V H60MA	1	INCLUD.69	STATOR ASS 230V
68	340-430F		1	INCLUD.69	STATOR ASS 240V
69	945-932	KOHLLENHALTERKLEMME H60MA/MB u.a.	2		BRUSH TERMINAL
70	944-954	LAGERSCHEIBE F30A/H65SB/SD u.a.	1		BEARING WASHER
71	620-1DD	KUGELLAGER 6201 DD	1		BALL BEARING 6201DDCMPS
72	317-128	MOTORGEHÄUSE KOMPLETT H60MA	1	INCLUD.76,77	HOUSING ASS'Y
73	301-567	INBUSSCHRAUBE M6X55 SELBSTSICH.	4		SEAL LOCK HEX. SOCKE' HD. BOLT M6X55
74	940-540	KOHLLENKAPPE C13U/M12V/DIV.TYPEN	2		BRUSH CAP
75	999-074	KOHLLEBÜRSTEN SELBSTABSCH. (PAAR)	2		CARBON BRUSH (AUT STOP TYPE) (PAIR)
76	956-984	KOHLLENHALTER H60MA/MB/H65SB/SD	2		BRUSH HOLDER
77	938-477	INBUSSTIFTSCHRAUBE M5X8	2		HEX. SOCKE' SET SCREW M5X8
78	317-086	GEHÄUSEABDECKUNG H60MA/MB	1		TAIL COVER

79	317-245	INBUSSCHRAUBE M5X22 SELBSTSICH.	2		SEAL LOCK HEX. SOCKE' HD. BOLT M5X22
80	317-099	BUCHSE H60MA/MB	1		SLEEVE
81	310-424	KABELHALTER H41SA/H45MA/H60MA	1	EXCEPT USA	INTERNAL WIRE HOLDE
81	980-754	KABELHALTER H41SA/H60MB	1	FOR USA	INTERNAL WIRE HOLDE
82	317-102	HANDGRIFFDICHTUNG (B) H60MA/MB	1		HANDLE PACKING (B)
83	986-940	INBUSSCHRAUBE M6X45 SELBSTSICH.	2		SEAL LOCK HEX. SOCKE' HD. BOLT M6X45
84	930-153	POLSTER (B) SELBSTKLEB. DIV.TYPEN	1	EXCEPT USA	SUPPORT (B)
85	994-273	KONDENSATOR DIV.TYPEN	1	EXCEPT USA	NOISE SUPPRESSOR
86	990-861	VERBINDERKABEL H41SA u.a.	1	EXCEPT USA	INTERNAL WIRE
87	959-140	VERBINDER 50091 (10ST) DIV.TYPEN	1	EXCEPT USA	CONNECTOR 50091 (10 PCS)
88	959-141	VERBINDER 50092 (10ST) DIV.TYPEN	1	EXCEPT USA	CONNECTOR 50092 (10 PCS)
89	991-690	INBUSSCHRAUBE M5X12 SELBSTSICH.	4		SEAL LOCK HEX. SOCKE' HD. BOLT M5X12
90	991-711	DISTANZBUCHSE (B) DH38YB1/YF u.a.	4		DISTANCE PIECE (B)
91	317-097	HANDGRIFF (B) H60MA/MB	1		HANDLE (B)
92			2		VINYL TUBE (I.D.7XT0.5X3
			0	FOR USA	
93	938-307	SCHRAUBKLEMME 1-REIHIG DIV.TYPEN	1		PILLAR TERMINAL
94	981-974	VERBINDERKABEL DH28Y/H41SA/	1	EXCEPT USA	INTERNAL WIRE
95	306-143	SCHALTER (B) H45MA/H60MA/MB u.a.	1		SWITCH (B) (SCREW TYPE W/LOCK
96	317-096	HANDGRIFF (A) H60MA/MB	1		HANDLE (A)
					TAPPING

97	307-028	SCHNEIDSCHRAUBE D4X25 MIT FLANSCH	3		SCREW (W/FLANGE) D4X25 (BLACK)
98			1		SDS-MAX LABEL
99	949-423	UNTERLEGSCHIEBE M4 (10ST)	1	EXCEPT USA	WASHER M4 (10 PCS.)
100	953-327	KABELKNICKSCHUTZ D8.8 DIV.TYPEN	1		CORD ARMO D8.8
100	938-051	KABELKNICKSCHUTZ D10.1 DIV.TYPEN	1		CORD ARMO D10.1
101	992-810	KABELSCHUH M4 (ISO-ROT)	1		TERMINAL
101	980-063	KABELSCHUH C7U/CJ65V2/H70SA/G13V	1	FOR GBR (110V),SAF	TERMINAL
102	984-750	SCHNEIDSCHRAUBE D4X16 MIT FLANSCH	2		TAPPING SCREW (W/FLANGE) D4X16
103	960-266	KABELKLEMME DIV.TYPEN	1		CORD CLIP
103	981-987Z		1	FOR SUI	CORD CLIP
104	500-390Z	ANSCHLUSSKABEL MIT STECKER	1	(CORD ARMOR D10.1)	CORD
104	500-454Z		1	(CORD ARMOR D8.8) FOR GBR (110V)	CORD
104	500-446Z		1	(CORD ARMOR D10.1) FOR GBR (230V)	CORD
104	500-408Z		1	(CORD ARMOR D10.1) FOR AUS	CORD
104	500-391Z		1	(CORD ARMOR D10.1) FOR SUI	CORD
104	500-434Z		1	(CORD ARMOR D8.8) FOR USA	CORD
105			1		LABEL
501	313-471		1		BULL POINT (SDS MAX) 280L
502	872-422	INBUSSCHLÜSSEL D6(M8)	1		HEX. BAR WRENCH 6M
503	317-125	TRANSPORTKOFFER H60MA/MB	1		CASE (STEEL