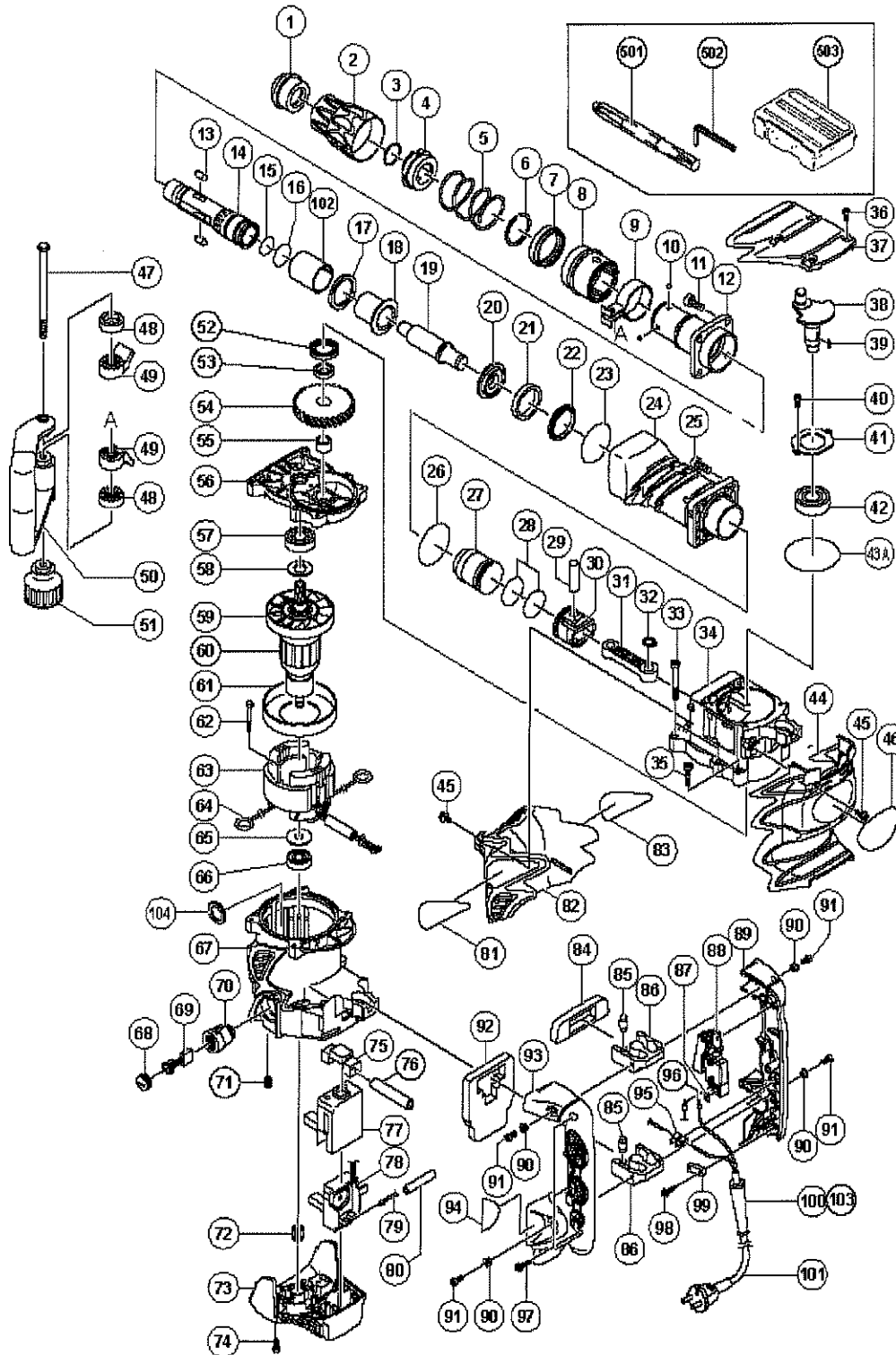


ELECTRIC TOOL PARTS LIST

■ DEMOLITION HAMMER
Model H 60MRV

2006 · 6 · 1

(E1-3)



TEILE

H60MRV

Pos. Nr.	Art.Nr.	BESCHREIBUNG	Nr. STUE	KOMMENTAR
1	315-529		1	
2	324-025		1	
3	320-803		1	
4	320-804		1	
5	324-027		1	
6	317-088		1	
7	320-810		1	
8	324-028		1	
9	320-635		1	
10	959-150		4	
11	985-479		4	
12	324-029		1	
13	313-421		2	
14	324-026		1	
15	872-470		1	
16	872-767		1	
17	317-094		1	
18	324-030		1	
19	324-031		1	
20	317-091		1	
21	324-032		1	
22	317-095		1	
23	317-119		1	
24	324-034		1	
25	995-400		4	
26	956-996		1	
27	324-033		1	
28	985-454		2	
29	301-509		1	
30	317-084		1	
31	317-082		1	
32	939-543		1	
33	301-567		4	
34	324-035		1	
35	324-056		2	
36	990-079		4	
37	324-037		1	
38	317-078		1	
39	940-533		1	

*:ALTERNATIVTEILE

TEILE

H60MRV

Pos. Nr.	Art.Nr.	BESCHREIBUNG	Nr. STUE	KOMMENTAR
40	984-509		2	
41	985-443		1	
42	620-4DD		1	
43A	326-257		1	
44	324-038		1	
45	998-471		3	
46			1	
47	317-107		1	
48	317-106		2	
49	317-105		2	
50	317-103		1	INCLUD.9,47-49,51
51	317-108		1	
52	995-403		1	
53	995-402		1	
54	317-080		1	
55	985-442		1	
56	324-048		1	INCLUD.55
57	620-3DD		1	
58	992-841		1	
59	996-370		1	
* 60	360-691C		1	INCLUD.59
* 60	360-691U		1	INCLUD.57-59,65,66
* 60	360-691E		1	INCLUD.59
* 60	360-691F		1	INCLUD.59
61	305-610		1	
62	953-121		2	
* 63	340-610C		1	INCLUD.64
* 63	340-610G		1	INCLUD.64
* 63	340-610E		1	INCLUD.64
* 63	340-610F		1	INCLUD.64
64	945-932		2	
65	944-954		1	
66	620-1DD		1	
67	324-040		1	INCLUD.70,71
68	940-540		2	
69	999-074		2	
70	956-984		2	
71	938-477		2	
72	317-087		1	

*ALTERNATIVTEILE

TEILE

H60MRV

Pos. Nr.	Art.Nr.	BESCHREIBUNG	Nr. STUE	KOMMENTAR
73	324-041		1	
74	317-245		2	
75	324-045		1	
76	322-530		1	
77	317-100		1	
* 78	324-050		1	
* 78	324-051		1	
* 78	324-052		1	
* 79	317-113		1	EXCEPT FOR SIN,USA,CAN,IND
* 80			2	
80	000-008D		0	FOR USA,CAN
81			1	
82	324-036		1	
83			1	
84	324-046		1	
85	310-124		8	
86	310-123		2	
* 87	949-423		1	EXCEPT FOR SIN,NZL,USA,CAN,IND
88	306-143		1	
89	324-042		1	
90	991-711		4	
91	991-690		4	
92	324-047		1	
93	324-043		1	
94			1	
95	938-307		1	
* 96	980-063		1	
* 96	930-804		1	FOR USA,CAN
97	307-028		3	
98	984-750		2	
* 99	960-266		1	
* 99	981-987Z		1	FOR SUI
100	953-327		1	
* 101	500-390Z		1	(CORD ARMOR D8.8)
* 101	500-408Z		1	(CORD ARMOR D8.8) FOR NZL,AUS
* 101	500-434Z		1	(CORD ARMOR D8.8) FOR USA,CAN
* 101	500-424Z		1	(CORD ARMOR D8.8) FOR SIN
* 101	500-467Z		1	(CORD ARMOR D10.1) FOR GBR (110V)
* 101	500-446Z		1	(CORD ARMOR D8.8) FOR GBR (230V)

*ALTERNATIVTEILE

TEILE

H60MRV

Pos. Nr.	Art.Nr.	BESCHREIBUNG	Nr. STUE	KOMMENTAR
*	101	500-391Z	1	(CORD ARMOR D8.8) FOR SUI
*	101	500-235Z	1	(CORD ARMOR D8.8) FOR IND
	102	324-130	1	
	103	938-051	1	
*	104	956-683	2	FOR AUS

STANDARDZUBEHÖR

Pos. Nr.	Art.Nr.	BESCHREIBUNG	Nr. STUE	KOMMENTAR
	501	313-471	1	
	502	872-422	1	
	503	324-049	1	
	601	981-840	1	
	602	308-471	1	
*	603	980-927	1	EXCEPT FOR USA,CAN
	604	313-471	1	
	605	313-472	1	
	606	313-473	1	
	607	313-474	1	
	608	313-475	1	
	609	313-476	1	
	610	313-477	1	
	611	313-478	1	
	612	313-479	1	