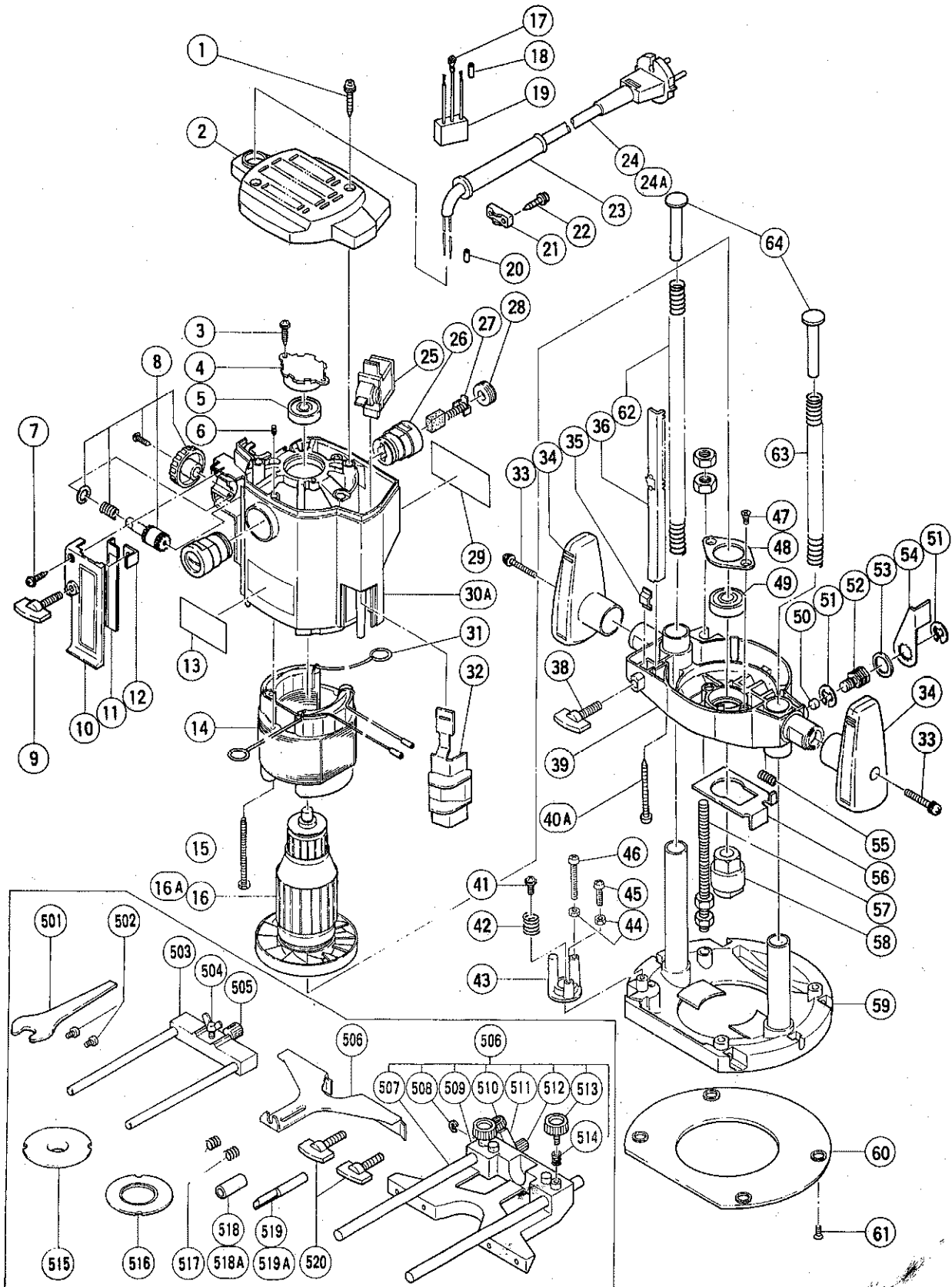


ELECTRIC TOOL PARTS LIST

■ ROUTER
Model M 12SA

1993 · 9 · 3
(E4)



PARTS

M 12SA

| ITEM NO. | CODE NO. | DESCRIPTION | NO. USED | REMARKS |
|----------|----------|--------------------------------|--------------------------------|---|
| 1 | 956-636 | TAPPING SCREW (W/WASHER) D4X25 | 2 | |
| 2 | 301-828 | TOP COVER (A) | 1 | |
| 3 | 954-017 | TAPPING SCREW D4X12 | 2 | |
| 4 | 961-443 | BEARING BUSHING | 1 | |
| 5 | 620-0VV | BALL BEARING 6200VVCMP2S | 1 | |
| 6 | 938-477 | HEX. SOCKET SET SCREW M5X8 | 2 | |
| 7 | 930-446 | TAPPING SCREW (W/WASHER) D4X16 | 1 | |
| 8 | 301-798 | KNOB PINION | 1 | |
| 9 | 301-801 | WING BOLT M6X27 | 1 | |
| 10 | 301-802 | FRONT COVER | 1 | |
| * | 11 | 301-824 | SCALE (MM) | 1 |
| * | 11 | 301-825 | SCALE (INCH) | 1 |
| | 12 | 301-800 | SCALE STOPPER | 1 |
| * | 13 | 301-827 | HITACHI LABEL | 1 |
| * | 13 | 302-389 | HITACHI LABEL | 1 FOR USA,CAN,KOR |
| * | 14 | 340-174C | STATOR ASS'Y 110V - 115V | 1 INCLUD.31 |
| * | 14 | 340-174D | STATOR ASS'Y 127V | 1 INCLUD.31 |
| * | 14 | 340-174E | STATOR ASS'Y 220V - 230V | 1 INCLUD.31 |
| * | 14 | 340-174F | STATOR ASS'Y 230V - 240V | 1 INCLUD.31 FOR AUS,KUW,FIJ,NGU |
| * | 14 | 340-174K | STATOR ASS'Y 220V - 230V | 1 INCLUD.31 FOR NZL,ITA,FRG,HOL,DEN,ESP |
| * | 14 | 340-174G | STATOR ASS'Y 220V - 230V | 1 INCLUD.31 FOR SAF,SWE,AUT,NOR |
| * | 14 | 340-174H | STATOR ASS'Y 240V | 1 INCLUD.31 FOR GBR |
| * | 14 | 340-174J | STATOR ASS'Y 110V | 1 INCLUD.31 FOR GBR |
| * | 14 | 340-173 | STATOR ASS'Y 100V | 1 INCLUD.31 FOR KOR |
| | 15 | 961-400 | HEX. HD. TAPPING SCREW D5X70 | 2 |
| * | 16A | 360-145U | ARMATURE ASS'Y 110V - 115V | 1 INCLUD.5,49 |
| * | 16 | 360-145D | ARMATURE 127V | 1 |
| * | 16 | 360-145E | ARMATURE 220V - 230V | 1 |
| * | 16 | 360-145F | ARMATURE 240V | 1 |
| * | 17 | 961-419Z | TERMINAL | 1 FOR NOISE SUPPRESSOR |
| * | 18 | 961-820 | TUBE (D) | 2 FOR NOISE SUPPRESSOR |
| * | 19 | 994-273 | NOISE SUPPRESSOR | 1 |
| * | 20 | 981-373 | TUBE (D) | 2 FOR CORD |
| | 21 | 937-831 | CORD CLIP | 1 |
| | 22 | 984-750 | TAPPING SCREW (W/FLANGE) D4X16 | 2 |
| * | 23 | 953-327 | CORD ARMOR D8.8 | 1 |
| * | 23 | 938-051 | CORD ARMOR D10.1 | 1 |
| * | 24 | 500-201Z | CORD | 1 (CORD ARMOR D10.1) |
| * | 24 | 500-247Z | CORD | 1 (CORD ARMOR D10.1) FOR SWE,NOR |
| * | 24 | 500-248Z | CORD | 1 (CORD ARMOR D10.1) FOR SUI |
| * | 24 | 500-234Z | CORD | 1 (CORD ARMOR D8.8) FOR ITA,FRG,HOL, DEN,AUT,INA,SUR,FRA,GRE |
| * | 24 | 500-242Z | CORD | 1 (CORD ARMOR D10.1) FOR USA,CAN |
| * | 24 | 500-226Z | CORD | 1 (CORD ARMOR D8.8) FOR NGU,NZL,FIJ |
| * | 24 | 500-237Z | CORD | 1 (CORD ARMOR D8.8) FOR SAF |
| * | 24 | 500-396Z | CORD | 1 (CORD ARMOR D10.1) FOR GBR (110V) |
| * | 24 | 500-411Z | CORD | 1 (CORD ARMOR D10.1) FOR AUS |
| * | 24 | 500-423Z | CORD | 1 (CORD ARMOR D8.8) FOR SAU |
| * | 24 | 500-223Z | CORD | 1 (CORD ARMOR D10.1) FOR SIN,KUW |
| * | 24 | 500-245Z | CORD | 1 (CORD ARMOR D10.1) FOR SYR,ESP |
| * | 24 | 500-214Z | CORD | 1 (CORD ARMOR D10.1) FOR KOR |

*: ALTERNATIVE PARTS

