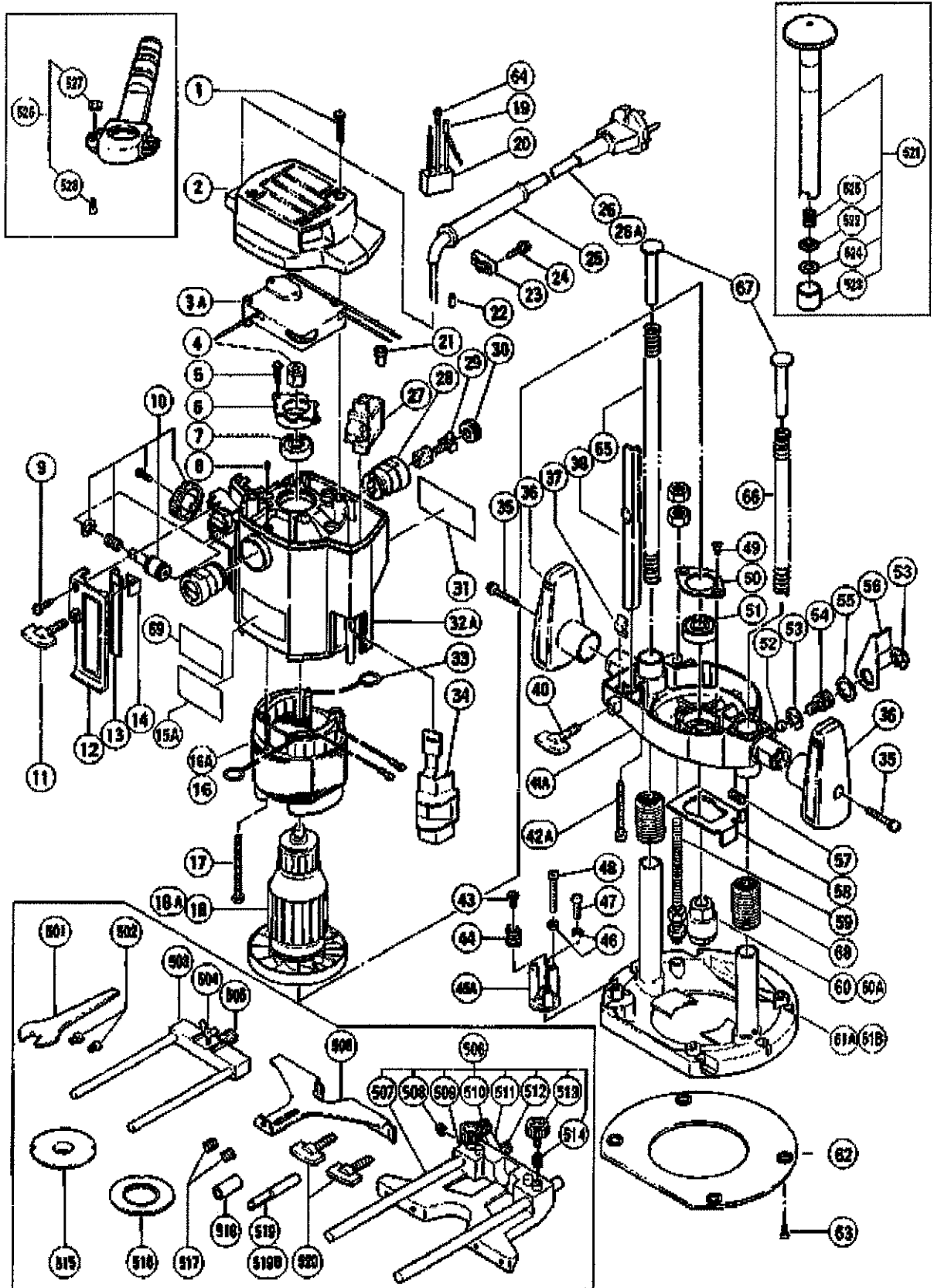


ELECTRIC TOOL PARTS LIST

ROUTER

2000.6.1

Model M 12V**(E4-1)**

TEILE

M12V

Pos. Nr.	Art.Nr.	BESCHREIBUNG	Nr. STUE.	KOMMENTAR
1	301-815	SCHNEIDSCHRAUBE D4X45 M.FLANSCH	2	
2	301-814	ABDECKUNG (B) M12V	1	
* 3A	301-820	DREHZAHLREGLER M12V	1	
4	301-797	MAGNET M12V	1	
5	954-017	SCHNEIDSCHRAUBE D4X12	2	
6	301-796	LAGERHALTER M12V	1	
7	620-0VV	KUGELLAGER 6200 VV	1	
8	938-477	INBUSSTIFTSCHRAUBE M5X8	2	
9	930-446	SCHNEIDSCHRAUBE D4X16 M.U-SCHEIBE	1	
10	301-798	KNOPFRITZEL M8/M8V/M12V/SA	1	
11	301-801	FLÜGELMUTTER M6X27 M12SAV/M8/M8V	1	
12	301-802	VORDERDECKEL M12SA/M12V	1	
* 13	301-824	ANZEIGE M8/M8V/M12SA/M12V	1	
14	301-800	ANZEIGENSTOPPER M12SAV/M8/M8V	1	
15A			1	
* 16	340-176E	STATOR 220V-230V M12V	1	INCLUD.33
17	961-400	SCHNEIDSCHRAUBE D5X70	2	
* 18	360-147E	ANKER 220V-240V M12V	1	
* 19	961-820	ADERENDHÜLSE (D) (DIV.TYPEN)	1	FOR NZL,GBR,SAF,ITA,FRG,FRA,HOL,DEN,SWE,
*				AUT,NOR,SUI,KOR
* 19	961-820	ADERENDHÜLSE (D) (DIV.TYPEN)	2	FOR USA,CAN,AUS
* 20	994-273	KONDENSATOR DIV.TYPEN	1	
* 22	981-373	ADERENDHÜLSE (D) DIV.TYPEN	2	
23	937-631	KABELKLEMME DIV.TYPEN	1	
24	984-750	SCHNEIDSCHRAUBE D4X16 MIT FLANSCH	2	
* 25	953-327	KABELKNICKSCHUTZ D8.8 DIV.TYPEN	1	
* 26	500-234Z	ANSCHLUSSKABEL MIT STECKER	1	(CORD ARMOR D8.8) FOR ITA,FRG,HOL,DEN,
*				INA,SUR,FRA,GRE
27	301-821	SCHALTER M12SA/M12V	1	
* 28	980-487	KOHLLENHALTER C13U/CM12Y u.a.	2	
29	999-044	KOHLLENBÜRSTEN (PAAR)	2	
* 30	940-540	KOHLLENKAPPE C13U/M12V/DIV.TYPEN	2	
31			1	
* 32A	301-822	MOTERGEHÄUSE M12SA/M12V	1	INCLUD.8,28,67
33	998-744	KOHLLENHALTERKLEMME M12SAV	2	
34	301-803	SCHALTHEBEL M12SA/M12V	1	
35	986-274	+KOPFSCHRAUBE M5X25 M.U.SCHEIBE	2	
36	301-813	HANDGRIFF M8/M8V/M12SA/M12V	2	

*ALTERNATIVTEILE

TEILE

M12V

Pos. Nr.	Art.Nr.	BESCHREIBUNG	Nr. STUE.	KOMMENTAR
37	301-805	HALTESTÜCK M8/M8V/M12V/SA	1	
38	301-799	TIEFENANSCHLAG M12SA/M12V	1	
40	301-806	FLÜGELSCHRAUBE M6X15	1	
41A	301-804	MOTORDECKEL M12SA/M12V	1	
42A	931-554	SCHNEIDSCHRAUBE D5X50 M12SA/V	4	
43	997-465	SCHNEIDSCHRAUBE D4X12 M.U-SCHEIBE	1	
44	971-858	FEDER (A) M8/M8V/M12SA7M12V	1	
45A	301-812	VERSTELLB.TIEFENANSCHLAG M12SA/V	1	
46	302-012	MUTTER M5 (SCHWARZ) C13U/M8V/M12V	2	
47	302-196	+KOPFSCHRAUBE M5X20 (SCHWARZ)	1	
48	302-197	+KOPFSCHRAUBE M5X35 (SCHWARZ)	1	
49	990-430	+SENKKOPFSCHRAUBE M4X10 SELBSTSI.	2	
50	301-808	LAGERDECKEL M12SAM12V	1	
51	620-1VV	KUGELLAGER 6201 VV	1	
52	971-848	FESTSTELLTEIL M8/M8V/M12SA/V	1	
53	670-514	SICHERUNGSRING D10 M8V/M12SA/V	2	
54	971-847	FESTSTELLSCHRAUBE M8V/M12SA/V	1	
55	971-846	U-SCHEIBE M8/M8V/M12SA/M12V	1	
56	956-786	FESTSTELLHEBEL M8/M8V/M12SA/V	1	
57	961-803	FEDER M12SA/V	1	
58	301-807	ARRETIERUNGSPLATTE M12SA/M12V	1	
59	301-811	BOLZEN M8 M12SA/V	1	
* 60	301-795	SPANNFUTTER 1/2" M12SA/M12V	1	
* 60A	301-794	SPANNFUTTER 12MM M12SA/V	1	
61A	301-809	FRÄSTISCH M.SÄULENFÜHRUNG M12SA/V	1	(TILL 9.1999 EXCEPT FOR USA,CAN)
61B	318-226	FRÄSTISCH M.SÄULENFÜHRUNG M12SA/V	1	(SINCE 10.1999 EXCEPT FOR USA,CAN)
62	301-810	GRUNDPLATTE M12SA/M12V	1	
63	992-013	+SENKKOPFSCHRAUBE M5X14 SELBSTSI.	4	
64	961-419Z	KLEMME CM6/CS35B/D13/u.a.	1	
65	303-316	FEDER M12SA/V	1	
66	303-317	FEDER M12SA/V	1	
67	956-778	FEDERFÜHRUNG M12SA/M12V	2	
68	318-227	FALTENBALG (A) M12SA/V	2	(SINCE 10.1999 EXCEPT FOR USA,CAN)
69			1	

STANDARDZUBEHÖR

M12V

Pos. Nr.	Art.Nr.	BESCHREIBUNG	Nr. STUE.	KOMMENTAR
501	956-923	MAULSCHLÜSSEL 21 MM M12SA/M12V	1	
502	949-234	+KOPFSCHRAUBE M5X 6 (10ST)	2	
* 503	956-792	STANGENHALTER M12SA/M12V	1	EXCEPT FOR FRA,SUI,GBR,CAN,HOL
* 504	949-394	FLÜGELSCHRAUBE M6X10 (10ST)	1	EXCEPT FOR FRA,SUI,GBR,CAN,HOL
* 505	956-793	ZUFÜHRSCHECKE M12SA/M12V	1	EXCEPT FOR FRA,SUI,GBR,CAN,HOL
* 506	956-797	FÜHRUNG M12SA/M12V	1	EXCEPT FOR FRA,SUI,GBR,CAN,HOL
515	956-790	FÜHRUNGSHÜLSE D18 M8/V/M12SA/V	1	
517	947-859	FEDER M8/M8V/M12SA/M12V	2	
* 518	956-798	REDUZIERHÜLSE 12x6	1	
* 518	956-799	REDUZIERHÜLSE 12x8	1	
* 518	956-930		1	
* 518	956-927Z	REDUZIERHÜLSE 1/2"X1/4" M12SA/V	1	
* 518	956-928Z	REDUZIERHÜLSE 1/2"X3/8" M12SA/V	1	
* 519A	313-765		1	FOR COLLET CHUCK 1/2"
* 519A	956-808		1	
520	301-806	FLÜGELSCHRAUBE M6X15	2	
* 521	318-304	FEINEINSTELLUNGKNOPF (SET)	1	INCLUD.522-525 FOR FRG,FRA,BEL,SUI,FIN,
				USA,CAN,AUS,NZL
522	318-350	SPEZIALMUTTER M8/M8V/M12SA/V	1	
523	317-300	BUCHSE M8/V/M12SA/V	1	
524	956-046	SCHEIBE (B) M8/V/M12SA/V	1	
525	971-858	FEDER (A) M8/M8V/M12SA7M12V	1	
* 526	997-466	ABSAUGADAPTER (SATZ) M8/V/M12SA/V	1	INCLUD.527,528 FOR FRG,FRA,BEL,ITA,FIN
527	997-467	RÄNDELMUTTER M8/V/M12SA/V	2	
528	949-237	+KOPFSCHRAUBE M5X12 (10ST)	2	

*ALTERNATIVTEILE

-- 4 --

HITACHI POWER TOOLS TECHNICAL NEWS

NO EX908-2 PAGE 1/3
ISSUED ON: 9/20/1999
ISSUED BY HITACHI KOKI CO., LTD.

SUBJECT: ADDITION OF ADJUSTING KNOB SET AND DUST COLLECTION ADAPTER SET, MODELS M12SA, M12V, M8 AND M8V

1. SUMMARY:

ADJUSTING KNOB SET AND DUST COLLECTION ADAPTER SET ARE ADDED AS STANDARD ACCESSORIES.

2. REASON FOR CHANGE:

SALES EFFICIENCY

3. CHANGED PARTS LIST NO:

MODEL NAME	M12SA	M12V	M8	M8V
PARTS LIST NO.	0653	0652	0656	0655

4. AFFECTED PARTS:

MODEL NAME	(A) BEFORE CHANGE (THROUGH SEP. 1999)		INTER-CHANGEABILITY	(B) AFTER CHANGE (SINCE OCT. 1999)		UNIT PCS.	REMARKS	PRICE (YEN)
	ITEM NO	CODE NO		ITEM NO	CODE NO			
M12SA	521-1			521	318304	1	INCLUD. 522 TO 525 FOR FRG. BEL. AUS. NZL	1900
	521-2							
	522			522	318350	1	SQUARE NUT	100
	523			523	317300	1	SLEEVE	150
	524			524	956046	1	WASHER (B)	40
	525			525	971858	1	SPRING (A)	30
	526-1			526	997466	1	DUST COLLECTION ADAPTER SET	1100
	526-2							
	527			527	997467	2	KNOB NUT	130
	528			528	949237	2	MACHINE SCREW M5X12 (10 PCS.)	30
M12V	521-1			521	318304	1	INCLUD. 522 TO 525 FOR FRG. FRA. BEL. SUI. FIN. USA. CAN. AUS. NZL	1900
	521-2							
	522			522	318350	1	SQUARE NUT	100
	523			523	317300	1	SLEEVE	150
	524			524	956046	1	WASHER (B)	40
	525			525	971858	1	SPRING (A)	30
	526-1			526	997466	1	DUST COLLECTION ADAPTER SET	1100
	526-2							
	527			527	997467	2	KNOB NUT	130
	528			528	949237	2	MACHINE SCREW M5X12 (10 PCS.)	30

INTER CHANGEABILITY (A) ↔ (B): INTERCHANGEABLE
 (A) ← (B): (B) CAN BE A SUBSTITUTE FOR (A)
 (A) → (B): (A) CAN BE A SUBSTITUTE FOR (B)
 *SUPPLY "C": "CONTINUED", "D": "DISCONTINUED" APPLIES ONLY TO THE SUBJECT MODEL(S). THE INDICATED PART MAY STILL BE SUPPLIED FOR OTHER APPLICABLE MODELS. (SEE "INTERCHANGEABILITY LIST")