

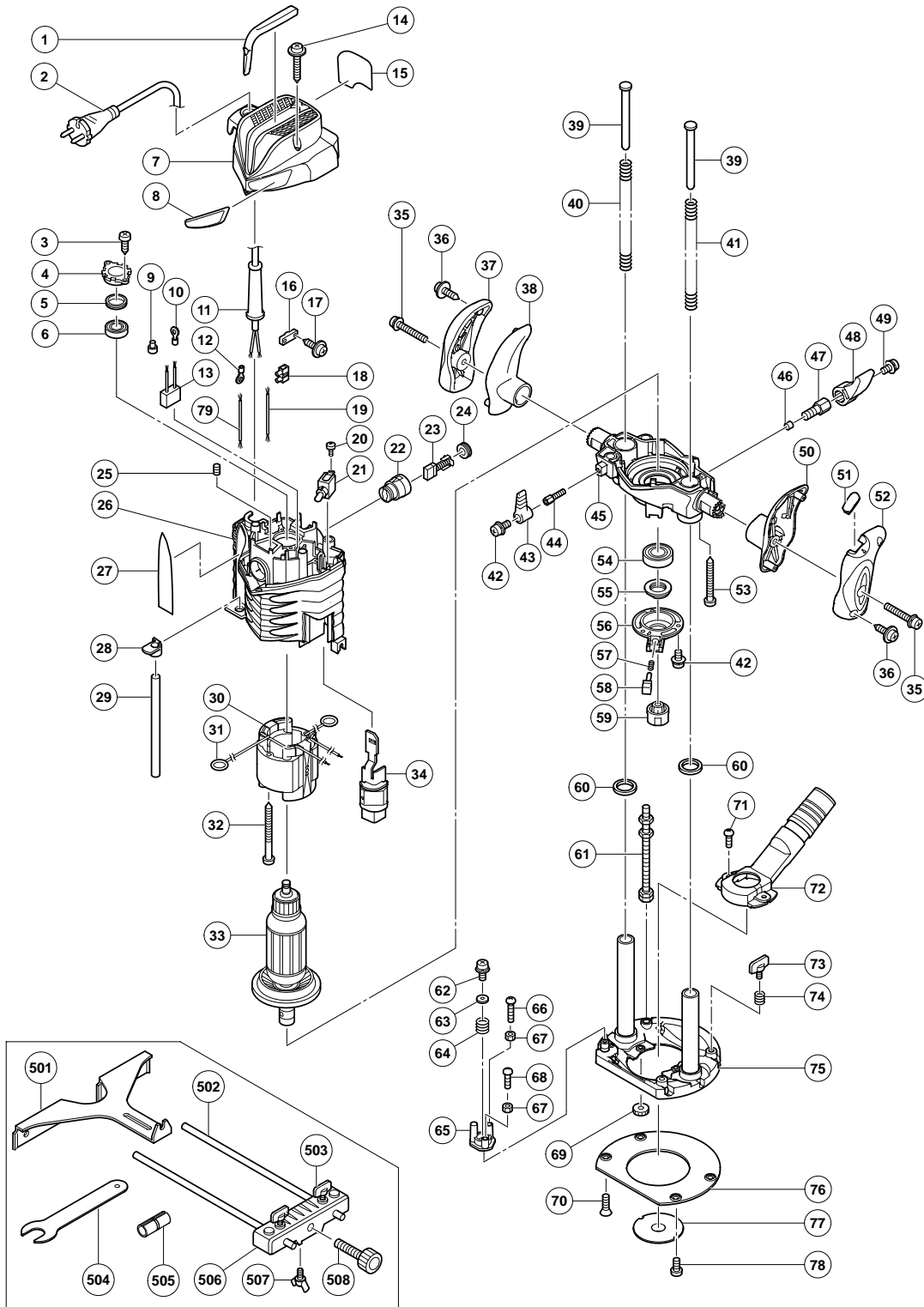
ELECTRIC TOOL PARTS LIST

ROUTER

2006 • 3 • 28

Model M 8SA2

(E1)



PARTS

M 8SA2

| ITEM NO. | CODE NO. | DESCRIPTION | NO. USED | REMARKS |
|----------|----------|---|----------|---|
| 1 | | HITACHI LABEL (B) | 1 | |
| * 2 | 500-234Z | CORD | 1 | (CORD ARMOR D8.8) |
| * 2 | 500-247Z | CORD | 1 | (CORD ARMOR D8.8) FOR AUT, FIN, DEN, SWE, NOR |
| * 2 | 500-439Z | CORD | 1 | (CORD ARMOR D8.8) FOR AUS, NZL |
| * 2 | 500-447Z | CORD | 1 | (CORD ARMOR D8.8) FOR SUI |
| 3 | 954-017 | TAPPING SCREW D4X12 | 2 | |
| 4 | 326-096 | BEARING BUSHING | 1 | |
| 5 | 323-420 | RUBBER RING | 1 | |
| 6 | 608-VVM | BALL BEARING 608VVC2PS2L | 1 | |
| 7 | 326-109 | HEAD COVER | 1 | |
| 8 | | HITACHI LABEL (A) | 1 | |
| 9 | 959-141 | CONNECTOR 50092 (10 PCS.) | 1 | |
| 10 | 930-804 | TERMINAL M4.0 (10 PCS.) | 1 | |
| 11 | 953-327 | CORD ARMOR D8.8 | 1 | |
| * 12 | 980-063 | TERMINAL | 1 | FOR CORD |
| 13 | 930-039 | NOISE SUPPRESSOR | 1 | |
| 14 | 307-028 | TAPPING SCREW (W/FLANGE) D4X25 (BLACK) | 3 | |
| 15 | | NAME PLATE | 1 | |
| 16 | 937-631 | CORD CLIP | 1 | |
| 17 | 984-750 | TAPPING SCREW (W/FLANGE) D4X16 | 2 | |
| * 18 | 938-307 | PILLAR TERMINAL | 1 | |
| * 18 | 958-308Z | PILLAR TERMINAL (A) | 1 | FOR AUT, FIN, DEN, SWE, NOR, SUI |
| 19 | 326-177 | INTERNAL WIRE (BLUE) | 1 | |
| 20 | 307-887 | MACHINE SCREW (W/WASHER) M3.5X6 | 2 | |
| 21 | 314-603 | SWITCH (1P SOLDER TYPE) | 1 | |
| 22 | 981-586 | BRUSH HOLDER | 2 | |
| 23 | 999-043 | CARBON BRUSH (1 PAIR) | 2 | |
| 24 | 961-781 | BRUSH CAP | 2 | |
| 25 | 938-477 | HEX. SOCKET SET SCREW M5X8 | 2 | |
| 26 | 326-093 | HOUSING ASS'Y | 1 | INCLUD. 22, 25 |
| 27 | 326-090 | SCALE | 1 | FOR EUROPE |
| 27 | 326-094 | SCALE | 1 | FOR NZL, AUS, SAF |
| 28 | 326-084 | MARKER | 1 | |
| 29 | 325-196 | STOPPER POLE (A) | 1 | |
| * 30 | 340-677E | STATOR ASS'Y 230V | 1 | INCLUD. 31 |
| * 30 | 340-677F | STATOR ASS'Y 240V | 1 | INCLUD. 31 |
| 31 | 930-703 | BRUSH TERMINAL | 2 | |
| 32 | 960-251 | HEX. HD. TAPPING SCREW D5X65 | 2 | |
| * 33 | 360-775E | ARMATURE 230V | 1 | |
| * 33 | 360-775F | ARMATURE 240V | 1 | |
| 34 | 326-083 | LEVER | 1 | |
| 35 | 307-443 | MACHINE SCREW (W/WASHERS) M6X30 (BLACK) | 2 | |
| 36 | 305-812 | TAPPING SCREW (W/FLANGE) D4X16 (BLACK) | 4 | |
| 37 | 325-220 | HANDLE (L) B | 1 | |
| 38 | 325-171 | HANDLE (L) A | 1 | |
| 39 | 325-180 | SPRING GUIDE | 2 | |
| 40 | 303-316 | SPRING | 1 | |
| 41 | 303-317 | SPRING | 1 | |
| 42 | 935-196 | MACHINE SCREW (W/WASHERS) M4X12 (BLACK) | 4 | |
| 43 | 325-174 | LEVER (C) | 1 | |
| 44 | 325-175 | LOCK SCREW M6 | 1 | |

PARTS

M 8SA2

| ITEM NO. | CODE NO. | DESCRIPTION | NO. USED | REMARKS | |
|----------|----------|----------------|--|---------|----------------------------------|
| 45 | 326-097 | END BRACKET | 1 | | |
| 46 | 971-848 | LOCK PIECE | 1 | | |
| 47 | 325-187 | LOCK SCREW M10 | 1 | | |
| * | 48 | 326-042 | LEVER (A) | 1 | |
| * | 48 | 322-601 | LEVER (A) W/O STOPPER | 1 | FOR SAF |
| | 49 | 997-314 | MACHINE SCREW (W/WASHERS) M6X10 | 1 | |
| | 50 | 325-172 | HANDLE (R) A | 1 | |
| | 51 | 325-227 | DIAL COVER | 1 | |
| | 52 | 325-221 | HANDLE (R) B | 1 | |
| | 53 | 307-100 | TAPPING SCREW D5X50 | 4 | |
| | 54 | 600-4T1 | BALL BEARING 6004TIXVV | 1 | |
| | 55 | 325-186 | THRUST NUT | 1 | |
| | 56 | 326-082 | BEARING COVER | 1 | |
| | 57 | 325-183 | LOCK SPRING (A) | 1 | |
| | 58 | 325-182 | PUSHING BUTTON | 1 | |
| * | 59 | 325-212 | COLLET CHUCK 8MM | 1 | |
| * | 59 | 323-293 | COLLET CHUCK 1/4" | 1 | FOR AUS, NZL, SAF |
| | 60 | 323-426 | FELT | 2 | |
| | 61 | 302-315 | SCREW M8 | 1 | |
| | 62 | 317-200 | MACHINE SCREW (W/WASHERS) M4X8 (BLACK) | 1 | |
| | 63 | 962-569 | WASHER (B) | 1 | |
| | 64 | 971-858 | SPRING (A) | 1 | |
| | 65 | 326-081 | STOPPER BLOCK | 1 | |
| | 66 | 302-316 | MACHINE SCREW M5X25 (BLACK) | 1 | |
| | 67 | 302-012 | NUT M5 (BLACK) | 2 | |
| | 68 | 302-317 | MACHINE SCREW M5X16 (BLACK) | 1 | |
| | 69 | 997-467 | KNOB NUT | 2 | |
| | 70 | 992-013 | SEAL LOCK FLAT HD. SCREW M5X14 | 4 | |
| | 71 | 949-237 | MACHINE SCREW M5X12 (10 PCS.) | 2 | |
| * | 72 | 997-466 | DUST COLLECTION ADAPTER SET | 1 | INCLUD 69, 71 FOR EUROPE |
| | 73 | 301-806 | WING BOLT M6X15 | 2 | |
| | 74 | 947-859 | LOCK SPRING | 2 | |
| | 75 | 326-098 | BASE | 1 | |
| | 76 | 326-080 | SUB BASE | 1 | |
| | 77 | 956-790 | TEMPLATE GUIDE D18 | 1 | |
| | 78 | 949-234 | MACHINE SCREW M5X6 (10 PCS.) | 2 | |
| * | 79 | 326-179 | INTERNAL WIRE (BROWN) | 1 | FOR AUT, FIN, DEN, SWE, NOR, SUI |
| | | | | | |
| | | | | | |
| | | | | | |
| | | | | | |
| | | | | | |
| | | | | | |
| | | | | | |
| | | | | | |
| | | | | | |
| | | | | | |
| | | | | | |
| | | | | | |
| | | | | | |
| | | | | | |
| | | | | | |
| | | | | | |

STANDARD ACCESSORIES

M 8SA2

| ITEM NO. | CODE NO. | DESCRIPTION | NO. USED | REMARKS | |
|----------|----------|---------------------------|----------|---------|--|
| 501 | 956-797 | STRAIGHT GUIDE | 1 | | |
| 502 | 971-622 | GUIDE BAR | 2 | | |
| 503 | 301-806 | WING BOLT M6X15 | 2 | | |
| 504 | 323-295 | WRENCH 23MM | 1 | | |
| 505 | 971-852 | CHUCK SLEEVE 8X6 | 1 | | |
| 506 | 326-091 | BAR HOLDER | 1 | | |
| 507 | 949-394 | WING BOLT M6X10 (10 PCS.) | 1 | | |
| 508 | 956-793 | FEED SCREW | 1 | | |
| | | | | | |
| | | | | | |
| | | | | | |
| | | | | | |
| | | | | | |
| | | | | | |
| | | | | | |

OPTIONAL ACCESSORIES

| ITEM NO. | CODE NO. | DESCRIPTION | NO. USED | REMARKS | |
|----------|----------|-------------------------------|----------|--------------------------|--|
| * 601 | 971-878 | STRAIGHT BIT (TCT) D1/4"X1/4" | 1 | FOR AUS, NZL, SAF | |
| * 602 | 956-808 | STRAIGHT BIT (TCT) D8X8 | 1 | EXCEPT FOR AUS, NZL, SAF | |
| * 603 | 323-293 | COLLET CHUCK 1/4" | 1 | EXCEPT FOR AUS, NZL, SAF | |
| 604 | 956-794 | TRIMMER GUIDE | 1 | | |
| 605 | 997-466 | DUST COLLECTION ADAPTER SET | 1 | INCLUD. 606, 607 | |
| 606 | 997-467 | KNOB NUT | 2 | | |
| 607 | 949-237 | MACHINE SCREW M5X12 (10 PCS.) | 2 | | |
| 608 | 318-304 | ADJUSTING KNOB SET | 1 | INCLUD. 609-612 | |
| 609 | 318-350 | SQUARE NUT | 1 | | |
| 610 | 317-300 | SLEEVE | 1 | | |
| 611 | 956-046 | WASHER (B) | 1 | | |
| 612 | 971-858 | SPRING (A) | 1 | | |
| 613 | 303-347 | TEMPLATE GUIDE D9.5 | 1 | | |
| 614 | 303-348 | TEMPLATE GUIDE D10 | 1 | | |
| 615 | 303-349 | TEMPLATE GUIDE D11.1 | 1 | | |
| 616 | 303-350 | TEMPLATE GUIDE D12 | 1 | | |
| 617 | 303-351 | TEMPLATE GUIDE D12.7 | 1 | | |
| 618 | 303-352 | TEMPLATE GUIDE D14 | 1 | | |
| 619 | 303-353 | TEMPLATE GUIDE D16 | 1 | | |
| 620 | 303-354 | TEMPLATE GUIDE D24 | 1 | | |
| 621 | 303-355 | TEMPLATE GUIDE D40 | 1 | | |
| | | | | | |
| | | | | | |
| | | | | | |
| | | | | | |
| | | | | | |
| | | | | | |
| | | | | | |
| | | | | | |