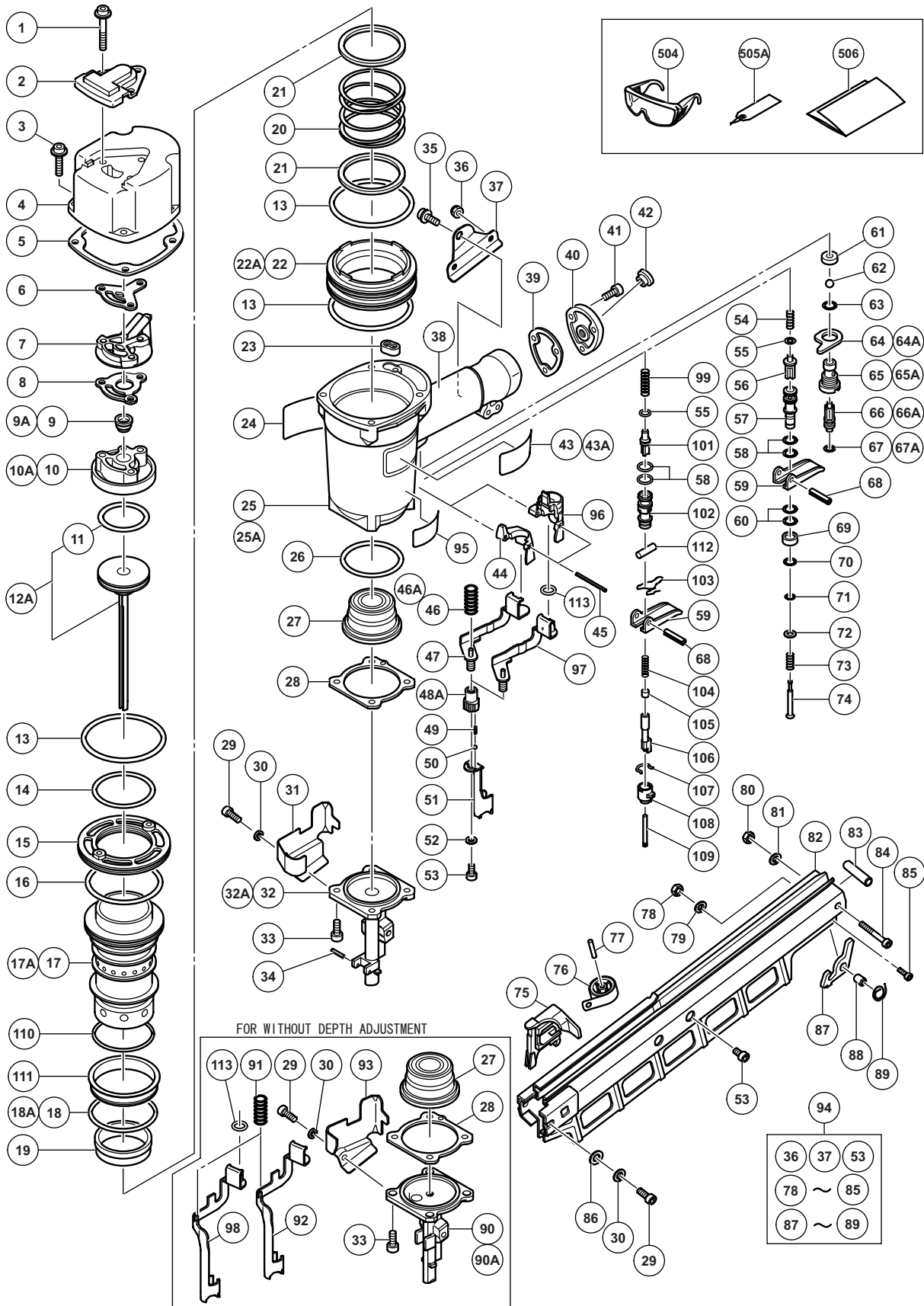


## PNEUMATIC TOOL PARTS LIST

### STRIP NAILER Model NR 83A2

2011·6·27  
(E2)



**PARTS**

NR 83A2

| ITEM NO. | CODE NO. | DESCRIPTION                                 | NO. USED | REMARKS                           |
|----------|----------|---|----------|-----------------------------------|
| 1        | 883-509  | HEX. SOCKET HD. BOLT (W/FLANGE) M6 X 45     | 3        |                                   |
| 2        | 877-330  | TOP COVER                                   | 1        |                                   |
| 3        | 883-507  | HEX. SOCKET HD. BOLT (W/SP. WASHER) M6 X 25 | 4        |                                   |
| 4        | 877-324  | EXHAUST COVER                               | 1        |                                   |
| 5        | 877-325  | GASKET (B)                                  | 1        |                                   |
| 6        | 877-329  | GASKET (F)                                  | 1        |                                   |
| 7        | 877-328  | EXHAUST PIECE                               | 1        |                                   |
| 8        | 877-854  | GASKET (C)                                  | 1        |                                   |
| * 9      | 884-110  | EXHAUST VALVE (ORANGE)                      | 1        |                                   |
| * 9A     | 887-774  | EXHAUST VALVE                               | 1        | FOR MODEL (Y), (S1)               |
| * 10     | 877-307  | HEAD CAP AND GASKET SET                     | 1        | INCLUD. 8                         |
| * 10A    | 887-769  | HEAD CAP AND GASKET SET                     | 1        | INCLUD. 8 FOR MODEL (Y), (S1)     |
| 11       | 877-368  | O-RING (1AP-48)                             | 1        |                                   |
| 12A      | 885-915  | PISTON ASS'Y                                | 1        | INCLUD. 11                        |
| 13       | 877-316  | O-RING (S-90)                               | 3        |                                   |
| 14       | 877-312  | CYLINDER O-RING (I.D 63.1)                  | 1        |                                   |
| 15       | 877-318  | CYLINDER PLATE                              | 1        |                                   |
| 16       | 877-313  | CYLINDER O-RING (I.D 79.3)                  | 1        |                                   |
| * 17     | 884-068  | CYLINDER                                    | 1        |                                   |
| * 17A    | 887-762  | CYLINDER                                    | 1        | FOR MODEL (Y), (S1)               |
| * 18     | 877-314  | CYLINDER O-RING (I.D 69.3)                  | 1        |                                   |
| * 18A    | 878-863  | O-RING (S-70)                               | 1        | FOR MODEL (Y), (S1)               |
| 19       | 877-317  | CYLINDER RING                               | 1        |                                   |
| 20       | 877-321  | CYLINDER SPRING                             | 1        |                                   |
| 21       | 877-322  | BASE WASHER                                 | 1        |                                   |
| * 22     | 877-310  | CYLINDER GUIDE                              | 1        |                                   |
| * 22A    | 887-763  | CYLINDER GUIDE                              | 1        | FOR MODEL (Y), (S1)               |
| 23       | 877-327  | GASKET (G)                                  | 1        |                                   |
| 24       | 884-070  | WARNING LABEL                               | 1        |                                   |
| * 25     | 883-506  | BODY ASS'Y                                  | 1        | INCLUD. 38                        |
| * 25A    | 887-773  | BODY ASS'Y                                  | 1        | INCLUD. 38 FOR MODEL (Y), (S1)    |
| 26       | 877-315  | CYLINDER O-RING (I.D 63.9)                  | 1        |                                   |
| 27       | 883-511  | PISTON BUMPER (B)                           | 1        |                                   |
| 28       | 877-334  | GASKET (A)                                  | 1        |                                   |
| 29       | 878-426  | HIGH TENSION BOLT M6 X 18                   | 2        |                                   |
| 30       | 949-455  | SPRING WASHER M6 (10 PCS.)                  | 2        |                                   |
| 31       | 884-061  | GUARD (A)                                   | 1        |                                   |
| * 32     | 884-060  | NOSE  | 1        | FOR WITH DEPTH ADJUSTMENT TYPE    |
| * 32A    | 887-770  | NOSE  | 1        | FOR MODEL (Y)                     |
| 33       | 883-492  | NYLOCK HEX. SOCKET HD. BOLT M8 X 22         | 4        |                                   |
| * 34     | 949-518  | ROLL PIN D3 X 18 (10 PCS.)                  | 1        | FOR WITH DEPTH ADJUSTMENT TYPE    |
| 35       | 883-505  | NYLOCK BOLT (W/FLANGE) M8 X 16              | 1        |                                   |
| 36       | 963-837  | NYLON NUT M6                                | 2        |                                   |
| 37       | 884-066  | HANDLE ARM (B)                              | 1        |                                   |
| 38       |          | GRIP RUBBER                                 | 1        | (SUPPLIED WITH ITEM NO. 601, 602) |
| 39       | 877-331  | GASKET (D)                                  | 1        |                                   |
| 40       | 878-311  | CAP   | 1        |                                   |
| 41       | 949-658  | HEX. SOCKET HD. BOLT M5 X 18 (10 PCS.)      | 3        |                                   |
| 42       | 872-035  | DUST CAP                                    | 1        |                                   |
| * 43     |          | NAME PLATE                                  | 1        |                                   |

**PARTS**

NR 83A2

| ITEM NO. | CODE NO. | DESCRIPTION                            | NO. USED | REMARKS                           |
|----------|----------|--|----------|-----------------------------------|
| * 43A    |          | NAME PLATE                             | 1        | FOR MODEL (Y), (S1)               |
| 44       | 884-119  | GUARD (B)                              | 1        |                                   |
| 45       | 884-025  | ROLL PIN D3 X 45                       | 1        |                                   |
| * 46     | 884-067  | SPRING                                 | 1        | FOR WITH DEPTH ADJUSTMENT TYPE    |
| * 46A    | 887-841  | SPRING                                 | 1        | FOR MODEL (Y)                     |
| * 47     | 884-063  | PUSHING LEVER (B)                      | 1        | FOR WITH DEPTH ADJUSTMENT TYPE    |
| * 48A    | 326-799  | ADJUSTER                               | 1        | FOR WITH DEPTH ADJUSTMENT TYPE    |
| * 49     | 880-175  | ADJUSTER SPRING                        | 2        | FOR WITH DEPTH ADJUSTMENT TYPE    |
| * 50     | 959-148  | STEEL BALL D3.175 (10 PCS.)            | 2        | FOR WITH DEPTH ADJUSTMENT TYPE    |
| * 51     | 884-062  | PUSHING LEVER (A)                      | 1        | FOR WITH DEPTH ADJUSTMENT TYPE    |
| * 52     | 880-081  | WASHER                                 | 1        | FOR WITH DEPTH ADJUSTMENT TYPE    |
| * 53     | 949-657  | HEX. SOCKET HD. BOLT M6 X 12 (10 PCS.) | 3        | FOR WITH DEPTH ADJUSTMENT TYPE    |
| * 53     | 949-657  | HEX. SOCKET HD. BOLT M6 X 12 (10 PCS.) | 2        | FOR WITHOUT DEPTH ADJUSTMENT TYPE |
| 54       | 875-643  | PLUNGER SPRING                         | 1        |                                   |
| 55       | 874-436  | O-RING (P-4)                           | 1        |                                   |
| 56       | 884-113  | PLUNGER (A)                            | 1        |                                   |
| 57       | 884-111  | VALVE BUSHING                          | 1        |                                   |
| 58       | 884-112  | O-RING (I.D 10.7)                      | 2        |                                   |
| 59       | 876-203  | TRIGGER                                | 1        |                                   |
| 60       | 872-645  | O-RING (P-9)                           | 2        |                                   |
| 61       | 878-734  | VALVE PACKING                          | 1        |                                   |
| 62       | 875-645  | URETHANE BALL (C) D7.14                | 1        |                                   |
| 63       | 875-638  | O-RING (S-12)                          | 1        |                                   |
| * 64     | 875-644  | VALVE PLATE                            | 1        |                                   |
| * 64A    | 887-771  | VALVE PLATE                            | 1        | FOR MODEL (Y), (S1)               |
| * 65     | 877-335  | TRIGGER VALVE BUSHING                  | 1        |                                   |
| * 65A    | 887-839  | TRIGGER VALVE BUSHING                  | 1        | FOR MODEL (Y), (S1)               |
| * 66     | 878-121  | TRIGGER PLUNGER                        | 1        |                                   |
| * 66A    |          | TRIGGER PLUNGER                        | 1        | FOR MODEL (Y), (S1)               |
| * 67     | 874-820  | PLUNGER O-RING                         | 1        |                                   |
| * 67A    | 887-840  | O-RING                                 | 1        | FOR MODEL (Y), (S1)               |
| 68       | 949-866  | ROLL PIN D3 X 30 (10 PCS.)             | 1        |                                   |
| 69       | 884-116  | VALVE SLEEVE (A)                       | 1        |                                   |
| 70       | 876-316  | O-RING (S-7)                           | 1        |                                   |
| 71       | 878-723  | PLUNGER O-RING                         | 1        |                                   |
| 72       | 949-424  | WASHER M5 (10 PCS.)                    | 1        |                                   |
| 73       | 884-115  | PLUNGER (B) SPRING                     | 1        |                                   |
| 74       | 884-114  | PLUNGER (B)                            | 1        |                                   |
| 75       | 877-393Z | NAIL FEEDER                            | 1        |                                   |
| 76       | 878-422  | RIBBON SPRING                          | 1        |                                   |
| 77       | 878-418  | NEEDLE ROLLER                          | 1        |                                   |
| 78       | 876-465  | NYLON NUT M4                           | 1        |                                   |
| 79       | 949-453  | SPRING WASHER M4 (10 PCS.)             | 1        |                                   |
| 80       | 877-371  | NYLON NUT M5                           | 1        |                                   |
| 81       | 949-454  | SPRING WASHER M5 (10 PCS.)             | 1        |                                   |
| 82       | 884-065  | MAGAZINE                               | 1        |                                   |
| 83       | 876-550  | SLEEVE                                 | 1        |                                   |
| 84       | 949-824  | HEX. SOCKET HD. BOLT M5 X 45 (10 PCS.) | 1        |                                   |
| 85       | 949-650  | HEX. SOCKET HD. BOLT M4 X 15 (10 PCS.) | 1        |                                   |
| 86       | 877-402  | WASHER                                 | 1        |                                   |





