

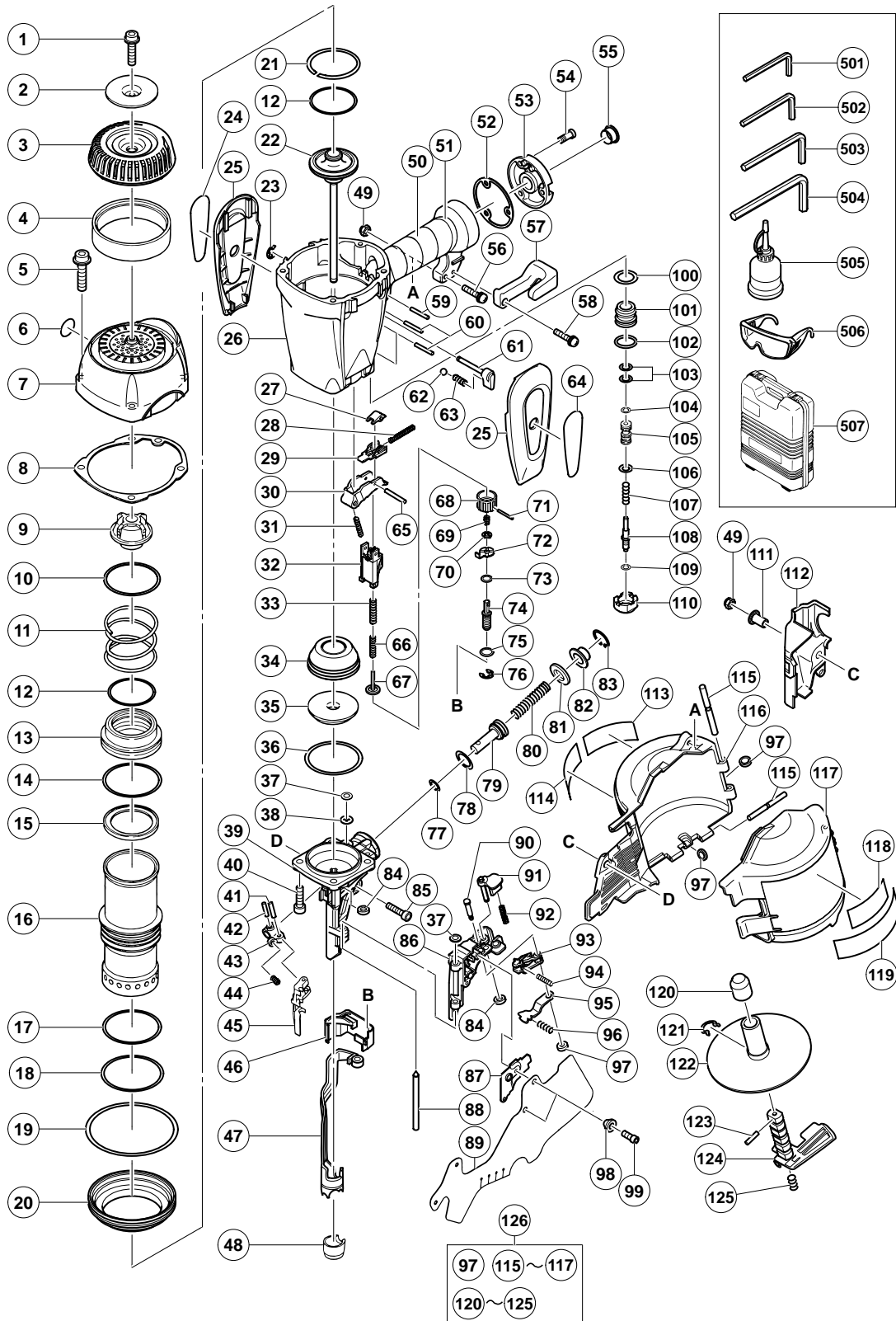
PNEUMATIC TOOL PARTS LIST

COIL NAILER

2005 • 1 • 20

Model NV 90AB2

(E1)



PARTS

NV 90AB2

ITEM NO.	CODE NO.	DESCRIPTION	NO. USED	REMARKS
1	881-969	NYLOCK BOLT (W/FLANGE) M6X20	1	
2	883-321	PLATE	1	
3	883-319	TOP COVER	1	
4	883-320	MUFFLER (A)	1	
5	318-451	NYLOCK BOLT (W/FLANGE) M6X35	4	
6	883-513	WARNING LABEL (A)	1	
7	884-397	EXHAUST COVER	1	
8	883-317	PACKING	1	
9	881-945	EXHAUST VALVE RUBBER	1	
10	883-328	WASHER	1	
11	881-944	HEAD VALVE SPRING	1	
12	877-124	CYLINDER O-RING (B)	2	
13	881-942	HEAD VALVE	1	
14	877-312	CYLINDER O-RING (I.D 63.1)	1	
15	881-943	HEAD VALVE RUBBER	1	
16	883-310	CYLINDER	1	
17	883-312	PLATE O-RING (B)	1	
18	883-311	CYLINDER O-RING	1	
19	883-314	PLATE O-RING (A)	1	
20	883-327	CYLINDER PLATE	1	
21	881-930	PISTON RING	1	
22	883-290	PISTON (H)	1	
23	968-643	RETAINING RING (E-TYPE) FOR D4 SHAFT	1	
24		HITACHI LABEL (R)	1	
25	884-394	PROTECTOR	2	
26	884-396	BODY ASS'Y	1	INCLUD. 50, 51
27	882-896	TRIGGER PIECE	1	
28	882-897	SPRING	1	
29	882-895	TRIGGER ARM (B)	1	
30	882-894	TRIGGER	1	
31	883-759	TRIGGER SPRING	1	
32	882-885	PUSHING LEVER GUIDE	1	
33	884-398	PUSHING LEVER SPRING (C)	1	
34	883-291	PISTON BUMPER (A)	1	
35	881-967	PISTON BUMPER (B)	1	
36	956-996	O-RING (1AS-60)	1	
37	874-436	O-RING (P-4)	2	
38	878-964	WASHER	1	
39	883-293	NOSE	1	
40	306-437	NYLOCK HEX. SOCKET HD. BOLT M8X30	4	
41	883-093	PLUNGER (B)	1	
42	949-497	ROLL PIN D4X16 (10 PCS.)	1	
43	883-144	FEEDER ARM (B)	1	
44	883-143	FEEDER SPRING	1	
45	883-299	FEEDER (A)	1	
46	883-307	PUSHING LEVER COVER (B)	1	
47	883-303	PUSHING LEVER (A)	1	
48	883-106	NOSE CAP (A)	1	
49	877-371	NYLON NUT M5	2	
50	881-768	GRIP TAPE (A)	1	
51	880-407	TAPE	2	

PARTS

NV 90AB2

ITEM NO.	CODE NO.	DESCRIPTION	NO. USED	REMARKS
52	883-309	GASKET (B)	1	
53	881-949	CAP	1	
54	949-821	HEX. SOCKET HD. BOLT M5X16 (10 PCS.)	3	
55	872-035	DUST CAP	1	
56	880-881	MACHINE SCREW (W/WASHERS) M5X30 (BLACK)	1	
57	881-827	HOOK	1	
58	880-734	MACHINE SCREW (W/WASHERS) M5X25 (BLACK)	1	
59	949-865	ROLL PIN D3X28 (10 PCS.)	1	
60	949-866	ROLL PIN D3X30 (10 PCS.)	3	
61	884-400	LOCK KNOB	1	
62	959-148	STEEL BALL D3.175 (10 PCS.)	1	
63	882-923	LOCK SPRING	1	
64		HITACHI LABEL (L)	1	
65	881-951	ROLL PIN D2.5X16	1	
66	884-399	PUSHING LEVER SPRING (D)	1	
67	882-891	PUSHING LEVER (C)	1	
68	882-889	ADJUSTER	1	
69	882-890	ADJUSTER SPRING	1	
70	882-887	ADJUSTER PLATE (B)	1	
71	880-093	ROLL PIN D2X16	1	
72	882-886	ADJUSTER PLATE (A)	1	
73	981-317	O-RING (S-4)	1	
74	882-888	PUSHING LEVER (B)	1	
75	883-304	PUSHING LEVER O-RING	1	
76	872-971	RETAINING RING (E-TYPE) FOR D3 SHAFT	1	
77	872-645	O-RING (P-9)	1	
78	944-486	O-RING (1AP-20)	1	
79	883-300	FEED PISTON	1	
80	883-301	FEED SPRING	1	
81	877-711	BUMPER	1	
82	880-331	FEED PISTON COVER	1	
83	939-555	RETAINING RING FOR D28 HOLE (10 PCS.)	1	
84	880-319	SHAFT RING	2	
85	949-757	HEX. SOCKET HD. BOLT M5X20 (10 PCS.)	1	
86	883-294	NAIL GUIDE	1	
87	883-295	NAIL GUIDE COVER	1	
88	883-298	NAIL GUIDE SHAFT	1	
89	883-296	COVER	1	
90	883-297	SHAFT	1	
91	880-318	GUIDE LOCK	1	
92	880-446	SPRING	1	
93	883-329	NAIL STOPPER (A)	1	
94	883-088	STOPPER SPRING (A)	1	
95	883-086	NAIL STOPPER (B)	1	
96	883-087	STOPPER SPRING (B)	1	
97	877-826	FEEDER SHAFT RING	3	
98	878-337	SLEEVE (B)	2	
99	880-413	NYLOCK HEX. SOCKET HD. BOLT M4X10	2	
100	877-699	HEAD VALVE O-RING (I.D 16.8)	1	
101	878-881	VALVE BUSHING (B)	1	
102	878-885	O-RING (S-18)	1	

PARTS

NV 90AB2

ITEM NO.	CODE NO.	DESCRIPTION	NO. USED	REMARKS
103	878-925	O-RING (I.D 8.8)	2	
104	981-317	O-RING (S-4)	1	
105	880-672	VALVE PISTON (B)	1	
106	878-887	O-RING (I.D 11)	1	
107	878-884	PLUNGER SPRING	1	
108	882-921	PLUNGER (A)	1	
109	878-888	O-RING (I.D 1.8)	1	
110	882-920	VALVE BUSHING (A)	1	
111	882-907	SLEEVE	1	
112	883-306	PUSHING LEVER COVER (A)	1	
113	878-183	WARNING LABEL	1	
114	884-070	WARNING LABEL	1	
115	883-111	PIN	2	
116	883-108	MAGAZINE	1	
117	883-109	MAGAZINE COVER	1	
118		NAME PLATE	1	
119		CAUTION PLATE (B)	1	
120	881-003	HOLDER CAP (A)	1	
121	880-398	RATCHET SPRING	1	
122	880-503	NAIL HOLDER	1	
123	878-791	ROLL PIN D2.5X12	1	
124	883-324	HOLDER SHAFT	1	
125	881-826	SPRING	1	
126	883-325	MAGAZINE ASS'Y	1	INCLUD. 97, 115-117, 120-125

STANDARD ACCESSORIES

ITEM NO.	CODE NO.	DESCRIPTION	NO. USED	REMARKS
501	943-277	HEX. BAR WRENCH 3MM	1	
502	944-458	HEX. BAR WRENCH 4MM	1	
503	944-459	HEX. BAR WRENCH 5MM	1	
504	872-422	HEX. BAR WRENCH 6MM	1	
505	877-153	PNEUMATIC TOOL LUBRICANT (30CC)	1	
506	875-769	SAFETY GLASSES	1	
507	883-323	CASE	1	

OPTIONAL ACCESSORIES

ITEM NO.	CODE NO.	DESCRIPTION	NO. USED	REMARKS
601	883-330	FULL SEQUENTIAL ACTUATION MECHANISM KIT	1	