

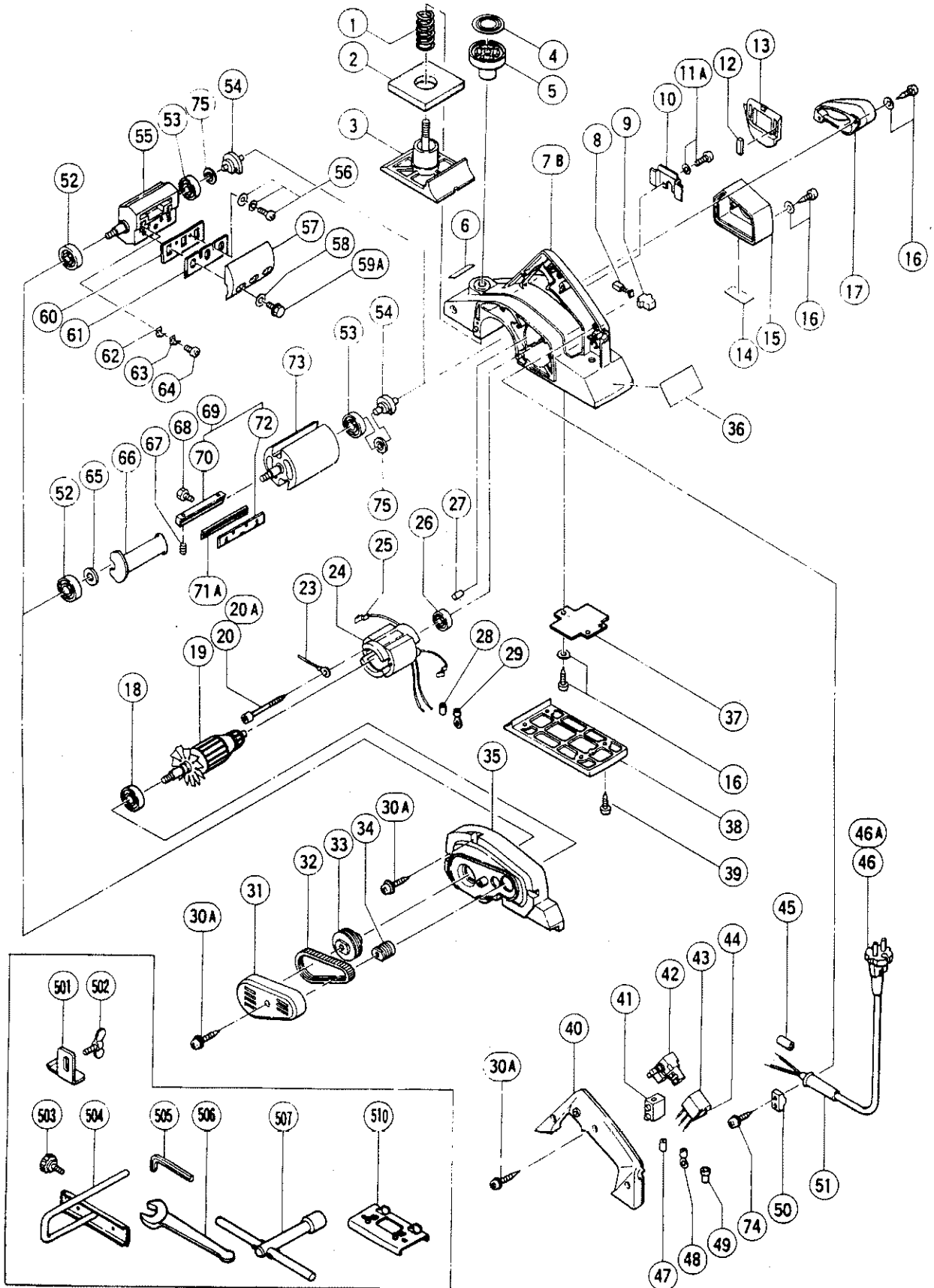
ELECTRIC TOOL PARTS LIST

PLANER

1993 · 10 · 1

Model P 20SA

(E4)



PARTS

P 20SA

ITEM NO.	CODE NO.	DESCRIPTION	NO. USED	REMARKS
1	958-709	SPRING	1	
2	958-708	RUBBER PACKING	1	
3	958-831Z	FRONT BASE	1	
4	958-832Z	SCALE	1	
5	942-328	KNOB	1	
6	957-561	HITACHI LABEL	1	
7B	990-658	HOUSING ASS'Y	1	INCLUD.20A
8	999-041	CARBON BRUSH (1 PAIR)	2	
9	955-203	BRUSH HOLDER	2	
10	958-838Z	COVER	1	
11A	951-039	MACHINE SCREW (W/SP. WASHER) M4X12	2	
12	958-839Z	MAGNET	2	
13	958-837Z	BLADE COVER	1	
14		CAUTION PLATE	1	
15	958-835Z	TAIL COVER	1	
16	930-448	TAPPING SCREW (W/WASHER) D4X16	5	
17	958-836Z	CHIP GUIDE	1	
18	620-0VV	BALL BEARING 6200VVCMP2S	1	
19	990-652C	ARMATURE 110V - 127V	1	
19	990-652E	ARMATURE 220V - 230V	1	
19	990-652F	ARMATURE 240V	1	
20	990-668	MACHINE SCREW (W/WASHERS) M4X65	2	TILL 8.1987
20A	963-712	HEX. HD. TAPPING SCREW D4X65	2	SINCE 9.1987
23	958-970Z	INTERNAL WIRE	1	FOR SUI
23	958-971	INTERNAL WIRE	1	FOR FIN
24	990-651C	STATOR ASS'Y 110V - 127V	1	INCLUD.25,29
24	990-651E	STATOR ASS'Y 220V - 230V	1	INCLUD.25,29
24	990-651F	STATOR ASS'Y 240V	1	INCLUD.25,29
24	990-651L	STATOR ASS'Y 220V - 230V	1	INCLUD.25 FOR SAF,FRA,HOL,DEN,NOR, FIN,SWE,AUT
24	990-651J	STATOR ASS'Y 220V - 230V	1	INCLUD.25 FOR ITA,FRG,SUI
24	990-651G	STATOR ASS'Y 230V	1	INCLUD.25 FOR NZL
24	990-651H	STATOR ASS'Y 240V	1	INCLUD.25,28 FOR AUS
24	990-651M	STATOR ASS'Y 240V	1	INCLUD.25 FOR GBR
24	990-651K	STATOR ASS'Y 110V	1	INCLUD.25 FOR GBR
25	941-615	BRUSH TERMINAL	2	
25	958-857Z	BRUSH TERMINAL	2	FOR SAF,FRA,HOL,DEN,NOR,FIN,SWE,AUT
26	608-VVM	BALL BEARING 608VVMC2EPS2L	1	
27	963-227	BEARING LOCK	1	
28	981-373	TUBE (D)	2	FOR AUS
29	980-063	TERMINAL	1	
30A	306-999	TAPPING SCREW (W/FLANGE) D4X25	8	
31	958-830Z	BELT COVER	1	
32	990-662	BELT	1	
33	990-661	PULLEY (B)	1	
34	990-660	PULLEY (A)	1	
35	990-659	END BRACKET	1	
36		NAME PLATE	1	
37	958-844Z	PLATE	1	
38	958-833Z	REAR BASE	1	
39	954-004	TAPPING SCREW D4X16	4	

*: ALTERNATIVE PARTS

PARTS

P 20SA

ITEM NO.	CODE NO.	DESCRIPTION	NO. USED	REMARKS
* 40	958-854Z	HANDLE COVER	1	
* 40	958-859Z	HANDLE COVER	1	FOR GBR,FIN,SWE
* 41	938-307Z	PILLAR TERMINAL	1	FOR FIN
* 42	957-747	SWITCH (A) (1P SCREW TYPE) W/LOCK	1	
* 42	971-667Z	SWITCH (2P PILLAR TYPE) W/LOCK	1	FOR NZL,AUS,SAF,ITA,FRG,HOL,DEN,AUT, NOR,SUI
* 42	958-400Z	SWITCH (2P PILLAR TYPE) W/O LOCK	1	FOR GBR,FIN,SWE
* 42	963-756Z	SWITCH (2P PILLAR TYPE) W/SAFETY LOCK	1	FOR FRA
* 43	930-153	SUPPORT (B)	1	FOR FIN
* 44	994-273	NOISE SUPPRESSOR	1	
* 45	981-373	TUBE (D)	2	FOR CORD
* 46	500-212Z	CORD	1	(CORD ARMOR D8.2)
* 46	500-223Z	CORD	1	(CORD ARMOR D10.2) FOR SIN,KUW
* 46	500-226Z	CORD	1	(CORD ARMOR D8.2) FOR AUS,NZL,NGU
* 46	500-234Z	CORD	1	(CORD ARMOR D8.2) FOR ITA,FRG,FRA
* 46	500-245Z	CORD	1	(CORD ARMOR D10.2) FOR SYR
* 46	500-247Z	CORD	1	(CORD ARMOR D10.2) FOR HOL,DEN,NOR, FIN,SWE,AUT
* 46	500-248Z	CORD	1	(CORD ARMOR D10.2) FOR SUI
* 46	500-420Z	CORD	1	(CORD ARMOR D10.2) FOR SAU (127V)
* 46	500-423Z	CORD	1	(CORD ARMOR D8.2) FOR SAU (220V)
* 46	958-271Z	CORD	1	(CORD ARMOR D8.2) FOR GBR (110V),SAF
* 46A	500-435Z	CORD	1	(CORD ARMOR D8.2) FOR GBR (240V)
* 47	981-373	TUBE (D)	2	FOR NOISE SUPPRESSOR
* 48	980-063	TERMINAL	2	FOR NOISE SUPPRESSOR
* 49	959-140	CONNECTOR 50091 (10 PCS.)	1	
50	937-631	CORD CLIP	1	
* 51	930-487	CORD ARMOR D8.2	1	
* 51	930-026	CORD ARMOR D10.2	1	
* 51	980-193	CORD ARMOR D10.2	1	FOR SWE,AUT,NOR
52	620-1VV	BALL BEARING 6201VVCMP2S	1	
53	629-VVM	BALL BEARING 629VVMC2EPS2L	1	
54	958-824Z	SHAFT (B)	1	
* 55	958-849Z	CUTTER BLOCK ASS'Y (W/B.B)	1	FOR CARTRIDGE TYPE INCLUD.52 - 54, 62 - 64,75
* 56	986-723	MACHINE SCREW (W/WASHERS) M4X8	4	FOR CARTRIDGE TYPE
* 57	958-850Z	BLADE HOLDER (1 PAIR)	2	FOR CARTRIDGE TYPE
* 58	940-391	WASHER	6	FOR CARTRIDGE TYPE TILL 2.1987
* 59A	990-869	BOLT (W/WASHER) M8X18	6	FOR CARTRIDGE TYPE
* 60	958-733Z	BACK METAL	2	FOR CARTRIDGE TYPE
* 61	879-418	PLANER BLADES (1 PAIR)	2	FOR CARTRIDGE TYPE
* 62	958-732Z	GUARD PLATE (A)	4	FOR CARTRIDGE TYPE
* 63	858-731Z	HOLDER SPRING (B)	4	FOR CARTRIDGE TYPE
* 64	949-214	MACHINE SCREW M4X8 (10 PCS.)	4	FOR CARTRIDGE TYPE
* 65	944-954	BEARING WASHER	1	FOR ADJUST SCREW TYPE
* 66	990-665	INSERT PIECE	2	FOR ADJUST SCREW TYPE
* 67	938-477	HEX. SOCKET SET SCREW M5X8	4	FOR ADJUST SCREW TYPE
* 68	963-472Z	BOLT M5	6	FOR ADJUST SCREW TYPE
* 69	990-667	BLADE HOLDER ASS'Y (2 SET)	2	FOR ADJUST SCREW TYPE INCLUD.70,72
* 70	990-654	BLADE HOLDER (A) (1 PAIR)	2	FOR ADJUST SCREW TYPE
* 71A	879-418	PLANER BLADES (1 PAIR)	2	FOR ADJUST SCREW TYPE

*: ALTERNATIVE PARTS

