

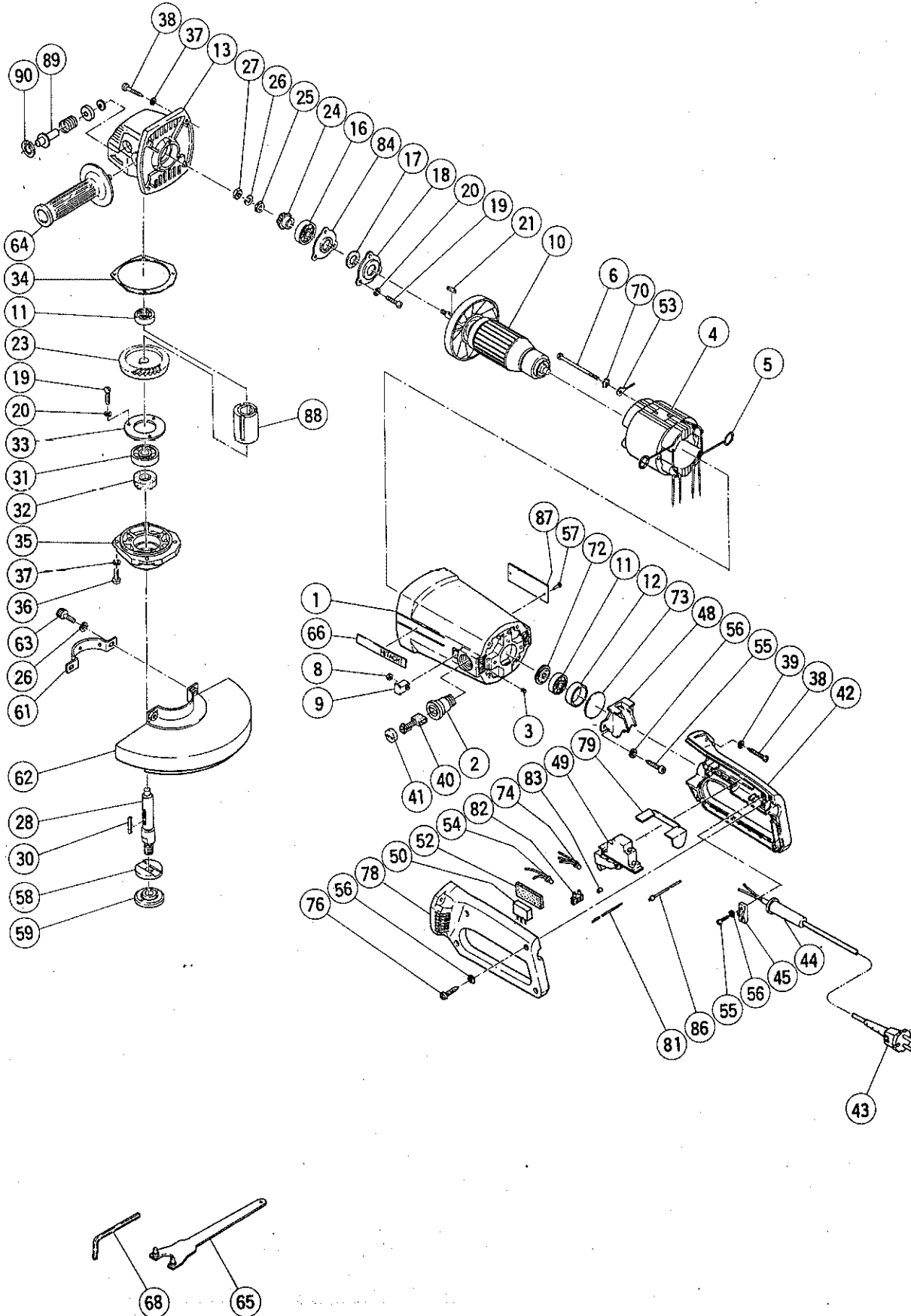
ELECTRIC TOOL PARTS LIST

■ DISC GRINDER

1987-11-15

Model PDM-230L

PDM-230L(E3)



PARTS

PDM-230L(E3)

Item No.	Code No.	Part Name	Q'ty	Remarks
1	—	Housing Ass'y	1	See alternative parts
2	—	Brush Holder	2	See alternative parts
3	949365	Slotted Set Screw M4 x 5	2	(10 pcs.)
4	—	Stator Ass'y	1	See alternative parts
5	958032	Brush Terminal	2	
6	938100	Bolt M5 x 70	2	
8	949555	Nut M5	2	(10 pcs.)
9	937892	Nut Cover	2	
10	—	Armature Ass'y	1	See alternative parts
11	939220	Ball Bearing (6200VVCM)	2	
12	937894	Bearing Bushing	1	
13	938106Z	Gear Cover Ass'y	1	includ. 89, 90
16	939250	Ball Bearing (6301VVCM)	1	
17	936853	Felt Packing (A)	1	
18	937896	Bearing Cover (A)	1	
19	949236	Machine Screw M5 x 10	6	(10 pcs.)
20	949454	Spring Lock Washer	6	for M5 (10 pcs.)
21	940533	Feather Key 3 x 3 x 10	1	
22	937897	Gear Ass'y	1	includ. 23, 24
23	937898	Gear	1	
24	937899	Pinion	1	
25	937988	Pawl Washer	1	
26	949457	Spring Lock Washer	3	for M8 (10 pcs.)
27	949568	Lock Nut M8	1	(10 pcs.)
28	938095Z	Spindle	1	
30	948920	Feather Key 4 x 4 x 30	1	
31	939252	Ball Bearing (6302VVCM)	1	
32	938099	Felt Packing (B)	1	
33	937035	Bearing Cover (B)	1	
34	937901	Seal Packing (B)	1	
35	937902	Packing Gland	1	
36	949239	Machine Screw M5 x 16	4	(10 pcs.)
37	949454	Spring Lock Washer	8	for M5 (10 pcs.)
38	937807	Tapping Screw M5 x 25	8	
39	949424	Washer	4	for M5 (10 pcs.)
40	—	Carbon Brush	2	See alternative parts
41	—	Brush Cap	2	See alternative parts
42	981005	Handle (A)	1	
43	—	Cord	1	See alternative parts
44	—	Cord Armor	1	See alternative parts
45	960266	Cord Clip	1	
48	937905	Bearing Cover	1	
49	—	Switch	1	See alternative parts
50	—	Noise Suppressor	1	See alternative parts
52	—	Support (B)	1	See alternative parts
53	—	Internal Wire	1	See alternative parts
54	—	Connector	1	See alternative parts
55	954004	Tapping Screw D4 x 16	5	
56	949423	Washer	9	for M4 (10 pcs.)
57	949510	Rivet D2.5 x 4.8	2	(10 pcs.)
58	—	Wheel Washer	1	See alternative parts
59	937909Z	Wheel Nut	1	
61	937911	Set Ring (A)	1	

PARTS

PDM-230L(E3)

Item No.	Code No.	Part Name	Q'ty	Remarks
62	937912Z	Wheel Guard Ass'y	1	
63	949656	Hexagon Socket Hd. Bolt M8 x 20	2	(10 pcs.)
64	937981Z	Side Handle	1	
65	937913Z	Wrench (B)	1	
66	938098	HITACHI Label	1	
68	872422	Hexagon Bar Wrench 6 mm	1	for M8 bolt
70	956764	Special Washer	2	
72	955260	Dust Seal (A)	1	
73	937946	Bearing Seal	1	
74	959141	Connector (50092)	1	(10 pcs.)
76	956384	Tapping Screw D4 x 20	4	
78	981006	Handle (B)	1	
79	981007	Switch Adapter	1	
81	—	Internal Wire	1	See alternative parts
82	—	Pillar Terminal	1	See alternative parts
83	—	Tube (D)	2	See alternative parts
84	—	Distance Plate	1	See alternative parts
86	—	Band	1	See alternative parts
87	—	Name Plate	1	
88	938096	Sleeve	1	
89	938094	Lock Pin	1	
90	948011	C-Type Retaining Ring	1	for I.D. 16 Hole

ALTERNATIVE PARTS

Item No.	Code No.	Part Name	Q'ty	Remarks
1	938090	Housing Ass'y	1	includ. 2, 3
	938132Z	Housing Ass'y	1	for Austria includ. 2, 3
2	980487	Brush Holder	2	
	937948Z	Brush Holder	2	for Austria
4	981030E	Stator Ass'y 220V	1	includ. 5
	981030G	Stator Ass'y 220V	1	for Netherlands, Denmark, Finland, Sweden, Austria, Norway includ. 5
10	938104E	Armature Ass'y 220V	1	includ. 11, 72
	938104G	Armature Ass'y 220V	1	for Netherlands, Denmark, Finland, Sweden, Austria, Norway includ. 11, 72
40	999044	Carbon Brush	2	(2 pcs.)
	937943Z	Carbon Brush	2	Auto stop type (2 pcs.)
41	940540	Brush Cap	2	
	937949	Brush Cap	2	for Austria
43	500245Z	Cord	1	for Syria (Cord Armor D10.7)
	500247Z	Cord	1	for Europe (Cord Armor D10.7)
44	940778	Cord Armor D10.7	1	

