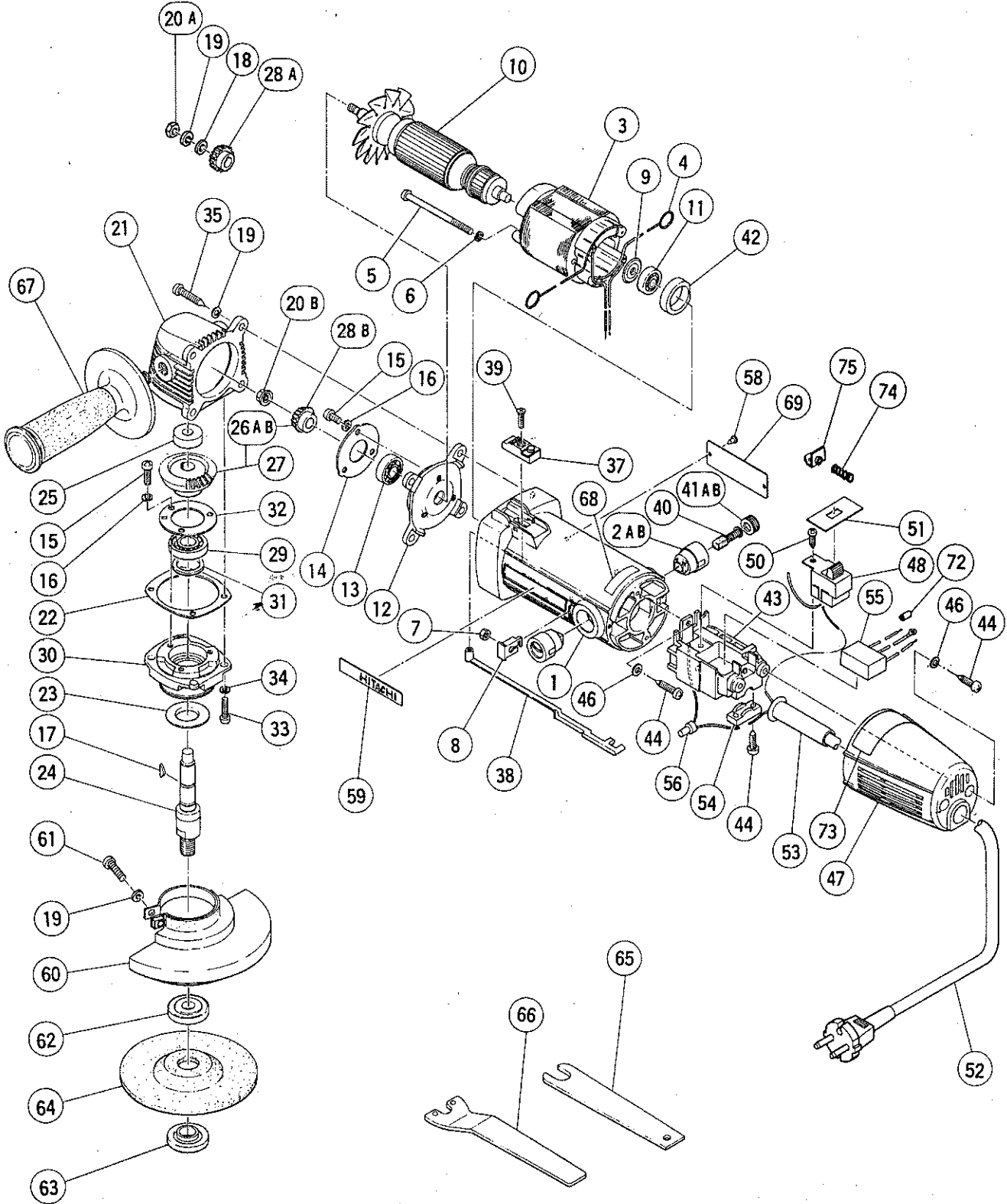


## ELECTRIC TOOL PARTS LIST

■ 115mm DISC DRINDER  
Model PDP-115

1986·6·20  
PDP-115(E5)



## PARTS

PDP-115(E5)

Item No.	Code No.	Part Name	Q'ty	Remarks
1	937800	Housing Ass'y	1	includ. 2B, 41B
2A	957571	Brush Holder	2	till 4, 1979
2B	937846	Brush Holder	2	since 5, 1979
3	—	Stator Ass'y	1	See alternative parts
4	930630	Brush Terminal	2	
5	930176	Machine Screw M4 x 65	2	
6	949453	Spring Lock Washer	2	for M4 (10 pcs.)
7	949554	Nut M4	2	(10 pcs.)
8	937802	Nut Cover	2	
9	937706	Dust Seal	1	
11	939388	Ball Bearing (626VC2)	1	
12	937124	Inner Cover	1	
13	939291	Ball Bearing (608VVC2)	1	
14	937125	Bearing Cover (A)	1	
15	949216	Machine Screw M4 x 10	6	(10 pcs.)
16	949453	Spring Lock Washer	6	for M4 (10 pcs.)
17	940220	Woodruff Key 2.5 x 8	1	till 8, 1981
18	949424	Washer	1	till 8, 1981 (10 pcs.)
19	949454	Spring Lock Washer	5	till 8, 1981 (10 pcs.)
20A	949566	Lock Nut M5	1	till 8, 1981 (10 pcs.)
20B	938071	Flange Nut M6	1	since 9, 1981
21	980770	Gear Cover	1	
22	936682	Seal Packing	1	
23	937136	Fringer	1	
24	937805Z	Spindle	1	
25	935522	Metal Bushing	1	
26A	936694	Gear	1	till 8, 1981 includ. 27, 28A
26B	937861	Gear	1	since 9, 1981 includ. 27, 28A
27	936678	Gear	1	
28A	936673	Pinion	1	till 8, 1981
28B	938047	Pinion	1	since 9, 1981
29	939387	Ball Bearing (6001VVCM)	1	
30	937806Z	Packing Gland	1	
31	937135	Felt Packing	1	
32	938058	Bearing Cover (B)	1	
33	949239	Machine Screw M5 x 16	4	(10 pcs.)
34	949454	Spring Lock Washer	4	for M5 (10 pcs.)
35	937807	Tapping Screw D5 x 25	4	
37	937808	Slide Switch Knob	1	
38	937809	Slide Bar	1	
39	949317	Flat Hd. Screw M3 x 10	1	(10 pcs.)
40	999021	Carbon Brush	2	(2 pcs.)
41A	931266	Brush Cap	2	till 4, 1979
41B	937847	Brush Cap	2	since 5, 1979
42	937810	Bearing Bushing	1	
43	937811	Switch Holder	1	
44	954004	Tapping Screw D4 x 16	6	
46	949423	Washer	4	for M4 (10 pcs.)
47	937812	Tail Cover	1	
48	—	Switch	1	See alternative parts
50	954017	Tapping Screw D4 x 12	1	
51	937815	Switch Cover	1	
52	—	Cord	1	See alternative parts

## PARTS

PDP-115(E5)

Item No.	Code No.	Part Name	Q'ty	Remarks
53	—	Cord Armor	1	See alternative parts
54	937631	Cord Clip	1	
55	—	Noise Suppressor	1	See alternative parts
56	—	Connector	1	See alternative parts
57	—	Special Washer	1	See alternative parts
58	—	Rivet	1	See alternative parts
59	957561	HITACHI Label	1	
60	937816Z	Wheel Guard (A)	1	
61	949240	Hd. Machine Screw M5 x 18	1	(10 pcs.)
62	—	Wheel Washer	1	See alternative parts
63	937818Z	Wheel Nut	1	
64	—	Resinoid Wheel 115 mm	1	See optional accessories
65	873929	Wrench (A)	1	
66	937820Z	Wrench (B)	1	
67	956633	Side Handle	1	
68	—	Caution Plate	1	See alternative parts
69	—	Name Plate	1	
70	—	Terminal (A)	1	See alternative parts
71	—	Terminal	1	See alternative parts
72	—	Tube (D)	1	See alternative parts
73	—	Caution Plate	1	See alternative parts
74	—	Spring (A)	1	See alternative parts
75	—	Plate	1	See alternative parts

## ALTERNATIVE PARTS

Item No.	Code No.	Part Name	Q'ty	Remarks
3	937801C	Stator Ass'y 110V ~ 115V	1	includ. 4
	937801D	Stator Ass'y 120V ~ 127V	1	includ. 4
	937801E	Stator Ass'y 220V ~ 230V	1	includ. 4
	937801F	Stator Ass'y 240V	1	includ. 4
	937801G	Stator Ass'y 230V	1	includ. 4 for N.Z.
	937801H	Stator Ass'y 240V	1	includ. 4 for Australia
	937801L	Stator Ass'y 220V	1	includ. 4 for Europe
	937829E	Stator Ass'y 220V	1	includ. 4 for F.R. Germany
10	937849C	Armature Ass'y 110V ~ 115V	1	includ. 20B
	937849D	Armature Ass'y 120V ~ 127V	1	includ. 20B
	937849E	Armature Ass'y 220V ~ 230V	1	includ. 20B
	937849F	Armature Ass'y 240V	1	includ. 20B
48	937813	Single Pole Switch (Screw Type)	1	
	937814Z	Double Pole Switch (Screw Type)	1	
	980778	Double Pole Switch (Pillar Type)	1	
52	500201Z	Cord	1	for Asia (Cord Armor D10.2)
	500226Z	Cord	1	for Oceania (Cord Armor D8.2)
	500223Z	Cord	1	for Singapore (Cord Armor D10.2)
	500231Z	Cord	1	for S. Africa (Cord Armor D8.2)
	500234Z	Cord	1	for Europe (Cord Armor D8.2)
	500240Z	Cord	1	for America (Cord Armor D8.2)

## ALTERNATIVE PARTS

PDP-115(E5)

Item No.	Code No.	Part Name	Q'ty	Remarks
53	930026	Cord Armor D10.2	1	
53	930487	Cord Armor D8.2	1	
55	500261Z	Noise Suppressor	1	
	500262Z	Noise Suppressor	1	for Finland
	981372	Noise Suppressor	1	for N.Z., Denmark
56	959140	Connector (50091)	1	(10 pcs.)
57	500326	Special Washer	1	
58	932642	Rivet D2.5 x 2.8	2	
62	937817Z	Wheel Washer	1	
	937827Z	Wheel Washer (B)	1	for Australia
	938334Z	Wheel Washer (B)	1	for U.K.
68	937822Z	Caution Plate	1	
	—	Caution Plate	1	for Canada
70	960356	Terminal D3.5	1	for cord (10 pcs.)
71	959144	Terminal (50051) D4	1	for noise suppressor (10 pcs.)
72	981373	Tube (D)	2	
73	955870Z	Caution Plate	1	for Australia
74	958094Z	Spring (A)	1	
75	958095Z	Plate	1	

## OPTIONAL ACCESSORIES

Item No.	Code No.	Part Name	Q'ty	Remarks
	937127	Thrust Washer (A)	1	
	937819Z	Resinoid Wheel 115 mm	1	(10 pcs.)
	937828Z	Case		
	937825Z	Rubber Pad	1	
	937826Z	Washer Nut	1	
	938000Z	Sanding Disc CC#16	1	(10 pcs.)
	938001Z	Sanding Disc CC#20	1	(10 pcs.)
	938002Z	Sanding Disc CC#24	1	(10 pcs.)
	938003Z	Sanding Disc CC#30	1	(10 pcs.)
	938004Z	Sanding Disc CC#36	1	(10 pcs.)
	938005Z	Sanding Disc CC#40	1	(10 pcs.)
	938006Z	Sanding Disc CC#50	1	(10 pcs.)
	938007Z	Sanding Disc CC#60	1	(10 pcs.)
	938008Z	Sanding Disc CC#80	1	(10 pcs.)
	938009Z	Sanding Disc CC#100	1	(10 pcs.)
	938010Z	Sanding Disc CC#120	1	(10 pcs.)