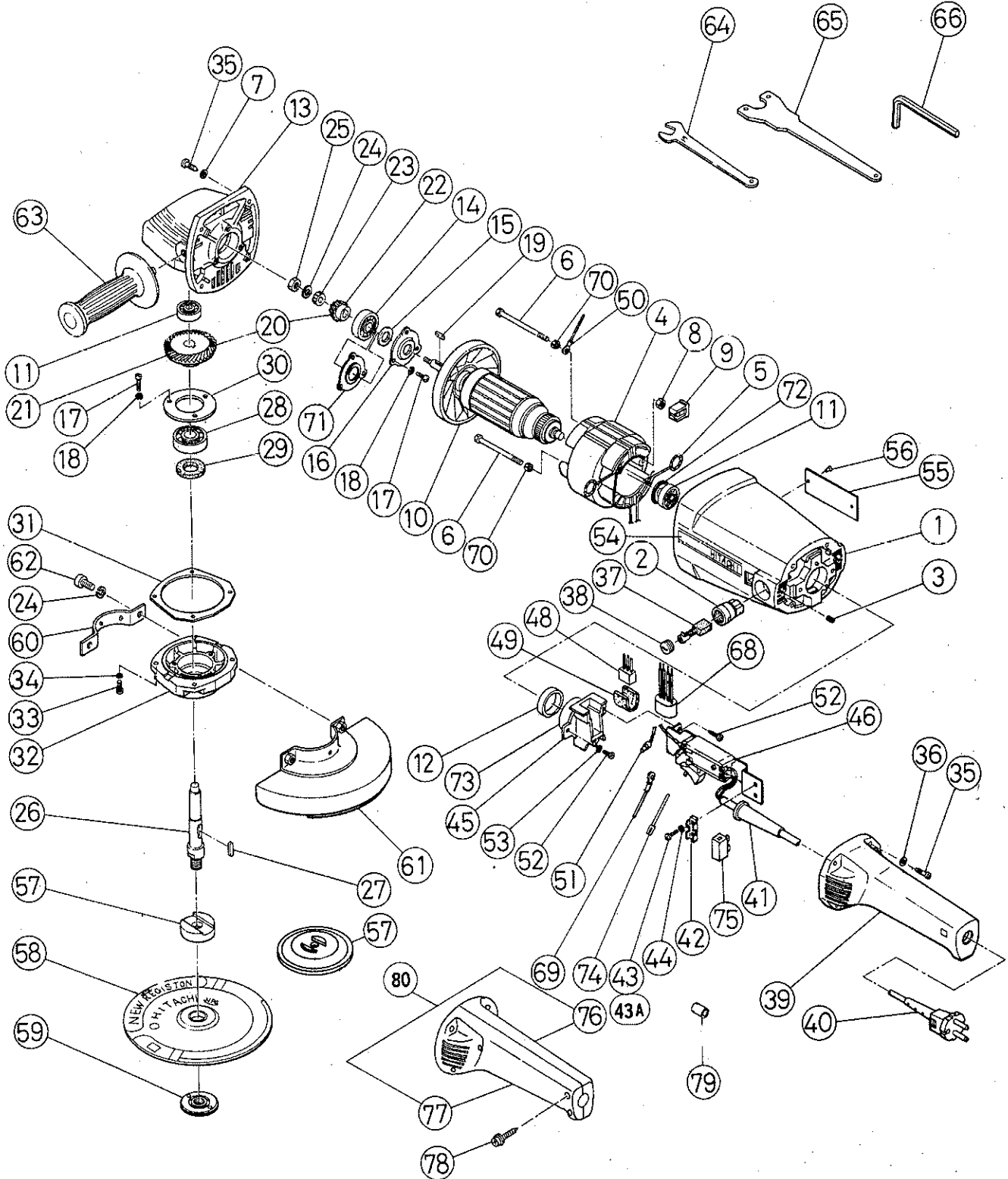


## ELECTRIC TOOL PARTS LIST

■ DISC GRINDER  
Model PDU-180

1987·11·15  
PDU-180(E7)



## PARTS

PDU-180(E7)

Item No.	Code No.	Part Name	Q'ty	Remarks
1	—	Housing Ass'y	1	See alternative parts
2	—	Brush Holder	2	See alternative parts
3	949365	Slotted Set Screw M4 x 5	2	(10 pcs.)
4	—	Stator Ass'y	1	See alternative parts
5	958032	Brush Terminal	2	
6	937925	Bolt M5 x 80	2	
7	949454	Spring Lock Washer	4	for M5 (10 pcs.)
8	949555	Nut M5	2	(10 pcs.)
9	937892	Nut Cover	2	
10	—	Armature Ass'y	1	See alternative parts
11	939220	Ball Bearing (6200VVCM)	2	
12	937894	Bearing Bushing	1	
13	937982Z	Gear Cover	1	
14	939250	Ball Bearing (6301VVCM)	1	
15	936853	Felt Packing (A)	1	
16	937896	Bearing Cover (A)	1	
17	949236	Machine Screw M5 x 10	6	(10 pcs.)
18	949454	Spring Lock Washer	6	for M5 (10 pcs.)
19	940533	Feather Key 3 x 3 x 10	1	
20	937930Z	Gear Ass'y	1	includ. 21, 22
21	937931Z	Gear	1	
22	937932Z	Pinion	1	
23	937988	Pawl Washer	1	
24	949457	Spring Lock Washer	3	for M8 (10 pcs.)
25	949568	Lock Nut M8	1	(10 pcs.)
26	—	Spindle	1	See alternative parts
27	948919	Feather Key 4 x 4 x 15	1	
28	939252	Ball Bearing (6301VVCM)	1	
29	938099	Felt Packing (B)	1	
30	937035	Bearing Cover (B)	1	
31	937901	Seal Packing (B)	1	
32	937902	Packing Gland	1	
33	949239	Machine Screw M5 x 16	4	(10 pcs.)
34	949454	Spring Lock Washer	4	for M5 (10 pcs.)
35	937807	Tapping Screw D5 x 25	8	
36	949424	Washer	4	for M5 (10 pcs.)
37	—	Carbon Brush	2	See alternative parts
38	—	Brush Cap	2	See alternative parts
39	—	Handle	1	See alternative parts
40	—	Cord	1	See alternative parts
41	—	Cord Armor	1	See alternative parts
42	—	Cord Clip	1	See alternative parts
43	—	Machine Screw	2	
44	949453	Spring Lock Washer	2	for M4 (10 pcs.)
45	—	Bearing Cover	1	See alternative parts
46	—	Switch	1	See alternative parts
47	—	Terminal	2	See alternative parts
48	—	Noise Suppressor	1	See alternative parts
49	—	Support (B)	1	See alternative parts
50	—	Internal Wire	1	See alternative parts
51	—	Connector	2	See alternative parts
52	954004	Tapping Screw D4 x 16	3	
53	949423	Washer	1	for M4 (10 pcs.)



## ALTERNATIVE PARTS

PDU-180(E7)

Item No.	Code No.	Part Name	Q'ty	Remarks
1	937890Z	Housing Ass'y	1	includ. 2, 3
	937947Z	Housing Ass'y	1	for Austria includ. 2, 3
2	980487	Brush Holder	2	
	937948Z	Brush Holder	2	for Austria
4	937891C	Stator Ass'y	110V ~ 120V	1 for U.S.A. till 7, 1981 for Canada till 9, 1983 includ. 5
	937941C	Stator Ass'y for U.K.	110V ~ 120V	1 for U.K. includ. 5
	937941E	Stator Ass'y for	220V ~ 230V	1 for N.Z., Austria for France since 10, 1982 Norway for Finland since 11, 1982 includ. 5
	937941G	Stator Ass'y	220V ~ 230V	1 includ. 5
	937941F	Stator Ass'y	240V	1 for U.K. includ. 5
	937941H	Stator Ass'y	240V	1 includ. 5
	937941D	Stator Ass'y	110V ~ 115V	1 since 8, 1981 includ. 5
	981682D	Stator Ass'y	110V ~ 120V	1 for U.S.A. since 8, 1981 for Canada since 10, 1983 includ. 5
	937941B	Stator Ass'y	120V ~ 127V	1 includ. 5
10	937942J	Armature Ass'y	110V ~ 120V	1 for U.K. includ. 11, 72
	937945C	Armature Ass'y	110V ~ 120V	1 includ. 11, 72
	937945E	Armature Ass'y	220V ~ 240V	1 includ. 11, 72
	937942G	Armature Ass'y	220V ~ 240V	1 for U.K., Denmark, Finland, Sweden, Austria includ. 11, 72
26	937900Z	Spindle		1 M14 x 2
	937920P	Spindle		1 5/8"-11 UNC
	937927Z	Spindle		1 M16 x 1.5 for Thailand
37	999044	Carbon Brush		2 (2 pcs.)
	937943Z	Carbon Brush		2 auto stop type (2 pcs.)
38	940540	Brush Cap		2
	937949	Brush Cap		2 for Austria
39	937903	Handle		1
	937980Z	Handle (B)		1 for U.S.A. till 7, 1981
	981686P	Handle (C)		1 for AC/DC Switch for U.S.A. since 8, 1981 for Canada since 10, 1983
40	500214Z	Cord		1 for Asia (Cord Armor D10.7)
	500226Z	Cord		1 for Oceania (Cord Armor D8.2)
	500223Z	Cord		1 for Singapore (Cord Armor D10.7)
	500231Z	Cord		1 for S. Africa (Cord Armor D8.2)
	500234Z	Cord		1 for Europe (Cord Armor D8.2)
	500242Z	Cord		1 for U.S.A. (Cord Armor D10.7)
	937937Z	Cord		1 for U.K. (Cord Armor D8.2)
41	958049Z	Cord Armor	D8.2	1
	940778	Cord Armor	D10.7	1
42	937904	Cord Clip		1
	960266	Cord Clip		1 for France since 10, 1982
43	949218	Machine Screw	M4 x 14	2 (10 pcs.)
43A	984750	Tapping Screw	D4 x 16	2 w/Flange for France since 10, 1982
45	937905	Bearing Cover		1
	937926Z	Bearing Cover		1 for N.Z.
46	937906	Double Pole Switch (Screw Type)		1 w/lock
	937921P	Double Pole Switch (Screw Type)		1 w/o lock till 7, 1981
	981204	Double Pole Switch (Pillar Type)		1 w/lock
	981685P	Double Pole Switch (Screw Type)		1 AC/DC w/o lock for U.S.A. since 8, 1981 for Canada since 10, 1983
	937985Z	Double Pole Switch (Pillar Type)		1 w/safety lock, for France since 10, 1982
	981684P	Double Pole Switch (Pillar Type)		1 w/o lock for Finland since 11, 1982

ALTERNATIVE PARTS

PDU-180(E7)

Item No.	Code No.	Part Name	Q'ty	Remarks
47	930804	Terminal	2	for noise suppressor (10 pcs.)
	959145	Terminal (50052)	2	for choke coil (10 pcs.)
48	971828Z	Noise Suppressor	1	for Finland, Austria
	500261Z	Noise Suppressor	1	
49	930153	Support (B)	1	for Noise Suppressor
50	937633	Internal Wire	1	
51	959140	Connector (50091)	2	(10 pcs.)
	959141	Connector (50092)	2	(10 pcs.)
57	937907Z	Wheel Washer (A)	1	D14
	937908Z	Wheel Washer (B)	1	ISO type (D14)
	937922P	Wheel Washer (B)	1	ISO type (D16)
	937928Z	Wheel Washer	1	D16 for Thailand
59	937909Z	Wheel Nut	1	M14 x 2
	937923P	Wheel Nut	1	5/8"-11 UNC
	937929Z	Wheel Nut	1	M16 x 1.5 for Thailand
61	937934Z	Wheel Guard	1	
	937960Z	Wheel Guard	1	for U.S.A., Canada
63	981205	Side Handle	1	for M10
	937981Z	Side Handle	1	for M14
68	500323	Choke Coil	1	for N.Z.
69	937939Z	Internal Wire	2	for pillar type switch
	937944Z	Internal Wire	2	
	—	Internal Wire	2	w/o lock, for Finland since 11, 1982
71	937940	Distance Plate	1	
74	983684	Band	3	
75	938307Z	Pillar Terminal	1	
76	937986	Bar Handle (A)	1	for France since 10, 1982
77	937987	Bar Handle (B)	1	for France since 10, 1982
78	982095	Tapping Screw D4 x 20	3	for France since 10, 1982
79	961820	Tube (D)	2	w/o lock, for Finland since 11, 1982
80	937990	Bar Handle Ass'y	1	includ. 76, 77

OPTIONAL ACCESSORIES

Item No.	Code No.	Part Name	Q'ty	Remarks
601	937917Z	Wheel Nut (B)	1	for Australia for cut-off wheel
602	937918Z	Inner Washer	1	for cut-off wheel
603	937919Z	Wheel Washer (C)	1	for cut-off wheel
604	937936Z	Grinding Wheel Set	1	for U.S.A.
605	937983Z	Fan	1	} Supply for Armature Ass'y } Produced before 12, 1978 with Fan Ass'y
606	970876Z	J-111 Press Fitting Jig	1	