

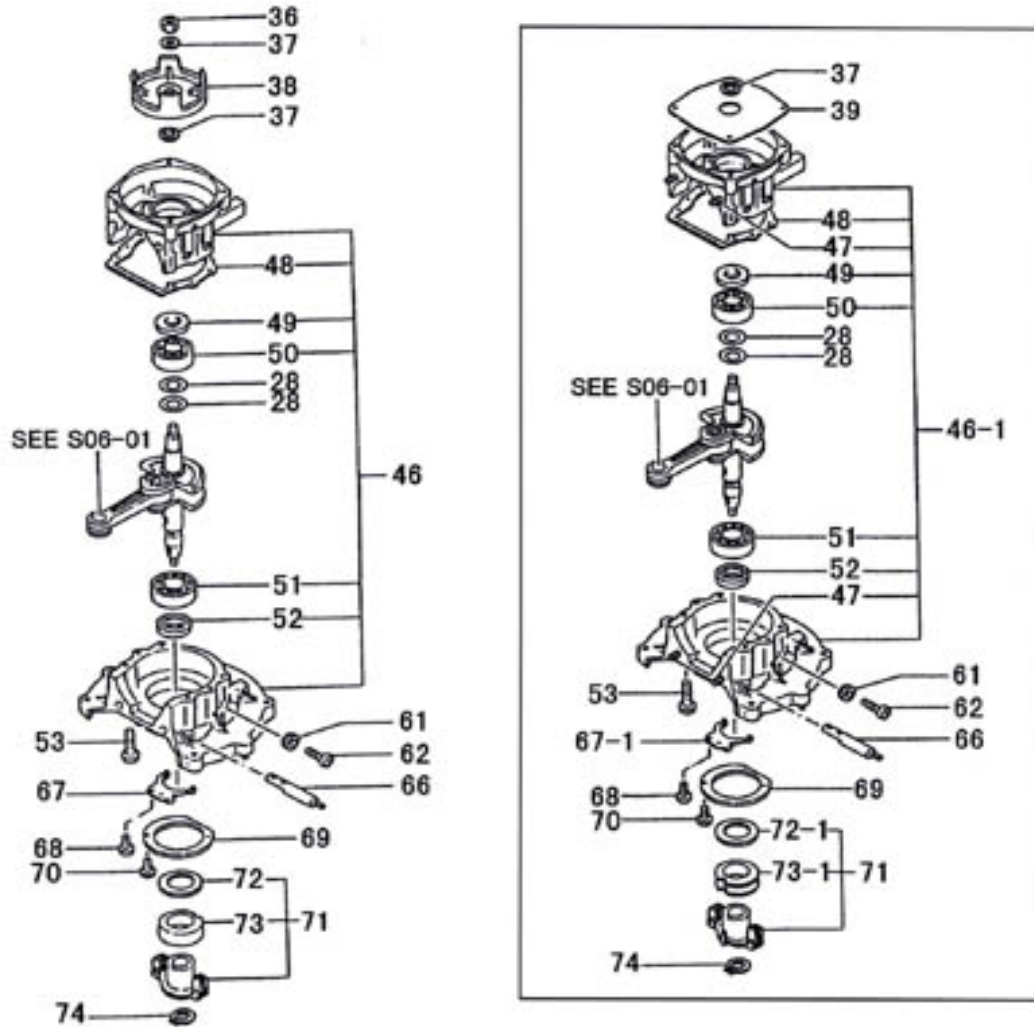
S06

Tanaka

TEA 500

S06
02

TEA-500 CRANK CASE

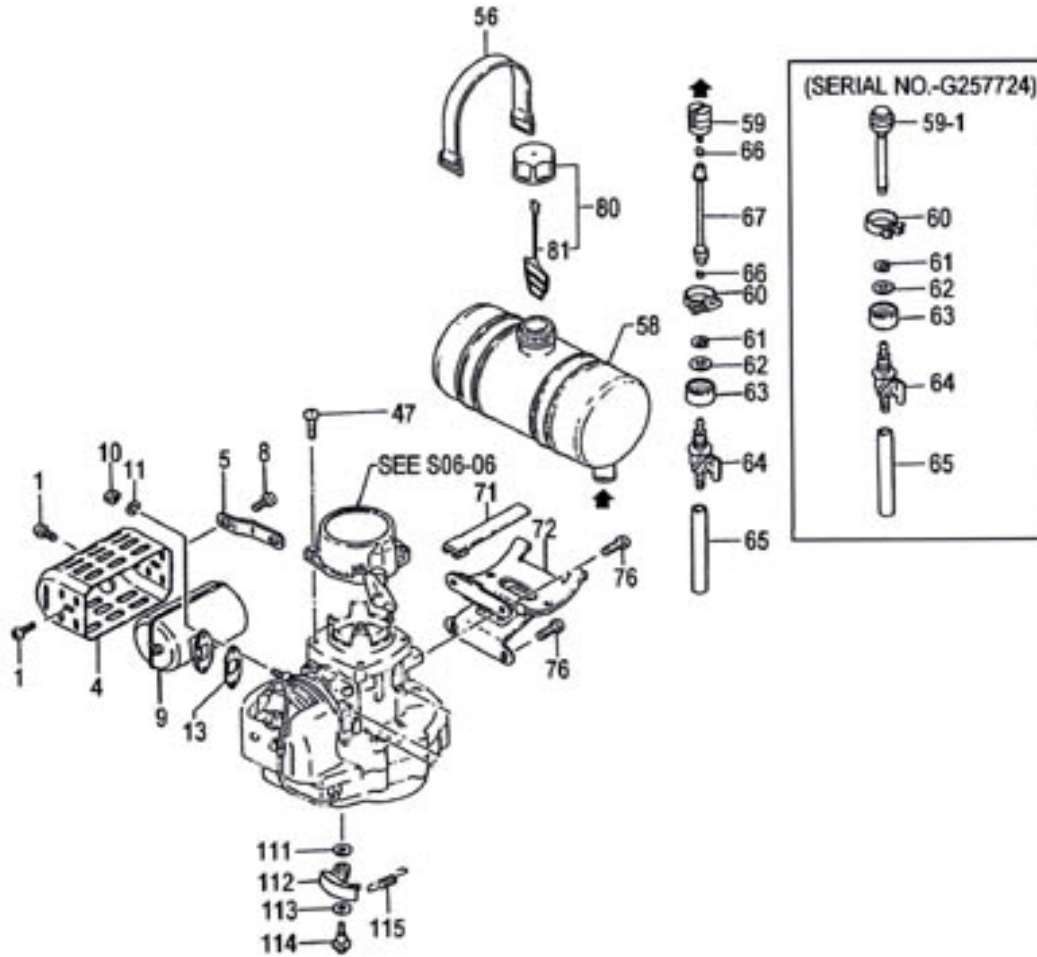


Parts List

Ref.	Part No.	Description	Q'ty	Serial No.
028	071-02007-21	CRANK SHAFT SHIM 0.10	V	
028	071-02007-22	CRANK SHAFT SHIM 0.15	V	
028	071-02007-23	CRANK SHAFT SHIM 0.20	V	
028	071-02007-24	CRANK SHAFT SHIM 0.30	V	
036	991-11100-013	SMALL NUT 10	1	
037	801-10205-20	PULLEY WASHER	2 - M105300	
037	801-10205-20	PULLEY WASHER	1	M105301 -
038	798-10205-20	STARTER PULLEY	1	
039	810-10200-20	RECOIL STARTER GASKET	1 - F180279	
046,1	072-10243-90	CRANK CASE ASS'Y	1 - F180279	
046	072-10243-91	CRANK CASE ASS'Y	1	F180280 -
047	100-02000-20	STUD BOLT 6X24	4 - F180279	
048	090-10200-20	CRANK CASE GASKET	1 - N155100	
048	090-10200-21	CRANK CASE GASKET	1	N155101 -
049	999-66153-000	OIL SEAL 15307	1	
050	999-61620-200	BALL BEARING #6202, 35MM/OD	1	
051	999-61620-300	BALL BEARING #6203, 40MM/OD	1	
052	999-66173-000	OIL SEAL 17307	1	
053	994-14060-301	SCREW 6X30/S	4	
061	727-01040-20	DRAIN GASKET	1	
062	990-11060-102	SCREW 6X10	1	
066	369-10250-20	GOVERNOR SHAFT	1	
067,1	367-10250-20	GOVERNOR SHAFT ARM	1 - L031550	
067	367-10250-21	GOVERNOR SHAFT ARM	1	L031551 -
068	990-11030-061	SCREW 3X6	2	
069	329-10250-20	OIL PARTITION	1	
070	990-11040-081	SCREW 4X8	2	
071	114-10250-91	GOVERNOR ASS'Y	1	
072,1	388-10250-20	GOVERNOR PLATE	1 - L031550	
072	388-10250-21	GOVERNOR PLATE	1	L031551 -
073,1	389-10250-20	GOVERNOR SLEEVE	1 - L031550	
073	389-10250-21	GOVERNOR SLEEVE	1	L031551 -
074	993-50015-002	STOP RING C-15, OUTER	1	

S06
05

TEA-500 ENGINE-2

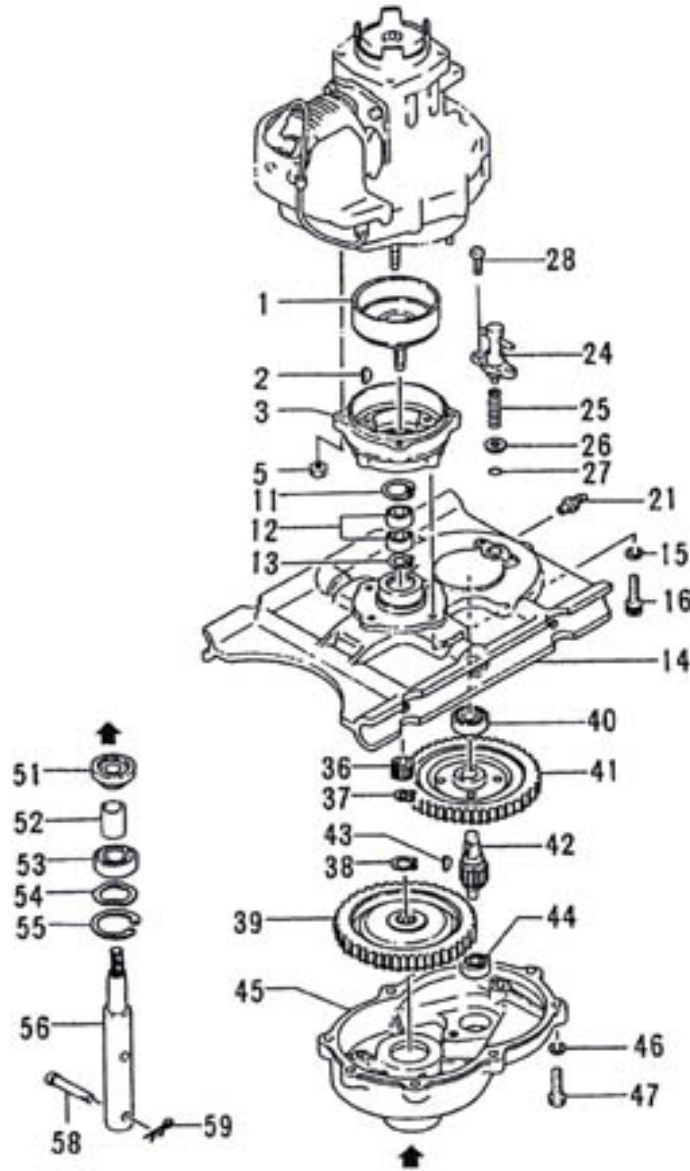


Parts List

Ref.	Part No.	Description	Q'ty	Serial No.
001	994-15060-081	SCREW 6X8PS	2	
004	738-10244-20	MUFFLER PROTECTOR	1	
005	733-10244-20	MUFFLER STAY	1	
008	994-15060-121	SCREW 6X12/PS	1	
009	706-10244-80	MUFFLER COMP.	1	
010	991-01060-011	NUT 6	2	
011	992-10060-012	S.WASHER 6	2	
013	737-10100-20	MUFFLER GASKET 1.5T	1	
047	994-15050-221	SCREW 5X22WS	4 - F180279	
047	994-15050-181	SCREW 5X18/PS	4 F180280 -	
056	603-02101-80	FUEL TANK BAND COMP.	2	
058	591-10244-20	TANK	1	
059,1	598-06020-90	PUMP FILTER ASS'Y	1 - G257724	
059	675-04042-80	PUMP FILTER BODY COMP.	1 G257725 -	
060	680-0632S-90	HOSE CLIP ASS'Y	1	
061	993-55060-000	STOP RING E-6	1	
062	992-00080-011	SMALL WASHER 8	1	
063	558-06020-20	PET-COCK HOLDING RUBBER	1	
064	592-06020-90	PET-COCK ASS'Y	1	
065	700-03005-23	FUEL PIPE 3X5X230	1	
066	680-04019-21	CLIP 7	2 G257725 -	
067	678-06020-20	RUBBER PIPE	1 G257725 -	
071	655-10244-20	CUSHION RUBBER	2	
072	607-10244-80	TANK HOLDING METAL COMP.	1	
076	994-15060-121	SCREW 6X12/PS	4	
080	595-01380-90	TANK CAP D ASS'Y, ORANGE	1	
081	626-32550-20	TANK CAP CHAIN	1	
111	359-10112-20	CLUTCH WASHER B	3	
112	290-10112-80	CLUTCH ARM COMP.	3	
113	358-10112-20	CLUTCH WASHER A	3	
114	357-10112-20	CLUTCH STEP BOLT	3	
115	342-10205-22	CLUTCH SPRING	3	

S06
08-1

TEA-500 GEAR CASE



Parts List

Ref.	Part No.	Description	Q'ty	Serial No.
001	030-32203-80	CLUTCH SHAFT COMP.	1	
002	068-10100-20	WOOD-RUFF KEY 3X13X4.5	1	
003	008-32250-20	GEAR CASE C	1	
005	994-40060-011	SPRING NUT 6	4	
011	993-51032-002	STOP RING C-32, INNER	1	
012	999-61600-202	BALL BEARING #6002Z, 32MM/OD	2	
013	993-50015-002	STOP RING C-15, OUTER	1	
014	002-32250-80	GEAR CASE A COMP.	1	
015	992-10060-012	S.WASHER 6	4	
016	990-51060-183	HEX. HOLE BOLT 6X18	4	
021	300-32250-80	GREASE NIPPLE COMP.	1	
024	404-32250-80	LOCK COMP.	1	
025	403-32250-20	LOCK PIN SPRING	1	
026	760-32250-20	WASHER	1	
027	999-67007-000	O-RING P-7	1	
028	994-16050-161	SCREW 5X16/WS	2	
036	010-32201-20	GEAR 1	1	
037	993-50010-002	STOP RING C-10, OUTER	1	
038	993-50022-002	STOP RING C-22, OUTER	1	
039	018-32250-20	GEAR 4	1	
040	999-61620-200	BALL BEARING #6202, 35MM/OD	1	
041	012-32250-20	GEAR 2	1	
042	016-32201-20	GEAR 3	1	
043	068-12101-20	WOOD-RUFF KEY 4X16X5	1	
044	999-61620-000	BALL BEARING #6200, 30MM/OD	1	
045	006-32250-20	GEAR CASE B	1	
046	992-10060-012	S.WASHER 6	6	
047	990-23060-221	PLUS BOLT 6X22	6	
051	999-61302-050	ROLLER BRG #30205J 6.5X10.5	1	
052	040-32250-20	BEARING STOPPER	1	
053	999-61620-502	BALL BEARING #6205Z, 52MM/OD	1	
054	992-09520-030	WAVE WASHER B.B.	1	
055	993-51052-002	STOP RING C-52, INNER	1	
056	022-32250-20	DRIVE SHAFT	1	
		SEE NEXT PAGE		

