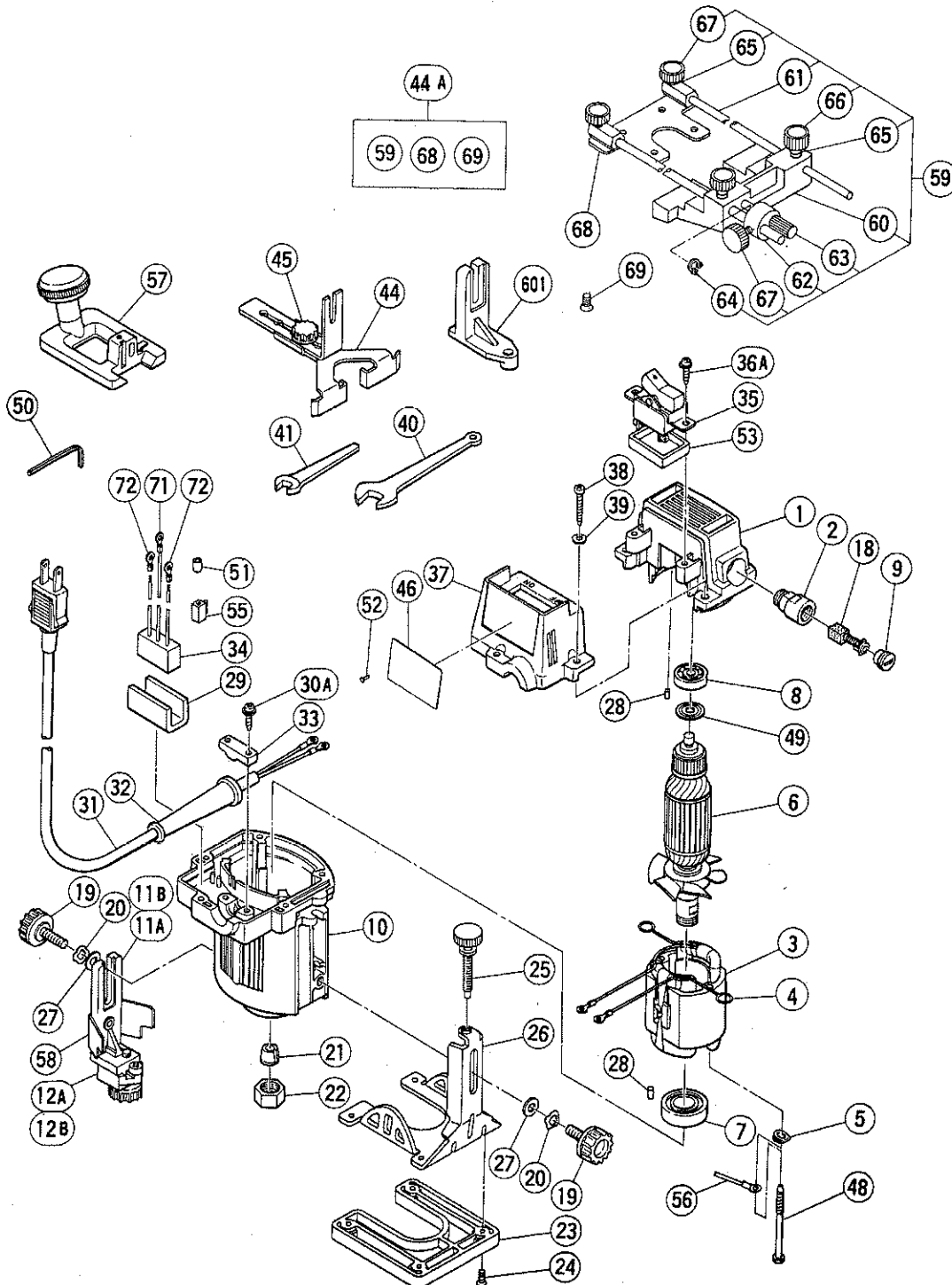


ELECTRIC TOOL PARTS LIST

■ TRIMMER
Model TR - 6

1993 · 9 · 3
(E7)



PARTS

TR-6

ITEM NO.	CODE NO.	DESCRIPTION	NO. USED	REMARKS
1	960-080	REAR COVER ASS'Y	1	INCLUD.2
2	937-846	BRUSH HOLDER	2	
* 3	960-083C	STATOR ASS'Y 110V - 115V	1	INCLUD.4
* 3	960-083D	STATOR ASS'Y 120V - 127V	1	INCLUD.4
* 3	960-083E	STATOR ASS'Y 220V - 230V	1	INCLUD.4
* 3	960-083F	STATOR ASS'Y 240V	1	INCLUD.4
* 3	960-084L	STATOR ASS'Y 220V	1	INCLUD.4 FOR EUROPE
* 3	960-083G	STATOR ASS'Y 230V	1	INCLUD.4 FOR NZL
* 3	960-084M	STATOR ASS'Y 230V	1	INCLUD.4 FOR SAF
* 3	960-083H	STATOR ASS'Y 240V	1	INCLUD.4 FOR AUS
* 3	960-083J	STATOR ASS'Y 110V	1	INCLUD.4 FOR GBR
4	930-630	BRUSH TERMINAL	2	
* 5	957-592	EARTH WASHER D4	1	TILL 1.1987
* 6	960-085U	ARMATURE ASS'Y 110V - 115V	1	INCLUD.7,8,49
* 6	960-085D	ARMATURE 120V - 127V	1	
* 6	960-085F	ARMATURE 220V - 240V	1	
7	600-2VV	BALL BEARING 6002VVCMP2S	1	
8	627-VVM	BALL BEARING 627VVMC2EPS2S	1	
9	937-847	BRUSH CAP	2	
10	960-087	HOUSING	1	
* 11A	960-088	TRIMMER GUIDE ASS'Y	1	INCLUD.12A,58
* 11B	960-125Z	TRIMMER GUIDE ASS'Y	1	INCLUD.12B,58 FOR FRA,SUI
* 12A	960-116	GUIDE PIN	1	
* 12B	960-126Z	GUIDE PLATE (B)	1	FOR FRA,SUI
18	999-021	CARBON BRUSH (1 PAIR)	2	
19	960-058	KNOB BOLT M6X17	2	
20	960-092	WAVE WASHER	2	
* 21	960-095	COLLET CONE 6MM	1	
* 21	960-114Z	COLLET CONE 6.35MM	1	
22	960-096	COLLET NUT	1	
23	960-097	SUB BASE	1	
24	949-321	FLAT HD. SCREW M4X8 (10 PCS.)	4	
25	960-098	SCREW (A)	1	
26	960-099	BASE	1	
27	949-425	WASHER M6 (10 PCS.)	1	
28	931-701	BEARING LOCK	2	
* 29	930-153	SUPPORT (B)	1	FOR NOISE SUPPRESSOR
30A	984-750	TAPPING SCREW (W/FLANGE) D4X16	2	
* 31	500-212Z	CORD	1	(CORD ARMOR D8.8) FOR ASIA
* 31	500-223Z	CORD	1	(CORD ARMOR D10.1) FOR SIN
* 31	500-226Z	CORD	1	(CORD ARMOR D8.8) FOR OCEANIA
* 31	500-231Z	CORD	1	(CORD ARMOR D8.8) FOR SAF
* 31	500-234Z	CORD	1	(CORD ARMOR D8.8) FOR EUROPE (W/O TERMINAL)
* 31	500-241Z	CORD	1	(CORD ARMOR D8.8) FOR USA
* 31	960-112Z	CORD	1	(CORD ARMOR D8.8) FOR HOL
* 31	960-113Z	CORD	1	(CORD ARMOR D8.8) FOR SUI
* 31	971-676Z	CORD	1	(CORD ARMOR D8.8) FOR EUROPE (W/TUBE(D))
* 32	953-327	CORD ARMOR D8.8	1	
* 32	938-051	CORD ARMOR D10.1	1	

*: ALTERNATIVE PARTS

PARTS

TR-6

ITEM NO.	CODE NO.	DESCRIPTION	NO. USED	REMARKS
33	960-266	CORD CLIP	1	
* 34	994-273	NOISE SUPPRESSOR	1	
* 35	956-789	SWITCH (2P SCREW TYPE)	1	
* 35	960-118Z	SWITCH (2P PILLAR TYPE)	1	FOR EUROPE
36A	982-034	TAPPING SCREW (W/WASHER) D4X12	2	
* 37	960-100	SWITCH COVER	1	
* 37	960-115P	SWITCH COVER	1	FOR USA
38	958-705	TAPPING SCREW D4X25	5	
39	949-423	WASHER M4 (10 PCS.)	5	
40	938-660	WRENCH 17MM	1	
41	960-101	WRENCH 10MM	1	
* 44	960-104	STRAIGHT GUIDE ASS'Y	1	INCLUD.45
* 44A	960-133	STRAIGHT GUIDE (B) ASS'Y	1	INCLUD.59,68,69 FOR FRA,SUI
45	960-058	KNOB BOLT M6X17	1	
46		NAME PLATE	1	
48	960-108	HEX. HD. TAPPING SCREW D4X60	2	
49	960-111	TAIL WASHER	1	
50	944-458	HEX. BAR WRENCH 4MM	1	
* 51	981-373	TUBE (D)	2	
* 52	949-509	RIVET D2.5X3.2 (10 PCS.)	2	TILL 12.1986
53	960-119Z	RUBBER PACKING	1	
* 55	938-307Z	PILLAR TERMINAL	1	
* 56		INTERNAL WIRE	1	
* 57	960-110	TRIMMER SHOE	1	
* 57	960-127Z	TRIMMER SHOE (B)	1	FOR FRA,SUI
58	960-129	EYE SHIELD	1	
* 59	960-130	GUIDE (B) ASS'Y	1	INCLUD.60 - 67 FOR FRA,SUI
* 60	960-134	STRAIGHT GUIDE (B)	1	FOR FRA,SUI
* 61	960-136	GUIDE BAR	2	FOR FRA,SUI
* 62	960-135	SCREW HOLDER	1	FOR FRA,SUI
* 63	956-918	FEED SCREW (A)	1	FOR FRA,SUI
* 64	673-488	RETAINING RING (E - TYPE) FOR D5 SHAFT	1	FOR FRA,SUI
* 65	935-295	SPRING	4	FOR FRA,SUI
* 66	940-650	STOPPER SCREW M5X14	2	FOR FRA,SUI
* 67	960-132	STOPPER SCREW M5X8	3	FOR FRA,SUI
* 68	960-131	GUIDE (A)	1	FOR FRA,SUI
* 69	949-322	FLAT HD. SCREW M4X10 (10 PCS.)	4	FOR FRA,SUI
* 71	959-144	TERMINAL 50051 (10 PCS.)	1	FOR NOISE SUPPRESSOR
* 72	980-063	TERMINAL	2	FOR NOISE SUPPRESSOR,FOR NZL

*: ALTERNATIVE PARTS

