

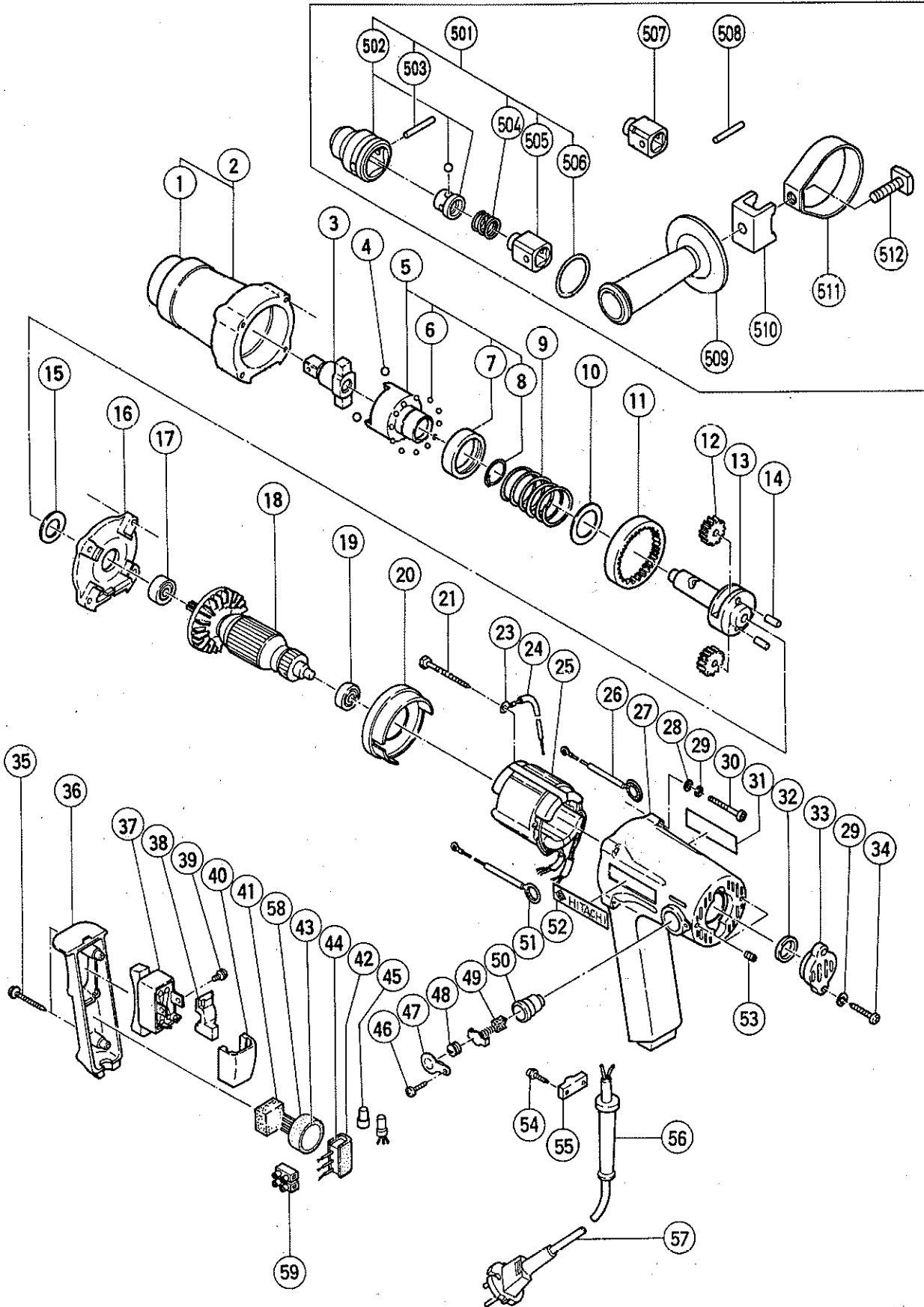
ELECTRIC TOOL PARTS LIST

TAPPER

1986-3-31

Model UT14Y

UT14Y(E1)



PARTS

UT14Y(E1)

Item No.	Code No.	Part Name	Q'ty	Remarks
1	986044	Bumper	1	
2	986043	Hammer Case Ass'y	1	includ. 1
3	986052	Anvil (A)	1	
4	959150	Steel Ball D6.35	2	(10 pcs.)
5	986045	Hammer Ass'y	1	includ. 6~8
6	959148	Steel Ball D3.17	30	(10 pcs.)
7	986046	Spring Seat	1	
8	986047	Retaining Ring	1	
9	986042	Spring	1	
10	986041	Washer	1	
11	985980	Ring Gear	1	
12	985976	Idle Gear	2	
13	986040	Spindle	1	
14	985169	Needle Roller	2	
15	985979	Washer (B)	1	
16	985974	Inner Cover	1	
17	939352	Ball Bearing (608DDC2)	1	
18	—	Armature	1	See alternative parts
19	939385	Ball Bearing (608VVC2)	1	
20	985973	Fan Guide	1	
21	961672	Hexagon Hd. Tapping Screw D4 x 50	2	
23	—	Terminal	1	See alternative parts
24	—	Tube	1	See alternative parts
25	—	Stator	1	See alternative parts
26	—	Internal Wire	1	See alternative parts
27	985970	Housing Ass'y	1	includ. 50, 53
28	949429	Bolt Washer	4	for M4 (10 pcs.)
29	949453	Spring Lock Washer	6	for M4 (10 pcs.)
30	985992	Hexagon Socket Hd. Bolt M4 x 45	4	(Seal Lock Bolt)
31	—	Name Plate	1	
32	985198	Rubber Washer	1	
33	985162	Tail Cover	1	
34	956384	Tapping Screw D4 x 20	2	
35	985984	Tapping Screw D4 x 35	2	W/Washer
36	985983	Handle Cover	1	
37	985103	Switch	1	
38	985176	Switch Adapter	1	
39	980060	Machine Screw M3.5 x 5	4	W/Washer
40	985177	Switch Holder	1	
41	—	Support	1	See alternative parts
42	—	Support (B)	1	See alternative parts
43	—	Choke Coil	1	See alternative parts
44	—	Noise Suppressor	1	See alternative parts
45	—	Connector	1	See alternative parts
46	958715	Tapping Screw D4 x 10	2	
47	985179	Cap Cover	2	
48	931266	Brush Cap	2	
49	999021	Carbon Brush	2	(2 pcs.)
50	957571	Brush Holder	2	
51	—	Internal Wire	1	See alternative parts
52	957561	HITACHI Label	1	
53	938477	Hexagon Socket Hd. Set Screw M5 x 8	2	
54	930446	Tapping Screw D4 x 16	2	W/Washer

PARTS

UT14Y(E1)

Item No.	Code No.	Part Name	Q'ty	Remarks
55	937631	Cord Clip	1	
56	—	Cord Armor	1	See alternative parts
57	—	Cord	1	See alternative parts
58	—	Support (B)	1	See alternative parts
59	—	Pillar Terminal	1	See alternative parts

ALTERNATIVE PARTS

Item No.	Code No.	Part Name	Q'ty	Remarks
18	986051C	Armature 110V ~ 115V	1	
	986055E	Armature 220V ~ 230V	1	
	986055F	Armature 240V	1	
23	980063	Terminal	1	for F.R. Germany, Holland
24	985194	Tube D2.5	1	for F.R. Germany, Holland
25	986049C	Stator 110V ~ 115V	1	
	986049E	Stator 220V ~ 230V	1	
	340109E	Stator 220V	1	for F.R. Germany
	986049F	Stator 240V	1	for Australia
26	985186	Internal Wire	1	
	985192	Internal Wire	1	for U.S.A.
41	985175	Support	1	for F.R. Germany, Holland
42	930153	Support (B)	1	for Noise Suppressor
43	955908	Choke Coil	1	for F.R. Germany
44	986005	Noise Suppressor	1	for F.R. Germany, Holland
45	959140	Connector (50091)	2	for F.R. Germany (10 pcs.)
51	985187	Internal Wire	1	
	985193	Internal Wire	1	for U.S.A.
56	953327	Cord Armor D8.8	1	
	938051	Cord Armor D10.1	1	
57	500201Z	Cord 110V ~ 220V	1	(Cord Armor D10.1)
	500415Z	Cord 115V	1	for U.S.A. (Cord Armor D8.8)
	500247Z	Cord 220V	1	for F.R. Germany, Holland (Cord Armor D10.1)
	500223Z	Cord 230V	1	for Singapore (Cord Armor D10.1)
	500405Z	Cord 240V	1	for Australia (Cord Armor D8.8)
58	953330	Support (B)	1	for Choke Coil
59	983418Z	Pillar Terminal (B)	1	
	958308Z	Pillar Terminal (A)	1	for Holland

STANDARD ACCESSORIES

UT14Y(E1)

Item No.	Code No.	Part Name	Q'ty	Remarks
501	995281	Tap Holder Ass'y 1/2"	1	includ. 502~506
502	995305	Collet Holder (B) 1/2", M12	1	
503	995296	Pin	1	
504	995294	Spring (A)	1	
505	995288	Tap Drive (B) 1/2"	1	
506	986374	O-Ring (P32)	1	
507	995289	Tap Drive (B) M12	1	
508	995296	Pin	1	
509	980901	Side Handle	1	
510	955089	Handle Base	1	
511	995299	Ring	1	
512	980903	Square Head Bolt M8	1	

OPTIONAL ACCESSORIES

Item No.	Code No.	Part Name	Q'ty	Remarks
601	995280	Tap Holder Ass'y M10	1	includ. 602~606
602	995287	Tap Drive (A) M10	1	
603	995304	Collet Holder (A) M10	1	
604	995294	Spring (A)	1	
605	995296	Pin	1	
606	986374	O-Ring (P32)	1	
607	995282	Tap Holder Ass'y 5/8"	1	includ. 608~612
608	995290	Tap Drive (C) 5/8"	1	
609	995306	Collet Holder (C) 5/8"	1	
610	995295	Spring (B)	1	
611	995297	Pin	1	
612	995298	O-Ring (P38)	1	
613	995283	Tap Holder Ass'y M12	1	includ. 604~606, 614, 615
614	995289	Tap Drive (B) M12	1	
615	995305	Collet Holder (B) 1/2", M12	1	
616	995300	Tap Holder Ass'y M14	1	includ. 610~612, 617, 618
617	995302	Tap Drive (D) M14	1	
618	995307	Collet Holder (D) M14	1	
619	995308	Tap Holder Ass'y M8	1	includ. 604~606, 620, 621
620	996340	Tap Drive (E) M8	1	
621	995309	Collet Holder (E) M8	1	
622	996341	Tap Holder Ass'y M16	1	includ. 610~612, 623, 624
623	996343	Tap Drive (F) M16	1	
624	996342	Collet Holder (F) M16	1	
625	943277	Hexagon Bar Wrench 3mm	1	for M4 Screw
626	971042	Grease for Impact Wrench	1	