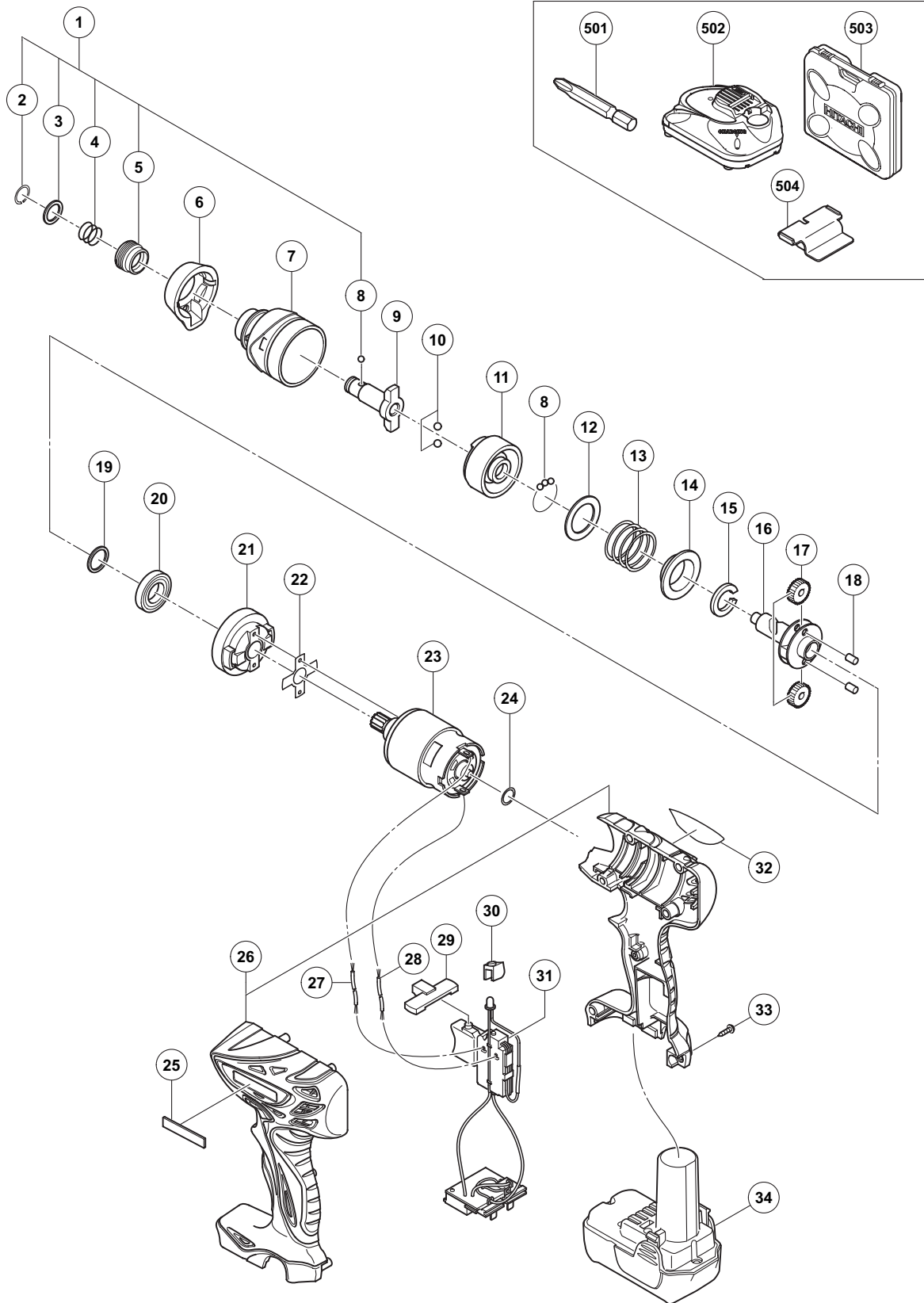


ELECTRIC TOOL PARTS LIST

CORDLESS IMPACT DRIVER
Model WH 10DFL

2009·6·1
(E1)



PARTS

WH 10DFL

ITEM NO.	CODE NO.	DESCRIPTION	NO. USED	REMARKS
1	329-538	GUIDE SLEEVE ASS'Y	1	INCLUD. 2-5, 8
2	995-933	RETAINING RING	1	
3	322-739	WASHER (F)	1	
4	322-737	GUIDE SPRING (C)	1	
5	329-537	GUIDE SLEEVE (C)	1	
6	330-966	FRONT CAP	1	
7	330-955	HAMMER CASE	1	
8	959-148	STEEL BALL D3.175 (10 PCS.)	29	
9	329-555	ANVIL (S)	1	
10	959-154	STEEL BALL D5.556 (10 PCS.)	2	
11	330-965	HAMMER	1	
12	315-978	WASHER (J)	1	
13	322-741	HAMMER SPRING (E)	1	
14	316-172	WASHER (S)	1	
15	322-740	STOPPER (A)	1	
16	330-960	SPINDLE	1	
17	330-958	IDLE GEAR	2	
18	980-258	NEEDLE (C)	2	
19	330-961	WASHER (G)	1	
20	330-962	BALL BEARING 6803VV	1	
21	331-019	RING GEAR	1	
22	331-448	PACKING (A)	1	
23	330-956	MOTOR DC 12 V	1	
24	987-105	O-RING (S-10)	1	
25	330-719	HITACHI LABEL	1	
26	330-953	HOUSING (A). (B)SET (GREEN)	1	
27	331-449	INTERNAL WIRE (C)	1	
28	306-041	INTERNAL WIRE (B) (BLACK)	1	
29	329-548	PUSHING BUTTON (A)	1	
30	329-552	LED HOLDER	1	
31	330-963	SWITCH	1	
32		NAME PLATE	1	
33	313-687	TAPPING SCREW (W/FLANGE) D3 X 16 (BLACK)	8	
* 34	329-371	BATTERY BCL 1015 (EUROPE, AUS, NZL)	2	INCLUD. 504
* 34	331-065	BATTERY BCL 1015 (USA, CAN)	2	INCLUD. 504

STANDARD ACCESSORIES

ITEM NO.	CODE NO.	DESCRIPTION	NO. USED
501	992-671	+ DRIVER BIT (B) NO.2 50L	1
502		CHARGER (MODEL UC 10SFL)	1
503	331-450	CASE	1
504	331-086	BATTERY COVER	1