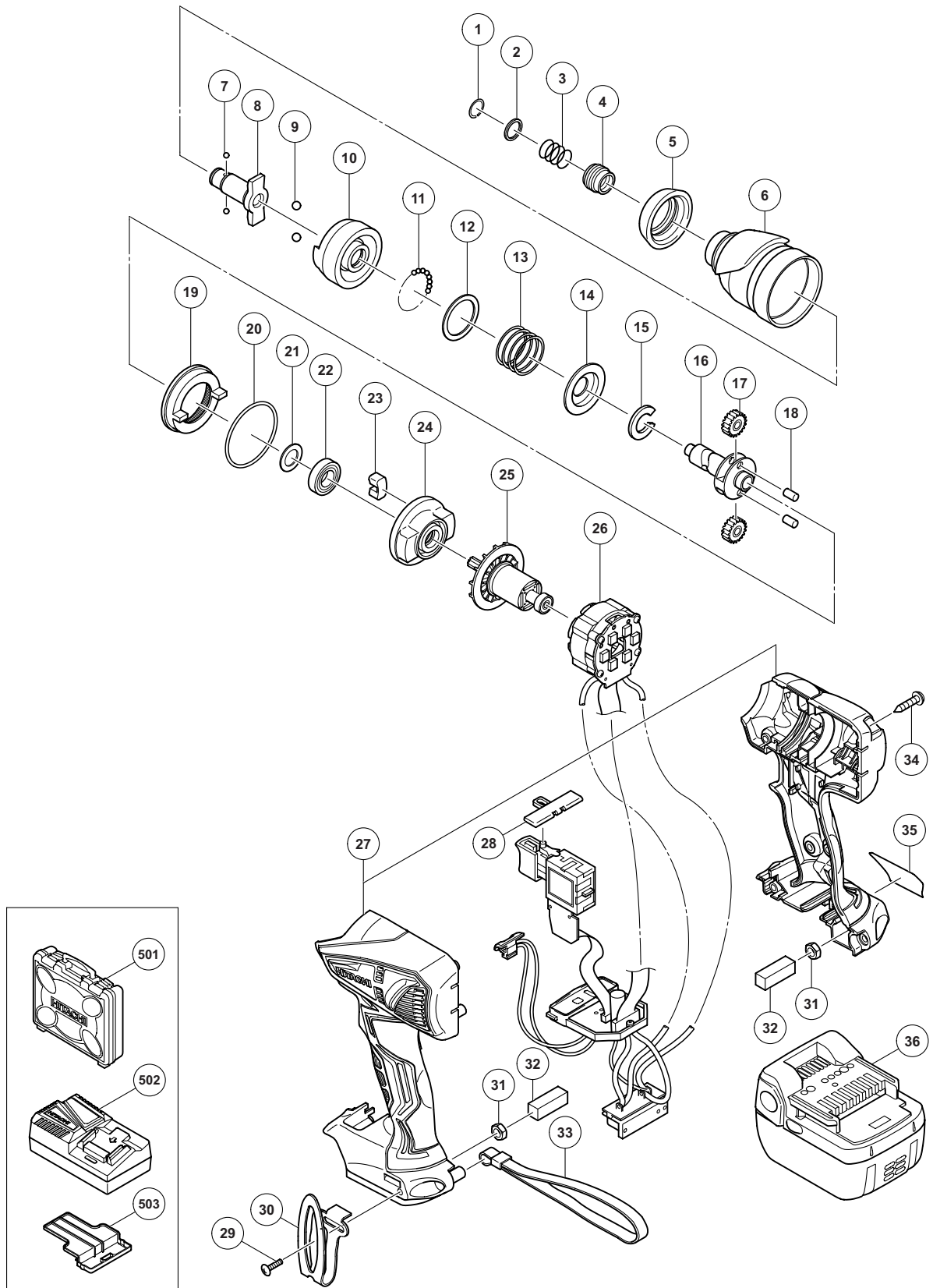


ELECTRIC TOOL PARTS LIST

■ CORDLESS IMPACT DRIVER Model WH 14DBEL

2013-6-19
(E1)



PARTS

WH 14DBEL

ITEM NO.	CODE NO.	DESCRIPTION	NO. USED	REMARKS
1	330-619	RETAINING RING	1	
2	330-856	WASHER (D)	1	
3	331-284	GUIDE SPRING (D)	1	
4	322-717	GUIDE SLEEVE (D)	1	
5	335-907	FRONT CAP	1	
6	335-908	HAMMER CASE	1	
7	319-535	STEEL BALL D3.5 (10 PCS.)	2	
*	8	335-910	ANVIL (F)	1
*	8	335-909	ANVIL (E)	1 FOR SIN, IND, THA, CHN, HKG, TPE, KOR
9	959-154	STEEL BALL D5.556 (10 PCS.)	2	
10	335-911	HAMMER (C)	1	
11	959-148	STEEL BALL D3.175 (10 PCS.)	28	
12	315-978	WASHER (J)	1	
13	331-285	HAMMER SPRING (D)	1	
14	316-172	WASHER (S)	1	
15	316-171	STOPPER	1	
16	335-912	SPINDLE (E)	1	
17	326-295	IDLE GEAR SET (2 PCS.)	2	
18	319-914	NEEDLE ROLLER	2	
19	330-657	RING GEAR	1	
20	983-852	O-RING (S-42)	1	
21	319-911	WASHER (E)	1	
22	690-1VV	BALL BEARING 6901VVCMP2L	1	
23	324-230	DAMPER (A)	2	
24	336-240	INNER COVER	1	
25	335-913	ROTOR PINION	1	
26	335-917	WIRING	1	
27	335-928	HOUSING (A).(B) SET (GREEN)	1	
28	324-225	PUSHING BUTTON (B)	1	
29	327-001	TRUSS HD. SCREW M4 (BLACK)	1	
30	330-666	HOOK	1	
31	327-002	LOCK NUT M4 (BLACK)	2	
32	328-644	PACKING	2	
33	306-952	STRAP (BLACK)	1	
34	301-653	TAPPING SCREW (W/FLANGE) D4 X 20 (BLACK)	9	
35		NAME PLATE	1	
*	36	334-419	BATTERY BSL 1440 (EUROPE, AUS, NZL)	2 INCLUD. 503
*	36	329-083	BATTERY BSL 1430 (EUROPE, AUS, NZL)	2 INCLUD. 503
*	36	330-756	BATTERY BSL 1430 (CHN)	2 INCLUD. 503
*	36	334-727	BATTERY BSL 1430 (TPE)	2 INCLUD. 503
*	36	334-904	BATTERY BSL 1430 (KOR)	2 INCLUD. 503

STANDARD ACCESSORIES

WH 14DBEL

ITEM NO.	CODE NO.	DESCRIPTION	NO. USED	REMARKS
501	330-592	CASE	1	
502		CHARGER (MODEL UC 18YFSL)	1	
503	329-897	BATTERY COVER	1	

OPTIONAL ACCESSORIES

ITEM NO.	CODE NO.	DESCRIPTION	NO. USED	REMARKS
601	321-823	DRILL CHUCK AND ADAPTER SET	1	INCLUD. 616, 618
602	309-922	GREASE FOR IMPACT DRIVER (500 G)	1	
603	992-671	+ DRIVER BIT (B) NO. 2 50L	1	
604	992-672	+ DRIVER BIT (B) NO. 3 50L	1	
605	996-177	NON-MAGNETIC HEX. SOCKET 8 MM 65L	1	
606	985-329	NON-MAGNETIC HEX. SOCKET 10 MM 65L	1	
607	996-178	NON-MAGNETIC HEX. SOCKET 12 MM 65L	1	
608	996-179	NON-MAGNETIC HEX. SOCKET 13 MM 65L	1	
609	996-180	NON-MAGNETIC HEX. SOCKET 14 MM 65L	1	
610	996-185	NON-MAGNETIC HEX. SOCKET 15 MM 65L	1	
611	996-181	NON-MAGNETIC HEX. SOCKET 16 MM 65L	1	
612	996-182	NON-MAGNETIC HEX. SOCKET 17 MM 65L	1	
613	996-186	NON-MAGNETIC HEX. SOCKET 19 MM 65L	1	
614	996-197	HEX. SOCKET (LONG) 21 MM X 166L	1	
615	996-184	BIT PIECE	1	
616	987-575	CHUCK WRENCH FOR 10VLB-D, 10VLR-D	1	
617	930-119	CHUCK WRENCH 6.5G	1	
618	307-543	CHUCK ADAPTER	1	
619	306-927	SILICONE RUBBER	1	

