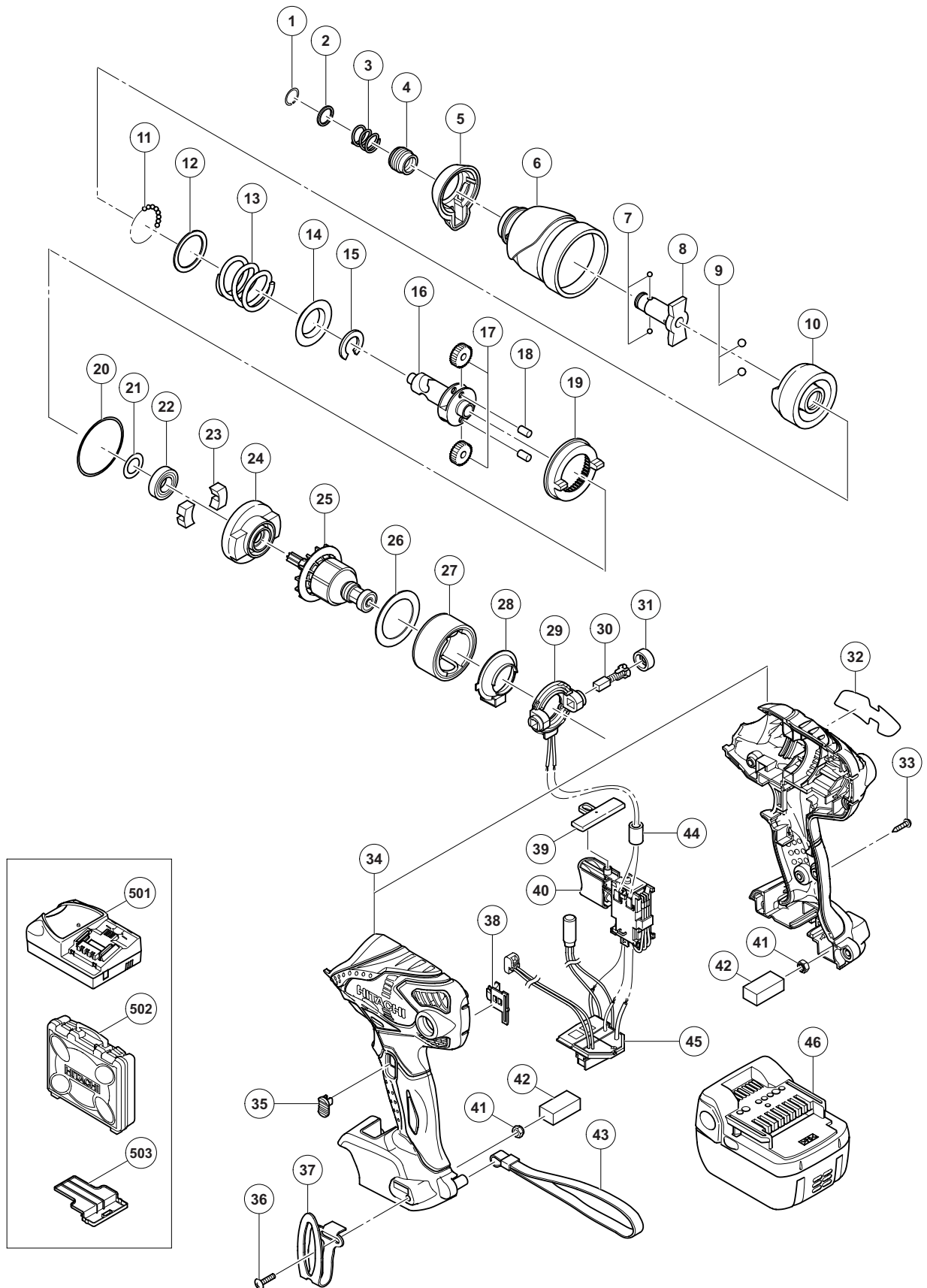


## ELECTRIC TOOL PARTS LIST

### ■ CORDLESS IMPACT DRIVER Model WH 14DSDL

2012-9-10  
(E1)



**PARTS**

WH 14DSDL

ITEM NO.	CODE NO.	DESCRIPTION	NO USED	REMARKS
1	330-619	RETAINING RING	1	
2	330-856	WASHER (D)	1	
3	331-284	GUIDE SPRING (D)	1	
4	322-717	GUIDE SLEEVE (D)	1	
5	332-198	FRONT CAP	1	
6	333-745	HAMMER CASE	1	
7	319-535	STEEL BALL D3.5 (10 PCS.)	2	
* 8	333-744	ANVIL (D)	1	
* 8	333-743	ANVIL (C)	1	FOR CHN, HKG, TPE, IND, UAE, SIN, VIE, THA, PHI
9	959-154	STEEL BALL D5.556 (10 PCS.)	2	
10	324-218	HAMMER	1	
11	959-148	STEEL BALL D3.175 (10 PCS.)	28	
12	315-978	WASHER (J)	1	
13	324-224	HAMMER SPRING (F)	1	
14	316-172	WASHER (S)	1	
15	324-222	STOPPER (B)	1	
16	332-186	SPINDLE	1	
17	326-295	IDLE GEAR SET (2 PCS.)	2	
18	319-914	NEEDLE ROLLER	2	
19	333-747	RING GEAR (E)	1	
20	983-852	O-RING (S-42)	1	
21	319-911	WASHER (E)	1	
22	690-1VV	BALL BEARING 6901VVCMP2L	1	
23	324-230	DAMPER (A)	2	
24	332-185	INNER COVER	1	
25	360-928	ARMATURE AND PINION SET	1	
26	324-607	SIDE YOKE (A)	1	
27	334-901	MAGNET (J) ASS'Y	1	INCLUD. 26
28	324-228	DUST GUARD FIN (B)	1	
29	334-955	BRUSH BLOCK	1	
30	999-054	CARBON BRUSH 5 X 6 X 11.5 (1 PAIR)	2	
31	319-918	BRUSH CAP	2	
32		NAME PLATE	1	
33	301-653	TAPPING SCREW (W/FLANGE) D4 X 20 (BLACK)	9	
34	334-954	HOUSING (A).(B) SET	1	
35	329-519	LEVER (A)	1	
36	327-001	TRUSS HD. SCREW M4 (BLACK)	1	
37	332-824	HOOK	1	
38	329-520	LEVER (B)	1	
39	329-454	PUSHING BUTTON (A)	1	
40	334-956	DC-SPEED CONTROL SWITCH	1	
41	327-002	LOCK NUT M4 (BLACK)	2	
42	328-644	PACKING	2	
43	306-952	STRAP (BLACK)	1	
* 44	318-247	FERRITE CORE	1	FOR EUROPE, GBR, NOR, SWE, DEN, FIN, RUS, AUT, BRA, ISR
45	334-957	CONTROLLER TERMINAL SET	1	
* 46	329-083	BATTERY BSL 1430 (EUROPE, AUS, NZL)	2	
* 46	330-756	BATTERY BSL 1430 (CHN)	2	

# PARTS

WH 14DSDL

ITEM NO.	CODE NO.	DESCRIPTION	NO. USED	REMARKS		
*	46	334-727	BATTERY BSL 1430 (TPE)	2		
*	46	334-419	BATTERY BSL 1440 (EUROPE, AUS, NZL)	2		

**STANDARD ACCESSORIES**

WH 14DSDL

ITEM NO.	CODE NO.	DESCRIPTION	NO. USED	REMARKS	
501		CHARGER (MODEL UC 18YRSL)	1		
502	323-230	CASE	1		
503	329-897	BATTERY COVER	1		

**OPTIONAL ACCESSORIES**

ITEM NO.	CODE NO.	DESCRIPTION	NO. USED	REMARKS	
601	321-823	DRILL CHUCK AND ADAPTER SET	1	INCLUD. 616, 618	
602	309-922	GREASE FOR IMPACT DRIVER (500 G)	1		
603	992-671	+ DRIVER BIT (B) NO. 2 50L	1		
604	992-672	+ DRIVER BIT (B) NO. 3 50L	1		
605	996-177	NON-MAGNETIC HEX. SOCKET 8 MM 65L	1		
606	985-329	NON-MAGNETIC HEX. SOCKET 10 MM 65L	1		
607	996-178	NON-MAGNETIC HEX. SOCKET 12 MM 65L	1		
608	996-179	NON-MAGNETIC HEX. SOCKET 13 MM 65L	1		
609	996-180	NON-MAGNETIC HEX. SOCKET 14 MM 65L	1		
610	996-185	NON-MAGNETIC HEX. SOCKET 15 MM 65L	1		
611	996-181	NON-MAGNETIC HEX. SOCKET 16 MM 65L	1		
612	996-182	NON-MAGNETIC HEX. SOCKET 17 MM 65L	1		
613	996-186	NON-MAGNETIC HEX. SOCKET 19 MM 65L	1		
614	996-197	HEX. SOCKET (LONG) 21 MM X 166L	1		
615	996-184	BIT PIECE	1		
616	987-575	CHUCK WRENCH FOR 10VLB-D, 10VLR-D	1		
617	930-119	CHUCK WRENCH 6.5G	1		
618	307-543	CHUCK ADAPTER	1		