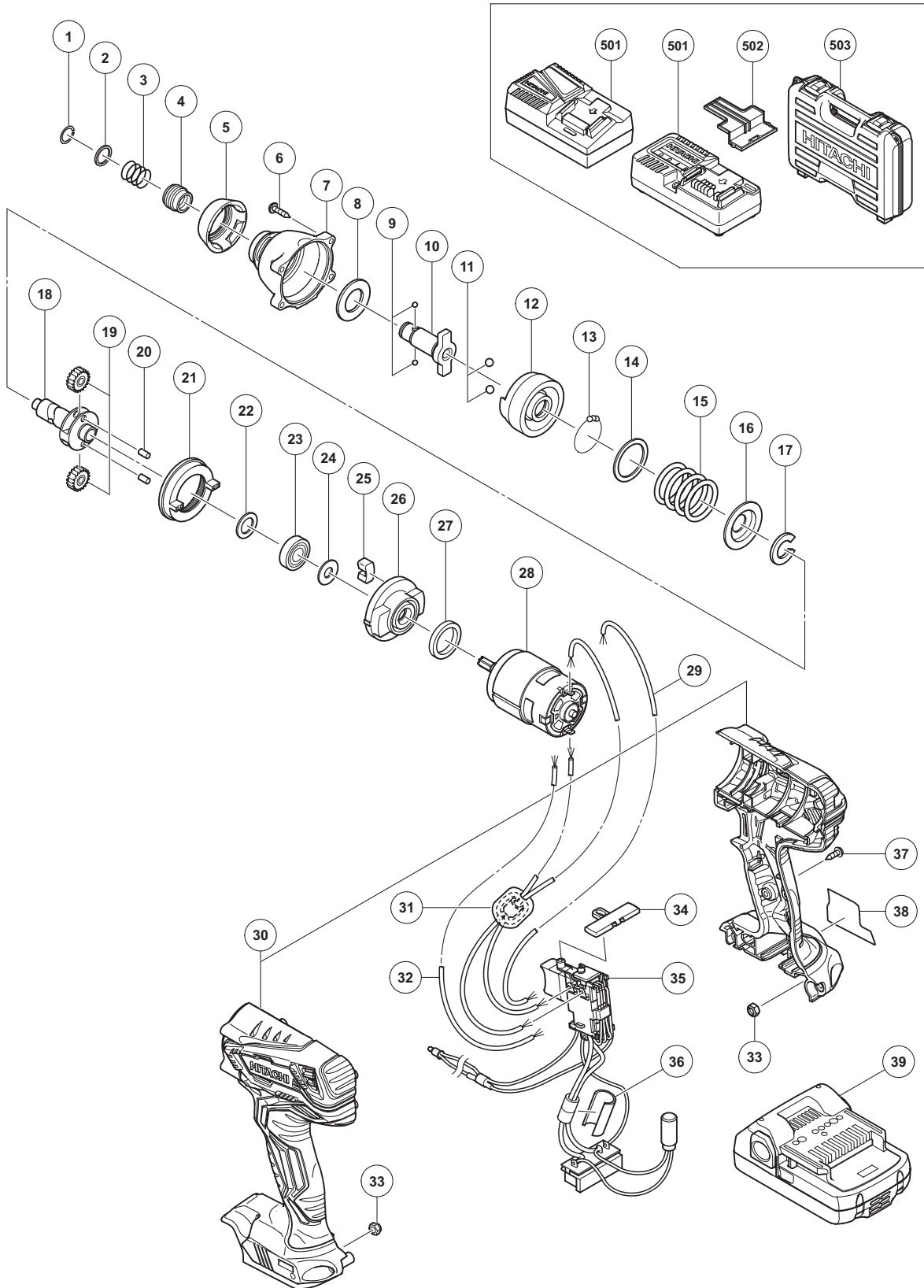


ELECTRIC TOOL PARTS LIST

CORDLESS IMPACT DRIVER Model WH 18DJL

2014·4·29
(E1)



PARTS

WH 18DJL

ITEM NO.	CODE NO.	DESCRIPTION	NO. USED	REMARKS
1	330619	RETAINING RING	1	
2	330856	WASHER (D)	1	
3	331284	GUIDE SPRING (D)	1	
4	322717	GUIDE SLEEVE (D)	1	
5	336636	FRONT CAP	1	
6	319917	TAPPING SCREW (W/SP. WASHER) D4 X 25 (BLACK)	4	
7	336637	HAMMER CASE	1	
8	336639	WASHER (F)	1	
9	319535	STEEL BALL D3.5 (10 PCS.)	2	
* 10	336634	ANVIL (C)	1	
* 10	336635	ANVIL (D)	1	FOR FRA,ITA,AUS,ISR
11	959154	STEEL BALL D5.556 (10 PCS.)	2	
12	336641	HAMMER (C)	1	
13	959148	STEEL BALL D3.175 (10 PCS.)	28	
14	315978	WASHER (J)	1	
15	336640	HAMMER SPRING (K)	1	
16	316172	WASHER (S)	1	
17	316171	STOPPER	1	
18	335912	SPINDLE (E)	1	
19	326295	IDLE GEAR SET (2 PCS.)	2	
20	319914	NEEDLE ROLLER	2	
21	330657	RING GEAR	1	
22	319911	WASHER (E)	1	
23	6901VV	BALL BEARING 6901VVCMP2L	1	
24	331288	FELT	1	
25	324230	DAMPER (A)	2	
26	331286	INNER COVER	1	
27	321894	DAMPER	1	
28	336628	MOTOR DC 18V	1	
* 29	329529	INTERNAL WIRE (RED) 140L	1	FOR AUS,THA,IND,SIN,TPE
30	336627	HOUSING (A).(B) SET	1	
* 31	334865	INTERNAL WIRE FERRITE SET	1	FOR FRA,ITA,ISR,KOR
* 32	323165	INTERNAL WIRE (BLACK) 75L	1	FOR AUS,THA,IND,SIN,TPE
33	327002	LOCK NUT M4 (BLACK)	2	
34	336638	PUSHING BUTTON (A)	1	
* 35	336632	SWITCH TERMINAL SET	1	FOR FRA,ITA,ISR,KOR
* 35	336630	SWITCH TERMINAL SET	1	FOR AUS,THA,IND,SIN,TPE
* 36	337137	SUPPORT (D)	1	FOR FRA,ITA,ISR,KOR
37	313687	TAPPING SCREW (W/FLANGE) D3 X 16 (BLACK)	8	
38		NAME PLATE	1	
* 39	333352	BATTERY BSL 1815 (EUROPE)	2	INCLUD.502
* 39	334726	BATTERY BSL 1815 (TPE)	2	INCLUD.502
* 39	337065	BATTERY BSL 1815 (KOR)	2	INCLUD.502
* 39	335788	BATTERY BSL 1825 (EUROPE,AUS,NZL)	2	INCLUD.502
* 39	330068	BATTERY BSL 1830 (EUROPE,AUS,NZL)	2	INCLUD.502

