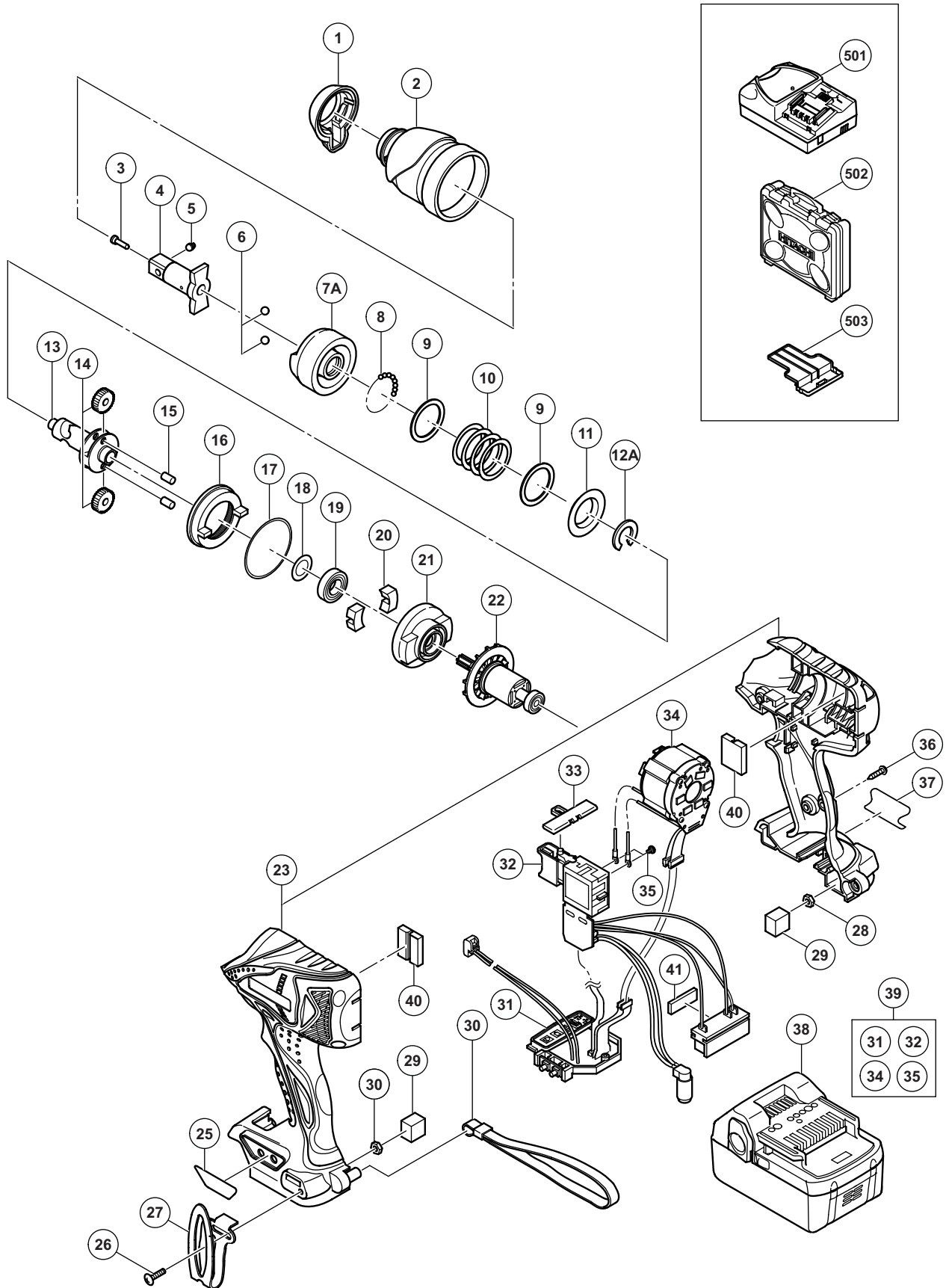


ELECTRIC TOOL PARTS LIST

■ CORDLESS IMPACT WRENCH Model WR 18DBDL

2011·5·12
(E2)



PARTS

WR 18DBDL

ITEM NO.	CODE NO.	DESCRIPTION	NO. USED	REMARKS
1	332-198	FRONT CAP	1	
2	332-200	HAMMER CASE	1	
3	324-257	PIN RETAINER (B)	1	
4	332-196	ANVIL (D) ASS'Y	1	INCLUD. 3, 5
5	324-256	PLUNGER (B)	1	
6	959-154	STEEL BALL D5.556 (10 PCS.)	2	
7A	333-749	HAMMER	1	
8	959-148	STEEL BALL D3.175 (10 PCS.)	28	
9	315-978	WASHER (J)	2	
10	324-224	HAMMER SPRING (F)	1	
11	316-172	WASHER (S)	1	
12A	324-222	STOPPER (B)	1	
13	332-186	SPINDLE	1	
14	326-295	IDLE GEAR SET (2 PCS.)	2	
15	319-914	NEEDLE ROLLER	2	
16	326-787	RING GEAR (E)	1	
17	983-852	O-RING (S-42)	1	
18	319-911	WASHER (E)	1	
19	690-1VV	BALL BEARING 6901VVCMP52L	1	
20	324-230	DAMPER (A)	2	
21	332-185	INNER COVER	1	
22	332-188	ROTOR PINION	1	
23	332-189	HOUSING (A). (B) SET	1	
25	332-207	PANEL SHEET (B)	1	
26	327-001	TRUSS HD. SCREW M4 (BLACK)	1	
27	330-666	HOOK	1	
28	327-002	LOCK NUT M4 (BLACK)	2	
29	330-854	PACKING	2	
30	306-952	STRAP (BLACK)	1	
31	333-360	CONTROLLER	1	
32	332-187	DC-SPEED CONTROL SWITCH	1	
33	324-225	PUSHING BUTTON (B)	1	
34	332-203	STATOR FET PCB	1	
35	994-532	MACHINE SCREW (W/SP. WASHER) M3 X 5	2	
36	301-653	TAPPING SCREW (W/FLANGE) D4 X 20 (BLACK)	9	
37		NAME PLATE	1	
38	330-068	BATTERY BSL 1830 (EUROPE, AUS, NZL)	2	INCLUD. 503
39	333-361	WIRING ASS'Y	1	INCLUD. 31, 32, 34, 35
40	333-750	DAMPER (A)	2	
41	331-101	CUSHION	1	

STANDARD ACCESSORIES

WR 18DBDL

ITEM NO.	CODE NO.	DESCRIPTION	NO. USED	REMARKS
* 501		CHARGER (MODEL UC 18YRSL)	1	
* 501		CHARGER (MODEL UC 18YML2)	1	
502	330-592	CASE	1	
503	329-897	BATTERY COVER	1	

OPTIONAL ACCESSORIES

ITEM NO.	CODE NO.	DESCRIPTION	NO. USED	REMARKS
601	873-537	SOCKET PIN	1	
602	873-187	O-RING (J1SW1516)	1	
603	991-481	FORM TIE SOCKET ASS'Y 11.3MM X 95L	1	INCLUD. 601, 602
604	992-610	UNIVERSAL JOINT ASS'Y	1	INCLUD. 601, 602
605	955-153	UNIVERSAL JOINT PIN	1	
606	991-476	BIT ADAPTER ASS'Y	1	INCLUD. 601, 602
607	944-291	HEX. SOCKET ASS'Y 10MM X 40L	1	INCLUD. 601, 602
608	873-632	HEX. SOCKET ASS'Y 12MM X 40L	1	INCLUD. 601, 602
609	873-539	HEX. SOCKET ASS'Y 13MM X 40L	1	INCLUD. 601, 602
610	873-540	HEX. SOCKET ASS'Y 14MM X 40L	1	INCLUD. 601, 602
611	873-536	HEX. SOCKET ASS'Y 17MM X 32L	1	INCLUD. 601, 602
612	873-624	HEX. SOCKET ASS'Y 19MM X 34L	1	INCLUD. 601, 602
613	873-626	HEX. SOCKET ASS'Y 21MM X 36L	1	INCLUD. 601, 602
614	873-627	HEX. SOCKET ASS'Y 22MM X 40L	1	INCLUD. 601, 602
615	986-058	HEX. SOCKET FOR PLASTIC CONE 12MM X 70L	1	INCLUD. 601, 602
616	873-633	EXTENSION BAR ASS'Y (SQUARE) 12.7MM X 100L	1	INCLUD. 601, 602
617	955-138	HEX. SOCKET ASS'Y (LONG) 12MM X 52L	1	INCLUD. 601, 602
618	955-139	HEX. SOCKET ASS'Y (LONG) 13MM X 52L	1	INCLUD. 601, 602
619	955-140	HEX. SOCKET ASS'Y (LONG) 14MM X 52L	1	INCLUD. 601, 602
620	955-141	HEX. SOCKET ASS'Y (LONG) 17MM X 52L	1	INCLUD. 601, 602
621	955-149	HEX. SOCKET ASS'Y (LONG) 17MM X 75L	1	INCLUD. 601, 602
622	955-142	HEX. SOCKET ASS'Y (LONG) 19MM X 52L	1	INCLUD. 601, 602
623	955-150	HEX. SOCKET ASS'Y (LONG) 19MM X 75L	1	INCLUD. 601, 602
624	955-143	HEX. SOCKET ASS'Y (LONG) 21MM X 52L	1	INCLUD. 601, 602
625	955-151	HEX. SOCKET ASS'Y (LONG) 21MM X 75L	1	INCLUD. 601, 602
626	991-480	HEX. SOCKET ASS'Y (LONG) 21MM X 125L	1	INCLUD. 601, 602
627	955-144	HEX. SOCKET ASS'Y (LONG) 22MM X 52L	1	INCLUD. 601, 602
628	993-658	SOCKET ASS'Y FOR DUCT 12MM X 95L	1	INCLUD. 601, 602, 629
629	993-659	SOCKET FOR DUCT 12MM X 52L	1	
630	992-613	SOCKET ASS'Y FOR DUCT 13MM X 95L	1	INCLUD. 601, 602, 631
631	992-614	SOCKET FOR DUCT 13MM X 52L	1	
632	992-615	SOCKET ASS'Y FOR DUCT 14MM X 95L	1	INCLUD. 601, 602, 633
633	992-616	SOCKET FOR DUCT 14MM X 52L	1	
634	309-922	GREASE FOR IMPACT DRIVER (500G)	1	

