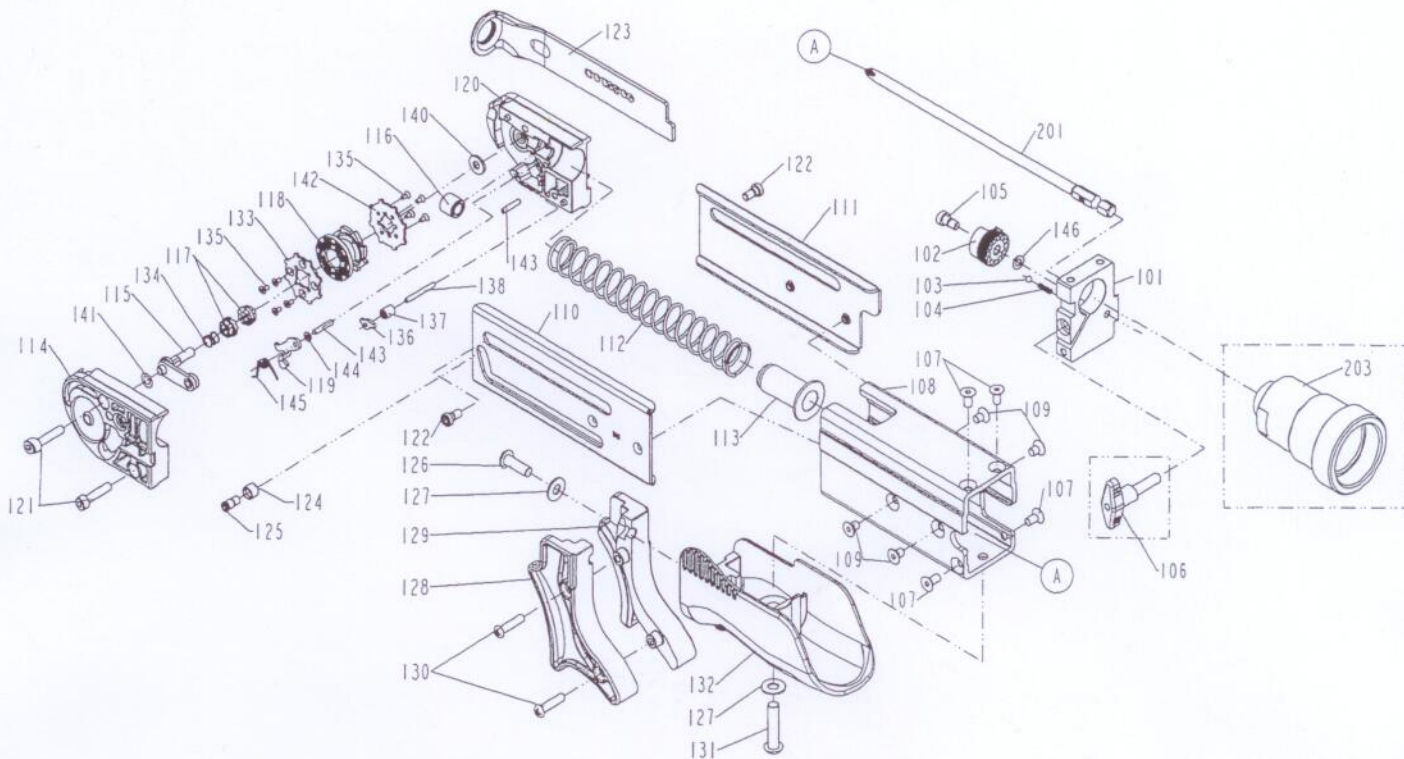


DIAGRAM OF Z4010



ITEM NO.	PART NO.	DESCRIPTION	ITEM NO.	PART NO.	DESCRIPTION	ITEM NO.	PART NO.	DESCRIPTION
101	14341-0030001-1	ANCHOR BLOCK	134	14317-0034701-1	SPRING			
102	14319-0034701-2	ADJUST AXIE	135	2040106-00010-4	SCREW			
103	2040800-01010-0	STEEL BALL	136	14358-0034701-1	STOPPER			
104	14347-0030001-1	POSITIONING SPRING	137	14334-0034701-1	LATCH SPRING BUSHING			
105	14312-0030001-1	SPECIAL SCREW	138	14328-0034701-1	PIN			
106	14226-0034701-1	QUICK RELEASE BOLT	140	14339-0034702-1	GASKET A			
107	2040103-02050-5	COUNTER SUNK SCREW	141	14339-0034703-1	GASKET B			
108	14345-0030001-1	BODY	142	14351-0054701-1	GEAR A			
109	2040103-02090-5	COUNTER SUNK SCREW	143	14328-0054701-1	PIN			
110	14337-0044701-1	GUIDE A	144	2040201-00010-0	FLAT WASHER			
111	14337-0044702-1	GUIDE B	145	14308-0054701-1	SPRING			
112	14317-0030001-1	SPRING	146	14339-0044701-1	GASKET			
113	14344-0034701-1	SPRING BASE	201	14322-0040001-2	DRIVER BIT-PHILLIPS			
114	14307-0034701-2	NOSE PIECE A	203	14214-0034707-1	FIXED SUPPORT UNIT			
115	14207-0034701-1	GUIDE BUSHING UNIT						
116	14335-0030001-1	COLLAR						
117	14362-0030001-1	GEAR						
118	14363-0054701-1	LOCATING WHEEL						
119	14364-0054702-1	POSITIONING SHEET-B						
120	14307-0034702-2	NOSE PIECE						
121	2040101-02090-5	HEX.SOC.HD.BOLT						
122	14315-0030001-1	SCREW						
123	14350-0044701-1	SAFETY						
124	14311-0030001-1	ROLLER						
125	14354-0030001-1	SCREW						
126	2040102-03050-0	HALF ROUND HD.HEX.BOLT						
127	2040201-03020-0	FLAT WASHER						
128	14353-0030001-1	STRIR GUIDE COVER A						
129	14353-0030002-1	STRIR GUIDE COVER B						
130	2040107-02090-0	TAP BOLT						
131	2040102-03020-0	HALF ROUND HD.HEX.BOLT						
132	14318-0044701-1	POSITIONING SHEET						
133	14351-0034702-1	GEAR A						