

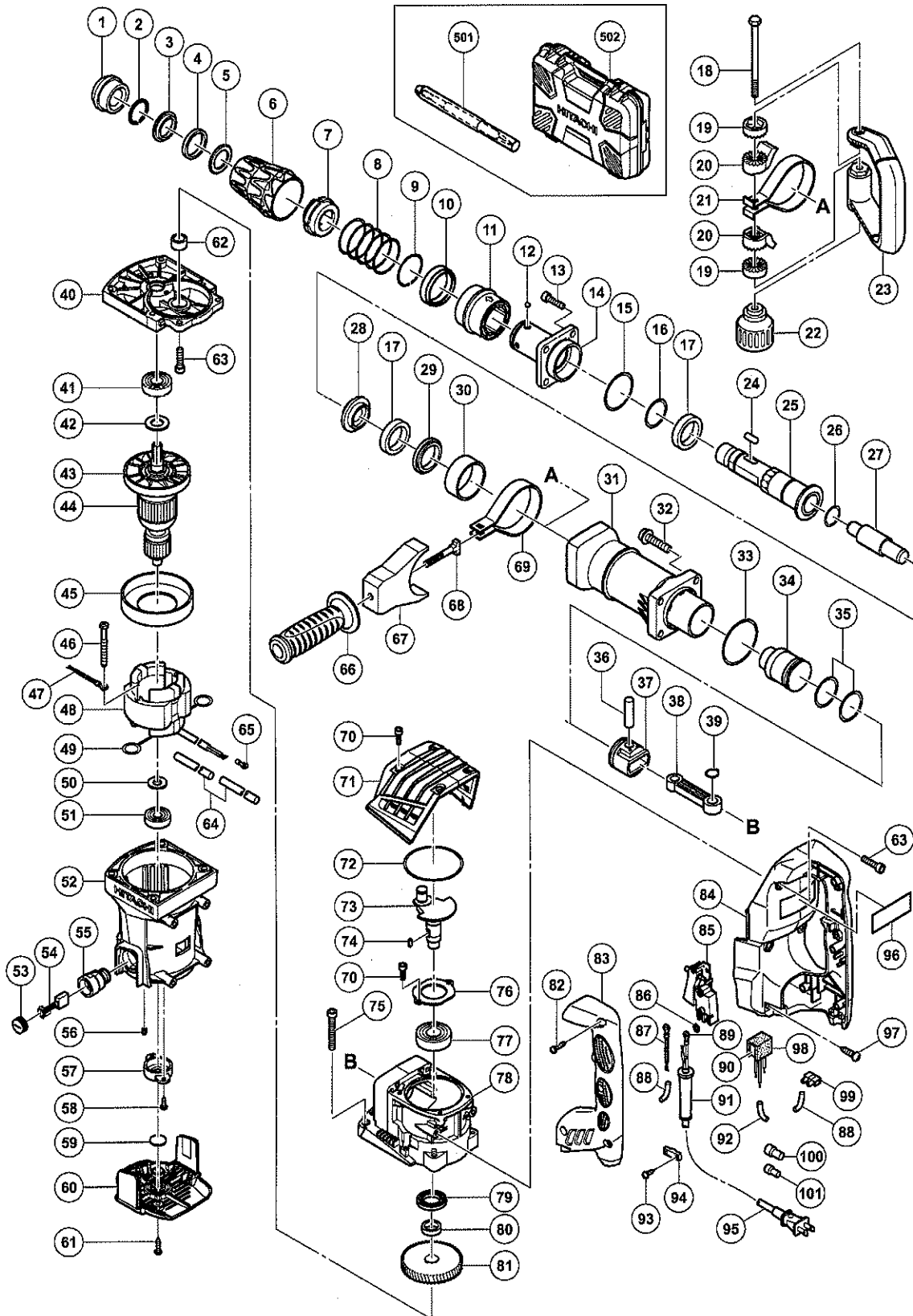
ELECTRIC TOOL PARTS LIST

DEMOLITION HAMMER

2011-2-1

Model H 60MC

(E1)



PARTS

H 60MC

ITEM NO.	CODE NO.	DESCRIPTION	NO. USED	REMARKS
1	333-211	FRONT CAP	1	
2	320-846	RETAINING RING D28	1	
3	333-685	DAMPER HOLDER (A)	1	
4	330-175	DAMPER (A)	1	
5	333-686	DAMPER HOLDER (B)	1	
6	333-192	GRIP (A)	1	
7	320-804	NEEDLE HOLDER	1	
8	333-221	SPRING (A)	1	
9	333-255	STOPPER RING	1	
10	333-687	BALL HOLDER	1	
11	333-197	GRIP (B)	1	
12	959-150	STEEL BALL D6.35 (10 PCS.)	4	
13	985-479	SEAL LOCK HEX. SOCKET HD. BOLT M8 X 25	4	
14	333-195	FRONT COVER	1	
15	317-119	O-RING (S-56)	1	
16	872-767	O-RING (S-32)	1	
17	333-217	DAMPER	2	
* 18	333-228	BOLT M8	1	FOR ESP
* 19	333-202	HANDLE HOLDER (B)	2	FOR ESP
* 20	333-200	HANDLE HOLDER (A)	2	FOR ESP
* 21	333-212	BAND (B)	1	FOR ESP
* 22	333-201	GRIP	1	FOR ESP
* 23	333-199	SIDE HANDLE	1	FOR ESP
24	331-536	NEEDLE ROLLER D8 X 20	2	
25	333-191	RETAINER SLEEVE	1	
26	872-470	O-RING (S-26)	1	
27	333-206	SECOND HAMMER	1	
28	333-216	HAMMER HOLDER	1	
29	333-218	DAMPER WASHER	1	
30	333-219	SLEEVE	1	
31	333-209	CYLINDER CASE	1	
32	990-083	HEX. SOCKET HD. BOLT (W/FLANGE) M8 X 35	4	
33	956-996	O-RING (1AS-60)	1	
34	333-205	STRIKER	1	
35	985-454	O-RING (A) (FPM810)	2	
36	301-509	PISTON PIN	1	
37	317-084	PISTON	1	
38	317-082	CONNECTING ROD	1	
39	939-543	RETAINING RING FOR D14 SHAFT (10 PCS.)	1	
40	333-229	GEAR COVER ASS'Y	1	INCLUD. 62
41	620-3DD	BALL BEARING 6203DDCMPS2L	1	
42	333-222	BEARING WASHER	1	
43	333-196	FAN	1	
* 44	360-899C	ARMATURE ASS'Y 110V	1	INCLUD. 43
* 44	360-899G	ARMATURE ASS'Y 120V	1	INCLUD. 43
* 44	360-899D	ARMATURE ASS'Y 127V	1	INCLUD. 43
* 44	360-899E	ARMATURE ASS'Y 220V-230V	1	INCLUD. 43
* 44	360-899F	ARMATURE ASS'Y 240V	1	INCLUD. 43
45	333-210	FAN GUIDE	1	
46	953-121	HEX. HD. TAPPING SCREW D5 X 50	2	

PARTS

H 60MC

ITEM NO.	CODE NO.	DESCRIPTION	NO. USED	REMARKS
* 47	324-122	INTERNAL WIRE 235L	1	FOR NZL, GBR, SAF, EUROPE, ESP, FIN, NOR, SWE, DEN, AUT, CHN, KOR
* 48	340-780C	STATOR ASS'Y 110V	1	INCLUD. 49
* 48	340-780G	STATOR ASS'Y 120V	1	INCLUD. 49, 65
* 48	340-780D	STATOR ASS'Y 127V	1	INCLUD. 49, 65
* 48	340-780E	STATOR ASS'Y 220V-230V	1	INCLUD. 49
* 48	340-790E	STATOR ASS'Y (B) 220V-230V	1	INCLUD. 49 FOR NZL, GBR (230V), SAF, EUROPE, ESP, FIN, NOR, SWE, DEN, AUT, CHN, KOR
* 48	340-780F	STATOR ASS'Y 240V	1	INCLUD. 49
49	945-932	BRUSH TERMINAL	2	
50	944-954	BEARING WASHER	1	
51	620-1DD	BALL BEARING 6201DDCMPS2L	1	
52	333-213	HOUSING ASS'Y	1	INCLUD. 55, 56
53	940-540	BRUSH CAP	2	
54	999-044	CARBON BRUSH (1 PAIR)	1	
54	999-074	CARBON BRUSH (AUTO STOP TYPE) (1 PAIR)	1	
55	980-487	BRUSH HOLDER	2	
56	938-477	HEX. SOCKET SET SCREW M5 X 8	2	
57	328-918	BEARING HOLDER	1	
58	984-750	TAPPING SCREW (W/FLANGE) D4 X 16	2	
59	333-225	DUST SEAL	1	
60	333-193	TAIL COVER	1	
61	302-089	TAPPING SCREW (W/FLANGE) D5 X 20 (BLACK)	2	
62	985-442	NEEDLE BEARING (A) (BK1512)	1	
63	987-707	SEAL LOCK HEX. SOCKET HD. BOLT M6 X 25	4	
64	326-541	VINYL TUBE (I.D.9.5 X T0.56 X 85)	2	
* 65	930-804	TERMINAL M4.0 (10 PCS.)	1	FOR BRA (127V), PAN (120V), MEX
* 66	330-209	SIDE HANDLE	1	EXCEPT FOR ESP
* 67	333-198	MOUNT	1	EXCEPT FOR ESP
* 68	333-227	HANDLE BOLT	1	EXCEPT FOR ESP
* 69	333-226	BAND	1	EXCEPT FOR ESP
70	990-079	SEAL LOCK HEX. SOCKET HD. BOLT M5 X 16	6	
71	333-194	CRANK COVER	1	
72	326-257	O-RING (I.D 74.5)	1	
73	333-204	CRANK SHAFT	1	
74	940-533	FEATHER KEY 3 X 3 X 10	1	
75	986-491	SEAL LOCK HEX. SOCKET HD. BOLT M6 X 50	4	
76	333-220	BEARING COVER	1	
77	620-4DD	BALL BEARING 6204DDCMPS2L	1	
78	333-186	CRANK CASE	1	
79	995-403	OIL SEAL	1	
80	995-402	DISTANCE RING (C)	1	
81	333-207	FIRST GEAR	1	
82	305-490	TAPPING SCREW (W/FLANGE) D4 X 30 (BLACK)	4	
83	333-189	HANDLE COVER	1	
84	333-187	HANDLE	1	
85	306-143	SWITCH (B) (1P SCREW TYPE) W/LOCK	1	
* 86	949-423	WASHER M4 (10 PCS.)	1	FOR GBR, SAF, EUROPE, ESP, FIN, NOR, SWE, DEN, AUT, CHN, KOR

PARTS

H 60MC

ITEM NO.	CODE NO.	DESCRIPTION	NO USED	REMARKS
*	87	981-974 INTERNAL WIRE	1	EXCEPT FOR VEN,BRA (127V), PAN (120V), GBR (110V), MEX
*	87	306-681 INTERNAL WIRE	1	FOR VEN, GBR (110V)
	88	VINYL TUBE (I.D.7 X T0.5 X 30)	2	
*	89	980-063 TERMINAL	1	EXCEPT FOR VEN, THA, GBR (110V), PAN (120V), MEX
*	89	930-804 TERMINAL M4.0 (10 PCS.)	1	FOR PAN (120V), MEX
*	90	325-566 NOISE SUPPRESSOR	1	FOR NZL, GBR, SAF, EUROPE, ESP, FIN, NOR, SWE, DEN, AUT, CHN, KOR
*	91	953-327 CORD ARMOR D8.8	1	
*	91	938-051 CORD ARMOR D10.1	1	
*	92	TUBE (A) I.D.7 X T0.25 X 70	1	FOR NZL, GBR, SAF, EUROPE, ESP, FIN, NOR, SWE, DEN, AUT, CHN, KOR
	93	984-750 TAPPING SCREW (W/FLANGE) D4 X 16	2	
	94	960-266 CORD CLIP	1	
*	95	500-390Z CORD	1	(CORD ARMOR D8.8)
*	95	500-206Z CORD	1	(CORD ARMOR D10.1) FOR VEN, THA
*	95	500-406Z CORD	1	(CORD ARMOR D8.8) FOR SIN, KUW
*	95	500-235Z CORD	1	(CORD ARMOR D8.8) FOR PAN (220V), INA, IND
*	95	500-434Z CORD	1	(CORD ARMOR D8.8) FOR PAN (120V), MEX
*	95	500-467Z CORD	1	(CORD ARMOR D10.1) FOR GBR (110V)
*	95	500-446Z CORD	1	(CORD ARMOR D8.8) FOR GBR (230V)
*	95	500-408Z CORD	1	(CORD ARMOR D8.8) FOR NZL
*	95	500-457Z CORD	1	(CORD ARMOR D8.8) FOR CHN
*	95	500-440Z CORD	1	(CORD ARMOR D8.8) FOR HKG
*	95	500-475Z CORD	1	(CORD ARMOR D8.8) FOR KOR
*	95	500-487Z CORD	1	(CORD ARMOR D8.8) FOR BRA
	96	NAME PLATE	1	
	97	333-364 TAPPING SCREW D6 X 30	4	
*	98	317-492 SUPPORT (B)	1	FOR NZL, GBR, SAF, EUROPE, ESP, FIN, NOR, SWE, DEN, AUT, CHN, KOR
*	99	938-307 PILLAR TERMINAL	1	EXCEPT FOR VEN, THA, INA, SIN, KUW, IND, HKG, BRA (220V), PAN (220V)
*	100	959-141 CONNECTOR 50092 (10 PCS.)	2	FOR VEN, THA, INA, BRA (220V), PAN (220V), SIN, KUW, IND, HKG
*	100	959-141 CONNECTOR 50092 (10 PCS.)	1	FOR NZL, GBR, SAF, EUROPE, ESP, FIN, NOR, SWE, DEN, AUT, CHN, KOR
*	101	959-140 CONNECTOR 50091 (10 PCS.)	1	FOR NZL, GBR, SAF, EUROPE, ESP, FIN, NOR, SWE, DEN, AUT, CHN, KOR

STANDARD ACCESSORIES

H 60MC

ITEM NO.	CODE NO.	DESCRIPTION	NO. USED	REMARKS
* 501	313-471	BULL POINT (SDS MAX) 280L	1	FOR GBR, EUROPE, ESP, FIN, NOR, SWE, DEN, AUT
502	333-190	CASE	1	

OPTIONAL ACCESSORIES

ITEM NO.	CODE NO.	DESCRIPTION	NO. USED	REMARKS
601	333-214	SIDE HANDLE ASS'Y	1	INCLUD. 66-69
602	333-215	SIDE HANDLE ASS'Y	1	INCLUD. 18-23
603	981-840	GREASE (A) FOR HAMMER.HAMMER DRILL (30G)	1	
604	308-471	GREASE FOR HAMMER.HAMMER DRILL (70G)	1	
* 605	980-927	GREASE FOR HAMMER.HAMMER DRILL (500G)	1	EXCEPT FOR PAN (120V)
606	313-471	BULL POINT (SDS MAX) 280L	1	
607	313-472	BULL POINT (SDS MAX) 400L	1	
608	313-473	COLD CHISEL (SDS MAX) 280MM	1	
609	313-474	COLD CHISEL (SDS MAX) 400MM	1	
610	313-475	CUTTER (SDS MAX) W50 X 400L	1	
611	313-476	SCOOP (SDS MAX) 400L	1	
612	313-477	BUSHING TOOL (SDS MAX)	1	
613	313-478	RAMMER (SDS MAX) 150MM X 150MM	1	
614	313-479	SHANK (SDS MAX) FOR RAMMER, BUSHING TOOL	1	