

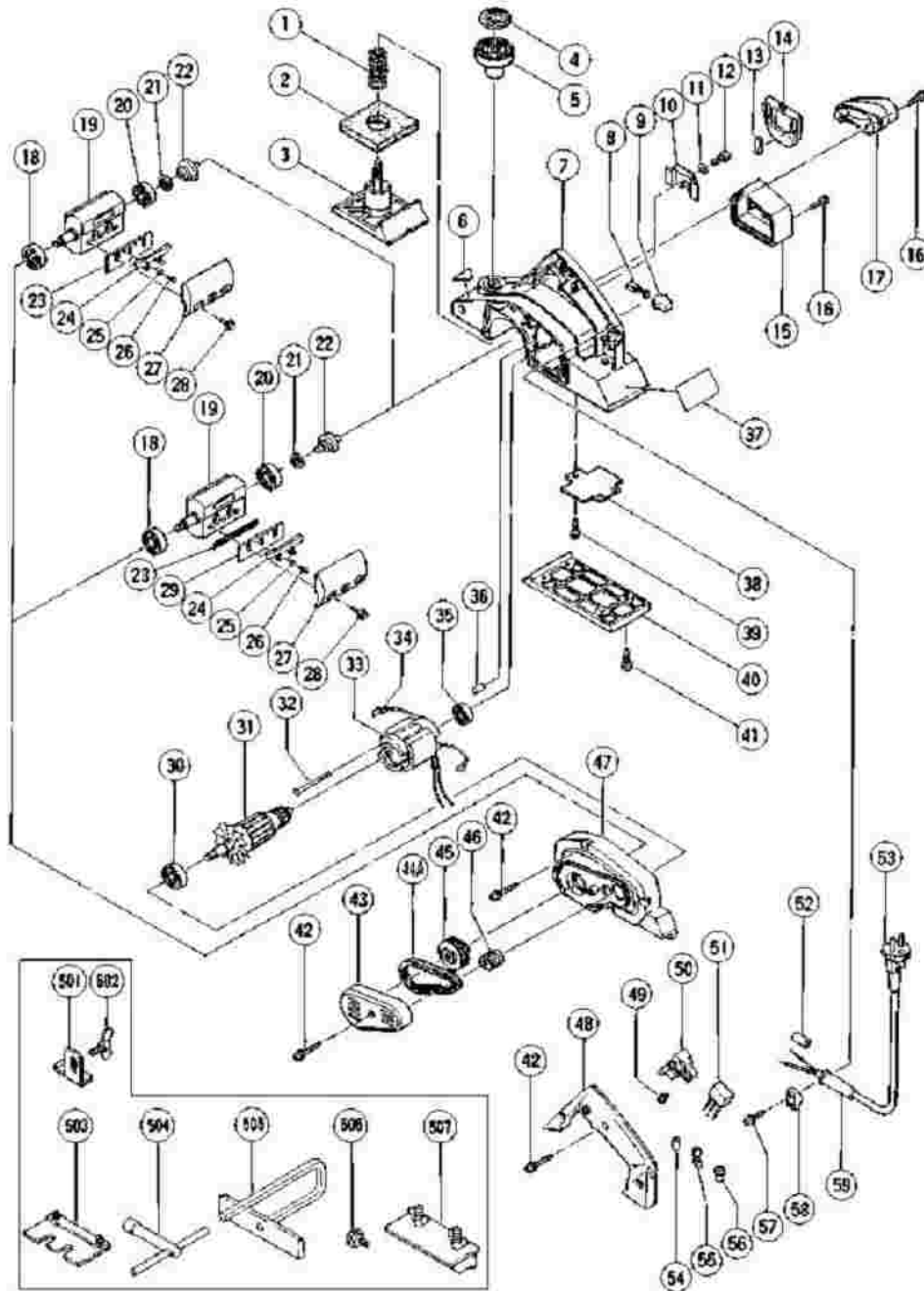
HITACHI

LIST NO. 0662

ELECTRIC TOOL PARTS LIST

■ PLANER
Model P 20SA2

2001·6·1
(E1-1)



P20SA2

Pos. Nr.	Art. Nr.	Beschreibung	Stueck	Kommentar
1	958-709	FEDER F30A/P20SA/SA2/SE/SD	1	
2	958-708	GUMMIDICHTUNG P20SA/SA2/SE	1	
3	958-831Z	VORDERE GRUNDPLATTE P20SA/SA2/SE	1	
4	316-417	SKALA P20SA2/SE	1	
5	942-328	STELLKNOPF F30A/P20SA/SA2/SD/SE	1	
6			1	
7	990-658	GEHÄUSE P20SA/SA2/SE	1	INCLUD.32,36
8	999-041	KOHLLENBÜRSTEN (PAAR)	2	
9	955-203	KOHLLENHALTER DIV.TYPEN	2	
10	958-838Z	SCHUTZDECKEL P20SA/SA2/SE	1	
11	949-453	FEDERSCHEIBE M4 (10ST)	2	
12	949-217	+KOPFSCHRAUBE M4X12 (10ST)	2	
13	958-839Z	MAGNET F30A/P20SA/SA2/SE	2	
14	958-837Z	MESSERSCHUTZDECKEL P20SA/SA2/SE	1	
15	958-835Z	HINTERE ABDECKUNG P20SA/SA2/SE	1	
16	307-811	SCHNEIDSCHRAUBE D4X16 M.FLANSCH	4	
17	958-836Z	SPÄNEAUSWURF P20SA/SA2/SE	1	
18	620-1VV	KUGELLAGER 6201 VV	1	
19	316-	MESSERBLOCK	1	INCLUD.18,20-22

	418	KOMPL.M.KUGELLAGER		
20	629-VVM	KUGELLAGER 629 VVM	1	
21	958-915	SCHEIBE (A) F30A/P20SA2/SE	1	
22	958-824Z	WELLE (B) F30A/P20SA/SA2/SE	1	
23	314-746	HOBELMESSER 82MM	2	
23	879-418	HM-HOBELWENDEMESSER 82MM (1PAAR)	2	FOR NZL,GBR,FRG,FRA,HOL,FIN,AUT,NL
			0	SUI
24	314-754	HALTEPLATTE (A) P20SD/SA2/SE	2	
25	949-423	UNTERLEGSCHNEIBE M4 (10ST)	4	
26	949-213	+KOPFSCHRAUBE M4X5 (10ST)	4	
27	958-850Z	MESSERHALTER (1PAAR) P20SA/SA2/SE	2	
28	990-669	SPEZIALSCHRAUBE M6X18 M.U-SCHEIBE	6	
29	314-740	MESSERHALTER (B) (1PAAR)	2	
30	620-0VV	KUGELLAGER 6200 VV	1	
31	990-652C		1	
31	990-652E	ANKER 220V-230V P20SA/SA2/SE	1	
31	990-652F		1	
32	963-712	SECHSKANTSCHNEIDSCHRAUBE D4X65	2	
33	990-651K		1	INCLUD.34
33	990-651E		1	INCLUD.34
33	990-		1	INCLUD.34

	651H			
33	990-651G		1	INCLUD.34 FOR NZL
33	990-651J	STATOR 220V-230V P20SA/SA2/SE	1	INCLUD.34 FOR GBR,SAF,ITA,FRG,FRA,HOL,
			0	FIN,AUT,NOR,ESP,SUI
34	941-615	KOHLLENHALTERKLEMME P20SA/SA2/SE	2	
34	958-857Z	KOHLLENHALTERKLEMME P20SA/SA2/SE	2	FOR GBR,SAF,ITA,FRG,FRA,HOL,FIN,AU
			0	ESP,SUI
35	608-VVM	KUGELLAGER 608 VVM	1	
36	963-227	LAGERVERRIEGELUNG P20SA/SA2/SE	1	
37			1	
38	958-844Z	ABDECKPLATTE P20SA/SA2/SE	1	
39	930-446	SCHNEIDSCHRAUBE D4X16 M.U- SCHEIBE	1	
40	958-833Z	HINTERE GRUNDPLATTE P20SA/SA2/SE	1	
41	954-004	SCHNEIDSCHRAUBE D4X16	4	
42	307-028	SCHNEIDSCHRAUBE D4X25 MIT FLANSCH	8	
43	958-830Z	RIEMENSCHUTZDECKEL P20SA/SA2/SE	1	
44A	317-747		1	
45	990-661	RIEMENSCHLEIBE (B) P20SA/SA2/SE	1	
46	990-660	RIEMENSCHLEIBE (A) P20SA/SA2/SE	1	
47	990-659	ENDDECKEL P20SA/SA2/SE	1	
48	958-854Z	GRIFFABDECKUNG P20SA/SA2/SE	1	
49	305-499	" +KOPFSCHRAUBE M3,5X6 M.U- SCHEIBE "	2	

50	957-747	SCHALTER CR10V/CR12V/u.a.	1	
50	971-667Z	SCHALTER CM6/CR10V/CR12V/D13/u.a.	1	FOR SAF
50	963-756Z	SCHALTER C6U/C7U/CR10V/CR12V u.a.	1	FOR NZL,AUS,GBR,ITA,FRG,FRA,HOL,FI
			0	NOR,ESP,SUI
51	994-273	KONDENSATOR DIV.TYPEN	1	FOR NZL,AUS,GBR,SAF,ITA,FRG,FRA,HC
			0	AUT,NOR,ESP,SUI
52	981-373	ADERENDHÜLSE (D) DIV.TYPEN	2	FOR CORD
53	500-212Z		1	(CORD ARMOR D8.8)
53	500-439Z		1	(CORD ARMOR D8.8) FOR NZL,AUS
53	500-435Z		1	(CORD ARMOR D8.8) FOR GBR (230'
53	500-247Z	ANSCHLUSSKABEL MIT STECKER	1	(CORD ARMOR D10.2) FOR FIN,NOR
53	500-234Z	ANSCHLUSSKABEL MIT STECKER	1	(CORD ARMOR D8.8) FOR ITA,FRG,FRA,HOL,
			0	AUT,ESP,SAF
53	500-248Z		1	(CORD ARMOR D10.2) FOR SUI
53A	500-461Z		1	(CORD ARMOR D8.8) FOR GBR (110'
54	981-373	ADERENDHÜLSE (D) DIV.TYPEN	2	FOE NZL,GBR,SAF,ITA,FRG,FRA,HOL,FI
			0	NOR,ESP,SUI
55	959-144	KABELSCHUH 50051 (10ST) DIV.TYPEN	1	FOR NOISE SUPPRESSOR
56	959-140	VERBINDER 50091 (10ST) DIV.TYPEN	1	
57	984-750	SCHNEIDSCHRAUBE D4X16 MIT FLANSCH	2	
58	937-631	KABELKLEMME DIV.TYPEN	1	
59	303-662	KABELKNICKSCHUTZ D8.8 DIV.TYPEN	1	

59	980-193	KABELKNICKSCHUTZ D10.2 DIV.TYPEN	1	
501	958-840Z	TIEFENANSCHLAG F30A/P20SA	1	
502	949-395	FLÜGELSCHRAUBE M5X6 (10ST)	1	
503	316-419	EINSTELLEHRE P20DA/SA2/SE	1	
504	940-543	STECKSCHLÜSSEL 10MM C8FS/P20SA	1	
505	958-842Z	PARALLELANSCHLAG P20SA/SE	1	
506	940-650	ANSCHLAGSCHRAUBE F20A/F30A	1	
507	314-767	MESSERHALTER ZUM SCHLEIFEN	1	FOR THA,ITA,HOL