

# HITACHI

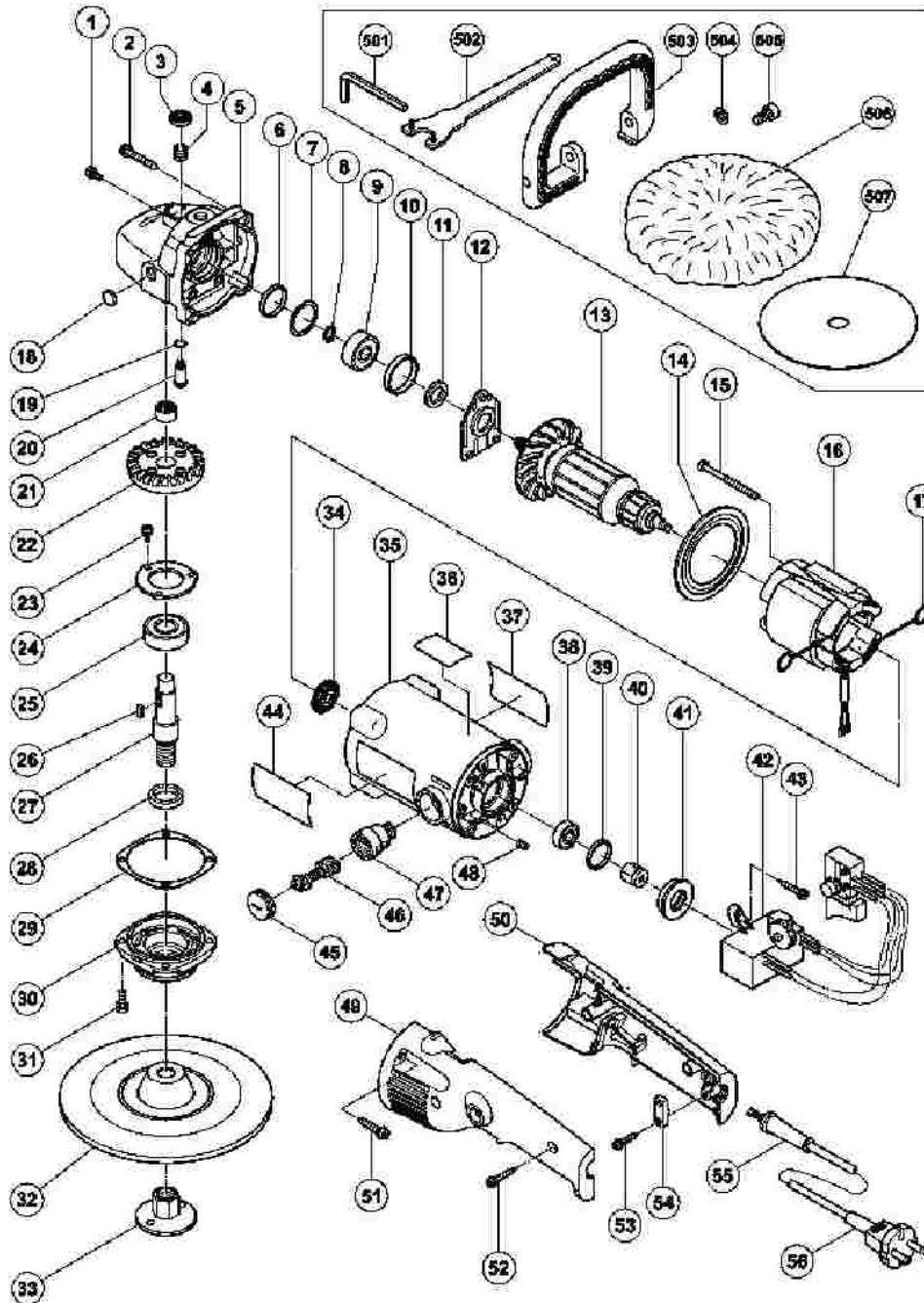
LIST NO. 0352

## ELECTRIC TOOL PARTS LIST

■ ELECTRONIC SANDER POLISHER 2002・6・20

Model SP 18VA

(E1)



## SP18VA

Pos. Nr.	Art. Nr.	Beschreibung	Stueck	Kommentar	Beschreibung
1	303-255	+KOPFSCHRAUBE M4X10 M.FEDERRING	3		SEAL LOCK SCREW (W/SP. WASHER) M4X10
2	305-507	SCHNEIDSCHRAUBE D5X30 M.FLANSCH	4		TAPPING SCREW (W/FLANGE) D5X30
3	306-888	ARRETIERKNOPF CM12Y/G18U/G23U u.a	1		PUSHING BUTTON
4	306-889	FEDER CM12Y/G18U/G23U u.a.	1		SPRING
5	320-936		1	"INCLUD.3,4,18-21"	GEAR COVER ASS'Y
6	315-055		1		SEAL RING (A)
7	315-054		1		WASHER (A)
8	939-540	SICHERUNGSRING D10 (10ST)	1		RETAINING RING FOR D10 SHAFT (10 PCS.)
9	620-0DD		1		BALL BEARING 6200DDCMPS2L
10	315-053		1		RUBBER RING (A)
11	315-052		1		FELT PACKING (B)
12	315-051		1		BEARING COVER (B)
13	360- 576U		1	"INCLUD.9,11,34,38"	ARMATURE ASS'Y 110V- 120V
13	360-576E		1		ARMATURE 220V-240V
14	315-046		1		FAN GUIDE
15	961-501	SCHNEIDSCHRAUBE D5X60	2		HEX. HD. TAPPING SCREW D5X60
16	340- 526C		1	INCLUD.17	STATOR ASS'Y 110V
16	340- 526D		1	INCLUD.17	STATOR ASS'Y 120V
16	340-526E		1	INCLUD.17	STATOR ASS'Y 220V-240V
17	930-703	KOHLLENHALTERKLEMME DH28Y u.a.	2		BRUSH TERMINAL

18	315-049	FILZDICHTUNG G12SA2	1		FELT WASHER
19	320-218		1		O-RING
20	315-050		1		LOCK PIN
21	871-397	NADELLAGER (HK1210) CR10V/D10YA	1		NEEDLE BEARING (NTN HK1210)
22	320-937		1		GEAR
23	987-201	+KOPFSCHRAUBE M4X10 M.FEDERRING	3		SEAL LOCK SCREW (W/SP. WASHER) M4X10
24	937-077	LAGERDECKEL (A) CR10V/G13SC	1		BEARING COVER (A)
25	620-2DD	KUGELLAGER 6202 DD	1		BALL BEARING 6202DDCMLS2L
26	940-533	KEIL 3X3X10 G13SC/G15SA u.a.	1		FEATHER KEY 3X3X10
27	320-943		1		SPINDLE
27	320-944		1	"FOR USA,CAN"	SPINDLE
28	315-062		1		FELT PACKING (A)
29	315-060		1		SEAL PACKING
30	315-061		1		PACKING GLAND
31	315-636		4		SEAL LOCK SCREW (W/SP.WASHER) M5X14(BLACK
32	953-255		1	"FOR USA,CAN"	RUBBER PAD (D16 HOLE)
32	953-247Z	ELASTISCHER SCHLEIFTELLER • E78	1		RUBBER PAD (D14 HOLE)
32	321-645		1	"FOR USA,CAN"	BACKING PAD
33	953-246Z	MUTTER F.ELAST.SCHLEIFTELLER	1		WASHER NUT M14
33	953-254P		1	"FOR USA,CAN"	"WASHER NUT 5/8"-11UNC"
34	315-047		1		DUST SEAL
35	320-945		1	"INCLUD.39,41,47,48"	HOUSING ASS'Y
36	320-948		1		SETTING LABEL
37			1		NAME PLATE
38	608- VVM	KUGELLAGER 608 VVM	1		BALL BEARING 608VVC2PS2L
		GUMMIRING			

39	995-662	G12SE/G13YB1/G13V	1		RUBBER RING
40	318-721	MAGNET DC120VA /G13V/G13YD	1		MAGNET
41	320-946		1		BEARING BUSHING
42	320-941		1	INCLUD.57	CONTROLLER SWITCH ASS'Y
42	320-940		1	"INCLUD.57 FOR GBR (110V),USA,CAN"	CONTROLLER SWITCH ASS'Y
43	305-095	SCHNEIDSCHRAUBE D4X20 M.FLANSCH	2		TAPPING SCREW (W/FLANGE) D4X20
44			1		HITACHI LABEL
45	945-161	KOHLLENKAPPE C6U/C7U u.a.	2		BRUSH CAP
46	999-043	KOHLLENBÜRSTEN (PAAR)	2		CARBON BRUSH (1 PAIR)
47	958-900	KOHLLENHALTER F30A/C6U-C9U u.a.	2		BRUSH HOLDER
48	938-477	INBUSSTIFTSCHRAUBE M5X8	2		HEX. SOCKET SET SCREW M5X8
49	320-939		1		HANDLE (B)
50	320-938		1		HANDLE (A)
51	302-089	SCHNEIDSCHRAUBE D5X20 M.FLANSCH	4		TAPPING SCREW (W/FLANGE) D5X20 (BLACK)
52	302-086	SCHNEIDSCHRAUBE D4X20 M.FLANSCH	2		TAPPING SCREW (W/FLANGE) D4X20 (BLACK)
53	984-750	SCHNEIDSCHRAUBE D4X16 MIT FLANSCH	2		TAPPING SCREW (W/FLANGE) D4X16
54	937-631	KABELKLEMME DIV.TYPEN	1		CORD CLIP
55	953-327	KABELKNICKSCHUTZ D8.8 DIV.TYPEN	1		CORD ARMOR D8.8
56	500-234Z	ANSCHLUSSKABEL MIT STECKER	1	(CORD ARMOR D8.8)	CORD
56	500-435Z		1	"(CORD ARMOR D8.8) FOR HKG,GBR (230V)"	CORD

56	500-439Z		1	"(CORD ARMOR D8.8) FOR NZL,AUS"	CORD
56	500-396Z		1	(CORD ARMOR D8.8) FOR GBR (110V)	CORD
56	500-247Z	ANSCHLUSSKABEL MIT STECKER	1	"(CORD ARMOR D8.8) FOR NOR,SWE,DEN,FIN"	CORD
56	500-447Z		1	(CORD ARMOR D8.8) FOR SUI	CORD
56	500-241Z		1	"(CORD ARMOR D8.8) FOR USA,CAN"	CORD
57	321-449		1		SWITCH (1P PILLAR TYPE) W/LOCK
501	955-857		1		HEX. BAR WRENCH 8MM
502	937-913Z	STIRNLOCHSCHLÜSSEL DIV.WS-TYPEN	1		WRENCH
503	320-949		1		LOOP HANDLE
504	949-434	UNTERLEGSCHEIBE M10 (10ST)	2		BOLT WASHER M10 (10 PCS.)
505	949-844		2		HEX. SOCKET HD. BOLT M10X20 (10 PCS.)
506	949-103	LAMMFELLHAUBE 180MM SAT180	1	"EXCEPT FOR FRA,SUI,USA,CAN"	WOOL BONNET 180MM
507	314-090	SCHLEIFPAPIER K c-p 50 SP18SA	1	"EXCEPT FOR FRA,SUI,USA,CAN"	SANDING DISCS 180MM C-P50 (10 PCS.)
601	314-084	SCHLEIFPAPIER K c-p 16 SP18SA	1		SANDING DISCS 180MM C-P16 (10 PCS.)
602	314-085	SCHLEIFPAPIER K c-p 20 SP18SA	1		SANDING DISCS 180MM C-P20 (10 PCS.)
603	314-086	SCHLEIFPAPIER K c-p 24 SP18SA	1		SANDING DISCS 180MM C-P24 (10 PCS.)
604	314-088	SCHLEIFPAPIER K c-p 36 SP18SA	1		SANDING DISCS 180MM C-P36 (10 PCS.)
605	314-089	SCHLEIFPAPIER K c-p 40 SP18SA	1		SANDING DISCS 180MM C-P40 (10 PCS.)
606	314-090	SCHLEIFPAPIER K c-p 50 SP18SA	1		SANDING DISCS 180MM C-P50 (10 PCS.)

607	314-091	SCHLEIFPAPIER K c-p 60 SP18SA	1		SANDING DISCS 180MM C-P60 (10 PCS.)
608	314-093	SCHLEIFPAPIER K c-p 100 SP18SA	1		SANDING DISCS 180MM C-P100 (10 PCS.)
609	949-103	LAMMFELLHAUBE 180MM SAT180	1	"FOR FRA,SUI,USA,CAN"	WOOL BONNET 180MM
610	994-322	SEITENGRIFF G12SE/G13SB/G13SB2	1		SIDE HANDLE
611	959-736		1	"FOR USA,CAN"	SPONGE PAD 170MM (MAGIC TYPE)
			0		