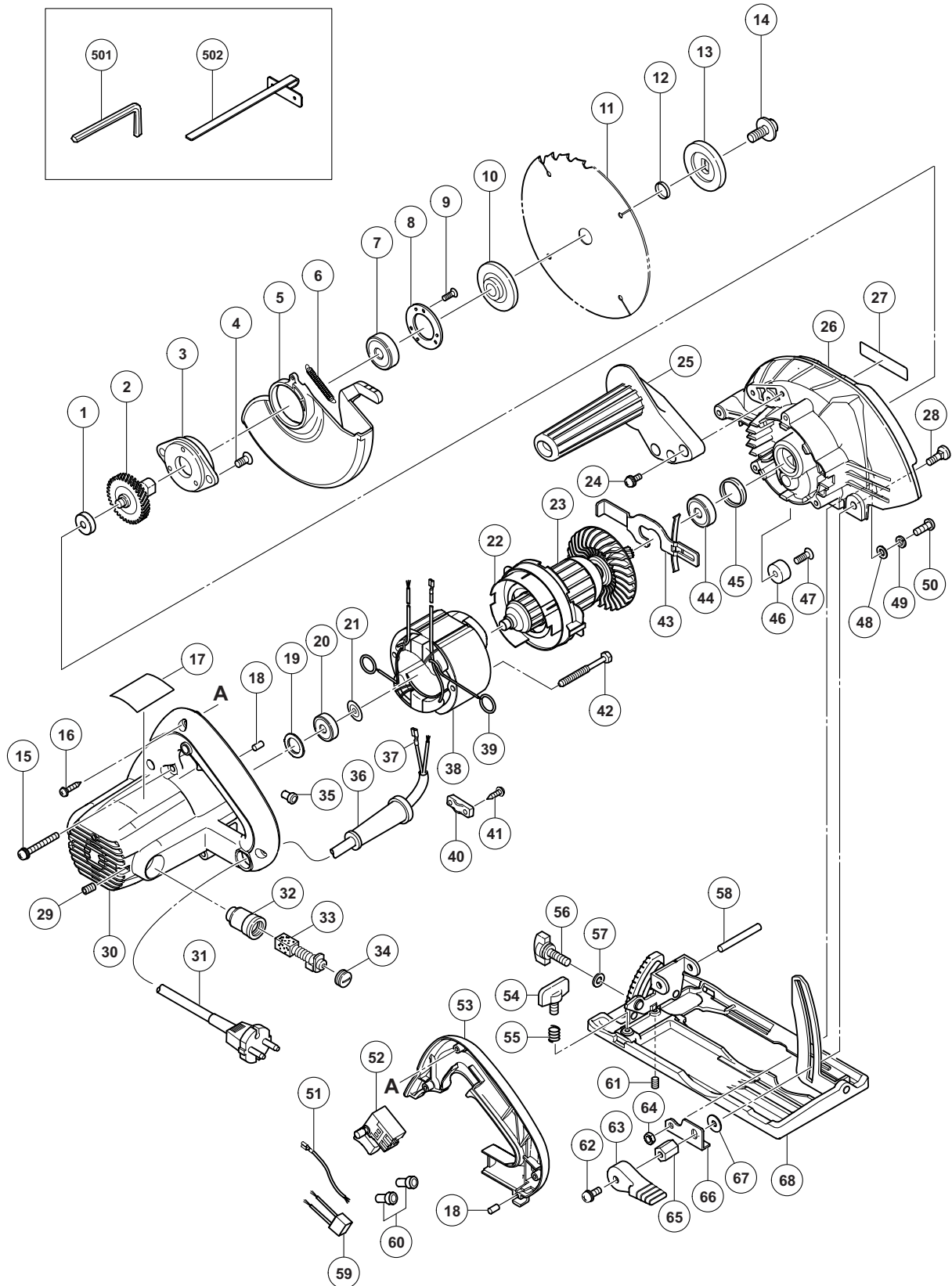


ELECTRIC TOOL PARTS LIST

CIRCULAR SAW
Model C 6SS

2009·6·18
(E1)



PARTS

C 6SS

ITEM NO.	CODE NO.	DESCRIPTION	NO. USED	REMARKS
1	963-803	METAL	1	
* 2	322-088	SPINDLE AND GEAR SET	1	
* 2	331-705	SPINDLE AND GEAR SET	1	FOR CHI, PAN, MEX
3	308-361	BEARING HOLDER	1	
4	305-568	SEAL LOCK FLAT HD. SCREW M5 X 12	2	
5	331-266	PROTECTIVE COVER	1	
6	331-268	RETURN SPRING	1	
7	600-2VV	BALL BEARING 6002VVCMP2L	1	
8	308-362	BEARING COVER	1	
9	308-773	SEAL LOCK FLAT HD. SCREW M3 X 12	3	
* 10	323-928	WASHER (A)	1	
* 10	322-099	WASHER (A)	1	FOR NZL, AUS, VEN, THA, INA, SIN, KUW, IND
* 10	317-466	WASHER (A1)	1	FOR CHI, PAN, MEX
* 11	324-678	TCT SAW BLADE 165MM-D30 HOLE-NT16	1	
* 11	330-889	TCT SAW BLADE 165MM-D20 HOLE-NT16	1	FOR NZL, AUS, VEN, THA, INA, SIN, KUW, IND
* 11	331-658	TCT SAW BLADE 165MM-D15.9 HOLE-NT16	1	FOR CHI, PAN, MEX
* 12	990-100	RING D15.9/I.D14.5	1	FOR CHI, PAN, MEX
* 13	323-924	WASHER (B)	1	
* 13	324-563	WASHER (B2)	1	FOR CHI, PAN, MEX
14	325-541	HEX. SOCKET HD. BOLT (W/WASHER) M7 X 17.5	1	
15	302-434	MACHINE SCREW (W/WASHERS) M5 X 45 (BLACK)	3	
16	328-643	TAPPING SCREW (W/FLANGE) D4 X 23 (BLACK)	3	
17		NAME PLATE	1	
18	931-701	BEARING LOCK	2	
19	331-264	THRUST WASHER	1	
20	608-VVM	BALL BEARING 608VVC2PS2L	1	
21	982-631	WASHER (A)	1	
22	322-002	FAN GUIDE	1	
* 23	360-883C	ARMATURE 110V	1	
* 23	360-883D	ARMATURE 120V	1	
* 23	360-883E	ARMATURE 220V-230V	1	
* 23	360-883F	ARMATURE 240V	1	
* 24	887-021	SCREW (W/WHASHERS) M5 X 16 (BLACK)	3	EXCEPT FOR VEN, THA, INA, SIN, KUW, IND
* 25	330-973	SIDE HANDLE	1	EXCEPT FOR VEN, THA, INA, SIN, KUW, IND
26	331-265	GEAR COVER ASS'Y	1	INCLUD. 45-47
27		HITACHI LABEL	1	
28	942-808	BOLT (SQUARE) M6 X 20	1	
29	938-477	HEX. SOCKET SET SCREW M5 X 8	2	
30	331-260	HOUSING ASS'Y	1	INCLUD. 29, 32
* 31	500-409Z	CORD	1	(CORD ARMOR D8.8)
* 31	500-435Z	CORD	1	(CORD ARMOR D8.8) FOR GBR (230V), KUW
* 31	500-461Z	CORD	1	(CORD ARMOR D8.8) FOR GBR (110V)
* 31	500-247Z	CORD	1	(CORD ARMOR D8.8) FOR FIN, NOR, SWE, DEN
* 31	500-447Z	CORD	1	(CORD ARMOR D8.8) FOR SUI, CHI
* 31	500-439Z	CORD	1	(CORD ARMOR D8.8) FOR NZL, AUS
* 31	500-455Z	CORD	1	(CORD ARMOR D8.8) FOR VEN
* 31	500-468Z	CORD	1	(CORD ARMOR D8.8) FOR THA
* 31	500-231Z	CORD	1	(CIRD ARMOR D8.8) FOR SIN
* 31	500-240Z	CORD	1	(CORD ARMOR D8.8) FOR MEX, PAN (120V)
32	957-051	BRUSH HOLDER	2	

PARTS

C 6SS

ITEM NO.	CODE NO.	DESCRIPTION	NO. USED	REMARKS
33	999-043	CARBON BRUSH (1 PAIR)	2	
34	935-829	BRUSH CAP	2	
* 35	959-140	CONNECTOR 50091 (10 PCS.)	1	FOR VEN, THA, INA, IND, PAN, SIN, KUW, MEX, CHI
36	953-327	CORD ARMOR D8.8	1	
37	331-707	FASTON	1	
* 38	340-614C	STATOR ASS'Y 110V	1	INCLUD. 39
* 38	340-756C	STATOR ASS'Y 110V	1	INCLUD. 39 FOR VEN
* 38	340-756D	STATOR ASS'Y 120V	1	INCLUD. 39
* 38	340-614E	STATOR ASS'Y 230V	1	INCLUD. 39
* 38	340-756E	STATOR ASS'Y 220V-230V	1	INCLUD. 39 FOR THA, INA, SIN, CHI, PAN, IND
* 38	340-614F	STATOR ASS'Y 240V	1	INCLUD. 39
* 38	340-756F	STATOR ASS'Y 240V	1	INCLUD. 39 FOR KUW
39	930-703	BRUSH TERMINAL	2	
40	937-631	CORD CLIP	1	
41	984-750	TAPPING SCREW (W/FLANGE) D4 X 16	2	
42	953-174	HEX. HD. TAPPING SCREW D5 X 55	2	
43	307-918	LOCK LEVER	1	
44	600-0VV	BALL BEARING 6000VVCMP2L	1	
45	318-647	RUBBER RING	1	
46	961-729	CUSHION	1	
47	949-794	FLAT HD. SCREW M6 X 20 (10 PCS.)	1	
48	331-706	WASHER	1	
49	949-454	SPRING WASHER M5 (10 PCS.)	1	
50	949-237	MACHINE SCREW M5 X 12 (10 PCS.)	1	
* 51	331-269	INTERNAL WIRE	1	EXCEPT FOR VEN, PAN, CHI, THA, INA, SIN, KUW, MEX, IND
52	331-259	SWITCH	1	
53	331-261	HANDLE COVER	1	
54	307-898	WING BOLT M6 X 18	1	
55	941-056	SPRING	1	
* 56	307-937	WING BOLT (A)	1	
* 56	308-364	WING BOLT (A) M6 X 15	1	FOR VEN, THA, INA, SIN, KUW, CHI, PAN, MEX, IND
57	948-167	SUPER LOCK WASHER M6	1	
58	949-750	ROLL PIN D6 X 50 (10 PCS.)	1	
* 59	930-039	NOISE SUPPRESSOR	1	FOR GBR, SAF, EUROPE, AUT, FIN, NOR, SWE, DEN, SUI, NZL, AUS
* 60	959-141	CONNECTOR 50092 (10 PCS.)	2	FOR NOISE SUPPRESSOR
* 61	308-109	SLOTTED HD. SET SCREW (SEAL LOCK) M6 X 8	1	EXCEPT FOR VEN, THA, INA, SIN, KUW, CHI, PAN, MEX, IND
62	322-260	SEAL LOCK SCREW (W/SP. WASHERS) M6 X 14	1	
63	323-923	LEVER (A)	1	
64	949-566	LOCK NUT M5 (10 PCS.)	1	
65	328-048	LOCK NUT	1	
66	331-708	PLATE	1	
67	329-933	WASHER (C)	1	
* 68	331-262	BASE	1	INCLUD. 54-57, 61
* 68	331-263	BASE	1	INCLUD. 54-57 FOR VEN, THA, INA, SIN, KUW, CHI, PAN, MEX, IND

